

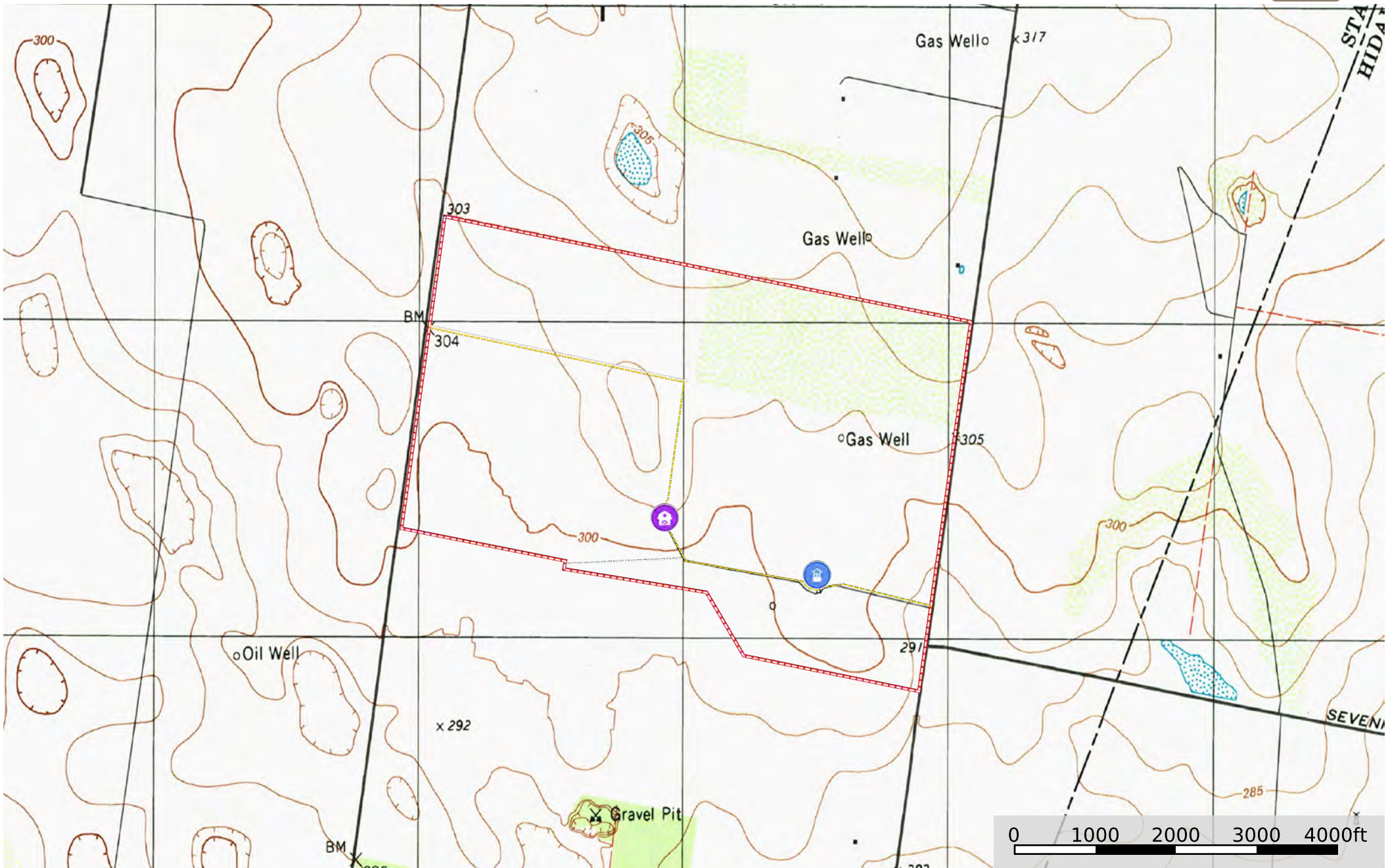


Estrella Ranch

Starr County, Texas, 535 AC +/-



Boundary



- Barn
- Well
- Fence
- Road / Trail
- Boundary
- Voltage Unavailable
- Voltage 0 - 99 KV
- Voltage 100 - 161 KV
- Voltage 220 - 287 KV
- Voltage 345 KV
- Voltage 500 KV
- Voltage 735 KV+



Boundary

|  Boundary 535.59 ac

SOIL CODE	SOIL DESCRIPTION	ACRES	%	CPI	NCCPI	CAP
Mc	McAllen fine sandy loam	535.59	100	0	28	3c
TOTALS		535.59(*)	100%	-	28.0	3

(*) Total acres may differ in the second decimal compared to the sum of each acreage soil. This is due to a round error because we only show the acres of each soil with two decimal.

