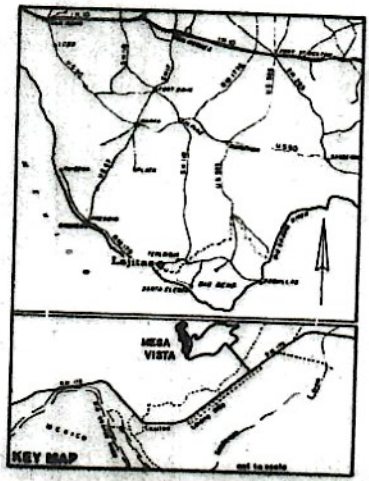
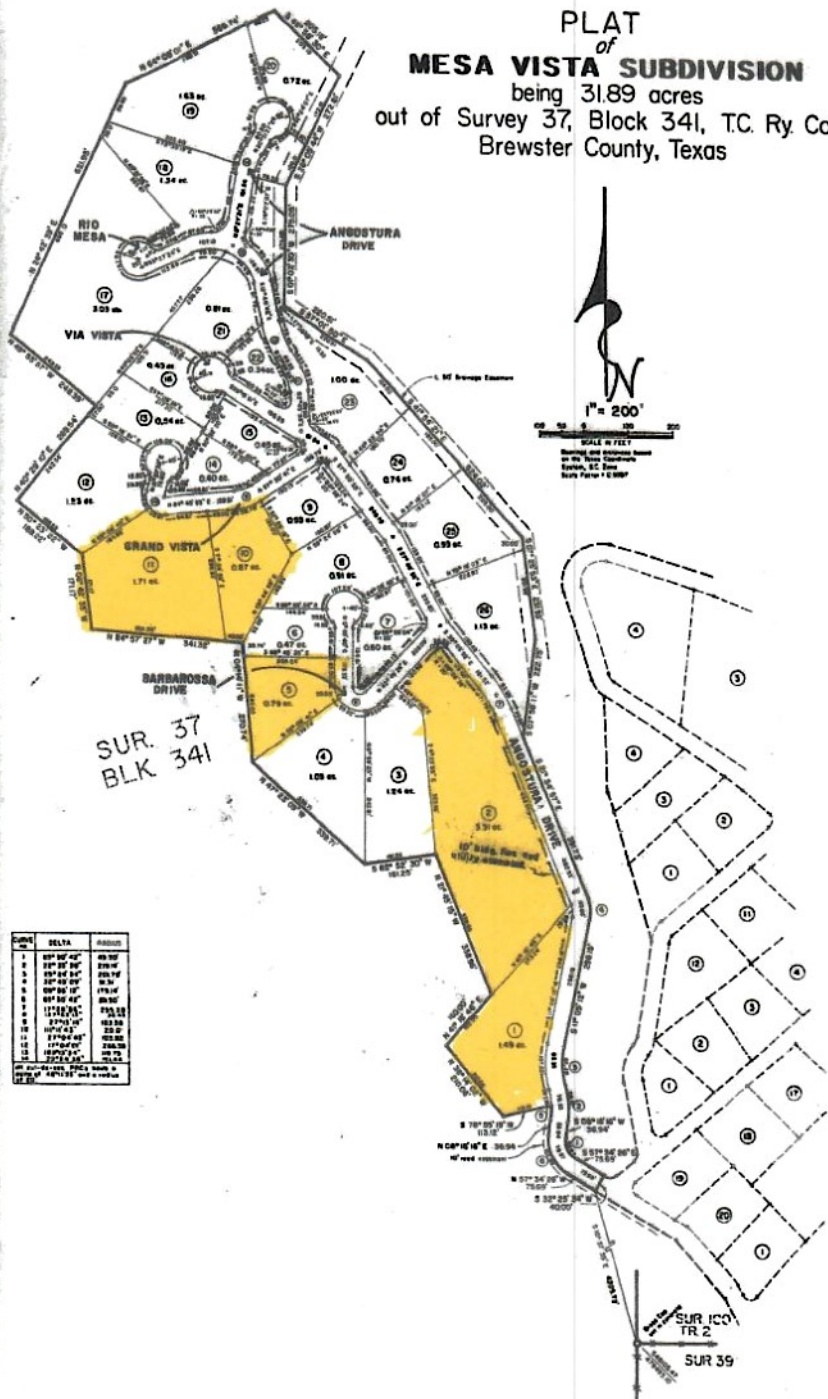


PLAT  
of  
**MESA VISTA SUBDIVISION**  
being 31.89 acres  
out of Survey 37, Block 341, T.C. Ry. Co.  
Brewster County, Texas



*h*

**Mesa Vista  
September 21, 2022  
Block 1**

<b>CAD ID</b>	<b>Lot</b>	<b>Acreage</b>	<b>\$ Price</b>
27901	3	1.24	55,000
27902	4	1.09	50,000
27904	6	.47	25,000
27905	7	.60	35,000
27906	8	.91	45,000
27907	9	.55	35,000
27910	12	1.23	55,000
27911	13	.54	35,000
27912	14	.40	25,000
27913	15	.45	25,000
27914	16	.45	25,000
27915	17	3.03	150,000
27916	18	1.34	60,000
27917	19	1.63	75,000
27918	20	.72	40,000

Mesa Vista-September 21, 2022-Block 1 Continued:

<b>27919</b>	<b>21</b>	<b>.81</b>	<b>45,000</b>
<b>27920</b>	<b>22</b>	<b>.34</b>	<b>30,000</b>
<b>27921</b>	<b>23</b>	<b>1.00</b>	<b>50,000</b>
<b>27922</b>	<b>24</b>	<b>.74</b>	<b>45,000</b>
<b>27923</b>	<b>25</b>	<b>.95</b>	<b>45,000</b>
<b>27924</b>	<b>26</b>	<b>1.13</b>	<b>55,000</b>