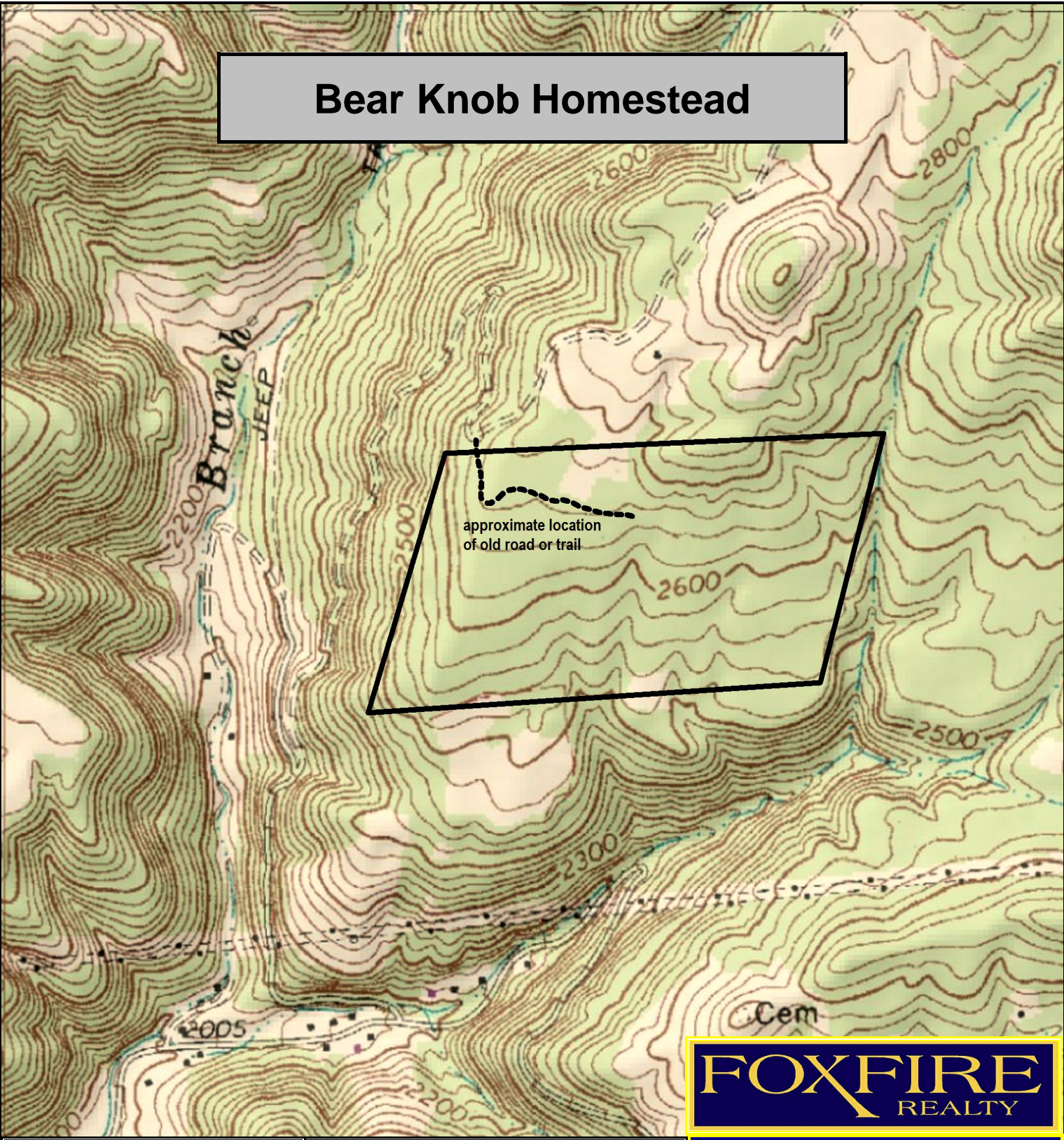


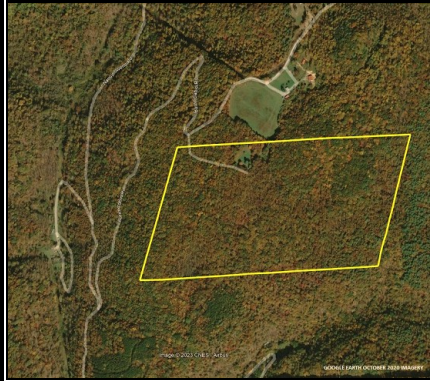
Bear Knob Homestead



FOX FIRE
REALTY

Bear Knob Homestead, Mercer County, WV
TOPOGRAPHIC MAP
Elevation Range: 2530' - 2740' +/-
Google Coordinates: LAT 37.367469 (N), LON -80.946368 (W)
This map is for general location purposes only. Consult a licensed land surveyor for actual boundary location and acreage.

RICHARD GRIST, Broker - Auctioneer - Forester
304.645.7674 Richard@Foxfirenation.com
WWW.FOXFIRENATION.COM



FOR TOPO MAP SCALE 1:9600 1 INCH = 800 FT.

