

NEW CONSTRUCTION HOME

133 STEELE ROAD | STARKVILLE, MS

\$419,000



SMALLTOWN

**HUNTING PROPERTIES
& REAL ESTATESM**

OFFICE (662) 338-2027

133 STEELE ROAD

PROPERTY PROFILE

LOCATION:

- 133 Steele Road
Starkville, MS 39759
- Oktibbeha County
- 5± Miles NE of Starkville
- 9± Miles SW of West Point
- Convenient to Mississippi
State University

COORDINATES:

- 33.50759, -88.75040

PROPERTY USE:

- Residential

PROPERTY INFORMATION:

- New Construction Home
- 3 Bedrooms, 2 Baths
- 2-Car Garage
- Fiber Internet
- Vaulted Ceiling in Living Room
- Tile Bathrooms
- Granite Countertops
- Architectural Shingles

TAX INFORMATION:

- TBD



VIRTUAL TOUR



SMALLTOWN
HUNTING PROPERTIES
& REAL ESTATESM

MICHAEL COOPER

MANAGING BROKER

C: 662-285-8686

O: 662-338-2027

mcooper@smalltownproperties.com

501 Hwy 12 W Ste. 150B - Starkville, MS 39759

smalltownproperties.com

Information is believed to be accurate but not guaranteed.

WELCOME TO 133 STEELE ROAD

IF YOU ARE IN THE MARKET FOR A NEW HOME, THIS IS YOUR OPPORTUNITY! Take advantage of this new construction three bedroom, two bath brick home in Steele Plantation in Oktibbeha County, MS. You will find a vaulted ceiling in the living room which opens to the kitchen. The primary bedroom offers a walk-in closet, double vanity and custom tile in the bathroom. Additional features include crown molding and granite countertops throughout, tile backsplash in the kitchen, a two-car garage, architectural shingles and fiber internet is available. The home is situated just minutes from Mississippi State University.

**Call Michael Cooper today to schedule a showing
and let's make 133 Steele Road your new home address!**



SMALLTOWN
HUNTING PROPERTIES
& REAL ESTATESM

MICHAEL COOPER

MANAGING BROKER

C: 662-285-8686

O: 662-338-2027

mcooper@smalltownproperties.com

501 Hwy 12 W Ste. 150B - Starkville, MS 39759

smalltownproperties.com

Information is believed to be accurate but not guaranteed.



SMALLTOWN

HUNTING PROPERTIES
& REAL ESTATESM

MICHAEL COOPER

MANAGING BROKER

C: 662-285-8686

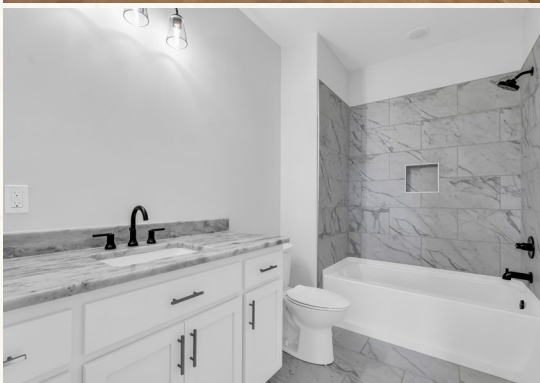
O: 662-338-2027

mcooper@smalltownproperties.com

501 Hwy 12 W Ste. 150B - Starkville, MS 39759

smalltownproperties.com

Information is believed to be accurate but not guaranteed.



SMALLTOWN

HUNTING PROPERTIES
& REAL ESTATESM

MICHAEL COOPER

MANAGING BROKER

C: 662-285-8686

O: 662-338-2027

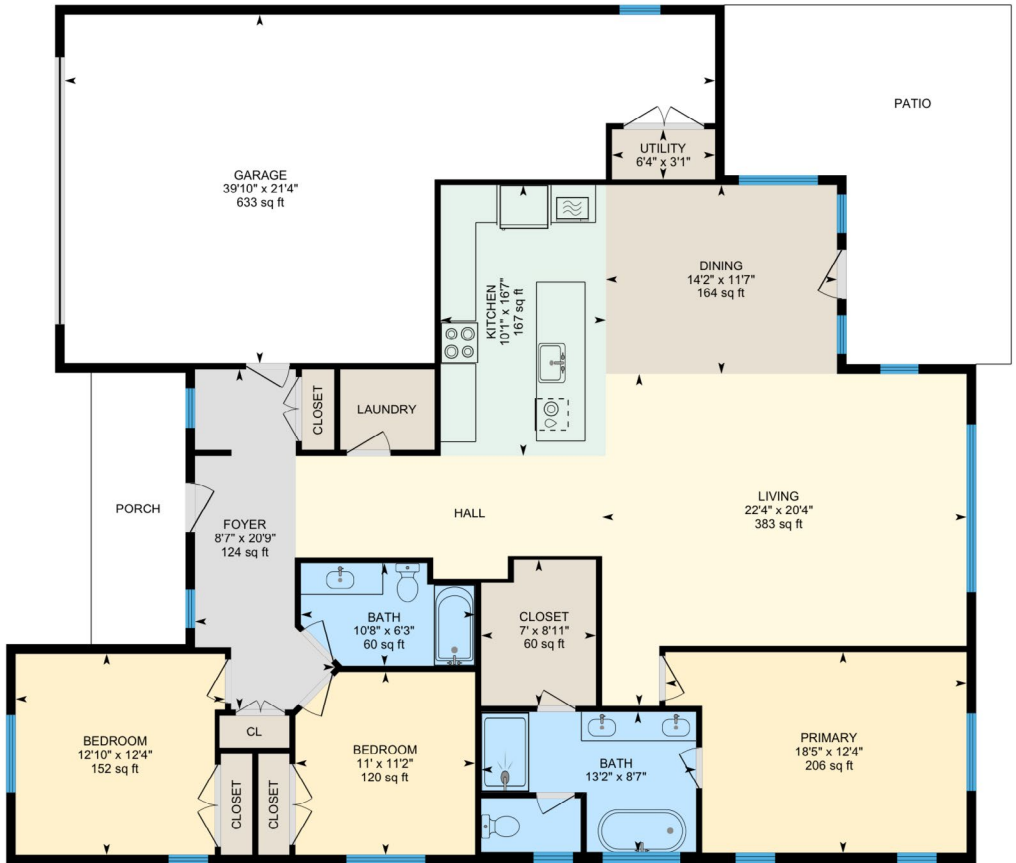
mcooper@smalltownproperties.com

501 Hwy 12 W Ste. 150B - Starkville, MS 39759

smalltownproperties.com

Information is believed to be accurate but not guaranteed.

FLOOR PLAN



SMALLTOWN
HUNTING PROPERTIES
& REAL ESTATESM

MICHAEL COOPER

MANAGING BROKER

C: 662-285-8686

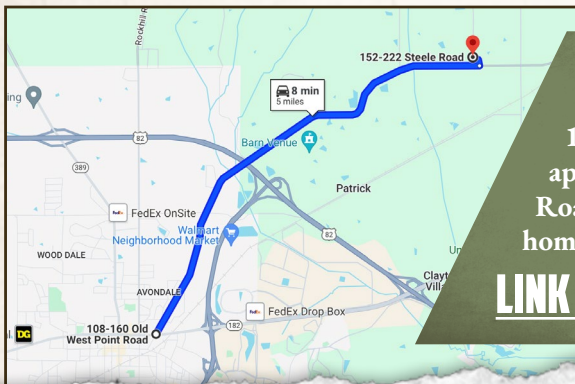
O: 662-338-2027

mcooper@smalltownproperties.com

501 Hwy 12 W Ste. 150B - Starkville, MS 39759

smalltownproperties.com

Information is believed to be accurate but not guaranteed.



Directions From the Intersection of Old West Point Road and Hwy 182 in Starkville: Travel north for approximately 5 miles on Old West Point Road. Turn left onto Steele Road and the home will be the 4th house on the left.

LINK TO GOOGLE MAP DIRECTIONS



SMALLTOWN

HUNTING PROPERTIES
& REAL ESTATESM

MICHAEL COOPER

MANAGING BROKER

C: 662-285-8686

O: 662-338-2027

mcooper@smalltownproperties.com

501 Hwy 12 W Ste. 150B - Starkville, MS 39759

smalltownproperties.com

Information is believed to be accurate but not guaranteed.