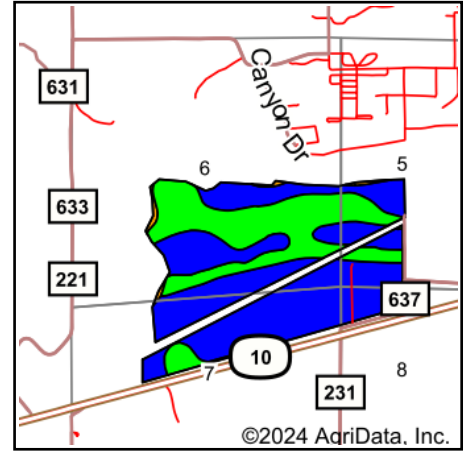
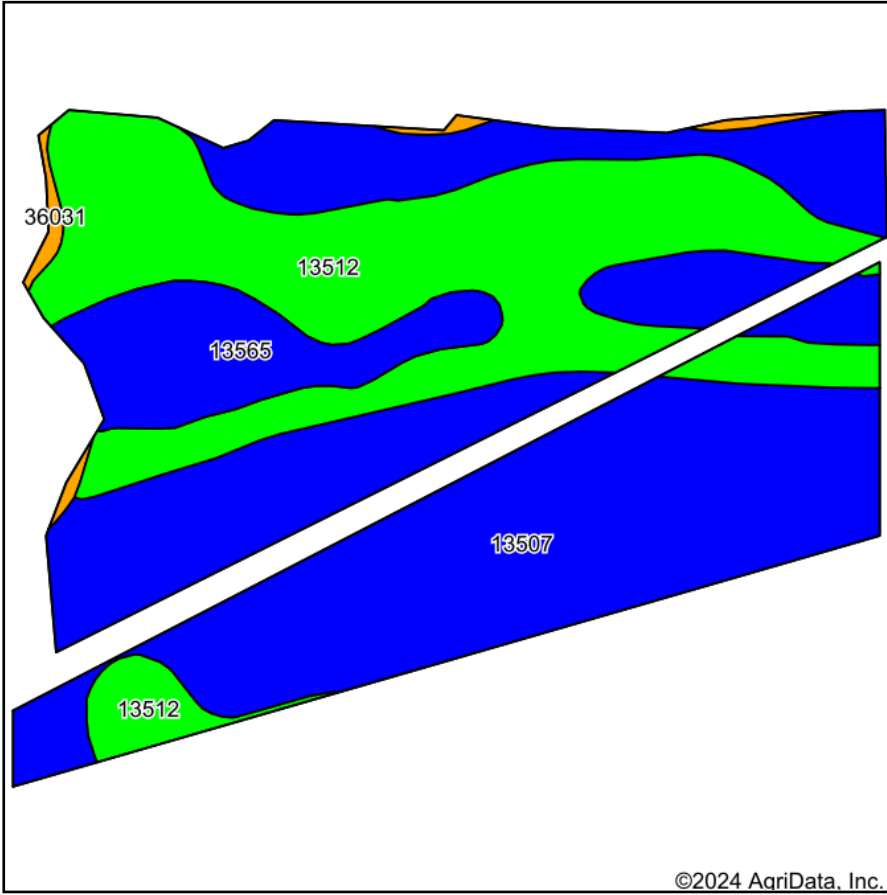


# Soils Map



State: **Missouri**  
 County: **Carroll**  
 Location: **6-52N-23W**  
 Township: **Wakenda**  
 Acres: **367.71**  
 Date: **12/8/2024**



Soils data provided by USDA and NRCS.

Area Symbol: MO033, Soil Area Version: 27

Code	Soil Description	Acres	Percent of field	Non-Irr Class Legend	Non-Irr Class *c	Alfalfa hay Tons	Caucasian bluestem Tons	Common bermudagrass Tons	Corn	Corn Bu	Grain sorghum Bu	Orchardgrass red clover Tons	Pasture AUM	Soybeans Bu	Ta fes AU
13507	Bremer silty clay loam, 0 to 2 percent slopes, rarely flooded	207.62	56.5%		IIw			8				7			
13512	Cotter silt loam, 0 to 2 percent slopes, rarely flooded	124.50	33.9%		Iw	6	8	7	9	9	5	6	8	4	
13565	Norborne loam, 0 to 2 percent slopes, occasionally flooded	31.74	8.6%		IIw	6	8	8				7			
36031	Nodaway silt loam, 0 to 2 percent slopes, frequently flooded	3.85	1.0%		IIIw			7				8			
<b>Weighted Average</b>						<b>1.67</b>	<b>2.5</b>	<b>3.4</b>	<b>7.7</b>	<b>3</b>	<b>3</b>	<b>1.7</b>	<b>6.7</b>	<b>2.7</b>	<b>1.4</b>

\*n: The aggregation method is "Weighted Average using all components"

\*c: Using Capabilities Class Dominant Condition Aggregation Method

Soils data provided by USDA and NRCS.