



CONTINENTAL PLACER INC.

11 Winners Circle • Albany, New York 12205
(518) 458-9203 *fax* (518) 458-9206
www.continentalplacer.com

November 2019

Continental Placer Inc. (CPI) is assisting MP 7 Holdings, LP in marketing their mining operation in Big Pond, PA. In doing so, we have assembled this brief prospectus to inform interested parties of some of the pertinent facts about the mining operation.

The Big Pond Quarry is permitted by the PADEP for bedrock mining operations; the permit area is 62.9 acres. The bedrock being mined at the Big Pond Quarry is either the Wiscoy Formation or the Towanda Formation; the bedrock geology map shows a “projected contact” between the two Formations right at the quarry location. The Wiscoy Formation is a sedimentary, Devonian aged (deposited 400,000,000 years ago) bedrock unit. It is described as gray to olive gray, inter-bedded sandstone, siltstone, mudstone and shale. The Towanda Formation is also a sedimentary, Devonian aged bedrock unit described as a gray, grayish green, grayish red, inter-bedded, shale and mudstone, and medium to fine grained sandstone.

Location: Off of Cheney Road in Big Pond, Springfield Township of Bradford County (see location map)
Mine Permit Status: Permitted
Permitted Area: 62.9 acres
Permitted Reserve: 12,300,000+/- tons
Equipment: There is no equipment included in this sale

This information does not purport to be all-inclusive or to contain all of the information that a prospective buyer may desire. Certain information and other materials are described in summary form, the summaries do not purport to be complete.

No representation or warranty, expressed or implied, made by MP 7 Holdings or CPI as to the accuracy or completeness of this information or otherwise furnished to a recipient in this marketing effort. MP 7 Holdings and CPI expressly disclaim any and all liability which may be based on such information, errors therein or omissions therefrom. Each recipient of this information should perform its own independent investigation and analysis of MP 7 Holdings. The information herein is not a substitute for the recipient’s independent evaluation and analysis. None of the contents herein should be constituted as legal or investment advice. Recipients should consult their own counsel, accountants and business advisors as to the legal, tax and related matters concerning the potential acquisition of MP 7 Holdings’ assets.

Any and all reasonable offers will be considered. MP 7 Holdings and CPI expressly reserve the right, at their sole discretion, to reject any or all expressions of interest or offers to purchase the Properties and/or terminate discussions with any party at any time with or without notice. MP 7 Holdings shall have no legal commitment or obligation to any purchaser reviewing this information or making an offer to purchase the Properties unless a written agreement for the purchase of the Properties has been fully executed, delivered and approved by MP 7 Holdings. CPI is not authorized to make any representation or agreement on behalf of MP 7 Holdings.

For additional information regarding the proposed purchase of the Properties, please contact Mr. Brent Tardif, Senior Geologist at CPI. Mr. Tardif can be reached at 518-458-9203 ext. 308 or btardif@continentalplacer.com.

SITE LOCATION MAP

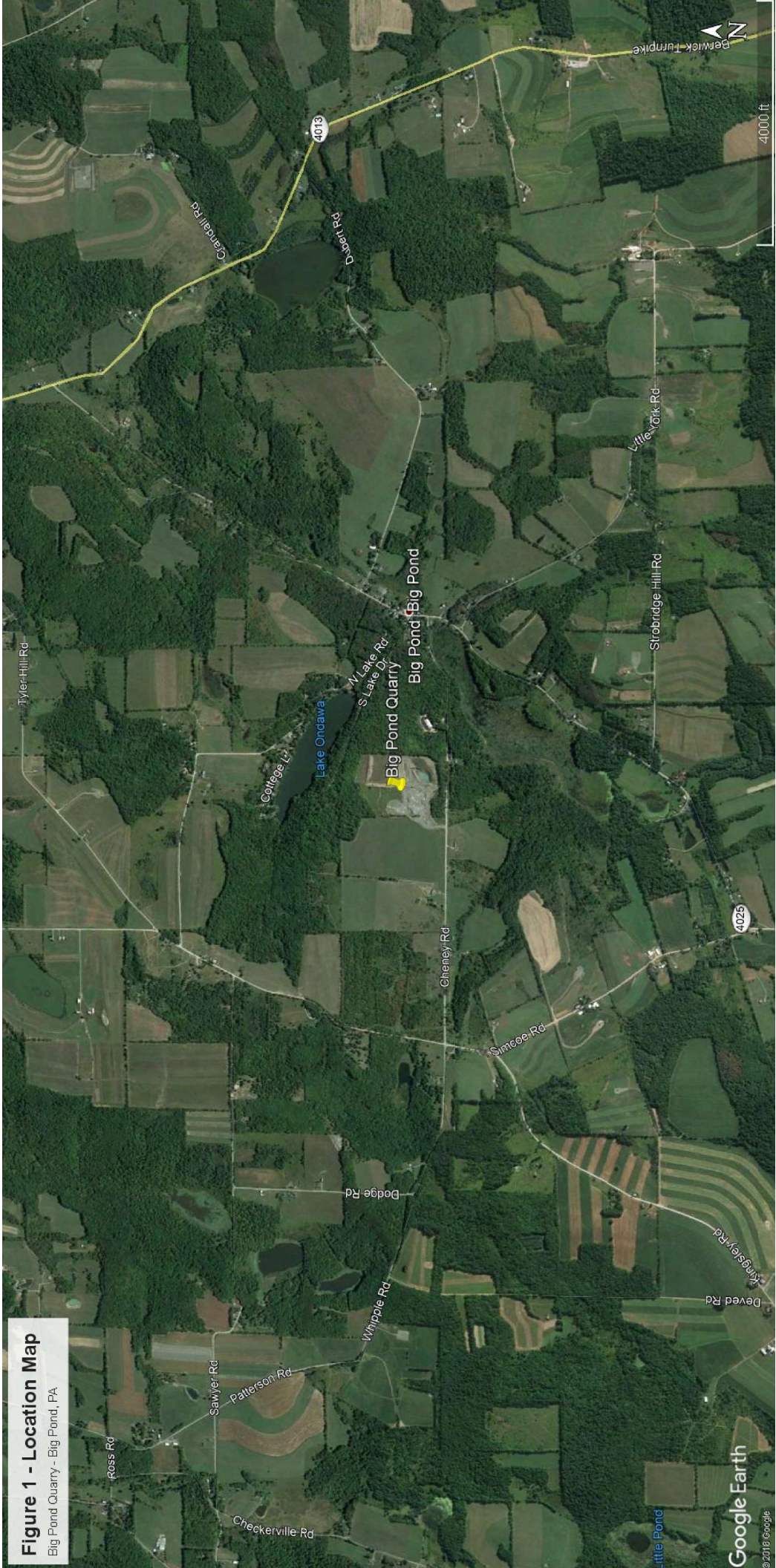


Figure 1 - Location Map
Big Pond Quarry - Big Pond, PA

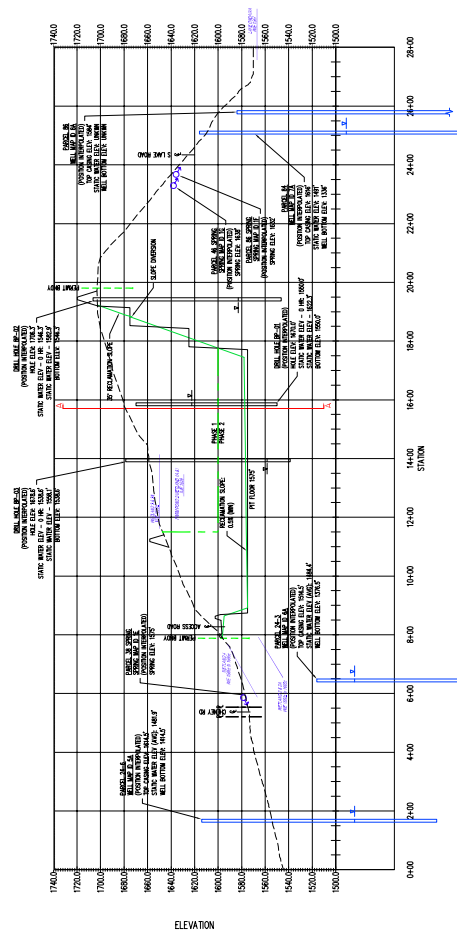
PERMIT MAP AND CROSS SECTIONS



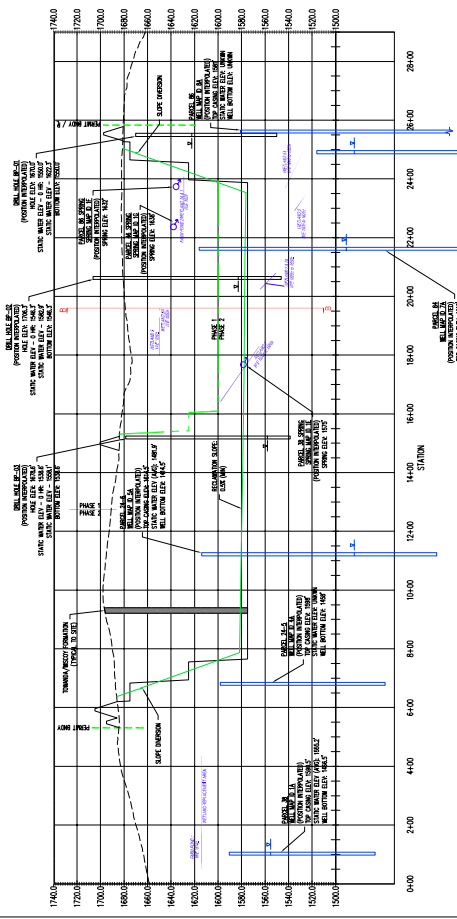
REV.	DATE	BY	COMMENT
1	7/27/10	THS	Expanded support from 16' to 18'
2	7/27/10	THS	Revised all static water elevations
3	7/27/10	THS	Revised all static water elevations

10/14/10
 Rpt and Summary 22.dwg

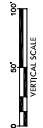
Section B-B



Section A-A



NOTE: CROSS SECTIONS SHOWN FOR INFORMATIONAL PURPOSES ONLY. WITH
 SOME CROSS SECTIONS SHOWN FOR INFORMATIONAL PURPOSES ONLY. WITH
 DETERMINED IN THE FIELD.



CORE LOGS

7.1(B) GEOLOGIC LOG DRILL HOLES/OVERBURDEN ANALYSIS DATA

Hole No. BP -1
 Surface Elevation: 1670.00
 Bottom of Coal Elevations: _____

 Groundwater Elevations ∇ 1622.3 8/26/10
 and Date Measured ▼
▼
 Surveyed by: EADS Group Method: GPS
 Remarks: _____

Operation Name: Big Pond
 Method of Drilling: Air rotary
 Date Drilled: 8/12/10
 Drilled By: Cummings Well Drilling
 Logged By: MJS
 Township: Springfield
 County: Bradford
 Quadrangle: Bently Creek
 Laboratory: ---
 Latitude: 41 52 59.7 Longitude: 76 42 48.8
 Grid Coordinates: _____

Depth	Thick-ness	Scale	Graphic Log	Lithologic Description: rock type, weathering, color, fossils, carbonate minerals concentrations, pyrite, etc.	Water Conditions	Overburden Analysis Logs					
						Munsell Color Code	OBA Sample No.	Log Interval	% Total Sulfur	Fizz Rating	NP
				Brown Clay Shale							
20.0	10										
20.0	20										
25.0	4.0			Brown Gray Silty Shale							
25.0				Brown Gray Clay Shale							
35.0	10.0	30									
37.0	2.0			Brown Gray Silty Shale							
40.0	3.0			Brown Gray Clay Shale							
40.0	40										
43.0	3.0			Gray Clay Shale							
45.0	2.0			Gray Silty Shale							
47.0	2.0			Gray Clay Shale							
47.0				Blue Gray Clay Shale	∇						
	50										
	60										
63.0	16.0										
65.0	2.0			Gray Clay Shale (Powdery)							
67.0	2.0			Gray Brown Sandy Shale							
69.0	2.0			Gray Silty Shale							

7.1(B) GEOLOGIC LOG DRILL HOLES/OVERBURDEN ANALYSIS DATA - CONTINUED

Hole No. BP -1 Operation Name: Big Pond
 Surface Elevation: 1670.00 Township: Springfield
 Date Drilled: 8/12/10 County: Bradford
 Remarks: _____

Depth	Thick-ness	Scale	Graphic Log	Lithologic Description: rock type, weathering, color, fossils, carbonate minerals concentrations, pyrite, etc.	Water Conditions	Overburden Analysis Logs					
						Munsell Color Code	OBA Sample No.	Log Interval	% Total Sulfur	Fizz Rating	NP
75.0	6.0	80		Gray Clay Shale (continued)							
77.0	2.0			Gray Brown Silty Shale							
81.0	4.0			Gray Silty Shale							
83.0	2.0			Dark Gray Silty Shale							
85.0	2.0			Dark Gray Clay Shale (Powdery)							
87.0	2.0			Brown Gray Clay Shale							
				90		Gray Clay Shale					
100.0	5.0					Dark Gray Clay Shale					
105.0	4.0					Brown Gray Clay Shale					
109.0	6.0			110		Dark Gray Clay Shale					
115.0	2.0	Dark Gray Sandy Shale									
117.0	3.0	Dark Gray Clay Shale									
120.0		120									
				130							
						140					

7.1(B) GEOLOGIC LOG DRILL HOLES/OVERBURDEN ANALYSIS DATA

Hole No. BP-2
 Surface Elevation: 1706.30
 Bottom of Coal Elevations: _____

 Groundwater Elevations ▽ 1582.9 8/26/10
 and Date Measured ▼
▼
 Surveyed by: EADS Group Method: GPS
 Remarks: _____

Operation Name: Big Pond
 Method of Drilling: Air rotary
 Date Drilled: 8/12/10
 Drilled By: Cummings Well Drilling
 Logged By: MJS
 Township: Springfield
 County: Bradford
 Quadrangle: Bently Creek
 Laboratory: ---
 Latitude: 41 53 04.3 Longitude: 76 42 55.4
 Grid Coordinates: _____

Depth	Thick-ness	Scale	Graphic Log	Lithologic Description: rock type, weathering, color, fossils, carbonate minerals concentrations, pyrite, etc.	Water Conditions	Overburden Analysis Logs					
						Munsell Color Code	OBA Sample No.	Log Interval	% Total Sulfur	Fizz Rating	NP
5.0	5.0			Brown Gray Clay Shale							
10.0	5.0			Gray Silty Shale							
22.0	12.0	10		Dark Gray Clay Shale							
28.0	6.0			Gray Clay Shale							
40.0	12.0	30		Light Gray Clay Shale							
42.0	2.0			Gray Silty Shale							
46.0	4.0			Dark Gray Silty Shale							
50.0	4.0			Blue Gray Clay Shale							
52.0	2.0	50		Brown Gray Clay Shale							
58.0	6.0			Blue Gray Clay Shale							
64.0	6.0	60		Brown Gray Clay/Silty Shale							
				Blue Gray Clay Shale							

7.1(B) GEOLOGIC LOG DRILL HOLES/OVERBURDEN ANALYSIS DATA - CONTINUED

Hole No. BP-2 Operation Name: Big Pond
 Surface Elevation: 1706.30 Township: Springfield
 Date Drilled: 8/12/10 County: Bradford
 Remarks: _____

Depth	Thick-ness	Scale	Graphic Log	Lithologic Description: rock type, weathering, color, fossils, carbonate minerals concentrations, pyrite, etc.	Water Conditions	Overburden Analysis Logs					
						Munsell Color Code	OBA Sample No.	Log Interval	% Total Sulfur	Fizz Rating	NP
80.0	16.0			Blue Gray Clay Shale (<i>continued</i>)							
82.0	2.0	80		Blue Gray Silty Shale							
84.0	2.0			Gray Clay Shale							
				Gray Silty Shale							
92.0	8.0	90		Gray Clay Shale							
108.0	16.0	100		Gray Silty Shale							
112.0	4.0	110		Gray Clay Shale							
116.0	4.0			Gray Silty Shale							
126.0	10.0	120		Dark Gray Silty Shale							
132.0	6.0	130		Dark Gray Clay Shale							
138.0	6.0			Gray Brown Clay Shale							
140.0	2.0	140		Gray Silty Shale							
146.0	6.0			Blue Gray Silty Shale							
150.0	4.0			Blue Gray Silty Shale							

7.1(B) GEOLOGIC LOG DRILL HOLES/OVERBURDEN ANALYSIS DATA - CONTINUED

Hole No. BP-2 Operation Name: Big Pond
 Surface Elevation: 1706.30 Township: Springfield
 Date Drilled: 8/12/10 County: Bradford
 Remarks: _____

Depth	Thick-ness	Scale	Graphic Log	Lithologic Description: rock type, weathering, color, fossils, carbonate minerals concentrations, pyrite, etc.	Water Conditions	Overburden Analysis Logs					
						Munsell Color Code	OBA Sample No.	Log Interval	% Total Sulfur	Fizz Rating	NP
154.0	4.0			Blue Gray Clay Shale							
156.0	2.0			Dark Gray Silty Shale							
160.0	4.0			Borwn Gray Silty Shale							
		160									
		170									
		180									
		190									
		200									
		210									
		220									

7.1(B) GEOLOGIC LOG DRILL HOLES/OVERBURDEN ANALYSIS DATA

Hole No. BP-3
 Surface Elevation: 1678.60
 Bottom of Coal Elevations: _____

 Groundwater Elevations ▽ 1558.1 8/26/10
 and Date Measured ▼
▼
 Surveyed by: EADS Group Method: GPS
 Remarks: _____

Operation Name: Big Pond
 Method of Drilling: Air rotary
 Date Drilled: 8/13/10
 Drilled By: Cummings Well Drilling
 Logged By: MJS
 Township: Springfield
 County: Bradford
 Quadrangle: Bently Creek
 Laboratory: ---
 Latitude: 41 52 59.9 Longitude: 76 43 02.4
 Grid Coordinates: _____

Depth	Thick-ness	Scale	Graphic Log	Lithologic Description: rock type, weathering, color, fossils, carbonate minerals concentrations, pyrite, etc.	Water Conditions	Overburden Analysis Logs					
						Munsell Color Code	OBA Sample No.	Log Interval	% Total Sulfur	Fizz Rating	NP
				Riddish Brown Silty Shale							
40.0	4.0			Brown Clay Shale							
44.0				Gray Clay Shale							
55.0	2.0			Brown Gray Clay Shale							
57.0	3.0			Brown Silty Shale							
60.0	3.0			Gray Clay Shale							
63.0				Blue Gray Clay Shale							
	12.0										

7.1(B) GEOLOGIC LOG DRILL HOLES/OVERBURDEN ANALYSIS DATA - CONTINUED

Hole No. BP-3 Operation Name: Big Pond
 Surface Elevation: 1678.60 Township: Springfield
 Date Drilled: 8/13/10 County: Bradford
 Remarks: _____

Depth	Thick-ness	Scale	Graphic Log	Lithologic Description: rock type, weathering, color, fossils, carbonate minerals concentrations, pyrite, etc.	Water Conditions	Overburden Analysis Logs					
						Munsell Color Code	OBA Sample No.	Log Interval	% Total Sulfur	Fizz Rating	NP
75.0				Blue Gray Clay Shale (<i>continued</i>)							
	5.0			Gray Clay Shale							
80.0		80		Gray Silty Shale							
81.0	1.0			Blue Gray Clay Shale							
83.0	2.0			Dark Gray Clay Shale							
		90		Gray Silty Shale							
	17.0			Gray Silty Shale							
100.0		100		Gray Silty Shale							
	11.0			Gray Silty Shale							
111.0		110		Gray Clay Shale							
	4.0			Gray Clay Shale							
115.0				Gray Sandy Shale							
	3.0			Gray Sandy Shale							
118.0				Gray Silty Shale							
120.0	2.0			Dark Gray Silty Shale							
121.0	1.0	120		Dark Gray Clay Shale							
		120		Dark Gray Clay Shale							
	12.0			Dark Gray Silty Shale							
		130		Dark Gray Silty Shale							
133.0				Dark Gray Sandy Shale							
135.0	2.0			Brownish Gray Clay Shale							
	5.0			Brownish Gray Clay Shale							
140.0		140		Brownish Gray Clay Shale							

PA DEP PERMIT - LINK TO EFACTS

https://www.ahs.dep.pa.gov/eFACTSWeb/searchResults_singleSite.aspx?SiteID=735545

eFACTS on the Web
DEP Information
About DEP
DEP Home
Search eFACTS
Authorization Search
Client Search
Facility Search
Inspection Search
Mammography Search
Name Search
Pollution Prevention
Sites by County/Municipality
Site Search
Other Sites
eMapPA
eNotice
EPA ECHO
EPA Envirofacts
Permits, Licensing, and Certification
The PA Code

Site Details

[Moshannon District Mining Office](#)

[Site Search](#)

[Sites by County/Muni Search](#)

Site ID:	735545
Site Name:	BIG POND QUARRY
Address:	
Status:	Active

Clients (1)

Client List
INSINGER EXCAV INC (242140)

Programs (2)

DEP Programs
Air Quality
Mining

PA Municipalities (1)

Municipalities/Counties
Springfield Twp, Bradford County

Site Permits (2)

Authorization Id	Authorization Type	Date Received	Status/Date
940569	AQ General Permit	08/24/2012	Issued 09/18/2012
940566	AQ General Permit	08/24/2012	Issued 09/18/2012

Facility Permits (7)

Authorization Id	Authorization Type	Date Received	Status/Date
939096	NPDES Industrial Mineral Mine	10/26/2010	Issued 08/06/2012
1008994	Large Surface Mining Permit	12/20/2013	Denied 05/06/2014
854259	Large Surface Mining Permit	10/26/2010	Issued 08/06/2012
1199591	AQ GP 9 - Diesel or No.2 Fuel-Fired IC Engines	09/18/2017	Issued 10/05/2017
1029034	Large Surface Mining Permit	06/04/2014	Denied 01/26/2015
1199589	AQ GP 3 - Portable Nonmetallic Mineral Processing Plants	09/18/2017	Issued 10/05/2017
1175837	NPDES Industrial Mineral Mine	03/28/2017	Issued 10/12/2017

Site-Level and Primary Facility-Level Inspections (47)

Inspection ID	Inspection Date	Inspection Type	Inspection Results
2935496	09/19/2019	Full Compliance Evaluation	No Violations Noted
2891044	06/06/2019	Explosives	No Violations Noted
2882466	05/15/2019	Explosives	No Violations Noted
2836832	02/06/2019	Explosives	No Violations Noted
2775575	09/11/2018	Routine/Complete Inspection	No Violations Noted
2769028	08/27/2018	Explosives	No Violations Noted
2759731	08/01/2018	Full Compliance Evaluation	No Violations Noted
2752897	07/10/2018	Explosives	No Violations Noted
2733335	05/23/2018	Routine/Partial Inspection	No Violations Noted
2729552	05/09/2018	Explosives	No Violations Noted
2682577	01/08/2018	Routine/Partial Inspection	No Violations Noted
2660488	11/02/2017	Explosives	No Violations Noted
2654734	10/26/2017	Explosives	No Violations Noted
2654233	10/25/2017	Routine/Partial Inspection	No Violations Noted
2648878	10/12/2017	Routine/Partial Inspection	No Violations Noted
2636832	09/13/2017	Explosives	No Violations Noted
2631088	08/29/2017	Full Compliance Evaluation	No Violations Noted
2613259	07/06/2017	Explosives	No Violations Noted
2594139	05/15/2017	Explosives	No Violations Noted
2580266	03/29/2017	Routine/Complete Inspection	No Violations Noted
2562404	02/15/2017	Explosives	No Violations Noted
2528714	10/13/2016	Explosives	No Violations Noted
2530453	09/19/2016	Routine/Complete Inspection	No Violations Noted
2513736	08/26/2016	Full Compliance Evaluation	No Violations Noted
2497745	06/28/2016	Routine/Complete Inspection	No Violations Noted
2488385	05/26/2016	Explosives	No Violations Noted
2475614	04/14/2016	Explosives	No Violations Noted
2442921	01/20/2016	Routine/Complete Inspection	No Violations Noted
2402573	08/25/2015	Routine/Complete Inspection	No Violations Noted
2374709	05/26/2015	Explosives	No Violations Noted
2376450	05/19/2015	Routine/Complete Inspection	No Violations Noted
2352689	03/16/2015	Explosives	No Violations Noted
2304772	09/17/2014	Full Compliance Evaluation	No Violations Noted
2263926	04/17/2014	Explosives	No Violations Noted

2231382	12/20/2013	Routine/Partial Inspection	In Compliance with Schedule
2222591	11/07/2013	Explosives	In Compliance with Schedule
2218276	10/22/2013	Routine/Complete Inspection	Violation(s) Noted View Details
2212835	10/10/2013	Explosives	Violation(s) Noted View Details
2216748	10/10/2013	Explosives	In Compliance with Schedule
2195970	08/14/2013	Full Compliance Evaluation	No Violations Noted
2179200	06/20/2013	Explosives	Violation(s) Noted View Details
2173551	05/30/2013	Routine/Complete Inspection	Violation(s) Noted View Details
2130043	01/09/2013	Routine/Partial Inspection	No Violations Noted
2110313	10/24/2012	Routine/Complete Inspection	No Violations Noted
2103214	09/27/2012	Routine/Partial Inspection	No Violations Noted
2100451	09/12/2012	Explosives	No Violations Noted
2092758	08/15/2012	Routine/Partial Inspection	No Violations Noted

PHOTOS



Photo 1: Panorama View Looking North at Lower Lift



Photo 2: Upper Lift Looking East Northeast



Photo 3: From Upper Lift Looking Southeast



Photo 4: View of Lower Lift Looking North



Photo 5: Scale House