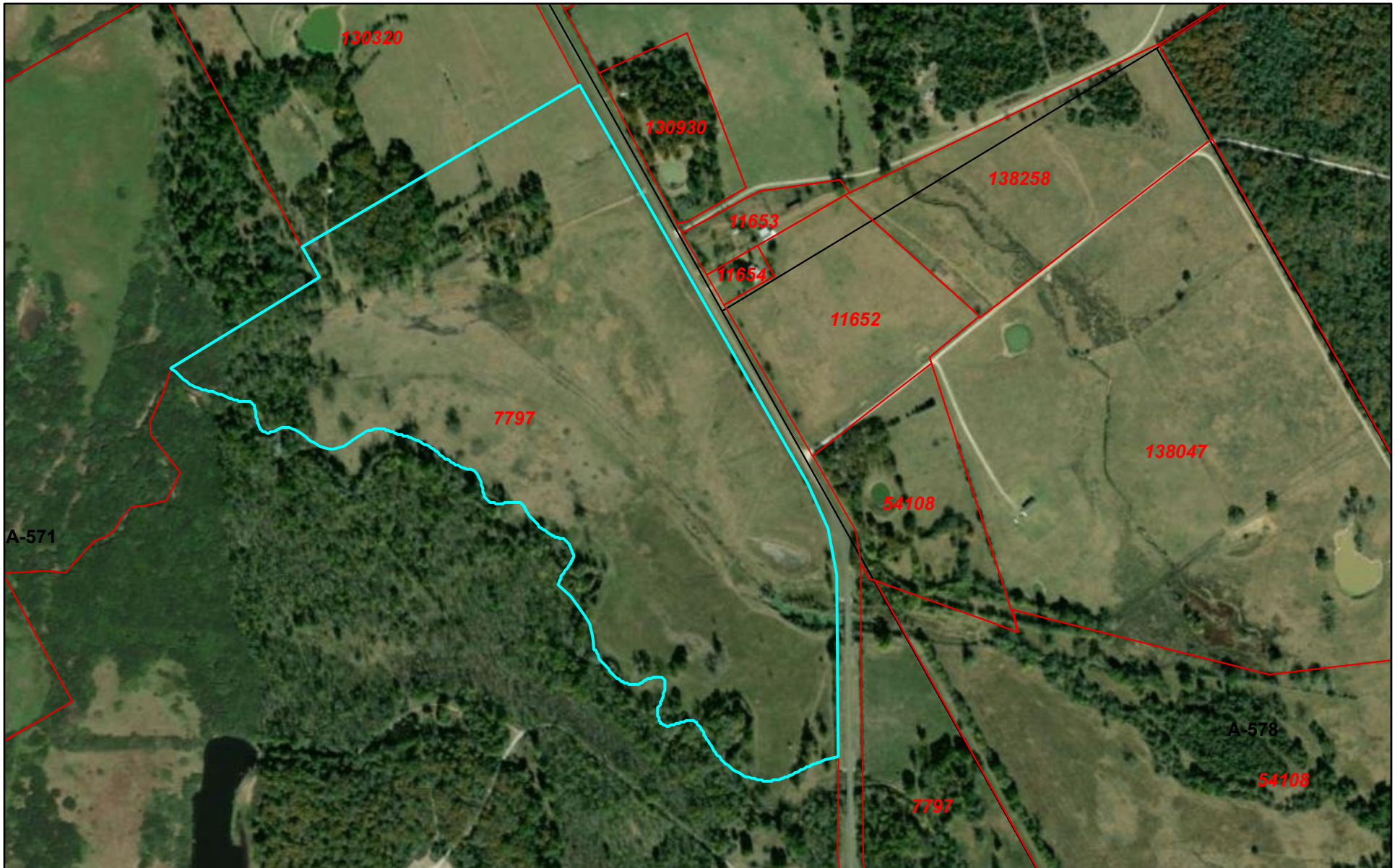
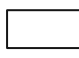


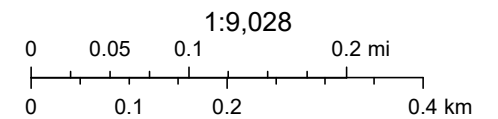
Limestone CAD Web Map



1/7/2025, 9:56:55 AM

 Parcels

 Abstracts



Maxar

Limestone County Appraisal District, BIS Consulting - www.bisconsulting.com

Disclaimer: This product is for informational purposes only and has not been prepared for or be suitable for legal, engineering, or surveying purposes. It does not represent an on-the-ground survey and represents only the approximate relative location of boundaries.