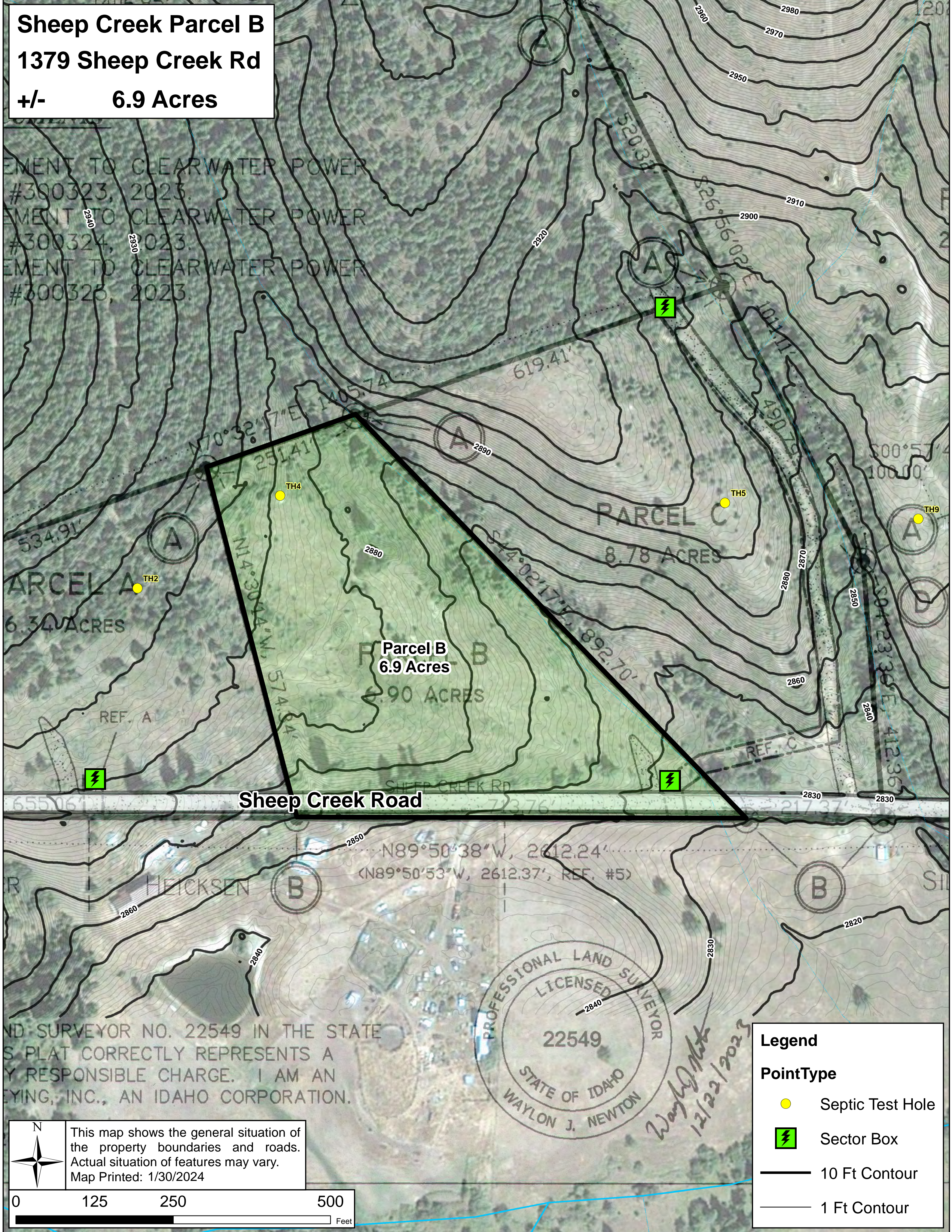


Sheep Creek Parcel B
1379 Sheep Creek Rd
+/- 6.9 Acres

EMENT TO CLEARWATER POWER
 #300323, 2023.
 EMENT TO CLEARWATER POWER
 #300324, 2023.
 EMENT TO CLEARWATER POWER
 #300325, 2023.



ND SURVEYOR NO. 22549 IN THE STATE
 S PLAT CORRECTLY REPRESENTS A
 Y RESPONSIBLE CHARGE. I AM AN
 YING, INC., AN IDAHO CORPORATION.



Legend

PointType

- Septic Test Hole
- ⚡ Sector Box
- 10 Ft Contour
- 1 Ft Contour

This map shows the general situation of the property boundaries and roads. Actual situation of features may vary.
 Map Printed: 1/30/2024

