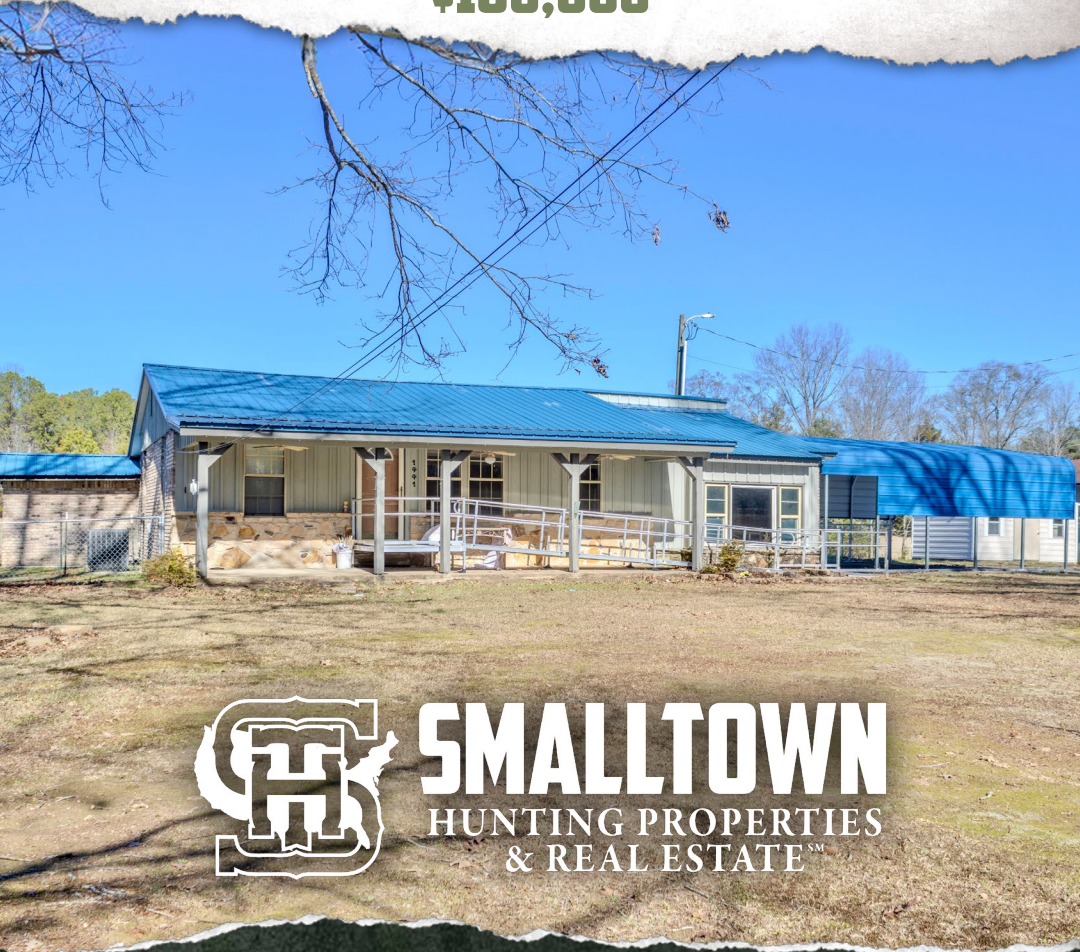


**1441 GOLDING ROAD**  
**A HOME ON 2± ACRES**  
**COLUMBUS | LOWNDES COUNTY, MS**  
**\$180,000**



**SMALLTOWN**  
HUNTING PROPERTIES  
& REAL ESTATE<sup>SM</sup>

OFFICE (662) 338-2027 | [WWW.SMALLTOWNPROPERTIES.COM](http://WWW.SMALLTOWNPROPERTIES.COM)

# 1441 GOLDING ROAD

## PROPERTY PROFILE

### LOCATION:

- 1441 Golding Road  
Columbus, MS 39702
- Lowndes County
- 3.2± Miles to New Hope
- 4.2± Miles to Lake Lowndes  
State Park

### COORDINATES:

- 33.4187, -88.3109

### PROPERTY USE:

- Residential
- Investment

### PROPERTY INFORMATION:

- 2± Acres
- 1,751± SqFt Home
- 3 Bedrooms/2 Bathrooms
- New Hope School District
- Quiet Paved County Road
- Multiple Out Buildings
- Gated/Fenced
- Covered Parking

### TAX INFORMATION:

- Parcel id 76W00-00-09300



**SMALLTOWN**  
HUNTING PROPERTIES  
& REAL ESTATE<sup>SM</sup>

**JACOB HANSON**

LAND SPECIALIST

C: 662-386-3814

O: 662-338-2027

[jacob@smalltownproperties.com](mailto:jacob@smalltownproperties.com)

501 Hwy 12 W, Ste 150B - Starkville, MS 39759

[smalltownproperties.com](http://smalltownproperties.com)

Information is believed to be accurate but not guaranteed.

# WELCOME TO 1441 GOLDING ROAD

WELCOME HOME TO 1441 GOLDING ROAD IN LOWNDES COUNTY, MISSISSIPPI. Nestled on a serene county-paved road, behind a secure fence and gate, this 2± acre property offers the ultimate blend of comfort and privacy. The focal point is a 1,751± square foot home featuring three bedrooms, two baths, a sizeable living area, and a kitchen with stainless appliances. Enjoy the covered parking area, ideal for vehicles or an RV. Outside, you will find a well-equipped shop perfect for projects and storage and a delightful she-shed providing a cozy retreat or creative space. The yard offers ample space for gardening, pets, and other outdoor activities. The property is located in the sought-after New Hope School District and is less than five miles from the Lake Lowndes State Park.

Call **Jacob Hanson** today to explore the opportunity of owning a property that promises tranquility and convenience in one of the most desirable areas. Schedule your visit today and make **1441 Golding Road** your new address!



**SMALLTOWN**  
HUNTING PROPERTIES  
& REAL ESTATE<sup>SM</sup>

**JACOB HANSON**

LAND SPECIALIST

C: 662-386-3814

O: 662-338-2027

[jacob@smalltownproperties.com](mailto:jacob@smalltownproperties.com)

501 Hwy 12 W, Ste 150B - Starkville, MS 39759

[smalltownproperties.com](http://smalltownproperties.com)

Information is believed to be accurate but not guaranteed.

1441 GOLDING ROAD

COLUMBUS

LOWNDES COUNTY, MISSISSIPPI



# SMALLTOWN

HUNTING PROPERTIES  
& REAL ESTATE<sup>SM</sup>

**JACOB HANSON**

LAND SPECIALIST

C: 662-386-3814

O: 662-338-2027

[jacob@smalltownproperties.com](mailto:jacob@smalltownproperties.com)

501 Hwy 12 W, Ste 150B - Starkville, MS 39759

[smalltownproperties.com](http://smalltownproperties.com)

Information is believed to be accurate but not guaranteed.



# SMALLTOWN

HUNTING PROPERTIES  
& REAL ESTATE<sup>SM</sup>

**JACOB HANSON**

LAND SPECIALIST

C: 662-386-3814

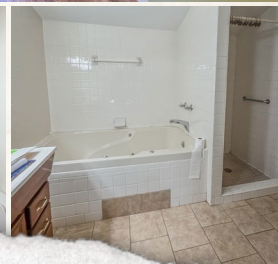
O: 662-338-2027

[jacob@smalltownproperties.com](mailto:jacob@smalltownproperties.com)

501 Hwy 12 W, Ste 150B - Starkville, MS 39759

[smalltownproperties.com](http://smalltownproperties.com)

Information is believed to be accurate but not guaranteed.



# SMALLTOWN

HUNTING PROPERTIES  
& REAL ESTATE<sup>SM</sup>

**JACOB HANSON**

LAND SPECIALIST

C: 662-386-3814

O: 662-338-2027

[jacob@smalltownproperties.com](mailto:jacob@smalltownproperties.com)

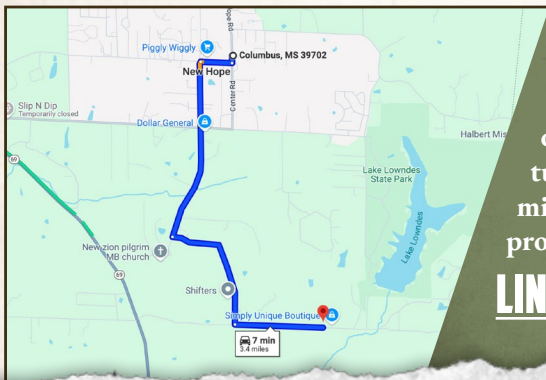
501 Hwy 12 W, Ste 150B - Starkville, MS 39759

[smalltownproperties.com](http://smalltownproperties.com)

Information is believed to be accurate but not guaranteed.



land **id.** LINK



Directions from Columbus, MS:  
Turn left on Center Road and travel 0.4 miles. Turn right on Lake Lowndes Road and continue 0.2 miles. Turn left on New Hope Road and in 0.9 miles turn left on Richardson Road. Proceed 1 mile and turn left on Golding Road. The property will be on the left.

[LINK TO GOOGLE MAP DIRECTIONS](#)



**SMALLTOWN**  
HUNTING PROPERTIES  
& REAL ESTATE<sup>SM</sup>

**JACOB HANSON**

LAND SPECIALIST

C: 662-386-3814

O: 662-338-2027

[jacob@smalltownproperties.com](mailto:jacob@smalltownproperties.com)

501 Hwy 12 W, Ste 150B - Starkville, MS 39759

[smalltownproperties.com](http://smalltownproperties.com)

Information is believed to be accurate but not guaranteed.