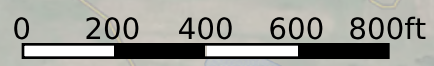
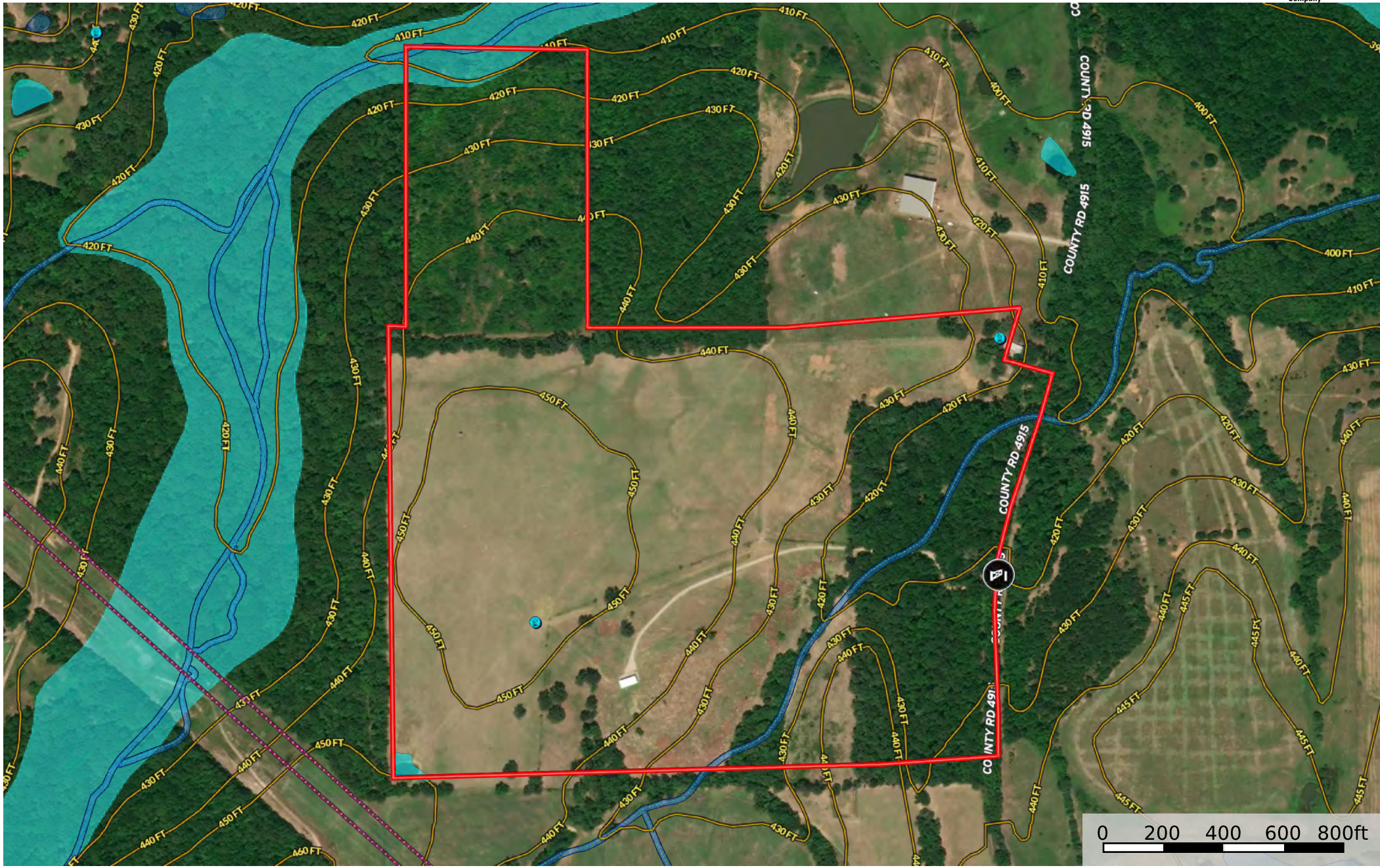


Land for Sale Ben Wheeler TX 83.241 acres

Van Zandt County, Texas, 83.241 AC +/-



Gate	Boundary	100 Year Floodplain	500 Year Floodplain	Floodway	Special	Unmapped/ Not Included	Wetlands	Riparian	Water Wells	Voltage Unavailable	Voltage 0 - 99 KV	Voltage 100 - 161 KV	Voltage 220 - 287 KV
Voltage 345 KV	Voltage 500 KV	Voltage 735 KV+	Crude Oil	Natural Gas	Other	Stream, Intermittent	River/Creek	Water Body					