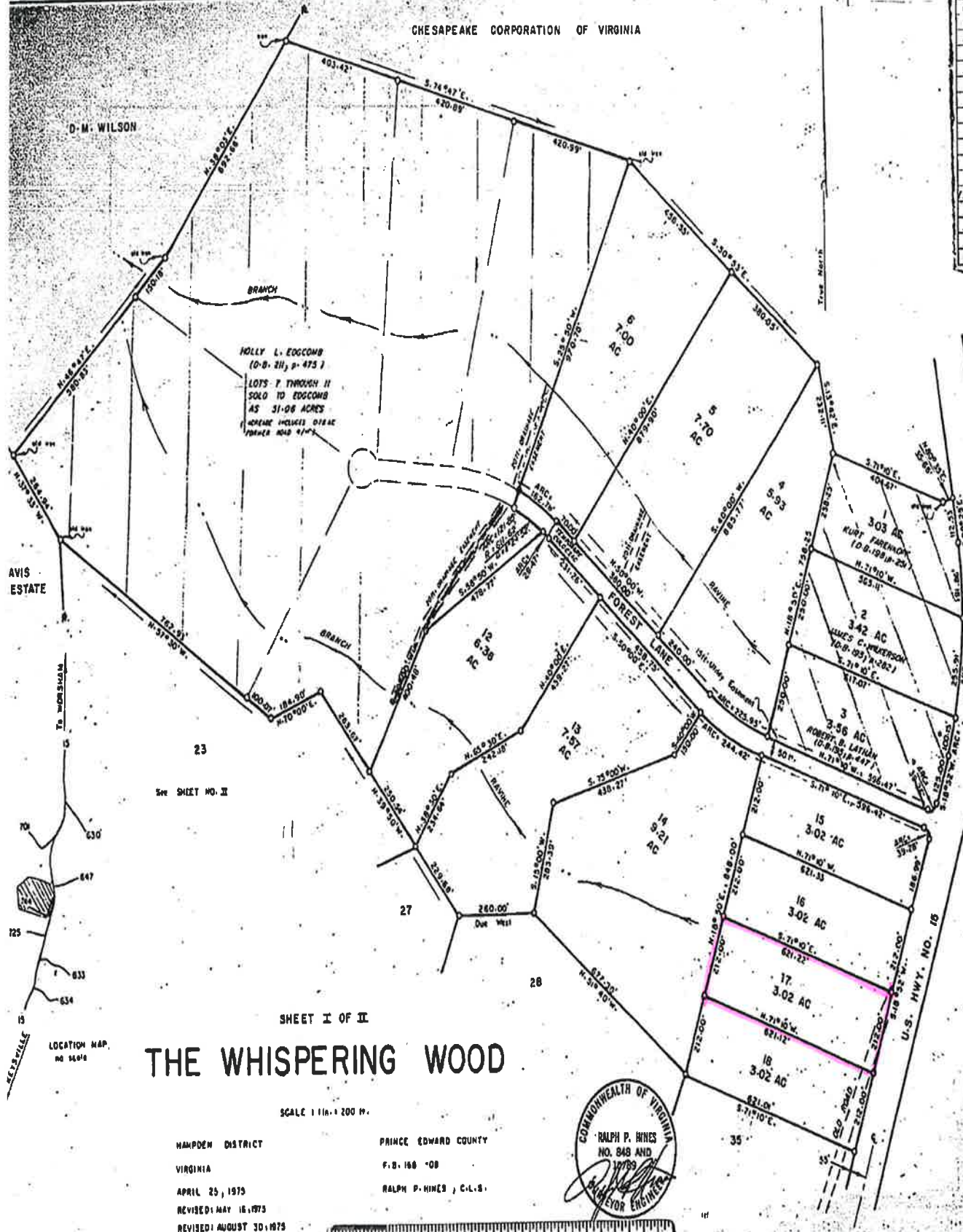


131

CHESAPEAKE CORPORATION OF VIRGINIA

CURVE DATA			
NO.	DELTA	RADIUS	ARC
1	09°34'02"	110.34'	191.06'
2	13°12'20"	110.34'	235.91'
3	03°10'04"	110.34'	100.15'
3	89°58'18"	25.00'	38.26'
4	21°10'00"	611.62'	225.05'
6	14°05'48"	661.62'	162.78'
11	11°24'52"	611.62'	121.05'
12	02°40'00"	611.62'	28.47'
16	21°10'00"	661.62'	244.42'
18	90°01'44"	25.00'	38.26'
18	33°20'00"	611.62'	345.15'



STATE OF VIRGINIA
COUNTY OF PRINCE EDWARD
I, Clerk of the Circuit Court of Prince Edward County, Virginia, do hereby certify that the foregoing Plat was this day presented in said office in the Clerk's Office of the Circuit Court of Prince Edward County, June 1, 1981.

The foregoing Plat was this day presented in said office along with and as a part of Deed from Roselyn C. Hines and Husband,

NOTE: All corners set on all corners which are not shown on this plat are to be set as shown on Sheet II for Negatives.

This subdivision known as THE WHISPERING WOOD is approved by the undersigned as being in accordance with the regulations and may be recorded.

date _____ High
date _____ Healt
date May 28, 1981 _____
date _____
date _____

