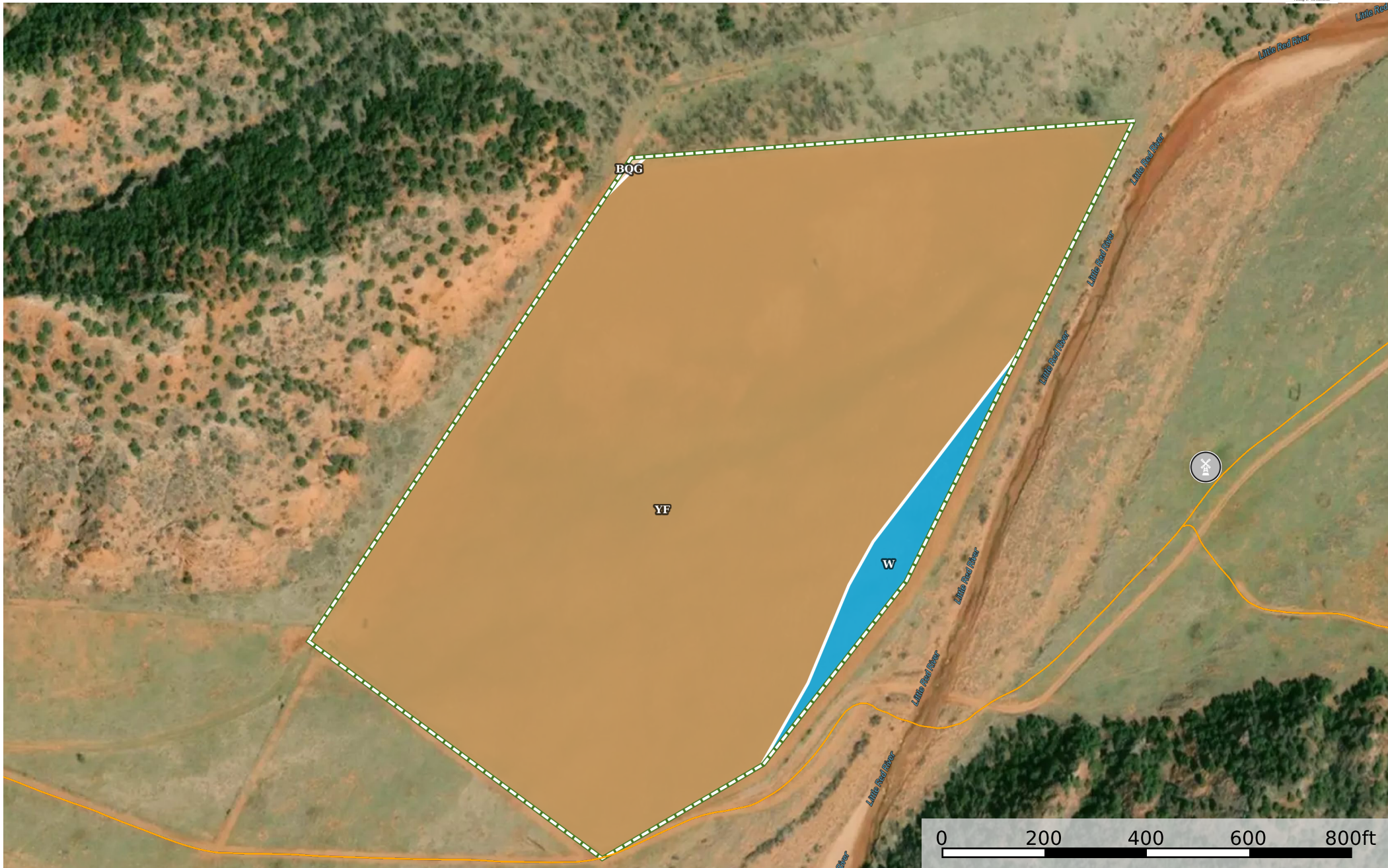


Evans Ranch

Texas, AC +/-



- | | | | | | | | | | | | | | |
|------------------------|-----------------|------|--------------|-----------------|--------------|--------------------|----------|----------------|--------|-------------------------|-------------------------|--------------|------------------------|
| Electric fence charger | Road washed out | Pier | Barn | Foreman's House | Main House | Water Storage Tank | Windmill | Panoramic View | Spring | Gate | Trough | Water Line T | Water Line T and Valve |
| Air Vent for Pipeline | Water Line T | Star | Fence Corner | Fence Corner | Fence Corner | Well | Pens | Road / Trail | Track | Rough Map of State Land | Wheat Field / Food Plot | Boundary | Masterpiece Lake |

Wheat Field / Food Plot 26.58 ac

| SOIL CODE | SOIL DESCRIPTION | ACRES | % | CPI | NCCPI | CAP |
|-----------|---|----------|-------|-----|-------|------|
| Yf | Westola fine sandy loam, dry, 0 to 1 percent slopes, frequently flooded | 25.6 | 96.31 | 0 | 35 | 5w |
| W | Water | 0.96 | 3.61 | 0 | - | 8 |
| BQG | Burson and Quinlan soils steep | 0.02 | 0.08 | 0 | 3 | 7s |
| TOTALS | | 26.58(*) | 100% | - | 33.71 | 5.11 |

(*) Total acres may differ in the second decimal compared to the sum of each acreage soil. This is due to a round error because we only show the acres of each soil with two decimal.

