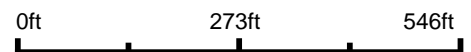


Aerial Map



©2025 AgriData, Inc.

Boundary Center: 38° 29' 19.94, -94° 51' 7.23



15-18S-23E
Miami County
Kansas



Maps Provided By:

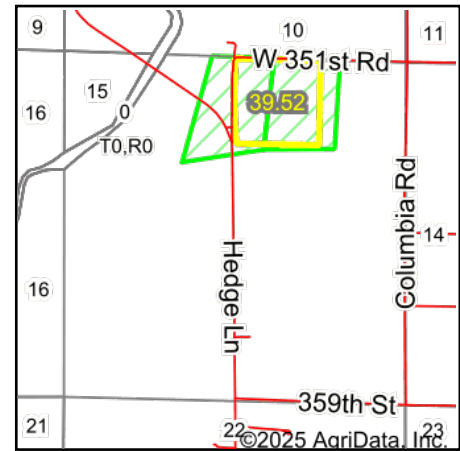
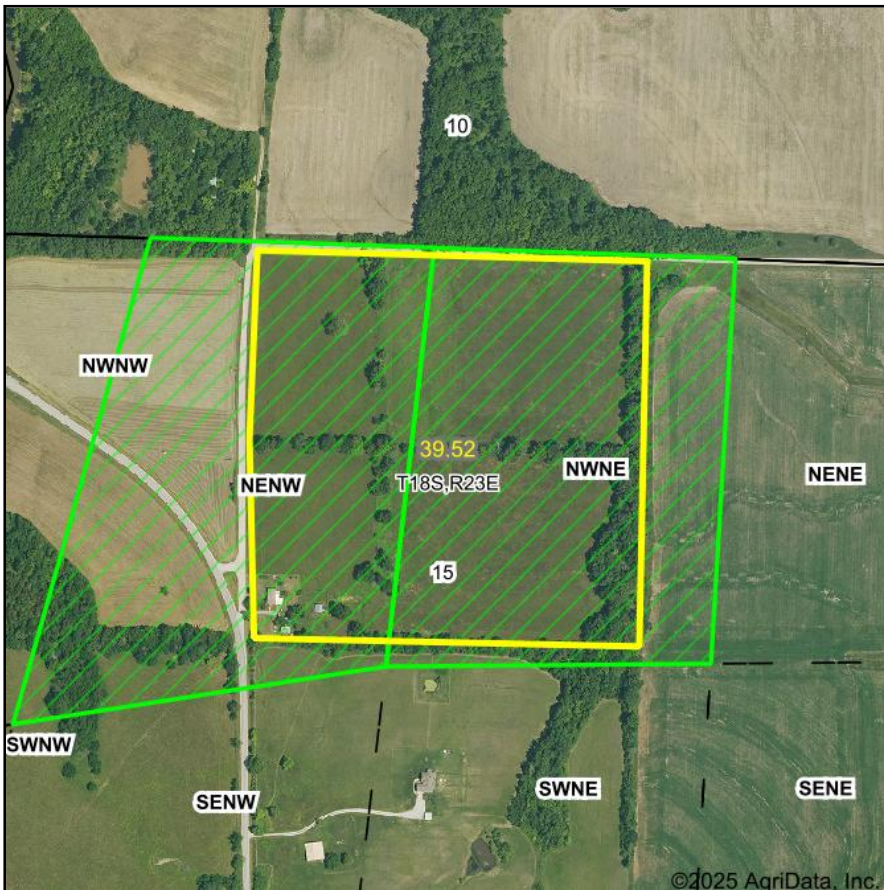


© AgriData, Inc. 2023

www.AgriDataInc.com

1/9/2025

PLSS Legal Description



Acres: **39.52**
 Date: **1/9/2025**
 Township: **Osage**
 County: **Miami**
 State: **Kansas**



Maps Provided By:

 CUSTOMIZED ONLINE MAPPING
 © AgriData, Inc. 2023 www.AgriDataInc.com



PLSS Source: **Various State Sources**

PLSS Note: **No Government Lots. Quarters created by equally splitting the sections**

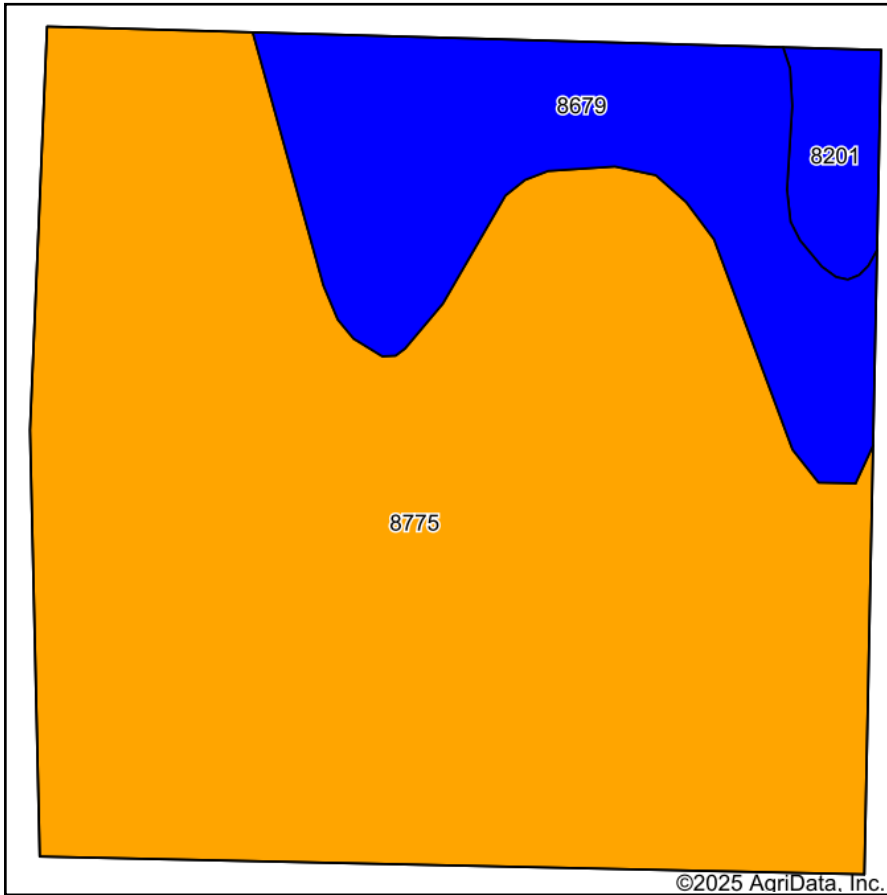
Short Legal:

PT NENW; PT NWNE 15-18S-23E

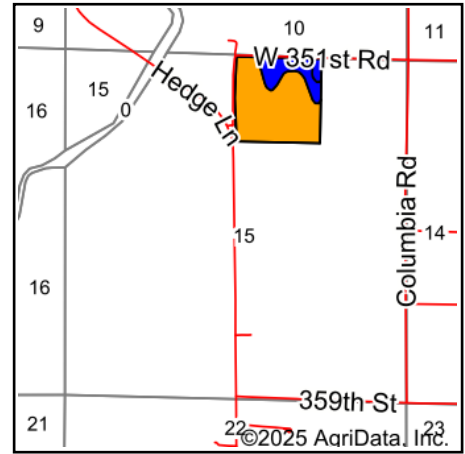
Long Legal:

PART OF THE NE1/4 NW1/4; PART OF THE NW1/4 NE1/4 OF SECTION 15, TOWNSHIP 18 SOUTH, 23 EAST, MIAMI COUNTY, KANSAS

Soils Map



Soils data provided by USDA and NRCS.



State: **Kansas**
 County: **Miami**
 Location: **15-18S-23E**
 Township: **Osage**
 Acres: **39.52**
 Date: **1/9/2025**



Maps Provided By:



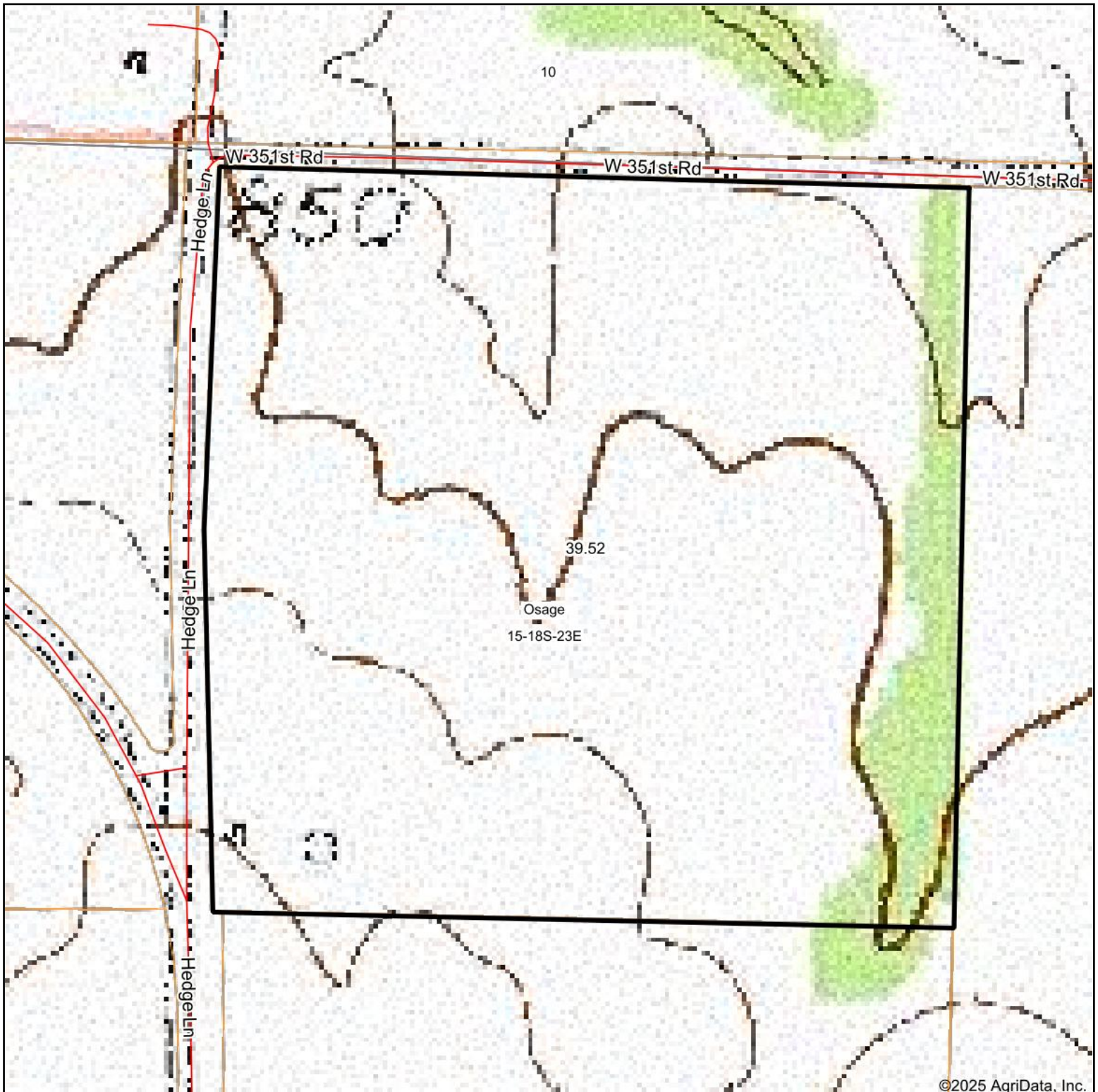
Area Symbol: KS121, Soil Area Version: 25							
Code	Soil Description	Acres	Percent of field	Non-Irr Class Legend	Non-Irr Class *c	Range Production (lbs/acre/yr)	*n NCCPI Soybeans
8775	Kenoma silt loam, 1 to 3 percent slopes	31.19	78.9%		IIIe	3888	59
8679	Dennis silt loam, 1 to 3 percent slopes	7.24	18.3%		IIe	4838	64
8201	Osage silty clay loam, 0 to 1 percent slopes, occasionally flooded	1.09	2.8%		IIw	7282	42
Weighted Average					2.79	4155.6	*n 59.4

*n: The aggregation method is "Weighted Average using all components"

*c: Using Capabilities Class Dominant Condition Aggregation Method

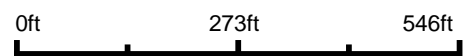
Soils data provided by USDA and NRCS.

Topography Map

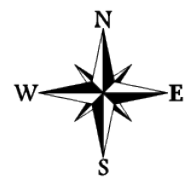


©2025 AgriData, Inc.

Map Center: 38° 29' 19.91, -94° 51' 7.99



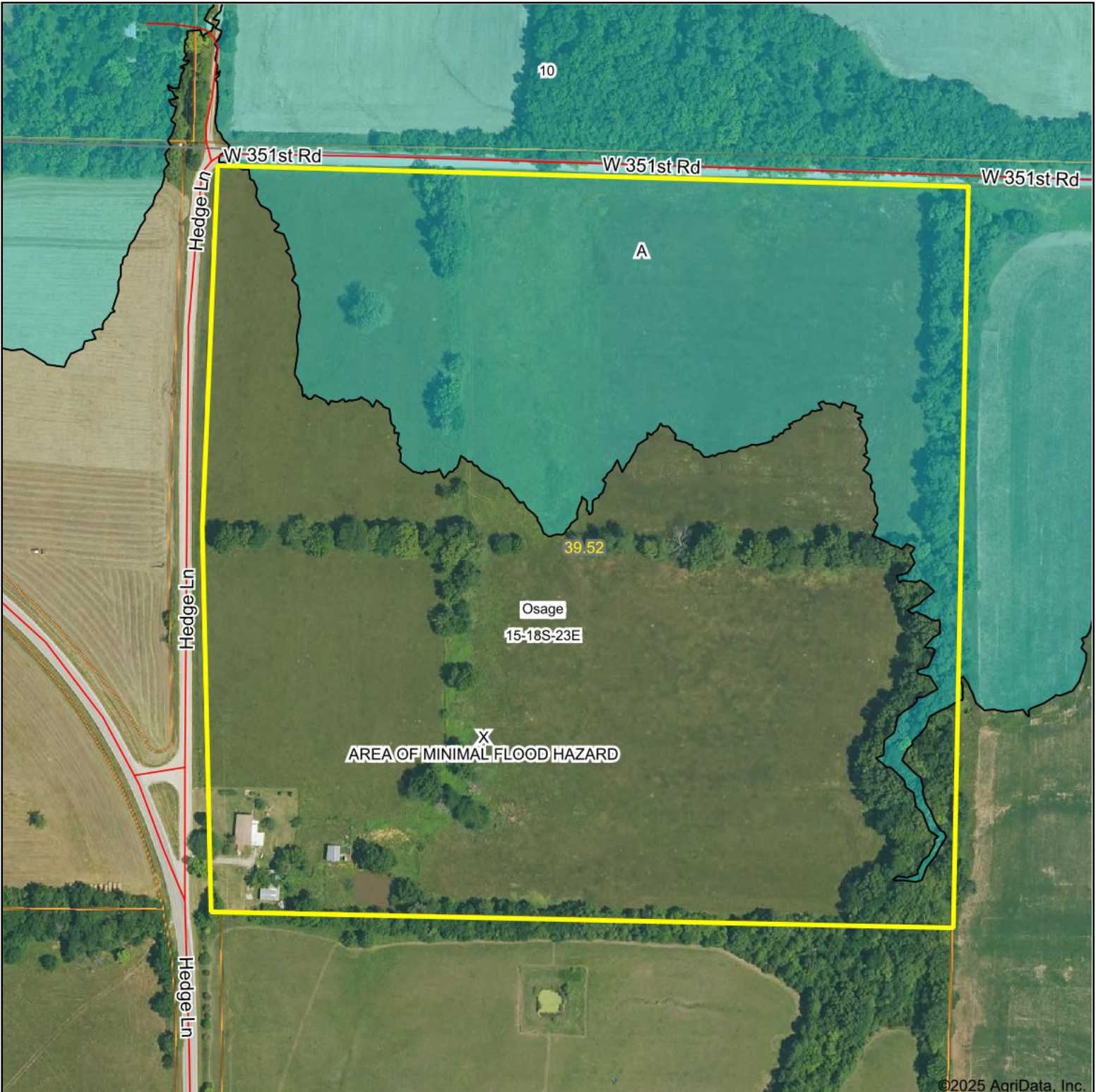
15-18S-23E
Miami County
Kansas



1/9/2025

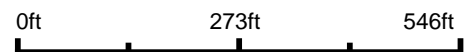
Maps Provided By:
surety
CUSTOMIZED ONLINE MAPPING
© AgriData, Inc. 2023 www.AgriDataInc.com

Aerial Map



©2025 AgriData, Inc.

Boundary Center: 38° 29' 19.94, -94° 51' 7.23



15-18S-23E
Miami County
Kansas



Maps Provided By:



© AgriData, Inc. 2023 www.AgriDataInc.com

1/9/2025

Flood related information provided by FEMA