



FOR SALE

±25.2 Acre Homesite in Honea Path, SC

 | **REEDY**

LAND CO.

A DIVISION OF REEDY PROPERTY GROUP

Parcel Overview

00 Abercrombie Road | Honea Path, SC 29654
Anderson County Tax Map ID: p/o 2650004009



00 Abercrombie Rd

Honea Path, SC 29865

Property Highlights

- Pasture
- Mix of hardwoods and pines
- Creek located at the back of the property
- Excellent topography
- Potential public water
- Road Frontage: ± 256 ft on Abercrombie Road
- Zoning: Unzoned
- Schools: Honea Path Elementary & Middle School, and Belton Honea Path High School

Location Highlights

- ± 10 min to Belton
- ± 10 min to Honea Path
- ± 25 min to Anderson
- ± 30 min to Lake Secession
- ± 40 min to Greenville

Offering Summary

Lot Size: ± 25.20 Acres

Sale Price: \$330,000.00

Acreage, taxes, utilities and lot dimensions to be verified by Buyer and/or Buyers agent

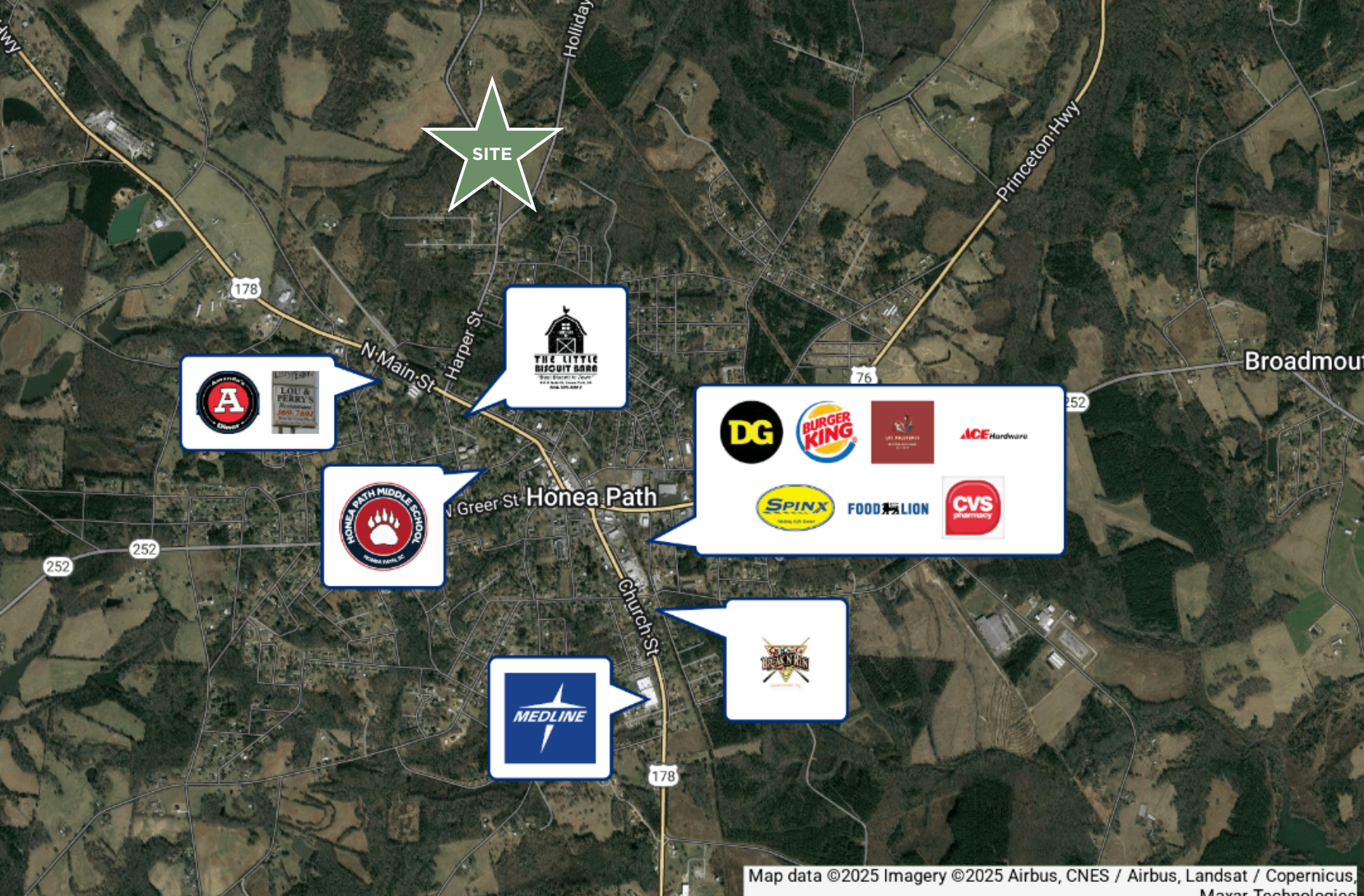


Property Photos



Map

Honea Path, SC



Map data ©2025 Imagery ©2025 Airbus, CNES / Airbus, Landsat / Copernicus, Maxar Technologies

Contact Information

Reedy Land Co

LAND IS MORE THAN DIRT. IT'S YOUR LEGACY.

Whether you're building on a dream or managing generational wealth, the land you choose to call home is deeply personal.

People. Loyalty. Trust. These are the foundations of our approach to real estate. We connect people to places. We guide development for future generations. And, we transform your vision of the "good life" into your everyday life.



Anderson Drake

864.546.0342

adrake@reedypg.com

