

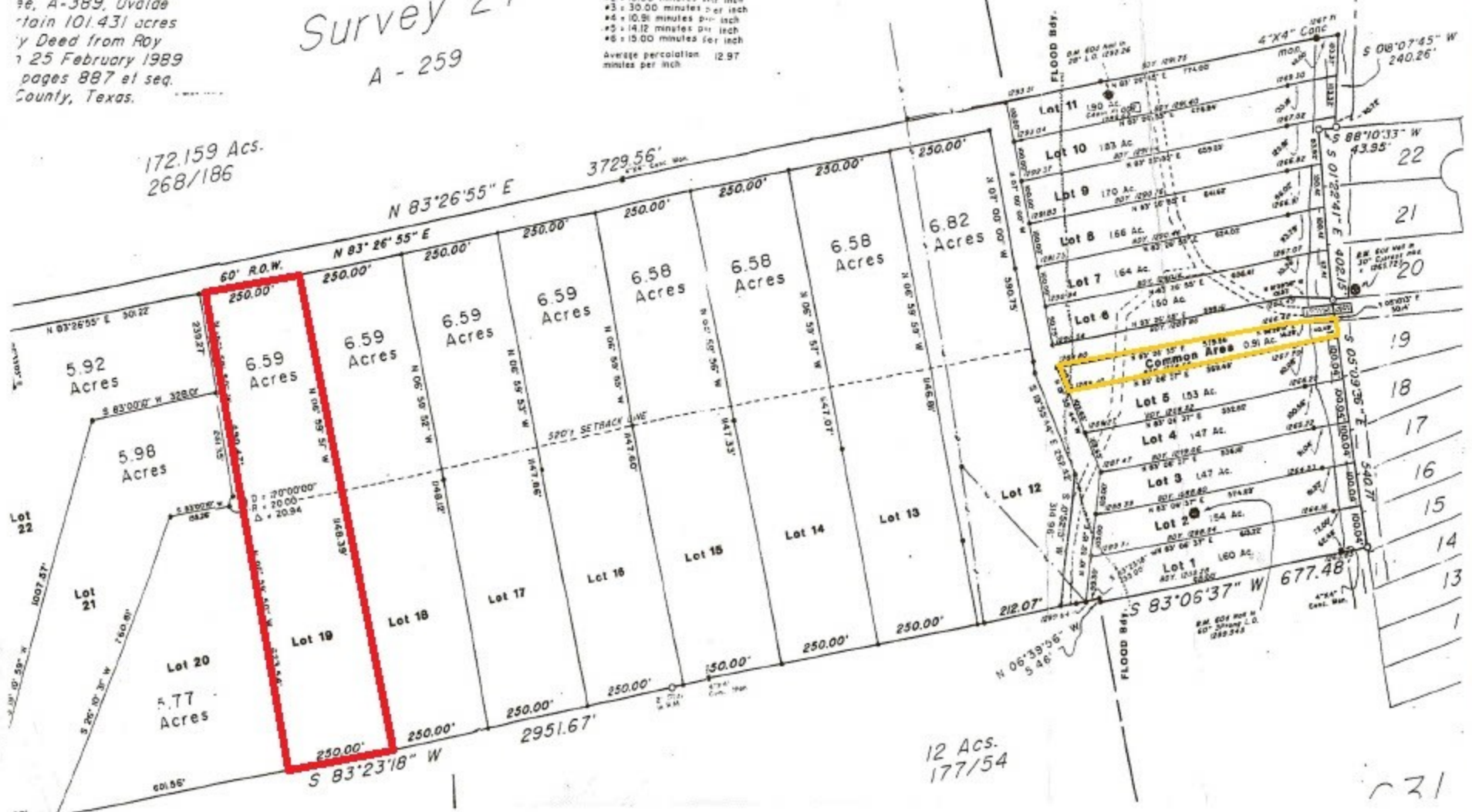
# COMANCHE CROSSING

Re. A-389, Uvalde  
 contain 101.431 acres  
 by Deed from Roy  
 7 25 February 1989  
 pages 887 et seq.  
 Comanche County, Texas.

*Survey 27*  
 A - 259

**PERCOLATION TESTS**  
 #1 = 10.00 minutes per inch  
 #2 = 10.00 minutes per inch  
 #3 = 30.00 minutes per inch  
 #4 = 10.50 minutes per inch  
 #5 = 14.12 minutes per inch  
 #6 = 15.00 minutes per inch  
 Average percolation = 12.97  
 minutes per inch

172.159 Ac.  
 268/186



12 Ac.  
 177/54

031