

15.2 acres

Lake Greenwood, Waterfront

\$225,000



Terrapin Point Rd.

Hodges, SC 29653

Property Features

- Two lakefront parcels totaling 15.1 acres: \$225,000
 - Parcel A - 6941-178-141 (6.1 acres): \$90,894
 - Parcel B - 6941-210-085 (9 acres): \$134,106
- Located in Terrapin Point, an exclusive gated community with spacious lots
- Convenient, direct access to the lake
- Private neighborhood amenities include a boat ramp, courtesy dock, and secure boat storage lot
- Equipped with well and septic systems for added convenience
- Prime location on Northern Lake Greenwood, at the mouth of the Saluda River
- ± 12 minutes to Downtown Greenwood
- ± 35 minutes to Greenville
- ± 15 minutes to Self-Regional Hospital



ALEC MONCINI
ASSOCIATE
(864) 238-5640
AMONCINI@NAIEF.COM

BRIAN HAMMOND
SENIOR ASSOCIATE
(864) 431-7713
BHAMMOND@NAIEF.COM

RICHARD HEATLY
ASSOCIATE
(864) 909-4338
RHEATLY@NAIEF.COM

SCOUT HAMMOND
ASSOCIATE
(864) 580-8572
SHAMMOND@NAIEF.COM

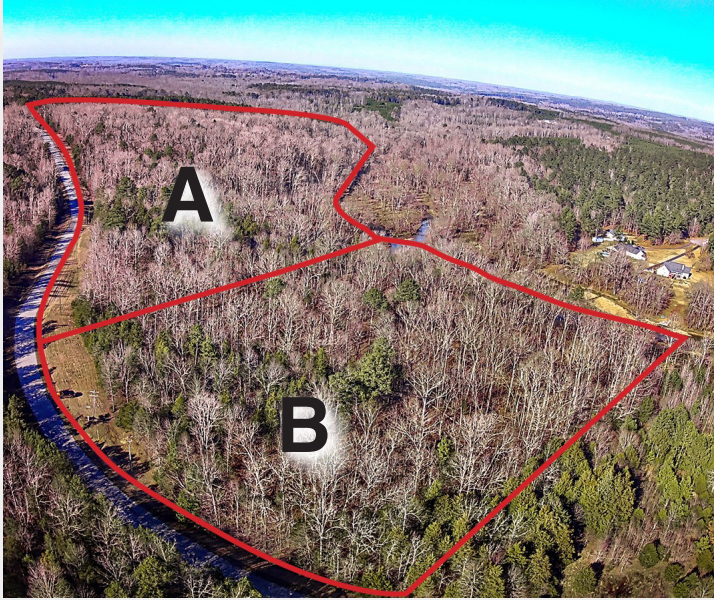
FOR SALE

15.2 acres

Lake Greenwood, Waterfront

\$225,000

Property Photos



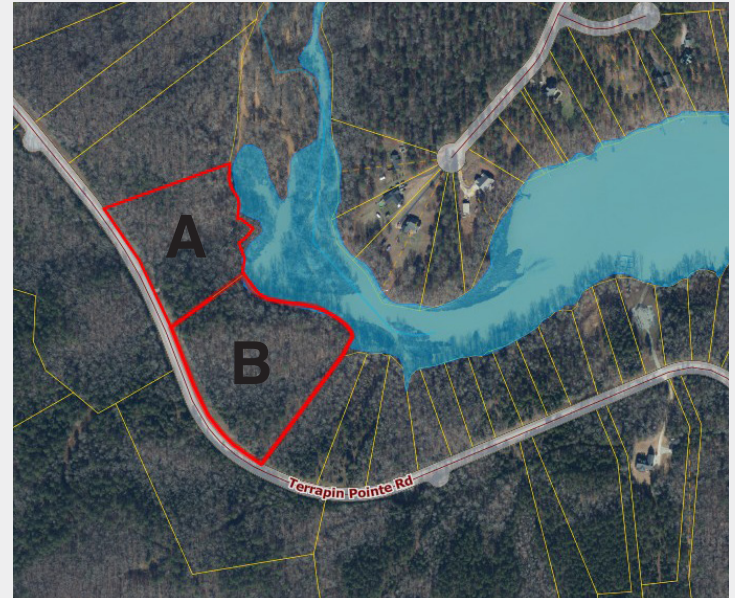
Outline of Property



Neighborhood boat ramp and dock - looking towards lake



Neighborhood boat ramp and dock



Parcel overview