

# CORDER

AND ASSOCIATES, LLC



Boundary lines are approximations

## *The Last Best Place*

0 South Peak Rd., Raynesford, MT 59469

*Offered at \$990,000*

*Presented Exclusively by*  
**Trampus Corder, Broker/Owner**

833-783-3224 toll free  
406-622-3224 office  
Corderland@gmail.com



## Property Information

**Acres:** 160 deeded acres

**Taxes:** \$764.00 (2024)

**Legal:** S04, T18 N, R08 E, SE4

**Utilities:** Natural gas is on adjacent property; Electricity options Summer 2025

**Income Potential:** Leased out annually for pasture

**Water rights:** Yes

**Water:** Cora Creek; Natural springs

**Covenants/HOAs:** None

**Fencing:** 3 sides

**Outbuildings:** 40' x 100' shop; 16' x 40' shed

**Hunting District:** 447

**Access:** Legal access via gravel road

**Special Enhancements/Extras:** 40' x 28' have insulated walls and ceiling sheetrock with trim. All the electrical work is run, but the living space currently operates from a generator.

## Executive Summary

Discover the beautiful aspects of Montana, all rolled into one adaptable property! From where the 40' x 100' shop is situated, enjoy the sweeping vistas of the Highwood Mountains and the gently rolling terrain with coulees resembling veins supporting natural springs and various wildlife species. Cora Creek traverses the northern portion of these 160 acres. North of Raynesford, Montana, this property offers a rural lifestyle with plenty of space to explore and fresh air to breathe. The seller has invested significant effort into the infrastructure and dirt work, with three sides fenced, allowing you to bring your horses and cows. At the end of the gravel driveway is a shop, barn, shed, and corrals. A 2,800 sq. ft. portion of the shop has already been finished with insulation, sheetrock, and trim with the electrical all run in. The area operates from a generator and could be further customized to a buyer's desire. Build your dream home or a vacation cabin. Take advantage of the short commute to Belt or Great Falls or

use it as a base camp for hunting adventures. The Little Belt Mountains and Highwood Mountains provide exceptional hunting, fishing, hiking, and other outdoor recreation. Showdown Ski area is a short drive away, perfect for a day or weekend of skiing on fresh powder. Not bringing any animals? Lease out the pasture land for supplemental income. Experience the fusion of beauty, versatility, and opportunity in this Montana property!



## *Local Area*

*Beginning as a railroad town, Raynesford was named after the daughter of the man who sold the land to the railroad. Raynesford joins the countless small settlements that fill the coulees and gulches east of Great Falls and lies north of the ghost towns of Albright and Hughesville. Additionally, Sluice Boxes State Park is just south consisting of eight miles of the Belt Creek Canyon. Soaring cliffs and precipitous ledges mark the Belt Creek Canyon as it slices out of the Little Belt Mountains and winds toward the town of Belt.*

*Many features make Belt, Montana a much-desired haven. For example, it attracts rugged competition from all over to participate in its annual rodeo and is still able to offer a small-town feel and experience. Belt is home to the famous Harvest Moon Brewery which combines Montana's luscious grain with fresh and clean water out of local streams and wells to make a variety of beers sought after by connoisseurs from all over. You can find ample history throughout the town or in the Belt Museum housed in the old town jail! In addition, Belt is listed on the National Register of Historic Places and claims Montana's very first coal mine. Belt's name comes from a nearby mountain, Belt Butte, which looks like it has a belt of rocks around it. The Highwood and Little Belt mountains provide areas for hiking, biking, camping, creek fishing, hunting, and recreating, and the Sluice Boxes State Park is nearby as well. Great Falls is a mere 23 miles away and has an International Airport and prestigious medical facilities for your convenience.*



## *Area Attractions*

*Central Montana features some of Montana's best representation of the rolling plains and rugged mountain ranges. Recreational and cultural opportunities display Montana's western past and illustrate the beauty of its present.*



### **Fishing**

*Central Montana is excellent walleye country. The mighty Missouri River is the longest in North America flowing over 2,341 miles. Widow Coulee offers a public fishing site. The terrain surrounding this area is beautifully described as a painting with colors streaming through the cliffs along the river as they wind along the prairie. In this stretch of the Missouri River, game fish to hook include Catfish, Bass, Northern Pike, Walleye, and Trout.*

*A variety of methods can be used as well as a variety of bait.*

### **Belt Creek**

*One of Montana's many hidden gems, Belt Creek flows through the central portion of the state. Perhaps one of the most beautiful sections of the creek is the Sluice Box Canyon section. It is an 8-mile stretch that displays stunning limestone formations with sheer cliff walls that climb for hundreds of feet. In the deep pools, fish for rainbow or brown trout. You can also catch cutthroat or brook trout. Willow, cottonwood, chokecherry, and wild roses grow along the banks while the scenery unfolds and captivates.*

### **Ackley Lake State Park**

*Nestled in the heart of Montana, Ackley Lake State Park offers 290 acres of park that includes mountain views and Ackley Lake. The lake provides fishing, boating, swimming, birdwatching, picnicking, and camping. It is stocked with Rainbow Trout and Tiger Muskie. The park has camping sites and two boat launches.*



## **Hunting**

*Hunting is a Montana tradition. Central Montana still lives up to that tradition. Residents and nonresidents alike enjoy hunting a variety of big game animals and upland game birds. For non-residents, the permit application deadline for deer and elk hunting in Montana is April 1. All applications are submitted online. The antelope hunting license deadline is early June. The Montana Fish, Wildlife and Parks website has forms and more information about licenses. The property is located in Hunting District 447. The Highwood Mountains are excellent for elk*

*hunting, but you must be drawn for a special tag. The grain fields that encompass this region supply food for antelope, white-tailed and mule deer, and game birds. The coulees are essential cover for game as they are going to and from the river for hydration and lush vegetation.*

*If you are a bow and arrow hunter, be sure to check archery requirements. A bow license, in addition to the proper hunting license, is required during Archery Only Season for any species or to archery hunt in an Arch-Equip-only area or hunting district.*

*Upland game bird licenses, including a license for pheasants, may be purchased over the counter along with your conservation license. Hungarian Partridge and several varieties of grouse are common in Central Montana. Turkey licenses are also sold over the counter except for special spring and fall turkey hunts. Hunting for Montana migratory birds requires a Montana migratory bird license and a federal waterfowl stamp.*



*The Block Management program managed through Montana Fish, Wildlife and Parks offers access to private land from 1,230 landowners and covers 7.4 million acres of land. There is no charge to hunt on Block Management land. A Hunters Access Guide is published each year giving details about the program, and it is usually available by August 15. Central Montana also has public land managed by the U. S. Forest Service and Bureau of Land Management.*

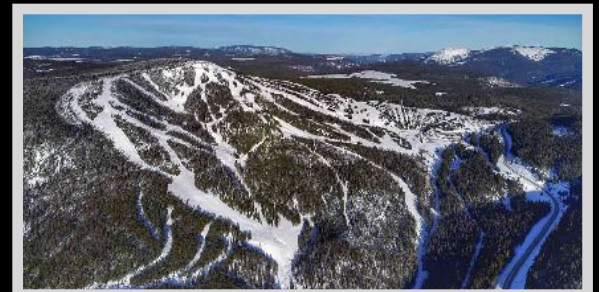


## **Highwood Mountains**

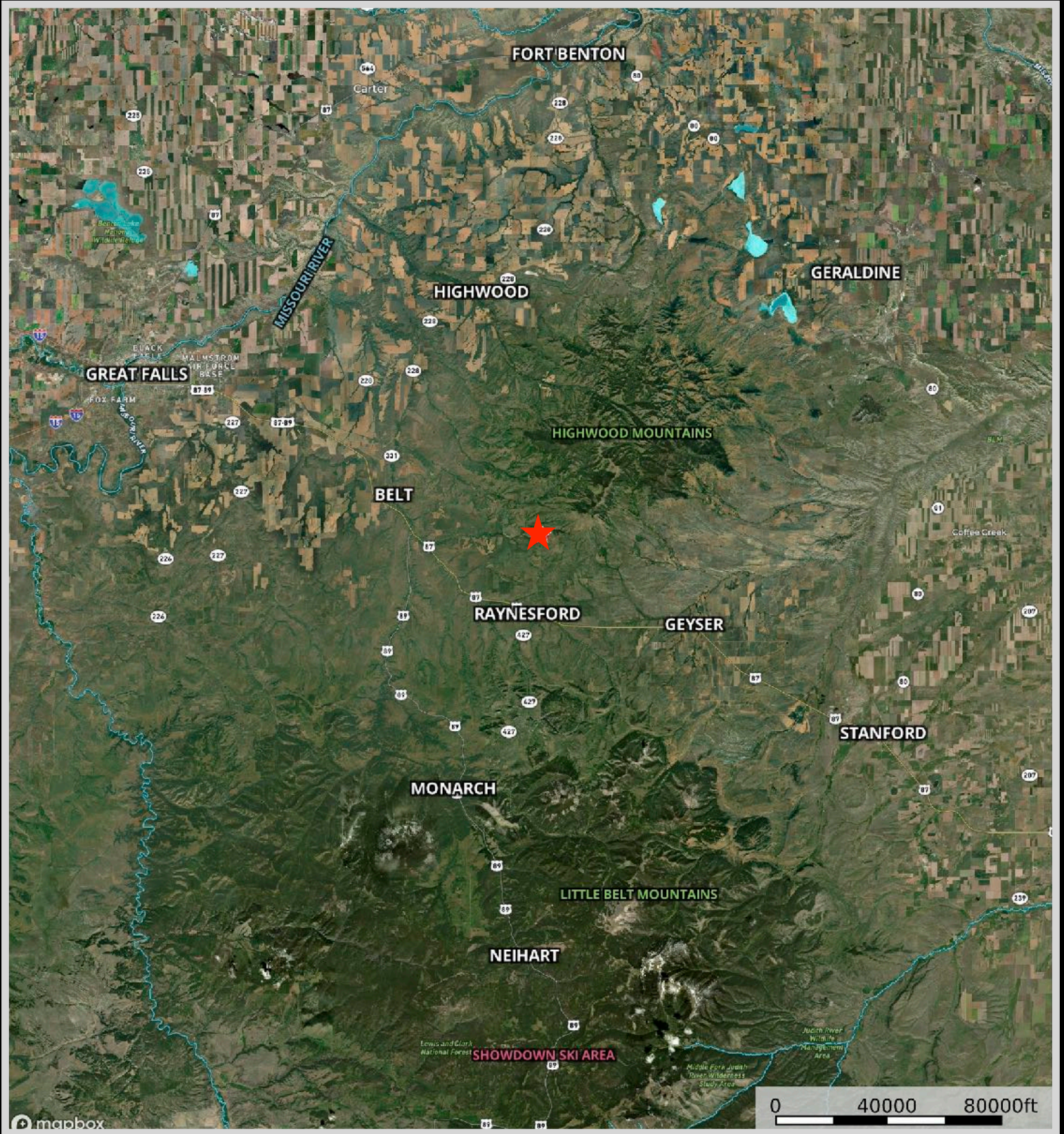
*In Chouteau County near Highwood, Belt Creek and Highwood Creek provide Brookie Trout fishing. The deep pools along the cliffs and rock formations are great for fly fishing or for catching bigger trout. The Highwood Mountains are a popular destination for camping, fishing, ATV-ing, horseback riding, hiking, and enjoying a fantastic scenic drive. There is a campground with maintained sites and a scenic mountain drive that takes you through several creek crossings, mountain meadows, and gorgeous forests until you reach Geysers, Montana. Wildlife is abundant as you drive past farm fields and ranches. It isn't uncommon to meet a cattle drive! Moose, black bear, bald eagle, fox, coyote, white-tailed and mule deer, and mountain lion are some animals you can catch glimpses of.*

## **Showdown Ski Area**

*Ski in the heart of Montana at Showdown Ski Area and the Silver Crest Nordic Trail System which consists of weekly groomed trails for cross-country skiing or snowshoeing. The Kings Hill Snowmobiling System is considered to be one of the finest in Montana and has over 200 miles of marked and groomed trails.*



# Property Maps



The information is provided by outside sources and deemed reliable but not guaranteed by the brokerage firm, its agents or representatives. Buyers and their agents are encouraged to conduct due diligence, and verify to their satisfaction, the information contained herein regarding property.