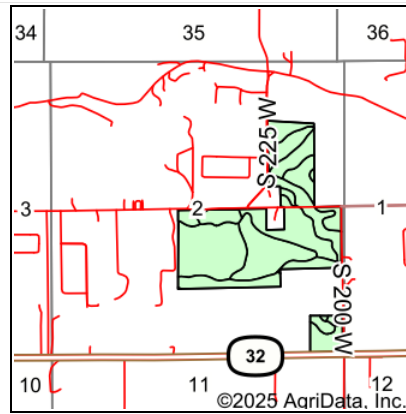
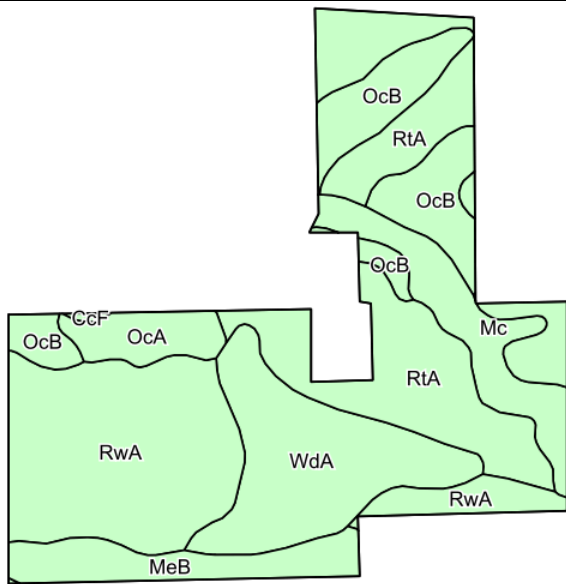


Soils Map



State: **Indiana**
 County: **Montgomery**
 Location: **2-18N-5W**
 Township: **Union**
 Acres: **119.81**
 Date: **1/10/2025**



Maps Provided By:



Soils data provided by USDA and NRCS.

©2025 AgriData, Inc.

© AgriData, Inc. 2023

www.AgriDataInc.com

Area Symbol: IN107, Soil Area Version: 29

Code	Soil Description	Acres	Percent of field	Non-Irr Class *c	Corn Bu	Grass legume hay Tons	Pasture AUM	Soybeans Bu	Winter wheat Bu	*n NCCPI Overall	*n NCCPI Corn	*n NCCPI Soybeans
RwA	Rush variant silt loam, 0 to 2 percent slopes	28.96	24.1%	I	145	5	10	51	65	89	89	72
RtA	Rush silt loam, 0 to 1 percent slopes	28.35	23.7%	I	155	5	10	54	78	89	89	77
WdA	Waynetown silt loam, 0 to 2 percent slopes	18.12	15.1%	IIw	160	5	11	52	72	83	83	70
OcB	Ockley silt loam, 2 to 6 percent slopes	13.94	11.6%	IIe	132	5	9	46	66	77	77	68
MeB	Martinsville-Ockley silt loams, till substratums, 2 to 6 percent slopes	13.43	11.2%	IIe	148	5	10	51	73	85	85	72
Mc	Mahalasville silty clay loam, gravelly substratum	9.54	8.0%	IIw	185	6	12	53	74	91	91	87
OcA	Ockley silt loam, 0 to 2 percent slopes	4.42	3.7%	Ie	134	5	9	47	66	84	84	73
MeC	Martinsville-Ockley silt loams, till substratums, 6 to 12 percent slopes	1.87	1.6%	IIIe	139	5	9	48	68	83	83	70
MdD2	Martinsville-Ockley loams, till substratums, 12 to 18 percent slopes, eroded	1.00	0.8%	Ive	115	4	8	40	57	74	74	56
CcF	Casco loam, 18 to 35 percent slopes	0.18	0.2%	VIIe						13	13	6
Weighted Average				1.52	150.7	5.1	10.1	51.1	70.8	*n 85.9	*n 85.9	*n 73.4

*n: The aggregation method is "Weighted Average using all components"

*c: Using Capabilities Class Dominant Condition Aggregation Method

Soils data provided by USDA and NRCS.