

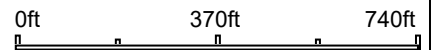
Aerial Map



©2025 AgriData, Inc.



Boundary Center: 39° 26' 19.24, -90° 38' 45.02



FIRST ILLINOIS
AG GROUP

Maps Provided By:



© AgriData, Inc. 2023

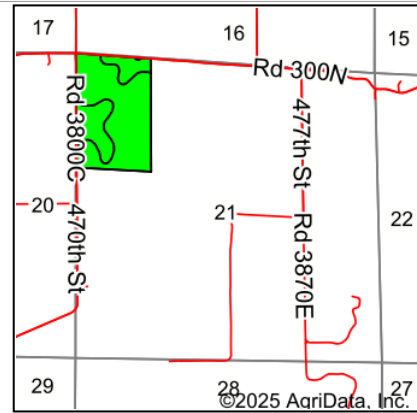
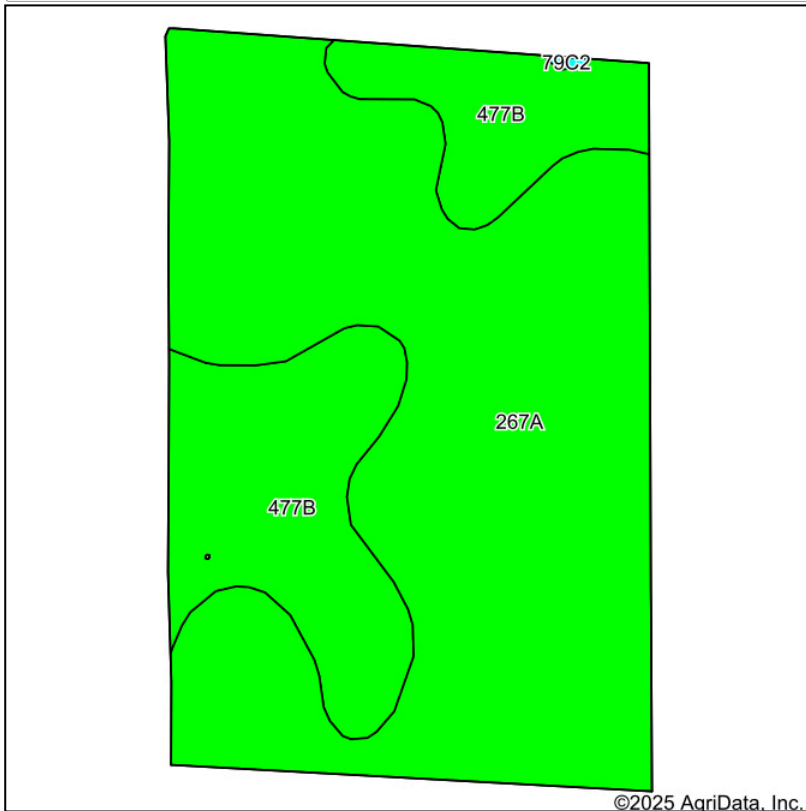
www.AgrIDataInc.com

21-7S-2W
Pike County
Illinois



1/23/2025

Soils Map



State: **Illinois**
 County: **Pike**
 Location: **21-7S-2W**
 Township: **Pearl**
 Acres: **62.25**
 Date: **1/23/2025**

FIRST ILLINOIS
 AG GROUP

Maps Provided By:
surety
 CUSTOMIZED ONLINE MAPPING
 © AgriData, Inc. 2023 www.AgriDataInc.com

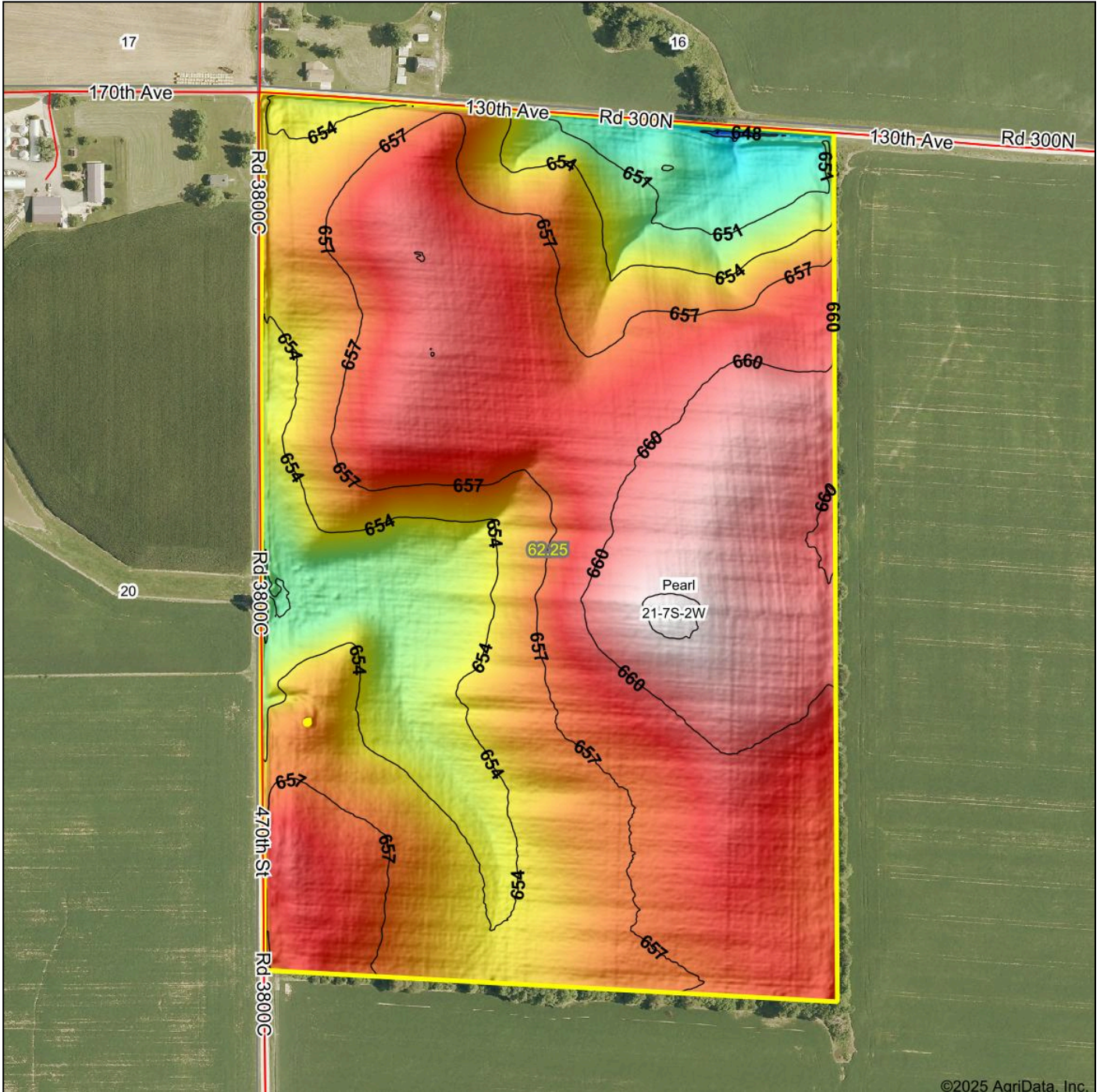


Area Symbol: IL149, Soil Area Version: 19

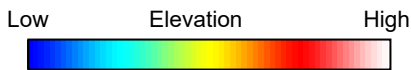
Code	Soil Description	Acres	Percent of field	Il. State Productivity Index Legend	*Corn Bu/A	*Soybeans Bu/A	*Wheat Bu/A	*Oats Bu/A b	*Sorghum c Bu/A	*Grass-legume e hay, T/A	*Crop productivity index for optimum management
267A	Caseyville silt loam, 0 to 2 percent slopes	45.03	72.3%		171	52	65	0	124	5.30	126
**477B	Winfield silt loam, 2 to 5 percent slopes	17.15	27.6%		**160	**50	**62	0	**122	**5.00	**118
**79C2	Menfro silt loam, 5 to 10 percent slopes, eroded	0.07	0.1%		**153	**47	**59	0	**113	**4.60	**112
Weighted Average					167.9	51.4	64.2	*-	123.4	5.2	123.8

Table: Optimum Crop Productivity Ratings for Illinois Soil EFOTG are sourced from Bulletin 811 calculated Map Unit Base Yield Indices, and adjusted (Adj) for slope, erosion, and surface texture. Publication Date: 02-08-2023
 Crop yields and productivity (B811 EFOTG) are maintained at the following USDA web site: 2023 Illinois Soil Productivity and Yield Indices: <https://efotg.sc.egov.usda.gov/#/state/IL/documents/section=2&folder=52809>
 * The flood/pond factor has been removed for B811 indexes and yields.
 ** Base indexes from Bulletin 811 adjusted for slope, erosion, and surface texture according to the II. Soils EFOTG
b Soils in the southern region were not rated for oats and are shown with a zero "0".
c Soils in the northern region or in both regions were not rated for grain sorghum and are shown with a zero "0".
e Soils in the well drained group were not rated for grass-legume and are shown with a zero "0".

Topography Hillshade

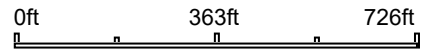


©2025 AgriData, Inc.



FIRST ILLINOIS
AG GROUP
Maps Provided By:
surety
CUSTOMIZED ONLINE MAPPING
© AgriData, Inc. 2023 www.AgriDataInc.com

Source: USGS 1 meter dem
Interval(ft): 3
Min: 644.4
Max: 663.3
Range: 18.9
Average: 656.8
Standard Deviation: 3.08 ft



1/23/2025

21-7S-2W
Pike County
Illinois

Boundary Center: 39° 26' 19.24, -90° 38' 45.02