

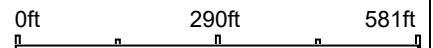
Aerial Map



©2025 AgriData, Inc.



Boundary Center: 39° 25' 52.8, -90° 38' 45.56



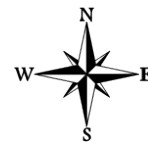
**FIRST ILLINOIS
AG GROUP**

Maps Provided By:



© AgriData, Inc. 2023 www.AgriDataInc.com

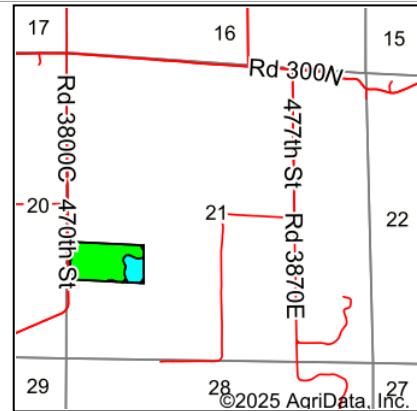
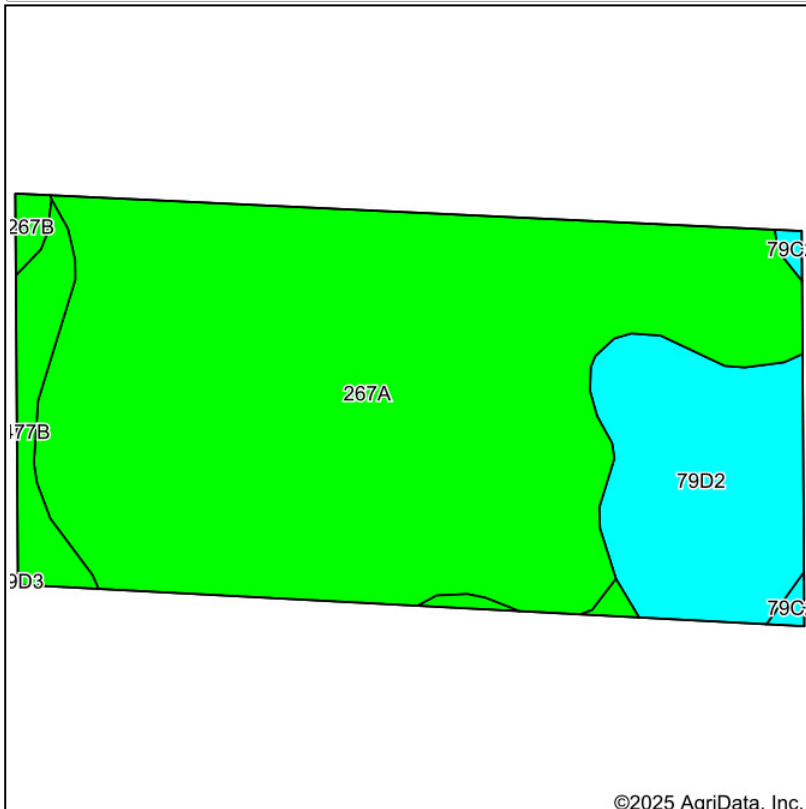
**21-7S-2W
Pike County
Illinois**



1/23/2025

Field borders provided by Farm Service Agency as of 5/21/2008.

Soils Map



State: **Illinois**
 County: **Pike**
 Location: **21-7S-2W**
 Township: **Pearl**
 Acres: **20.9**
 Date: **1/23/2025**

**FIRST ILLINOIS
AG GROUP**

Maps Provided By:
surety
CUSTOMIZED ONLINE MAPPING
© AgriData, Inc. 2023 www.AgriDataInc.com



Soils data provided by USDA and NRCS.

©2025 AgriData, Inc.

Area Symbol: IL149, Soil Area Version: 19											
Code	Soil Description	Acres	Percent of field	Il. State Productivity Index Legend	*Corn Bu/A	*Soybeans Bu/A	*Wheat Bu/A	*Oats Bu/A ^b	*Sorghum ^c Bu/A	*Grass-legume ^e hay, T/A	*Crop productivity index for optimum management
267A	Caseyville silt loam, 0 to 2 percent slopes	16.07	76.9%	■	171	52	65	0	124	5.30	126
**79D2	Menfro silt loam, 10 to 18 percent slopes, eroded	3.52	16.8%	■	**144	**44	**55	0	**106	**4.30	**104
**477B	Winfield silt loam, 2 to 5 percent slopes	1.04	5.0%	■	**160	**50	**62	0	**122	**5.00	**118
**267B	Caseyville silt loam, 2 to 5 percent slopes	0.14	0.7%	■	**169	**51	**64	0	**123	**5.20	**125
**79C2	Menfro silt loam, 5 to 10 percent slopes, eroded	0.13	0.6%	■	**153	**47	**59	0	**113	**4.60	**112
Weighted Average					165.8	50.5	63.1	*-	120.8	5.1	121.8

Table: Optimum Crop Productivity Ratings for Illinois Soil EFOTG are sourced from Bulletin 811 calculated Map Unit Base Yield Indices, and adjusted (Adj) for slope, erosion, and surface texture. Publication Date: 02-08-2023

Crop yields and productivity (B811 EFOTG) are maintained at the following USDA web site: 2023 Illinois Soil Productivity and Yield Indices: <https://efotg.sc.egov.usda.gov/#/state/IL/documents/section=2&folder=52809>

* The flood/pond factor has been removed for B811 indexes and yields.

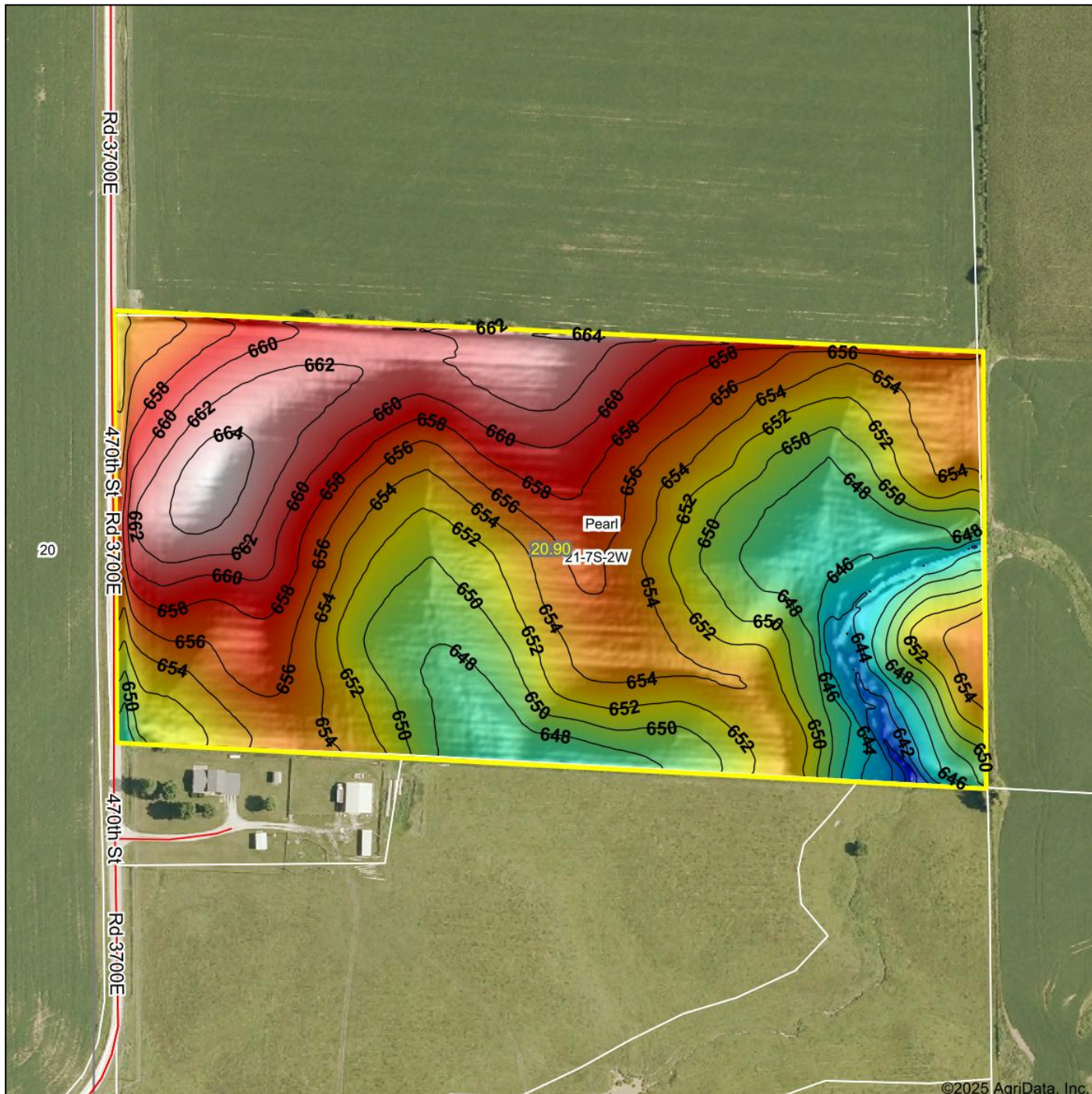
** Base indexes from Bulletin 811 adjusted for slope, erosion, and surface texture according to the Il. Soils EFOTG

^b Soils in the southern region were not rated for oats and are shown with a zero "0".

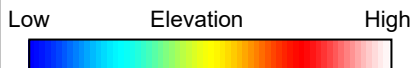
^c Soils in the northern region or in both regions were not rated for grain sorghum and are shown with a zero "0".

^e Soils in the well drained group were not rated for grass-legume and are shown with a zero "0".

Topography Hillshade

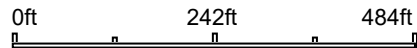


©2025 AgriData, Inc.



© AgriData, Inc. 2023 www.AgriDataInc.com
Field borders provided by Farm Service Agency as of 5/21/2008.

Source: USGS 1 meter dem
Interval(ft): 2
Min: 638.0
Max: 665.4
Range: 27.4
Average: 654.1
Standard Deviation: 5.28 ft



1/23/2025

21-7S-2W
Pike County
Illinois

Boundary Center: 39° 25' 52.8, -90° 38' 45.56