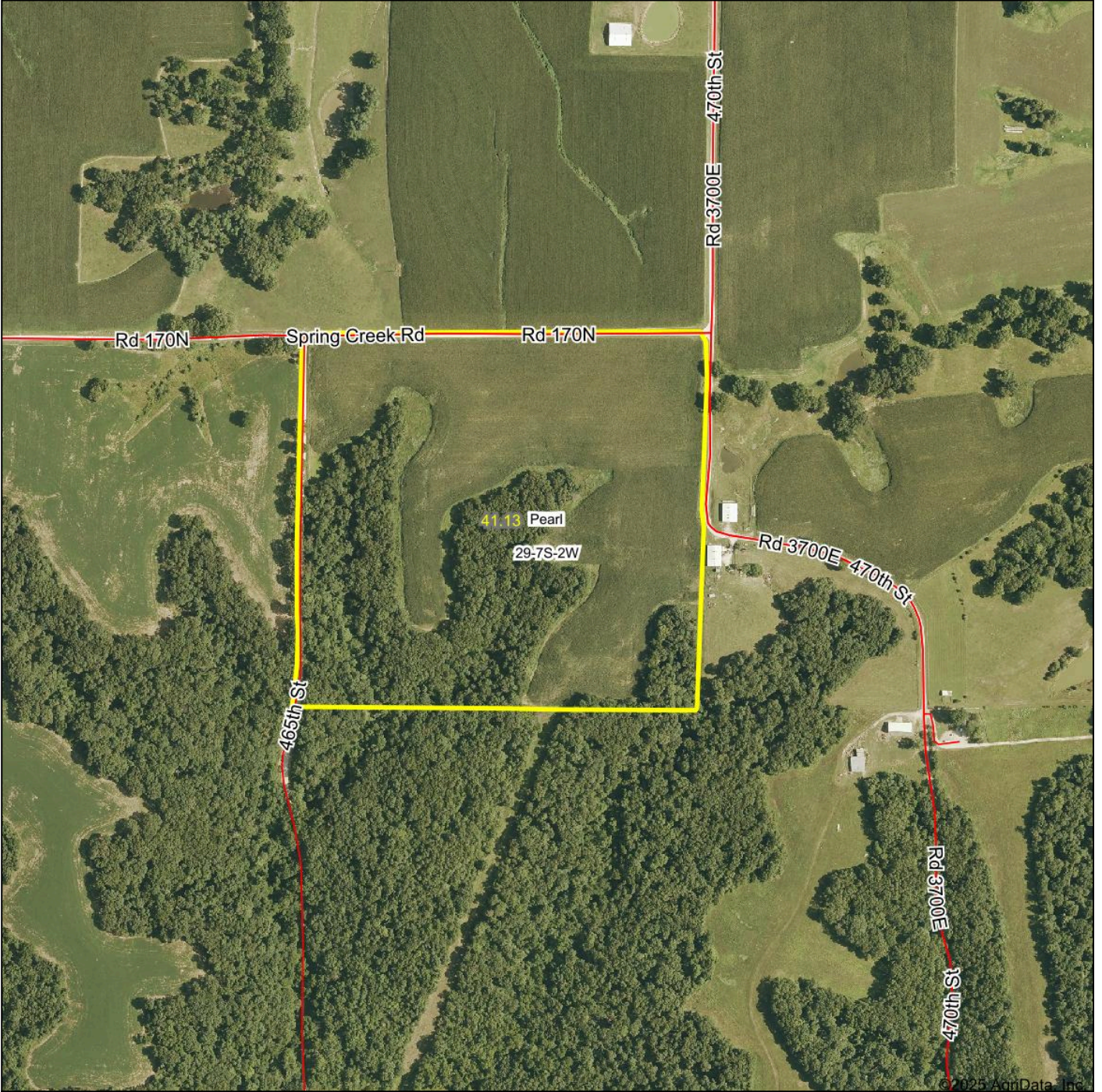


# Aerial Map



© 2025 AgriData, Inc.



Boundary Center: 39° 25' 17.6, -90° 39' 22.53

**FIRST ILLINOIS  
AG GROUP**

Maps Provided By:



© AgriData, Inc. 2023

www.AgrIDataInc.com

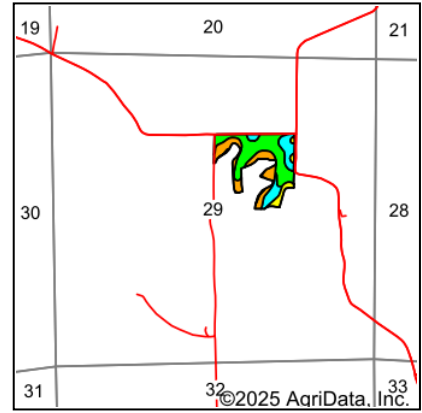
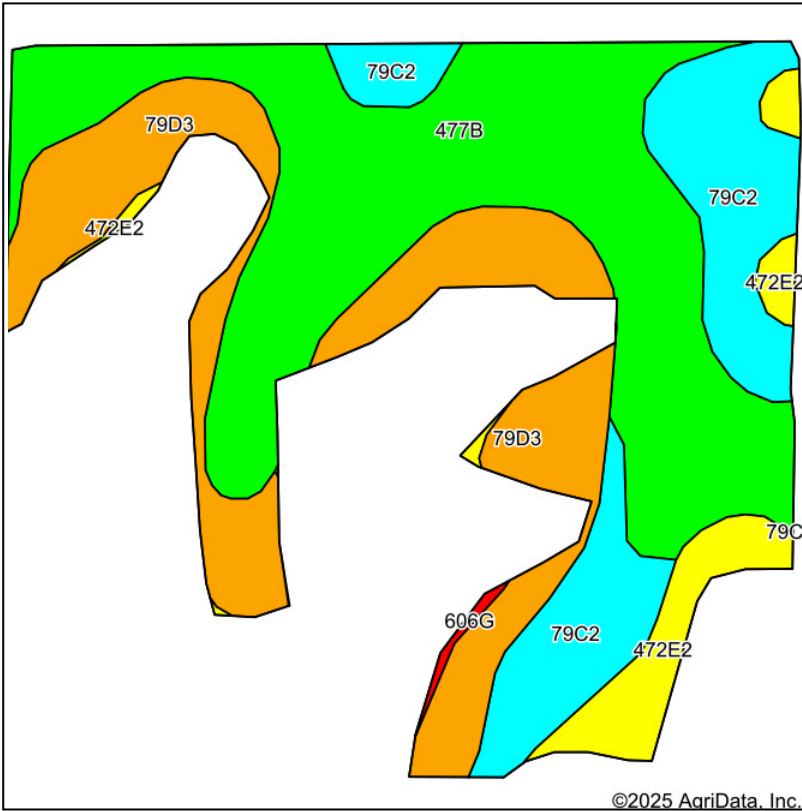
**29-7S-2W  
Pike County  
Illinois**

0ft 536ft 1071ft



1/24/2025

# Soils Map



State: **Illinois**  
 County: **Pike**  
 Location: **29-7S-2W**  
 Township: **Pearl**  
 Acres: **22.64**  
 Date: **1/23/2025**

FIRST ILLINOIS  
 AG GROUP



Soils data provided by USDA and NRCS.

©2025 AgriData, Inc.

Area Symbol: IL149, Soil Area Version: 19

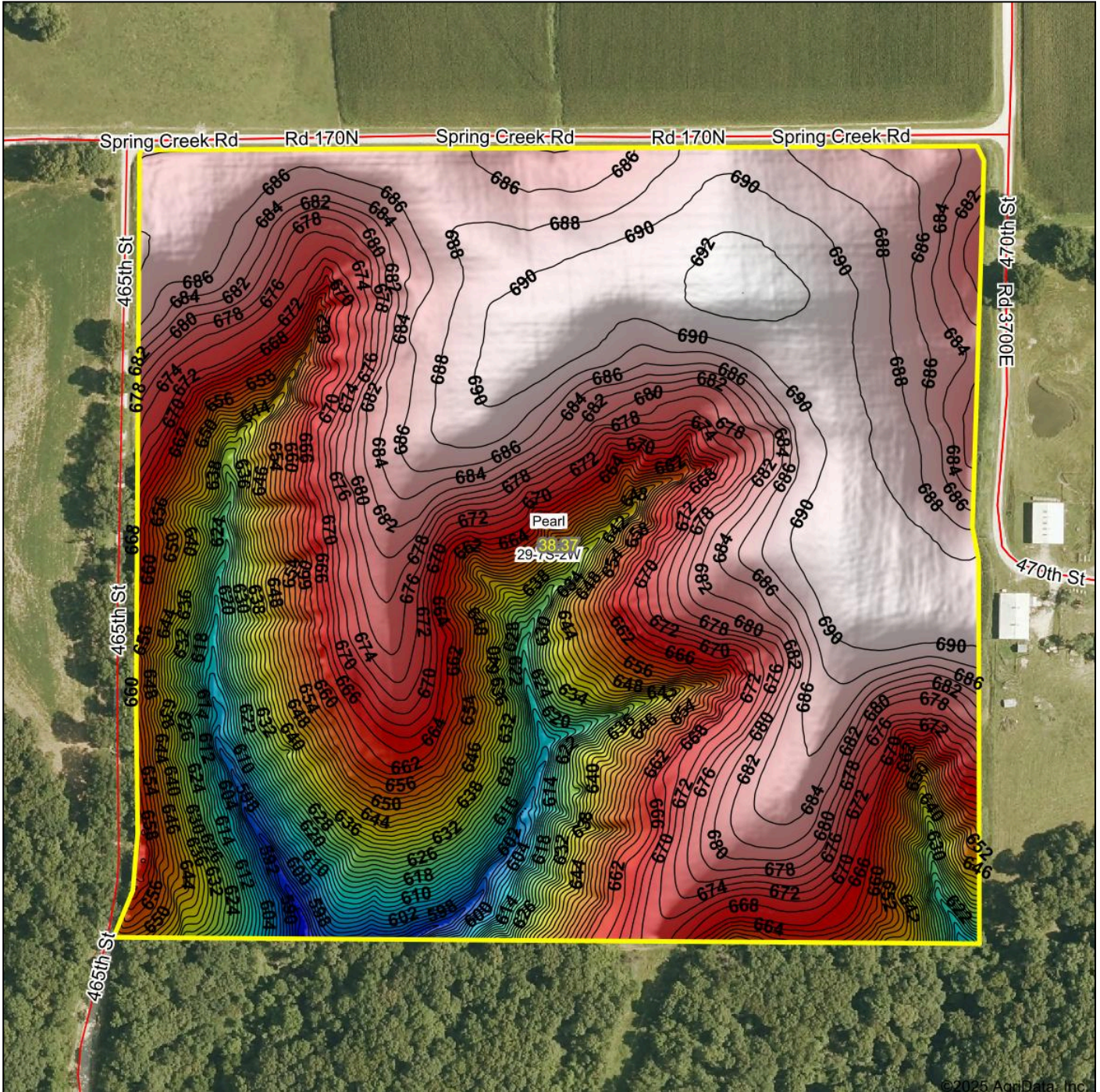
Code	Soil Description	Acres	Percent of field	Il. State Productivity Index Legend	*Corn Bu/A	*Soybeans Bu/A	*Wheat Bu/A	*Oats Bu/A <sup>b</sup>	*Sorghum <sup>c</sup> Bu/A	*Grass-legume <sup>e</sup> hay, T/A	*Crop productivity index for optimum management
**477B	Winfield silt loam, 2 to 5 percent slopes	10.40	45.8%	<span style="color: green;">■</span>	**160	**50	**62	0	**122	**5.00	**118
**79D3	Menfro silty clay loam, 10 to 18 percent slopes, severely eroded	5.97	26.4%	<span style="color: orange;">■</span>	**129	**40	**49	0	**96	**3.90	**94
**79C2	Menfro silt loam, 5 to 10 percent slopes, eroded	4.57	20.2%	<span style="color: cyan;">■</span>	**153	**47	**59	0	**113	**4.60	**112
**472E2	Baylis silt loam, 18 to 25 percent slopes, eroded	1.62	7.2%	<span style="color: yellow;">■</span>	**112	**36	**45	**59	0	**2.40	**82
**606G	Goss gravelly silt loam, 35 to 60 percent slopes	0.08	0.4%	<span style="color: red;">■</span>	**37	**13	**13	**15	0	**1.30	**29
<b>Weighted Average</b>					<b>146.5</b>	<b>45.6</b>	<b>56.6</b>	<b>4.3</b>	<b>104.2</b>	<b>4.4</b>	<b>107.6</b>

**Table: Optimum Crop Productivity Ratings for Illinois Soil EFOTG are sourced from Bulletin 811 calculated Map Unit Base Yield Indices, and adjusted (Adj) for slope, erosion, and surface texture.** Publication Date: 02-08-2023  
 Crop yields and productivity (B811 EFOTG) are maintained at the following USDA web site: 2023 Illinois Soil Productivity and Yield Indices: <https://efotg.sc.egov.usda.gov/#/state/IL/documents/section=2&folder=52809>

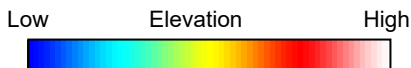
- \* The flood/pond factor has been removed for B811 indexes and yields.
- \*\* Base indexes from Bulletin 811 adjusted for slope, erosion, and surface texture according to the Il. Soils EFOTG
- <sup>b</sup> Soils in the southern region were not rated for oats and are shown with a zero "0".
- <sup>c</sup> Soils in the northern region or in both regions were not rated for grain sorghum and are shown with a zero "0".
- <sup>e</sup> Soils in the well drained group were not rated for grass-legume and are shown with a zero "0".

Soils data provided by USDA and NRCS. Soils data provided by University of Illinois at Champaign-Urbana.

# Topography Hillshade

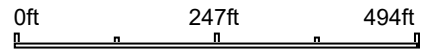


©2025 AgriData, Inc.



FIRST ILLINOIS  
AG GROUP  
Maps Provided By:  
**surety**  
CUSTOMIZED ONLINE MAPPING  
© AgriData, Inc. 2023 www.AgridataInc.com

Source: USGS 1 meter dem  
Interval(ft): 2  
Min: 583.6  
Max: 692.8  
Range: 109.2  
Average: 666.6  
Standard Deviation: 25 ft



1/23/2025

**29-7S-2W**  
**Pike County**  
**Illinois**

Boundary Center: 39° 25' 17.54, -90° 39' 22.53