

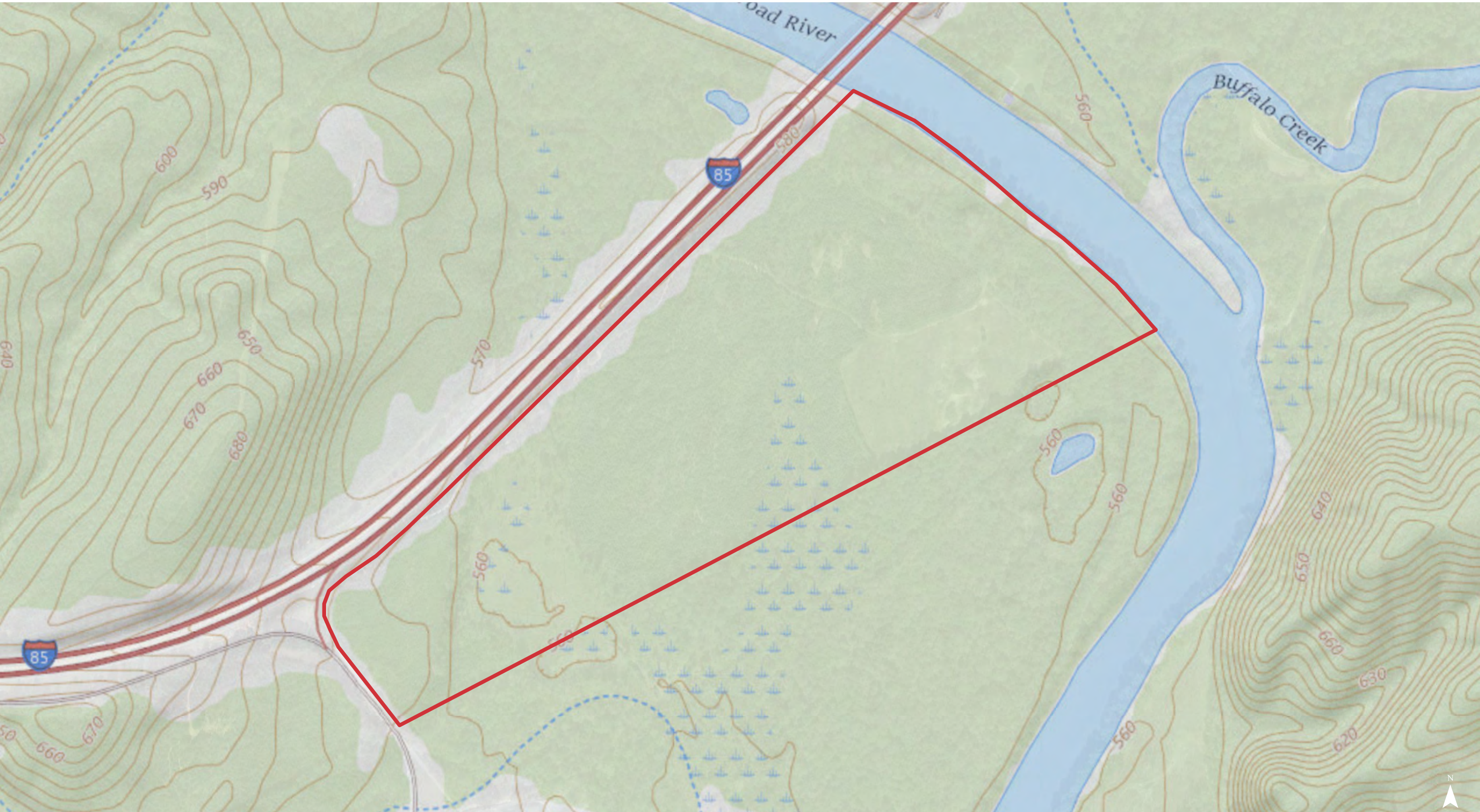
Map Updated: Friday, March 17, 2023. This information submitted is not guaranteed. Although obtained from reliable sources, all information should be confirmed prior to use or reliance upon the information. This document may not be reproduced in whole or in part without the express written consent of NAI Columbia.



Map Updated: Friday, March 17, 2023. This information submitted is not guaranteed. Although obtained from reliable sources, all information should be confirmed prior to use or reliance upon the information. This document may not be reproduced in whole or in part without the express written consent of NAI Columbia.



Map Updated: Friday, March 17, 2023. This information submitted is not guaranteed. Although obtained from reliable sources, all information should be confirmed prior to use or reliance upon the information. This document may not be reproduced in whole or in part without the express written consent of NAI Columbia.



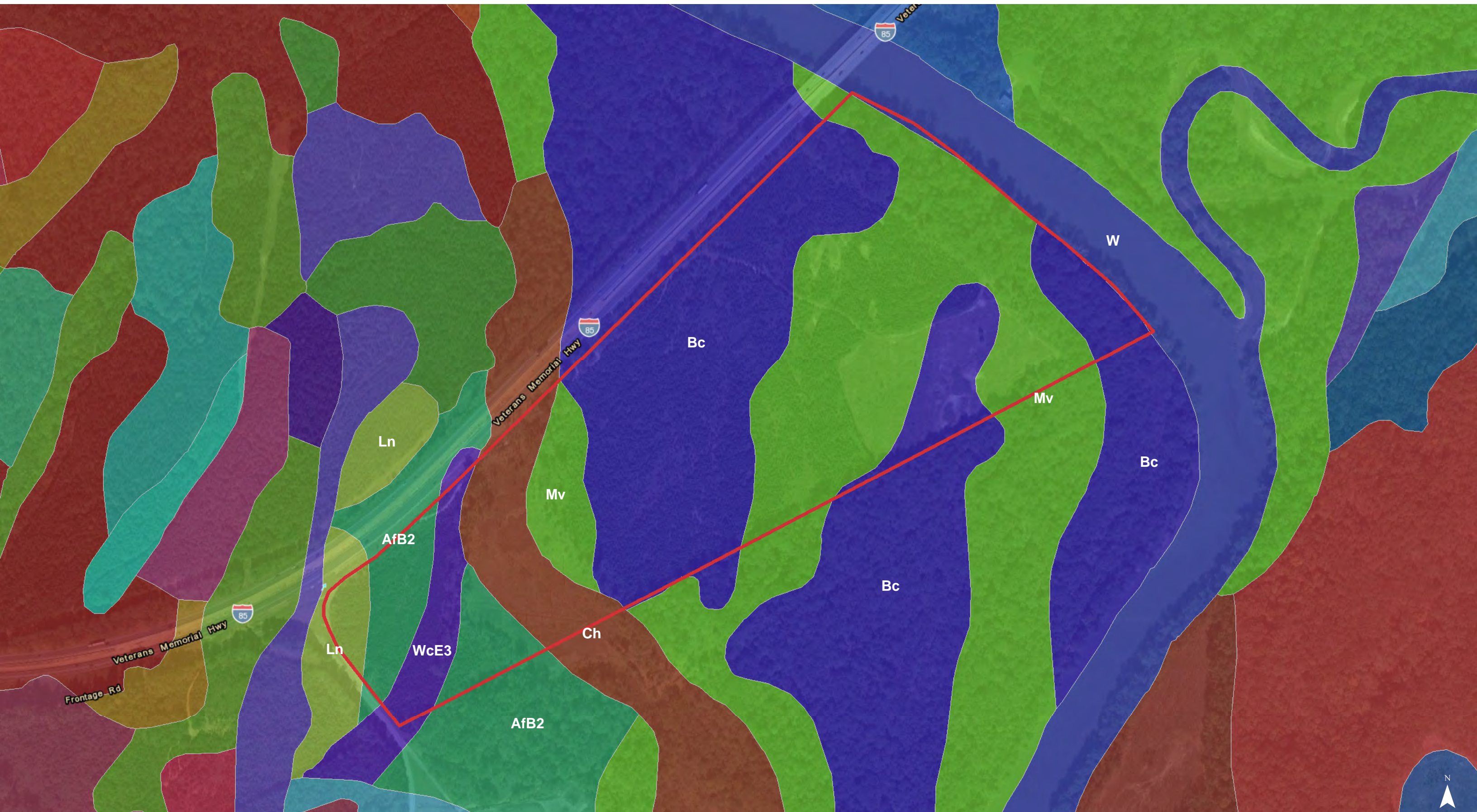
Map Updated: Friday, March 17, 2023. This information submitted is not guaranteed. Although obtained from reliable sources, all information should be confirmed prior to use or reliance upon the information. This document may not be reproduced in whole or in part without the express written consent of NAI Columbia.



National Wetlands Inventory

- Estuarine and Marine Deepwater
- Estuarine and Marine Wetland
- Freshwater Emergent Wetland
- Freshwater Forested/Shrub Wetland
- Freshwater Pond
- Lake
- Riverine

Map Updated: Friday, March 17, 2023. This information submitted is not guaranteed. Although obtained from reliable sources, all information should be confirmed prior to use or reliance upon the information. This document may not be reproduced in whole or in part without the express written consent of NAI Columbia.



Map Updated: Friday, March 17, 2023. This information submitted is not guaranteed. Although obtained from reliable sources, all information should be confirmed prior to use or reliance upon the information. This document may not be reproduced in whole or in part without the express written consent of NAI Columbia.

Map Unit Description (Brief, Generated)

Cherokee County, South Carolina

[Minor map unit components are excluded from this report]

Map unit: AfB2 - Altavista fine sandy loam, 2 to 6 percent slopes, eroded

Component: Altavista (100%)

The Altavista component makes up 100 percent of the map unit. Slopes are 2 to 6 percent. This component is on stream terraces on piedmonts. The parent material consists of loamy alluvium. Depth to a root restrictive layer is greater than 60 inches. The natural drainage class is moderately well drained. Water movement in the most restrictive layer is moderately high. Available water to a depth of 60 inches is high. Shrink-swell potential is low. This soil is rarely flooded. It is not ponded. A seasonal zone of water saturation is at 24 inches during January, February, March, April, December. Organic matter content in the surface horizon is about 1 percent. Nonirrigated land capability classification is 2e. This soil does not meet hydric criteria.

Map unit: Bc - Buncombe loamy sand

Component: Buncombe (100%)

The Buncombe component makes up 100 percent of the map unit. Slopes are 0 to 2 percent. This component is on flood plains on piedmonts. The parent material consists of sandy alluvium. Depth to a root restrictive layer is greater than 60 inches. The natural drainage class is excessively drained. Water movement in the most restrictive layer is high. Available water to a depth of 60 inches is low. Shrink-swell potential is low. This soil is rarely flooded. It is not ponded. There is no zone of water saturation within a depth of 72 inches. Organic matter content in the surface horizon is about 1 percent. Nonirrigated land capability classification is 3s. This soil does not meet hydric criteria.

Map unit: Ch - Chewacla silt loam, 0 to 2 percent slopes, occasionally flooded

Component: Chewacla, occasionally flooded (88%)

The Chewacla, occasionally flooded component makes up 88 percent of the map unit. Slopes are 0 to 2 percent. This component is on flood plains on southern piedmonts. The parent material consists of alluvium. Depth to a root restrictive layer is greater than 60 inches. The natural drainage class is somewhat poorly drained. Water movement in the most restrictive layer is moderately high. Available water to a depth of 60 inches is high. Shrink-swell potential is low. This soil is occasionally flooded. It is not ponded. A seasonal zone of water saturation is at 10 inches during January, February, March, December. Organic matter content in the surface horizon is about 3 percent. Nonirrigated land capability classification is 3w. This soil does not meet hydric criteria.

Map unit: Ln - Local alluvial land

Component: Starr (100%)

The Starr component makes up 100 percent of the map unit. Slopes are 0 to 2 percent. This component is on flood plains on piedmonts. The parent material consists of loamy alluvium. Depth to a root restrictive layer is greater than 60 inches. The natural drainage class is well drained. Water movement in the most restrictive layer is moderately high. Available water to a depth of 60 inches is high. Shrink-swell potential is moderate. This soil is occasionally flooded. It is not ponded. There is no zone of water saturation within a depth of 72 inches. Organic matter content in the surface horizon is about 2 percent. Nonirrigated land capability classification is 2w. This soil does not meet hydric criteria.

Cherokee County, South Carolina

[Minor map unit components are excluded from this report]

Map unit: Mv - Mixed alluvial land

Component: Toccoa (55%)

The Toccoa component makes up 55 percent of the map unit. Slopes are 0 to 2 percent. This component is on flood plains on piedmonts. The parent material consists of loamy alluvium. Depth to a root restrictive layer is greater than 60 inches. The natural drainage class is moderately well drained. Water movement in the most restrictive layer is high. Available water to a depth of 60 inches is moderate. Shrink-swell potential is low. This soil is frequently flooded. It is not ponded. A seasonal zone of water saturation is at 45 inches during January, February, March, April, December. Organic matter content in the surface horizon is about 2 percent. Nonirrigated land capability classification is 3w. This soil does not meet hydric criteria. The calcium carbonate equivalent within 40 inches, typically, does not exceed 8 percent.

Component: Cartecay (40%)

The Cartecay component makes up 40 percent of the map unit. Slopes are 0 to 2 percent. This component is on flood plains on piedmonts. The parent material consists of loamy alluvium. Depth to a root restrictive layer is greater than 60 inches. The natural drainage class is somewhat poorly drained. Water movement in the most restrictive layer is high. Available water to a depth of 60 inches is low. Shrink-swell potential is low. This soil is frequently flooded. It is not ponded. A seasonal zone of water saturation is at 12 inches during January, February, March, April. Organic matter content in the surface horizon is about 2 percent. Nonirrigated land capability classification is 5w. This soil does not meet hydric criteria.

Map unit: W - Water

Component: Water (100%)

Generated brief soil descriptions are created for major soil components. The Water is a miscellaneous area.