



217.11± Acre Recreational Tract with Tillable and Timber for Sale - Vernon County

T R O P H Y
PROPERTIES AND AUCTION
LAND | RECREATIONAL | RESIDENTIAL

www.TrophyPA.com • (855) 573-5263 • leads@trophy.com

PRICE IMPROVED



PROPERTY ADDRESS:
00 S 100th Road
Deerfield, MO 64741

PRICE: \$1,331,279
ACRES: 217.11±
COUNTY: Vernon

PROPERTY HIGHLIGHTS:

- Fully fenced
- 30x40 outbuilding
- Rural Water
- 3 Redneck Blinds on 5' Towers will convey
- 2 2000lb Protein Feeders & 1 1000lb spin feeder will convey
- Established food plots
- Rich deer history

PROPERTY DESCRIPTION:

This exceptional 217.11±-acre property offers a perfect blend of tillable ground, mature timber, and established wildlife habitat. Conveniently located near Ft Scott, it is ideal for hunters as it boasts a rich history of deer and turkey. The property includes established food plots, three Redneck blinds on 5' towers, two 2000lb protein feeders, and one 1000lb spin feeder, all of which will convey. Fully fenced with a pond, rural water, and electric available at the roadway, it also features a 30x40 building perfect for equipment storage or a workshop. Whether you're seeking a hunting retreat or a peaceful escape, this land has everything you need!



PRESENTED BY:

CODY CUTLER
Land Specialist

M: (620) 224-6003
P: (855) 573-5263 x756
E: ccutler@trophy.com

Trophy Properties and Auction
1519 Wall Street
Fort Scott, KS 66701

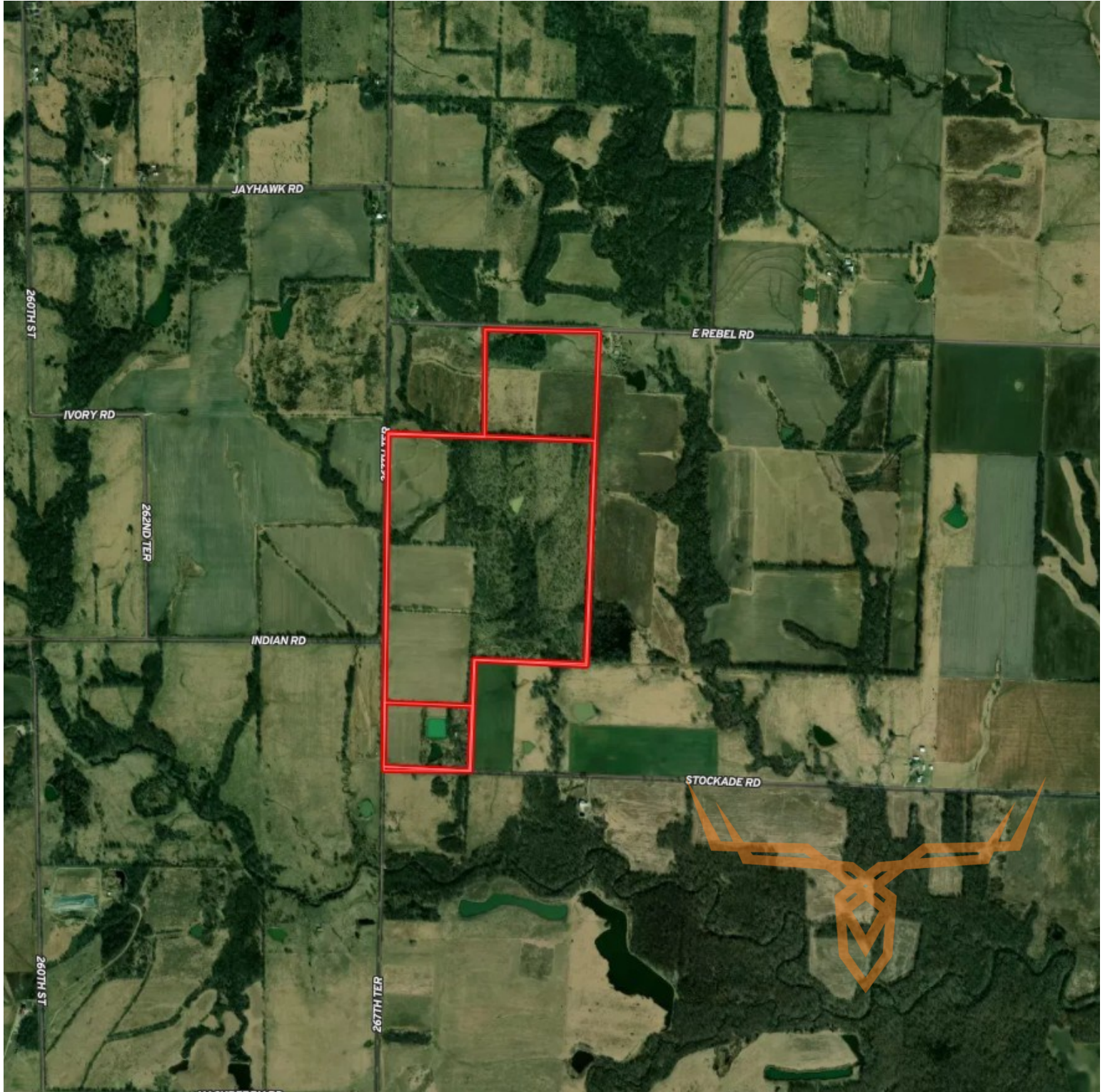
www.TrophyPA.com
leads@trophy.com



TROPHY
PROPERTIES AND AUCTION
LAND | RECREATIONAL | RESIDENTIAL

217.11± Acre Recreational Tract with Tillable and Timber for Sale - Vernon County

www.TrophyPA.com • (855) 573-5263 • leads@trophy.com



Broker does not guarantee the accuracy of sq. ft., lot size, or other information, buyer is advised to independently verify the accuracy of information through personal