

20± ACRES
JASPER COUNTY, MS
\$44,000



SMALLTOWN
HUNTING PROPERTIES
& REAL ESTATESM

OFFICE (769) 760-0005 | WWW.SMALLTOWNPROPERTIES.COM

THE JASPER 20

PROPERTY PROFILE

LOCATION:

- 402 Co Rd 37
Heidelberg, MS 39439
- Jasper County
- 3.1± Miles S of Heidelberg
- 16± Miles NE of Laurel
- 24± Miles SW of Quitman

COORDINATES:

- 31.8485, -88.96696

PROPERTY USE:

- Investment
- Recreational
- Potential Home Site

PROPERTY INFORMATION:

- 20± Acres
- Young Pines
- Road Frontage
- Cemetery
- Powerline

TAX INFORMATION:

- 2023- \$66.47
- Parcel ID- 1461100002900



DENNIS WEST | MANAGING BROKER
C: 601-248-4396 | dennis@smalltownproperties.com



DEWAYNE ATKINSON | LAND SPECIALIST
C: 601-832-3075 | dewayne@smalltownproperties.com

WELCOME TO THE JASPER 20

DISCOVER THE POTENTIAL OF THIS EXCEPTIONAL 20± ACRE PROPERTY IN THE HEART OF JASPER COUNTY, MS. This land boasts young pines, promising a valuable investment for the future. Conveniently accessible with significant road frontage, the property also features a powerline running through it, offering seamless connectivity and numerous development possibilities. A small cemetery is located toward the front of the tract. Whether you're envisioning a retreat or a profitable timberland investment, this versatile parcel is a golden opportunity waiting to be seized.

**Give Dennis West or Dewayne Atkinson
a call to schedule a showing.**



DENNIS WEST | MANAGING BROKER
C: 601-248-4396 | dennis@smalltownproperties.com

DEWAYNE ATKINSON | LAND SPECIALIST
C: 601-832-3075 | dewayne@smalltownproperties.com

2121 5th St., Ste 206 - Meridian, MS 39301 | O: 769-760-0005 | smalltownproperties.com Information is believed to be accurate but not guaranteed.

20± ACRES

JASPER COUNTY, MISSISSIPPI



DENNIS WEST | MANAGING BROKER
C: 601-248-4396 | dennis@smalltownproperties.com

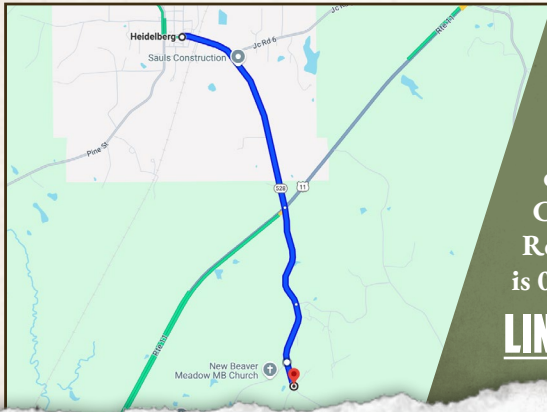
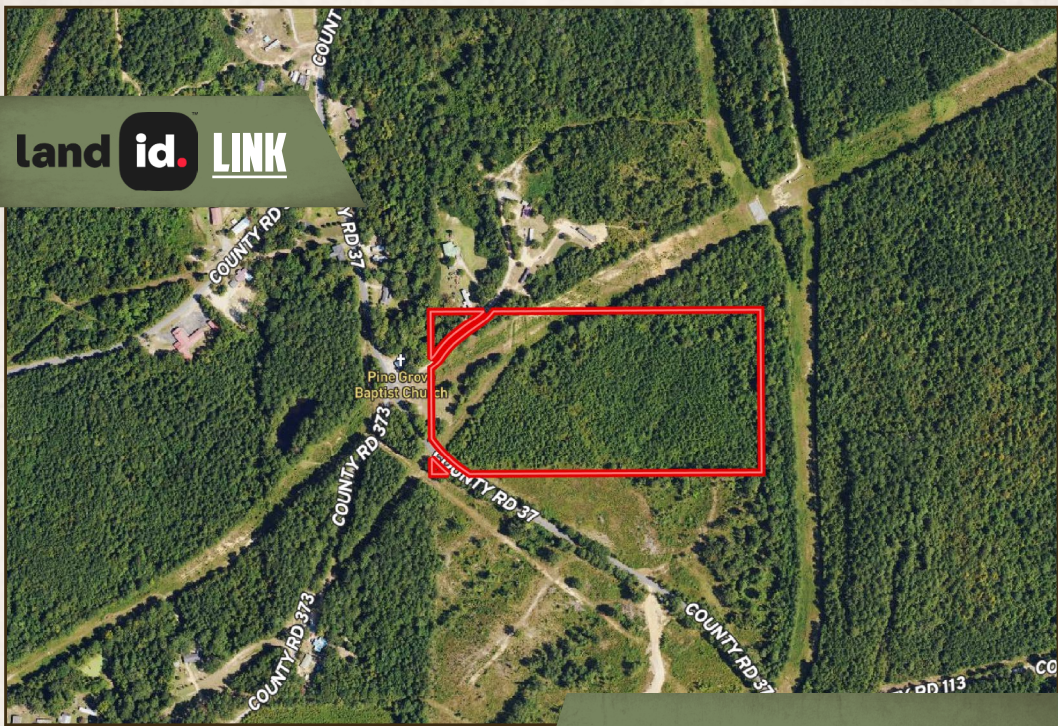
DEWAYNE ATKINSON | LAND SPECIALIST
C: 601-832-3075 | dewayne@smalltownproperties.com

2121 5th St., Ste 206 - Meridian, MS 39301 | O: 769-760-0005 | smalltownproperties.com Information is believed to be accurate but not guaranteed.

20± ACRES

JASPER COUNTY, MISSISSIPPI

land id. LINK



Directions From Heidelberg, MS:
 Travel north on Magnolia Ave toward Main Street and turn right at the 1st cross street onto MS-528 E/Main Street. Proceed 1.6 miles and continue on Co Road 37. Proceed onto Co Rd 372 and then continue onto Co Rd 37. You will arrive at the destination is 0.2 miles.

[LINK TO GOOGLE MAP DIRECTIONS](#)



DENNIS WEST | MANAGING BROKER
 C: 601-248-4396 | dennis@smalltownproperties.com



SMALLTOWN
 HUNTING PROPERTIES
 & REAL ESTATESM



DEWAYNE ATKINSON | LAND SPECIALIST
 C: 601-832-3075 | dewayne@smalltownproperties.com