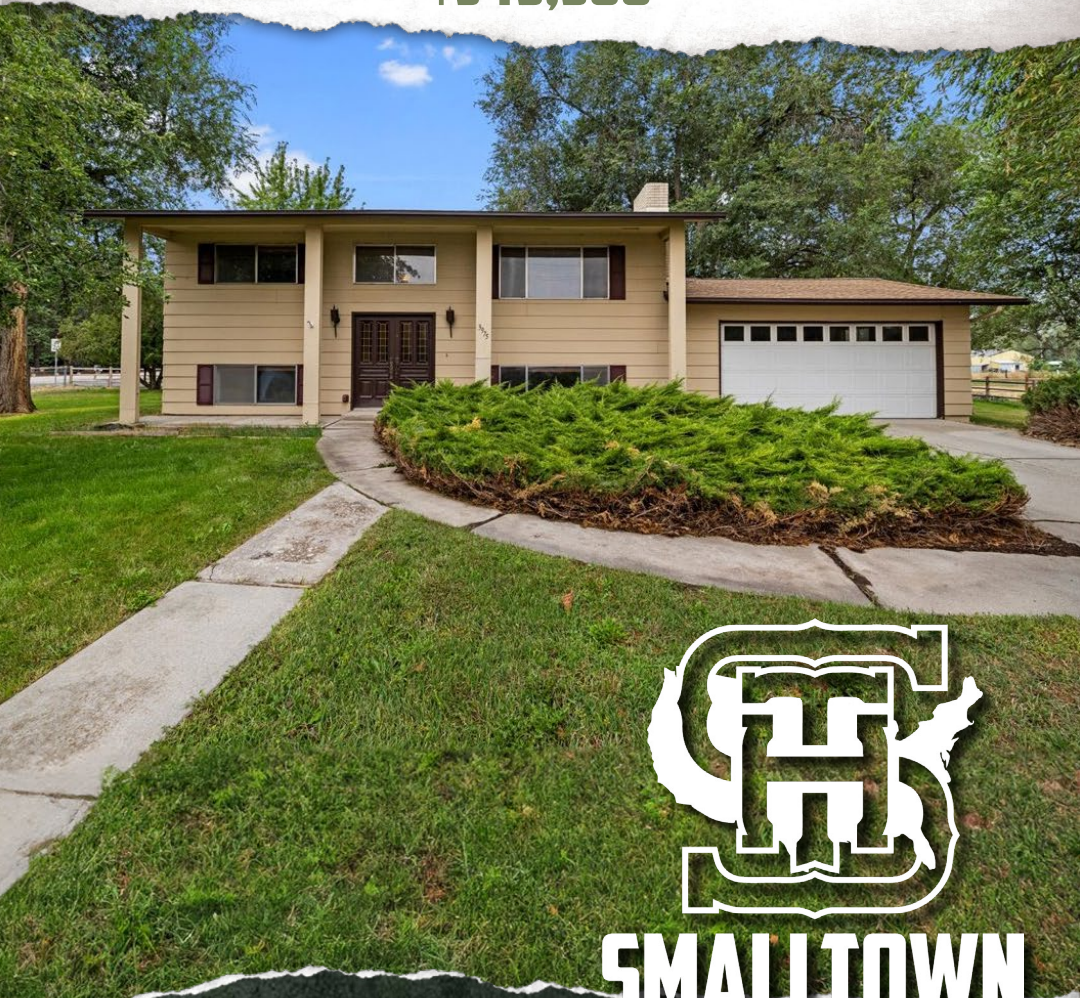


3975 S MAPLE GROVE ROAD
BOISE | ADA COUNTY, ID
\$549,900



SMALLTOWN
HUNTING PROPERTIES
& REAL ESTATESM

OFFICE (208) 505-9998
WWW.SMALLTOWNPROPERTIES.COM

FARM | RANCH

3975 S MAPLE GROVE ROAD

PROPERTY PROFILE

LOCATION:

- 3975 S Maple Grove Road
Boise, Idaho 83709
- Ada County
- 5± Miles to the Boise Airport
- 8.5± Miles to Downtown Boise
- Easy Drive to Interstate 84

COORDINATES:

- 43.567870, -116.294580

PROPERTY USE:

- Residential

PROPERTY INFORMATION:

- 0.78± Acres
- 1,728± SF Home
- 4 Bedrooms/2 Baths
- 2 Living Rooms
- Large Laundry Room
- 2 Car Garage

TAX INFORMATION:

- 2023 - \$2,359.14



OSCAR EVANS, ALC | DESIGNATED BROKER
C: 208-258-0715 | oscar@smalltownproperties.com

CLARA-LEIGH EVANS | REALTOR
C: 225-253-8813 | clara-leigh@smalltownproperties.com

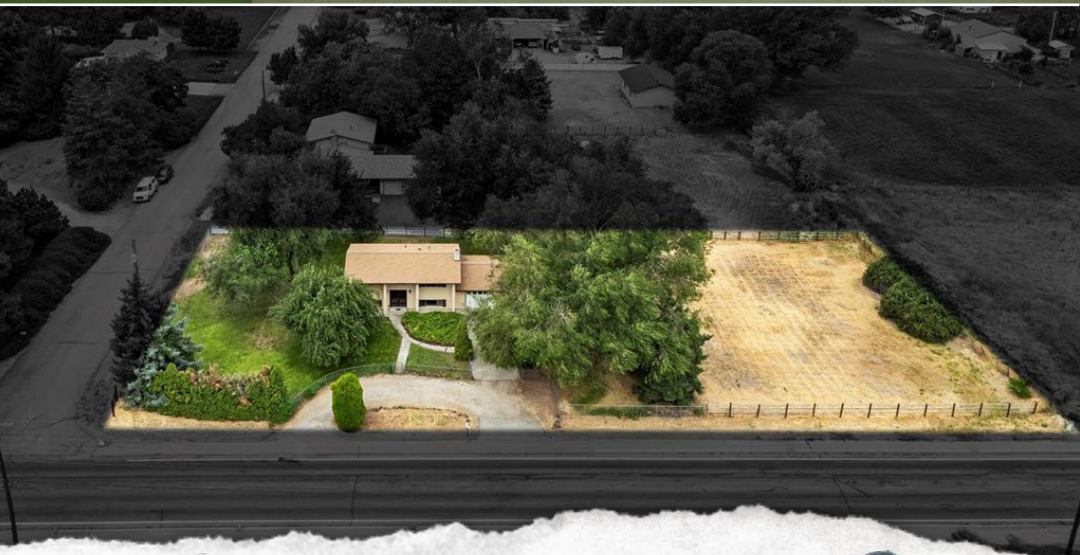
5700 E Franklin Rd, Ste 120 - Nampa, ID 83687 | O: 208-505-9998 | smalltownproperties.com

Information is believed to be accurate but not guaranteed.

WELCOME TO 3975 S MAPLE GROVE ROAD

WELCOME HOME TO 3975 S MAPLE GROVE ROAD. THIS PROPERTY IS IN A CONVENIENT LOCATION WITH A BOASTFUL 0.78± ACRE LOT, AMPLE ROOM FOR ACTIVITIES AND PLANS TO MEET YOUR VISION! The charming, traditional Ada County home offers 1,728± square feet featuring four bedrooms, two baths, two living rooms, a large laundry room with a deep sink and space for storage, and a kitchen with a separate eating area. Additionally, a two car garage is available for vehicles or storage. With a newer roof and recent updates, the home is move-in-ready so you can begin living the life you love or continue to bring the home along using your own creativity. The property features mature trees and the spacious lot allows for expansion of your ideas or your business with road frontage for great visibility and convenience. Gardening and outdoor entertaining in the vacant space is another option. With downtown Boise being less than nine miles away, shopping, dining and office space are near.

Contact Oscar or Clara-Leigh Evans today to schedule a private showing and make 3975 S Maple Grove Road your new address!



OSCAR EVANS, ALC | DESIGNATED BROKER
C: 208-258-0715 | oscar@smalltownproperties.com

CLARA-LEIGH EVANS | REALTOR
C: 225-253-8813 | clara-leigh@smalltownproperties.com

5700 E Franklin Rd, Ste 120 - Nampa, ID 83687 | O: 208-505-9998 | smalltownproperties.com

Information is believed to be accurate but not guaranteed.



OSCAR EVANS, ALC | DESIGNATED BROKER
C: 208-258-0715 | oscar@smalltownproperties.com

CLARA-LEIGH EVANS | REALTOR
C: 225-253-8813 | clara-leigh@smalltownproperties.com

5700 E Franklin Rd, Ste 120 - Nampa, ID 83687 | O: 208-505-9998 | smalltownproperties.com

Information is believed to be accurate but not guaranteed.



OSCAR EVANS, ALC | DESIGNATED BROKER
C: 208-258-0715 | oscar@smalltownproperties.com

CLARA-LEIGH EVANS | REALTOR
C: 225-253-8813 | clara-leigh@smalltownproperties.com

5700 E Franklin Rd, Ste 120 - Nampa, ID 83687 | O: 208-505-9998 | smalltownproperties.com

Information is believed to be accurate but not guaranteed.



OSCAR EVANS, ALC | DESIGNATED BROKER
C: 208-258-0715 | oscar@smalltownproperties.com

CLARA-LEIGH EVANS | REALTOR
C: 225-253-8813 | clara-leigh@smalltownproperties.com

5700 E Franklin Rd, Ste 120 - Nampa, ID 83687 | O: 208-505-9998 | smalltownproperties.com

Information is believed to be accurate but not guaranteed.



SMALLTOWN
HUNTING PROPERTIES
& REAL ESTATE™
FARM | RANCH

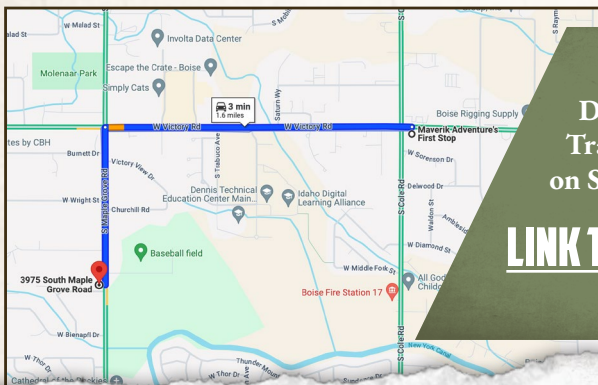
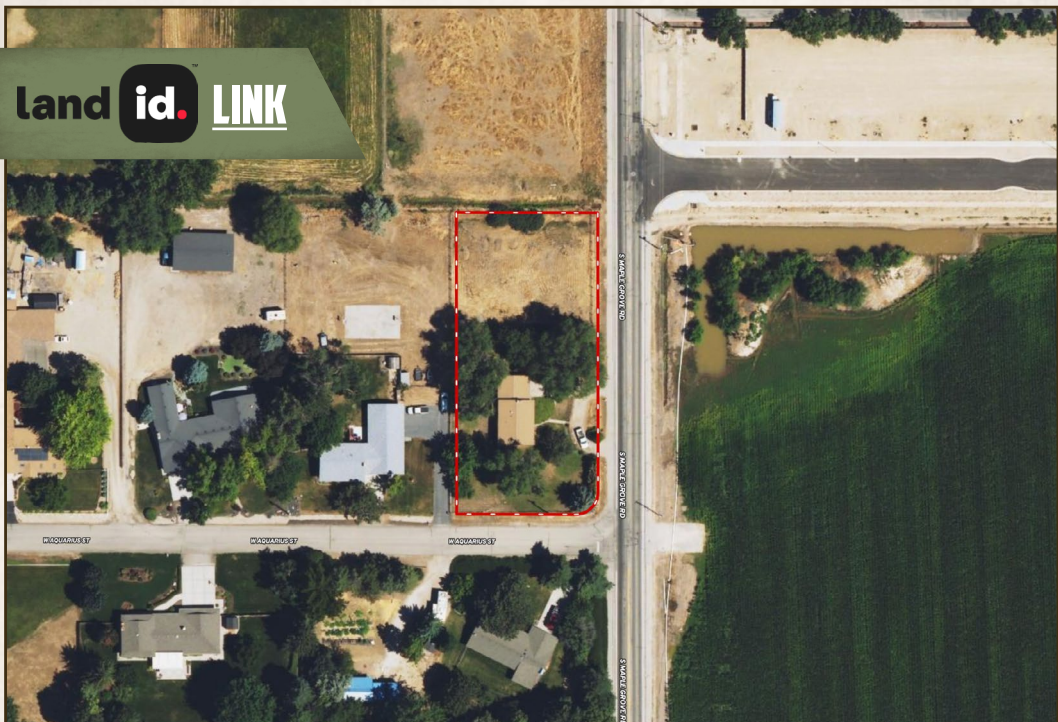
OSCAR EVANS, ALC | DESIGNATED BROKER
C: 208-258-0715 | oscar@smalltownproperties.com

CLARA-LEIGH EVANS | REALTOR
C: 225-253-8813 | clara-leigh@smalltownproperties.com

5700 E Franklin Rd, Ste 120 - Nampa, ID 83687 | O: 208-505-9998 | smalltownproperties.com

Information is believed to be accurate but not guaranteed.

land id. LINK



Directions From I-84 and Cole Road:
Travel west on Victory and then south
on S Maple Grove Road.

[LINK TO GOOGLE MAP DIRECTIONS](#)



OSCAR EVANS, ALC | DESIGNATED BROKER
C: 225-258-0715 | oscar@smalltownproperties.com

CLARA-LEIGH EVANS | REALTOR
C: 225-253-8813 | clara-leigh@smalltownproperties.com

5700 E Franklin Rd, Ste 120 - Nampa, ID 83687 | O: 208-505-9998 | smalltownproperties.com

Information is believed to be accurate but not guaranteed.