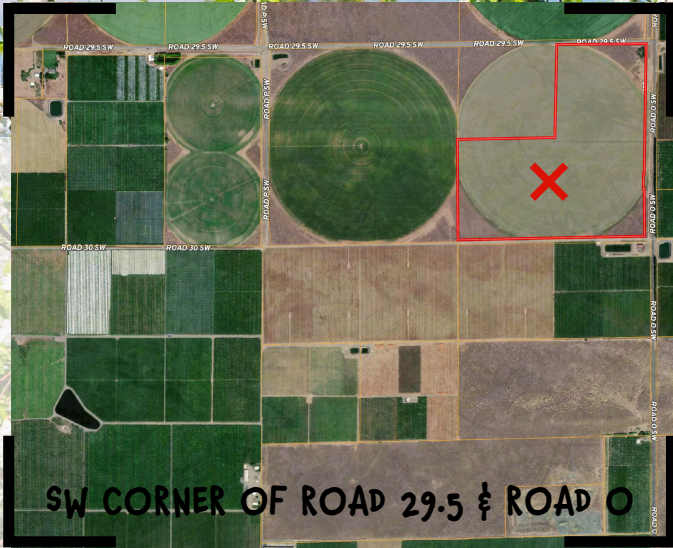




**Road O SW,
Mattawa, WA 99349
FU 81 BLK 26
Parcel# 191686001**

\$2,035,000



SW CORNER OF ROAD 29.5 & ROAD O

This exceptional 115+ acre farm in the heart of the Wahluke Viticulture Area offers incredible potential. Fully equipped with an 8-tower Valley center pivot, it ensures efficient irrigation! The land features a supreme soil profile with loamy fine sand, a 0-15% slope, and deep, well-drained soil ideal for high-yield crops. A 50 hp pump provides reliable water from the canal-based Bureau system. Surrounded by flourishing orchards and vineyards, this farm is perfectly situated for growth in one of Washington's most prestigious agricultural regions. Don't miss this opportunity! 110 Irrigable Acres
nwmls#2324313



**Anna
Van Diest**
Broker

✉ basinagsales@gmail.com
☎ 509-989-7687
📍 302 West Broadway Ave
Moses Lake, WA 98837