



# 600 ACRE MARION COUNTY FARM

Southwest 10th St, Dunnellon, FL 34431

David Lapham

517.990.4907

[davidl@saundersrealestate.com](mailto:davidl@saundersrealestate.com)



## PROPERTY OVERVIEW



**Sale Price**                      **\$10,836,000**

### OFFERING SUMMARY

<b>Acreage:</b>	<b>601± Acres</b>
<b>Price / Acre:</b>	\$18,017
<b>City:</b>	Dunnellon
<b>County:</b>	Marion
<b>Property Type:</b>	Equestrian, Farms & Nurseries Properties, Sod, Vegetables

### PROPERTY OVERVIEW

This 600-acre property, zoned A1, offers a rare investment opportunity in the heart of Marion County's agricultural hub. Featuring gently rolling hills and well-drained Candler sand soils, the land is perfectly suited for diverse agricultural pursuits, including hay production, livestock grazing, and peanut cultivation. With established Bahia grass pastures, this property provides immediate utility for grazing operations. The expansive acreage and flexible A1 zoning also make it ideal for recreational use, equestrian development, or a private estate. Equipped with linears for irrigation potential and ample space for future improvements, this property is ready to meet the needs of visionary investors seeking versatility, productivity, and long-term value.

## SPECIFICATIONS & FEATURES



## SPECIFICATIONS & FEATURES

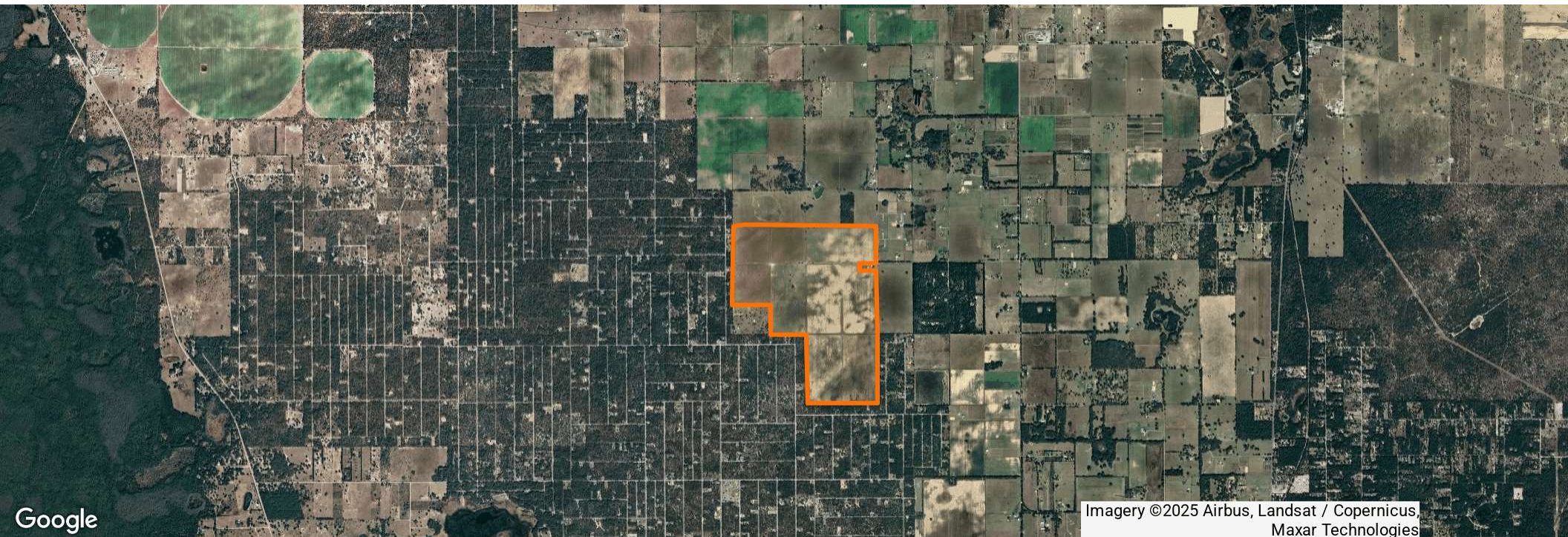
<b>Land Types:</b>	<ul style="list-style-type: none"><li>• Equestrian</li><li>• Farms &amp; Nurseries Properties</li><li>• Sod</li><li>• Vegetables</li></ul>
<b>Uplands / Wetlands:</b>	601± Acres of Uplands / 0.17 Acres of Wetlands
<b>Taxes &amp; Tax Year:</b>	17326-000-00 - \$996.33 (2024) 17324-001-00 - \$705.48 (2024) 17323-000-00 - \$788.15 (2024) 17323-001-00 - \$1,037.78 (2024)
<b>Zoning / FLU:</b>	General Agriculture (A-1)
<b>Fencing:</b>	Surrounds the property
<b>Current Use:</b>	Farm
<b>Grass Types:</b>	Some Bahia
<b>Wells Information:</b>	There are two [2] large wells powered by propane and diesel
<b>Irrigation:</b>	6 linears

## LOCATION



## LOCATION & DRIVING DIRECTIONS

<b>Parcel:</b>	17323-000-00 17326-000-00 17323-001-00 17324-001-00
<b>GPS:</b>	29.1768454, -82.4898582
<b>Driving Directions:</b>	Contact David Lapham
<b>Showing Instructions:</b>	Contact David Lapham



Google

Imagery ©2025 Airbus, Landsat / Copernicus, Maxar Technologies

# REGIONAL MAP

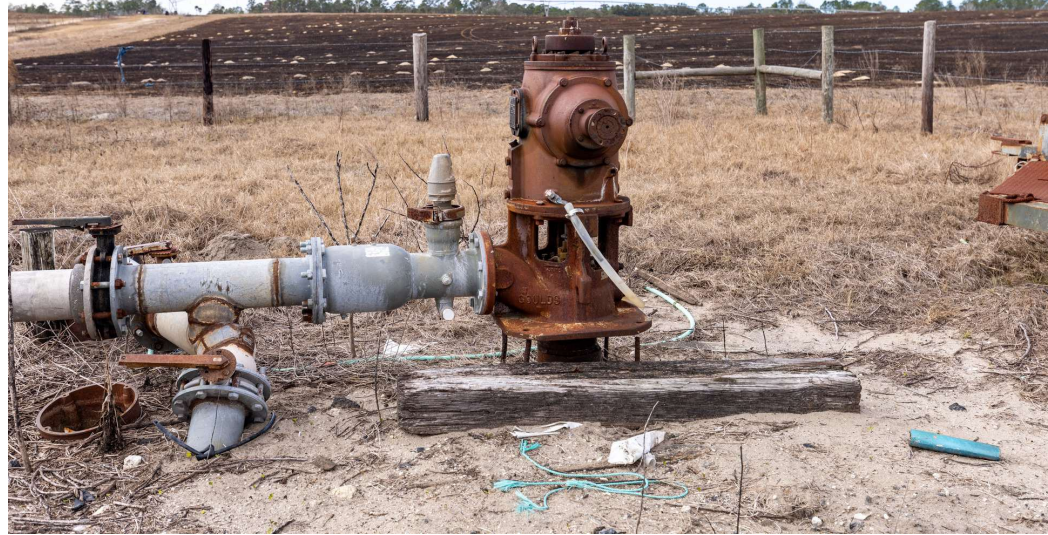


Map data ©2025 Google Imagery  
©2025 TerraMetrics

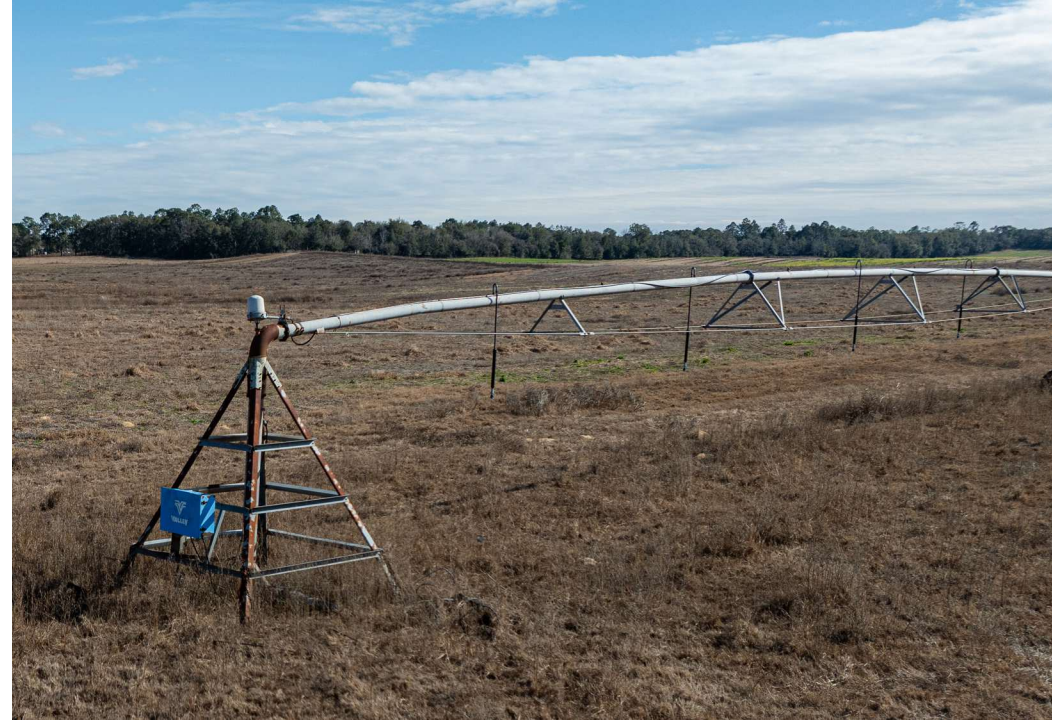
ADDITIONAL PHOTOS



# WELLS AND TANKS



# CENTER PIVOTS





ADDITIONAL PHOTOS



## ADVISOR BIOGRAPHY



### DAVID LAPHAM

Associate Advisor

davidl@saundersrealestate.com

Direct: 877.518.5263 x491 | Cell: 517.990.4907

## PROFESSIONAL BACKGROUND

David Lapham is an Associate Advisor at Saunders Real Estate.

With a focus on Florida's sod industry, David brings a fresh and innovative approach to the profession. Originally from Michigan, David relocated to Florida in 2008 and began an impactful journey in land management and technology. At the age of 17, David enlisted in the Army, an experience that has profoundly shaped his work ethic and leadership style. The military instilled in him a strong sense of discipline and adaptability, traits he later applied to his academic and professional pursuits.

David's educational journey led him to Southeastern University, where he earned a degree in Communications. This education, combined with his military experience, has been instrumental in developing his exceptional communication skills, which are essential for relationship-building within the real estate industry.

However, David truly shines at the intersection of technology and agriculture. With a background in software engineering, he has been able to effectively apply technological solutions within the sod industry. Through these advancements, David streamlined operations and brought a new level of efficiency and insight into sod management practices.

Saunders Real Estate  
1723 Bartow Road  
Lakeland, FL 33801  
863.648.1528



For more information visit [www.saundersrealestate.com](http://www.saundersrealestate.com)

### HEADQUARTERS

1723 Bartow Road  
Lakeland, FL 33801  
863.648.1528

### ORLANDO

605 E Robinson Street  
Suite 410  
Orlando, FL 32801  
407.516.4300

### NORTH FLORIDA

356 NW Lake City Avenue  
Lake City, FL 32055  
352.364.0070

### GEORGIA

203 E Monroe Street  
Thomasville, GA 31792  
229.299.8600

### ARKANSAS

112 W Center St, Suite 501  
Fayetteville, AR 72701  
479.582.4113

