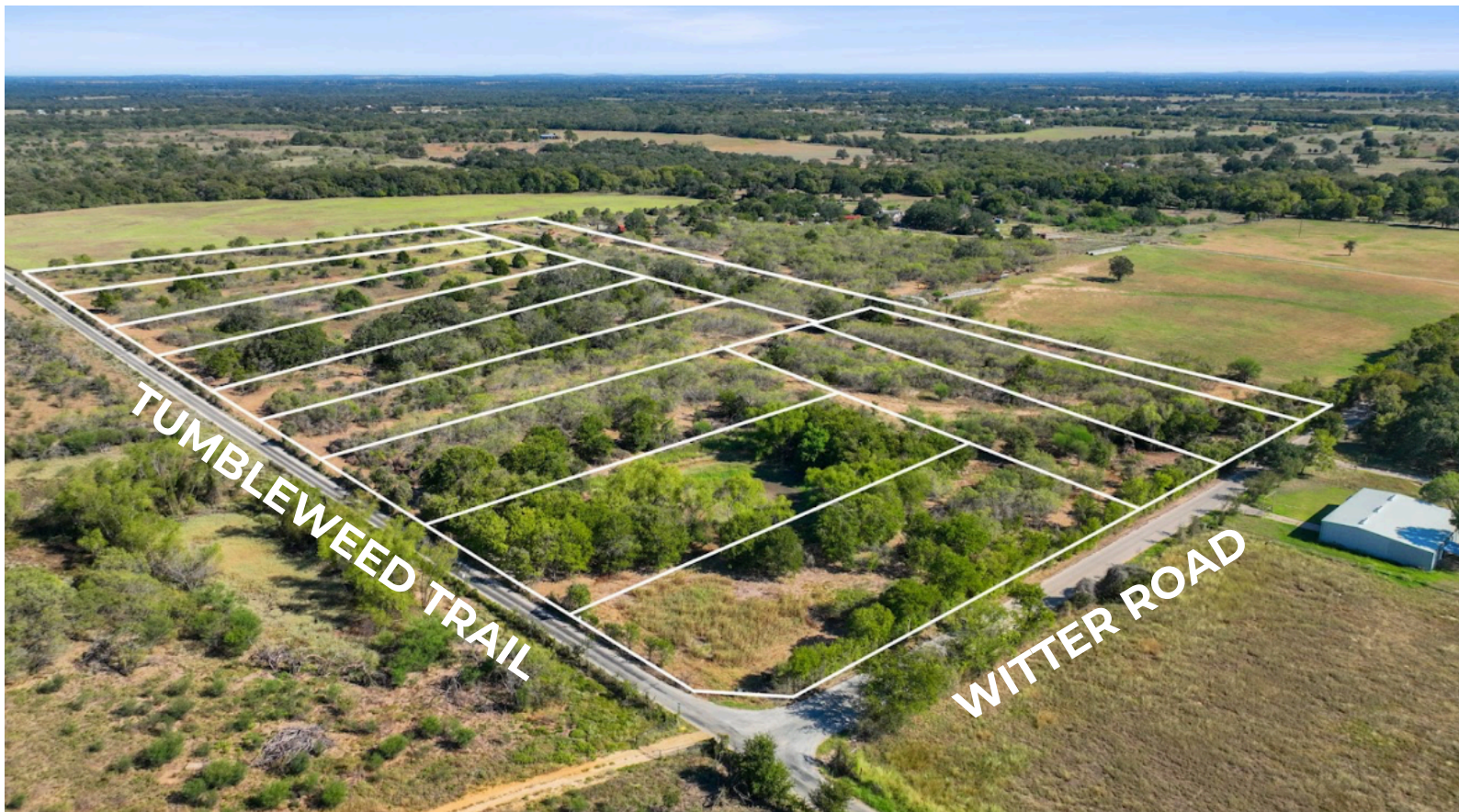


TUMBLEWEED RANCH



12 RESIDENTIAL LOTS FOR SALE

LOT SIZES FROM 1.4 ACRES TO 3.8 ACRES

OWNER FINANCING TERMS

- MIN 7.5% DOWN PAYMENT
- AVG 11.75% APR
- 30 YEARS OR LESS

PROPERTY LOCATION

- CALDWELL COUNTY
- 10 MINUTES TO LOCKHART
- 30 MINUTES TO AUSTIN

COUNTRY LIVING WITH NO HOA



LOT FEATURES

- Mature Oak Trees
- Shared Pond
- No Flood Plain
- Paved Roads

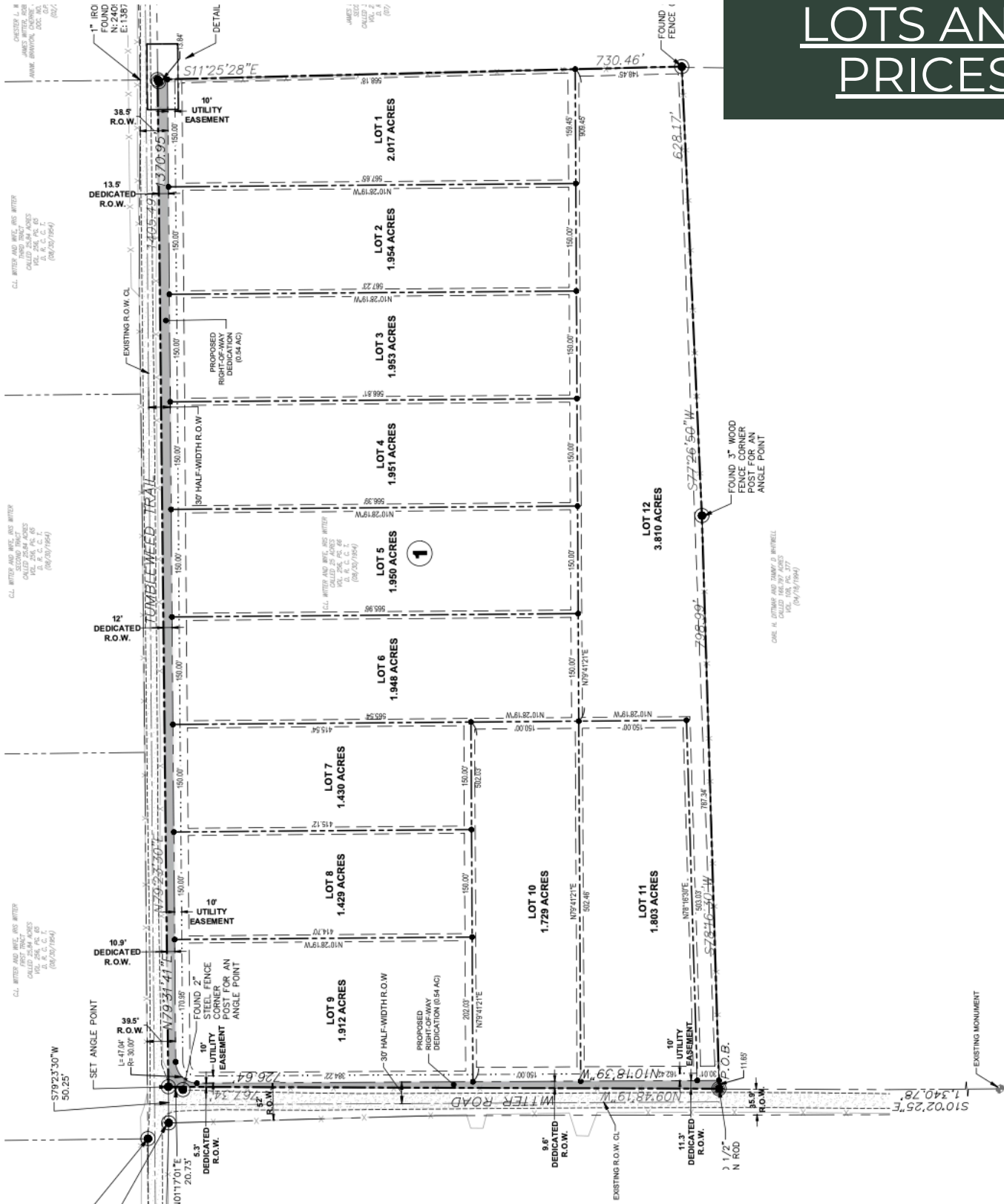
ABOUT THE NEIGHBORHOOD

Tumbleweed Ranch is a small relaxed neighborhood allowing for flexible property uses. Each lot has beautiful trees for added privacy and level ground for building. Restrictions allow single and double wide mobile homes, RV, tiny homes, barndominiums, and site built homes. Utilities on site include a shared water well with a connection fee of \$3,500 at closing. Buyer responsible for installing septic system and electricity with Bluebonnet Electric Co-Op.



PLAT MAP

[CLICK HERE FOR LIST OF AVAILABLE LOTS AND PRICES](#)



**** 2.5 % COMPENSATION OFFERED TO BUYER'S AGENT**



PREVIEW THE LAND TODAY



TAKE A VIRTUAL TOUR

Land  UNLIMITED



KAYLEE SUTTON
FOUNDER & REALTOR
KAYLEE@LANDUNLIMITEDRE.COM
C: (512) 470-4237
O: (512) 729-7139

WWW.LANDUNLIMITEDRE.COM