

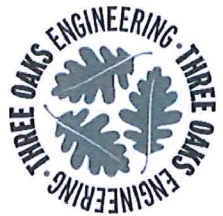
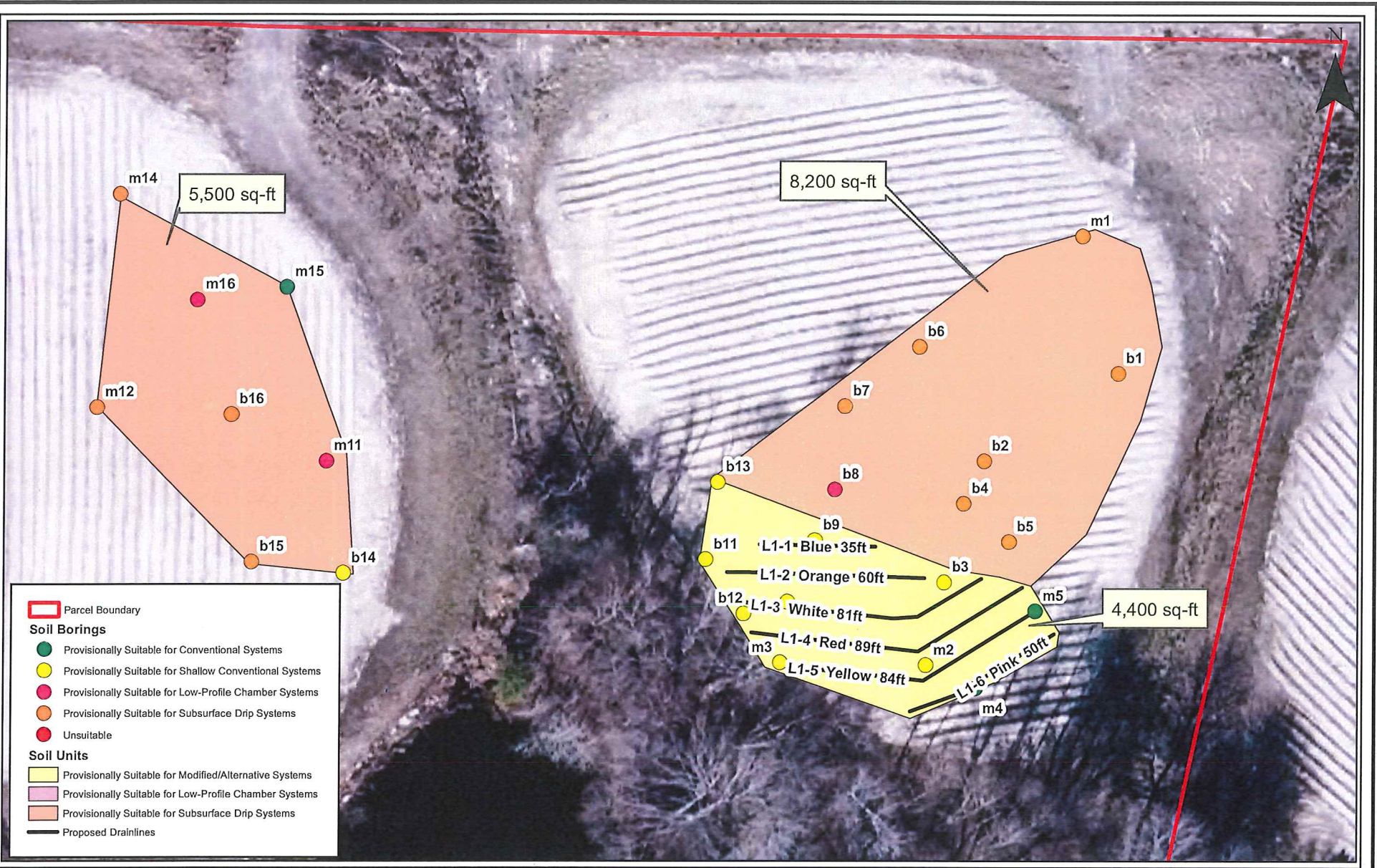
Septic System Layout

Bennett Road

Granville County, North Carolina

Date:	September 2020
Scale:	0 130 260 Feet
Job No.:	20-790
Drawn By:	ETM
Checked By:	MGW

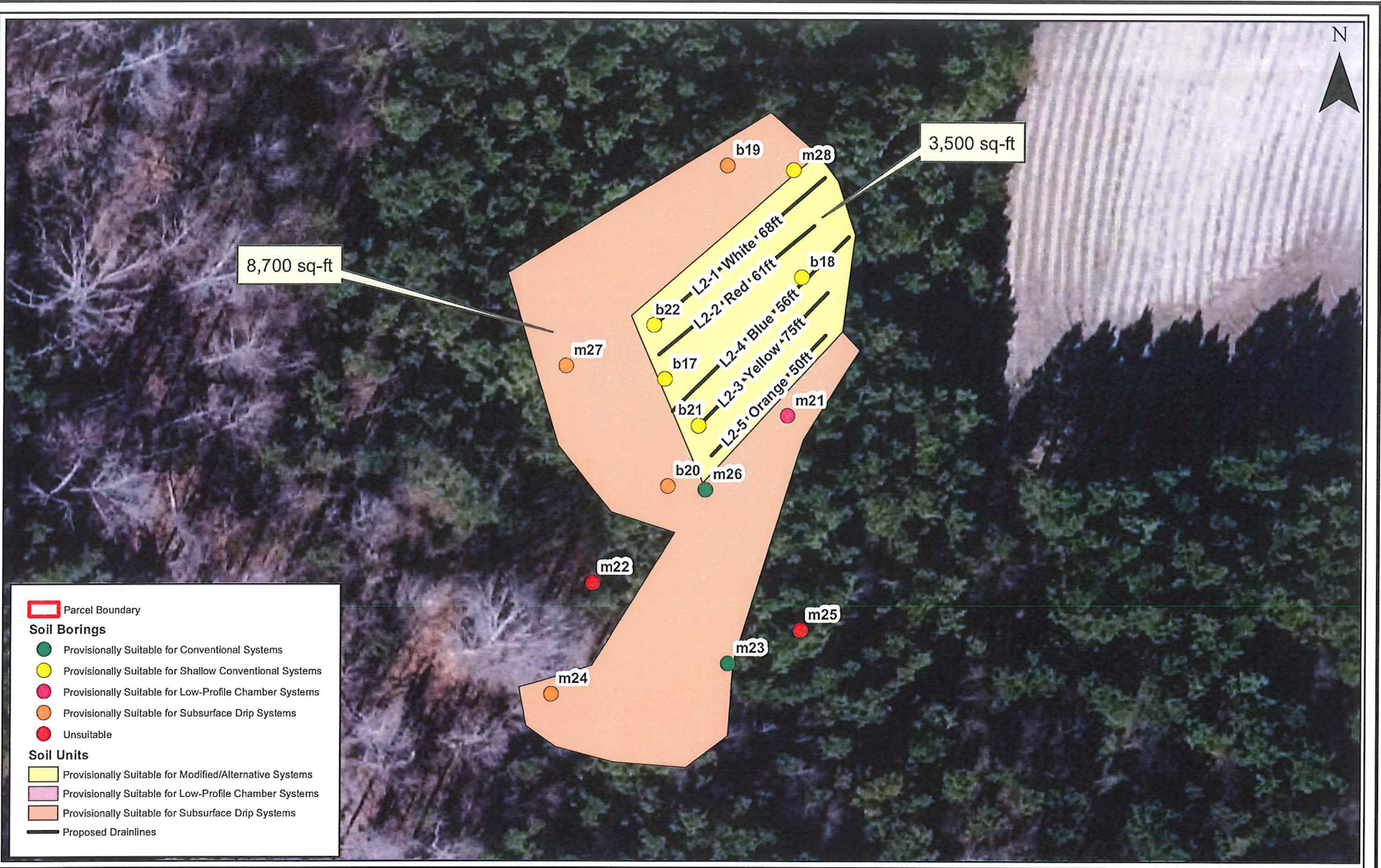
Figure
1



Septic System Layout
 Bennett Road
 Layout 1
 Granville County, North Carolina

Date: September 2020
 Scale: 0 10 20 Feet
 Job No.: 20-790
 Drawn By: ETM
 Checked By: MGW

Figure
2



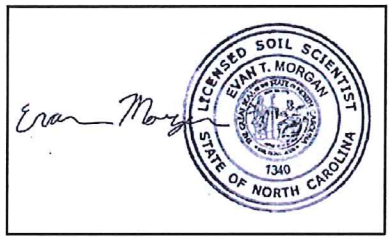
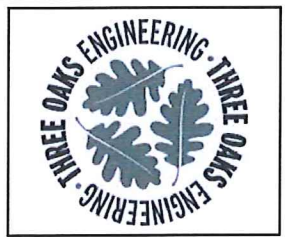
Parcel Boundary

Soil Borings

- Provisionally Suitable for Conventional Systems
- Provisionally Suitable for Shallow Conventional Systems
- Provisionally Suitable for Low-Profile Chamber Systems
- Provisionally Suitable for Subsurface Drip Systems
- Unsuitable

Soil Units

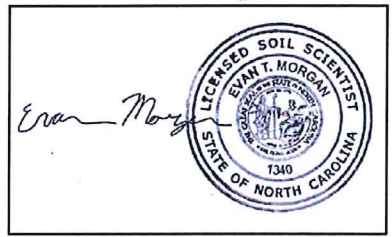
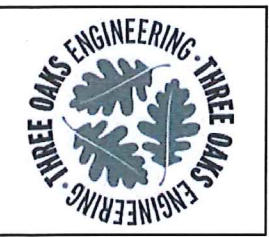
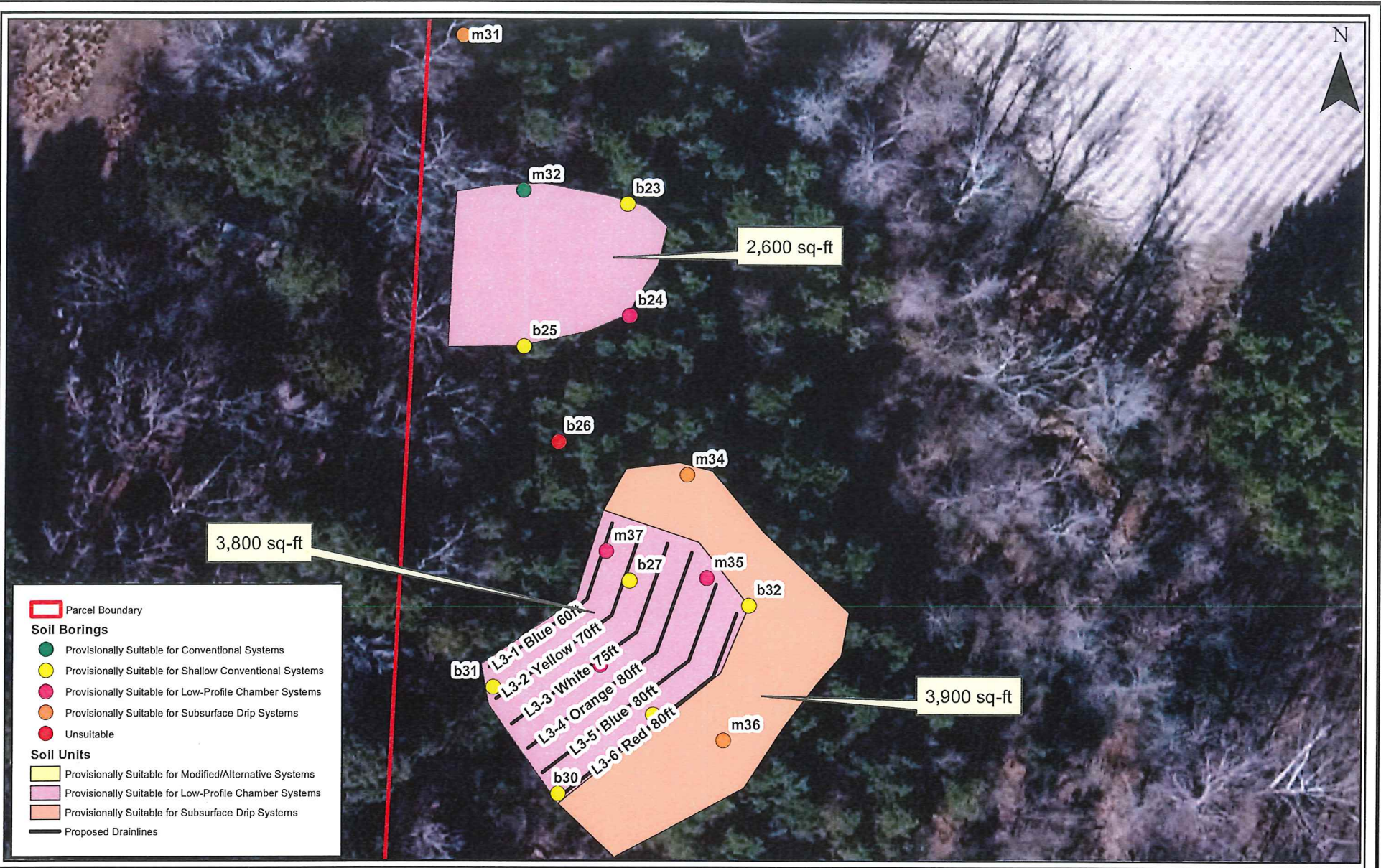
- Provisionally Suitable for Modified/Alternative Systems
- Provisionally Suitable for Low-Profile Chamber Systems
- Provisionally Suitable for Subsurface Drip Systems
- Proposed Drainlines



Septic System Layout
 Bennett Road
 Layout 2
 Granville County, North Carolina

Date:	September 2020
Scale:	0 10 20 Feet
Job No.:	20-790
Drawn By:	ETM
Checked By:	MGW

Figure
3



Septic System Layout
 Bennett Road
 Layout 3
 Granville County, North Carolina

Date:	September 2020
Scale:	0 10 20 Feet
Job No.:	20-790
Drawn By:	ETM
Checked By:	MGW

Figure
4