



Lone Mesa

TBD Gandy Rd # 3900, Gatesville, TX
13 Acres | \$220,000



Copyright 2025 Grand Land Realty, LLC
The material contained in this document is based in part upon information furnished to Grand Land Realty, LLC. by sources deemed to be reliable. The information is believed to be accurate in all material respects, but no representation or warranty, expressed, or implied, as to list accuracy or completeness is made by any party. Recipients should conduct their own investigation and analysis of the information described herein.



Dustin Preston

Realtor®- Land Specialist

dpreston@grandland.com

(281) 787-5401

Property Description

Lone Mesa is 13 acres of prime hill country land situated approximately 20 miles north of Lampasas, TX. This gated community offers the luxury of country living while being close to several metropolitan cities. The land offers more than 100' elevation change, providing views as far as the eye can see and multiple spots atop the hill to build your forever home. You'll find numerous Oak species, native grasses, and shrubs that are common to this area. Come build your forever home or recreational getaway!

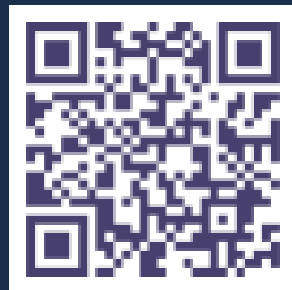
Copyright 2025 Grand Land Realty, LLC
The material contained in this document is based in part upon information furnished to Grand Land Realty, LLC. by sources deemed to be reliable. The information is believed to be accurate in all material respects, but no representation or warranty, expressed, or implied, as to list accuracy or completeness is made by any party. Recipients should conduct their own investigation and analysis of the information described herein.



Dustin Preston

Realtor®- Land Specialist
dpreston@grandland.com

(281) 787-5401



SCAN HERE TO SEE MORE OF
LONE MESA

Location

Lampasas County

20 miles to Lampasas, 69 miles to Waco, 95 miles to Austin.

Directions

From Lampasas, travel north approximately 12 miles to FM 1690, turn right, and travel east for approximately 11 miles until you reach Blakely Rd. Turn left and travel 2 miles to the gated entrance of Lone Mesa on your left.

Copyright 2025 Grand Land Realty, LLC
The material contained in this document is based in part upon information furnished to Grand Land Realty, LLC. by sources deemed to be reliable. The information is believed to be accurate in all material respects, but no representation or warranty, expressed, or implied, as to list accuracy or completeness is made by any party. Recipients should conduct their own investigation and analysis of the information described herein.



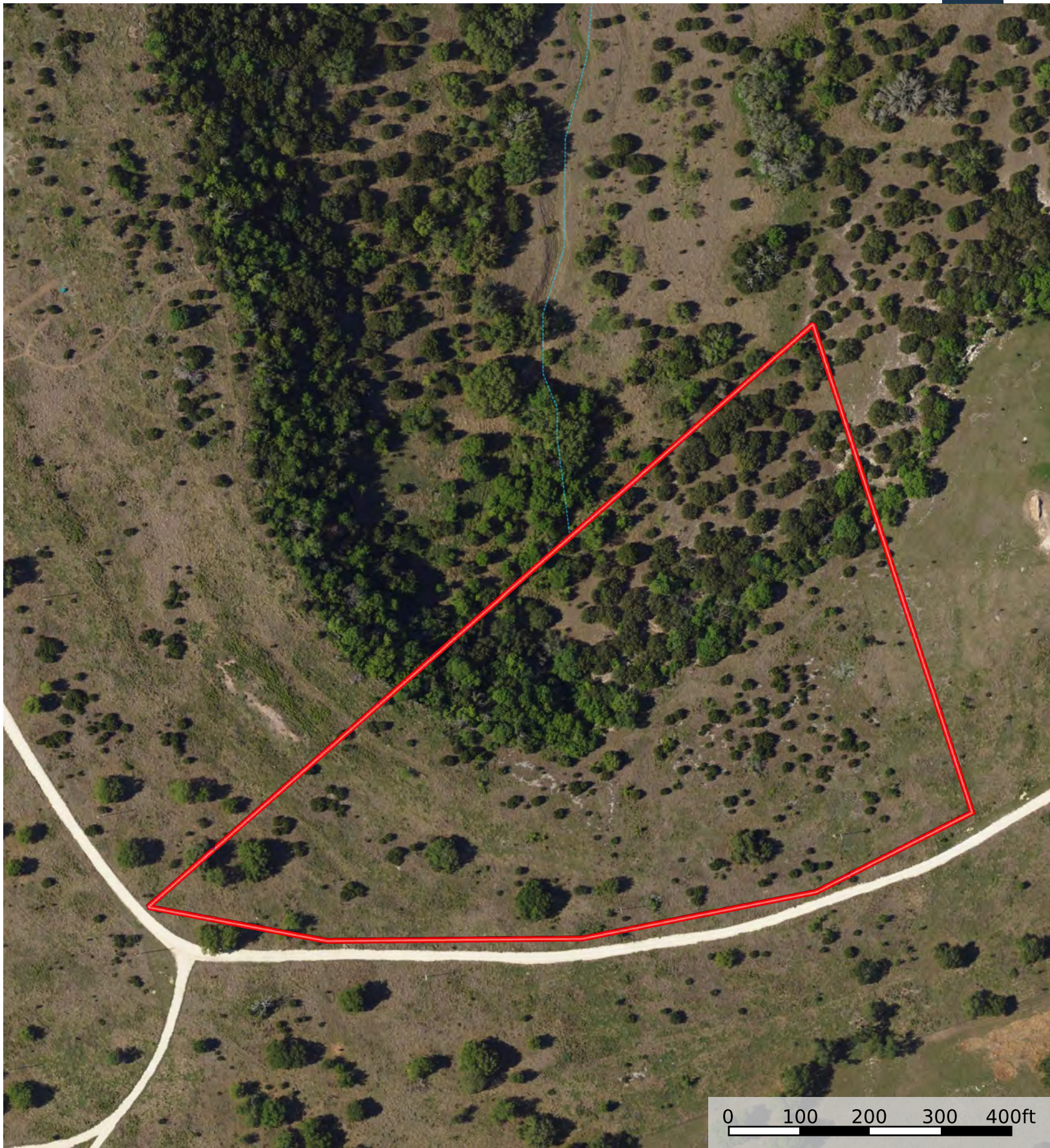
Dustin Preston

Realtor®- Land Specialist

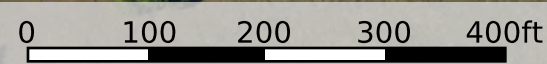
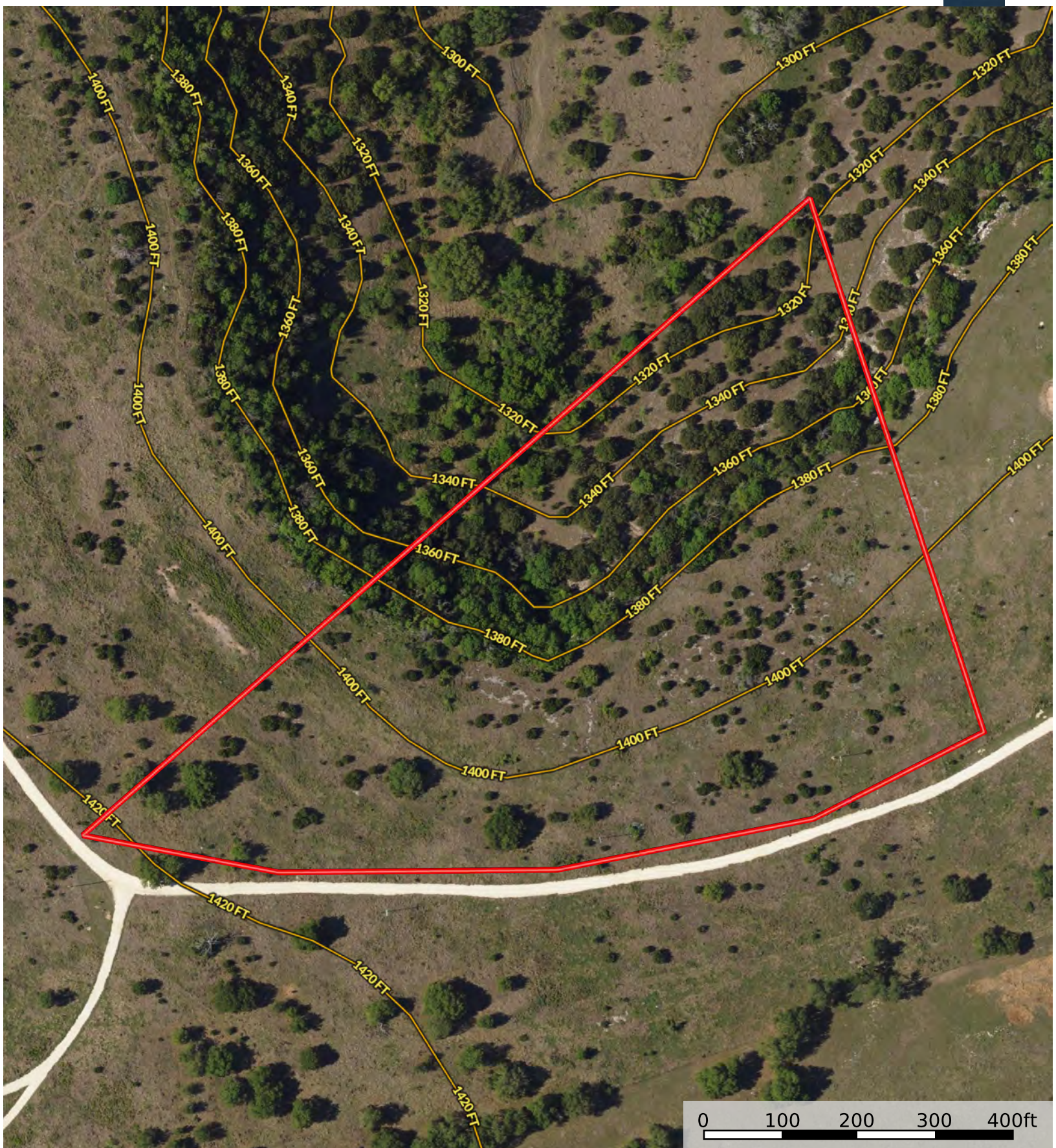
dpreston@grandland.com

(281) 787-5401





- Boundary
- Stream, Intermittent
- River/Creek
- Water Body

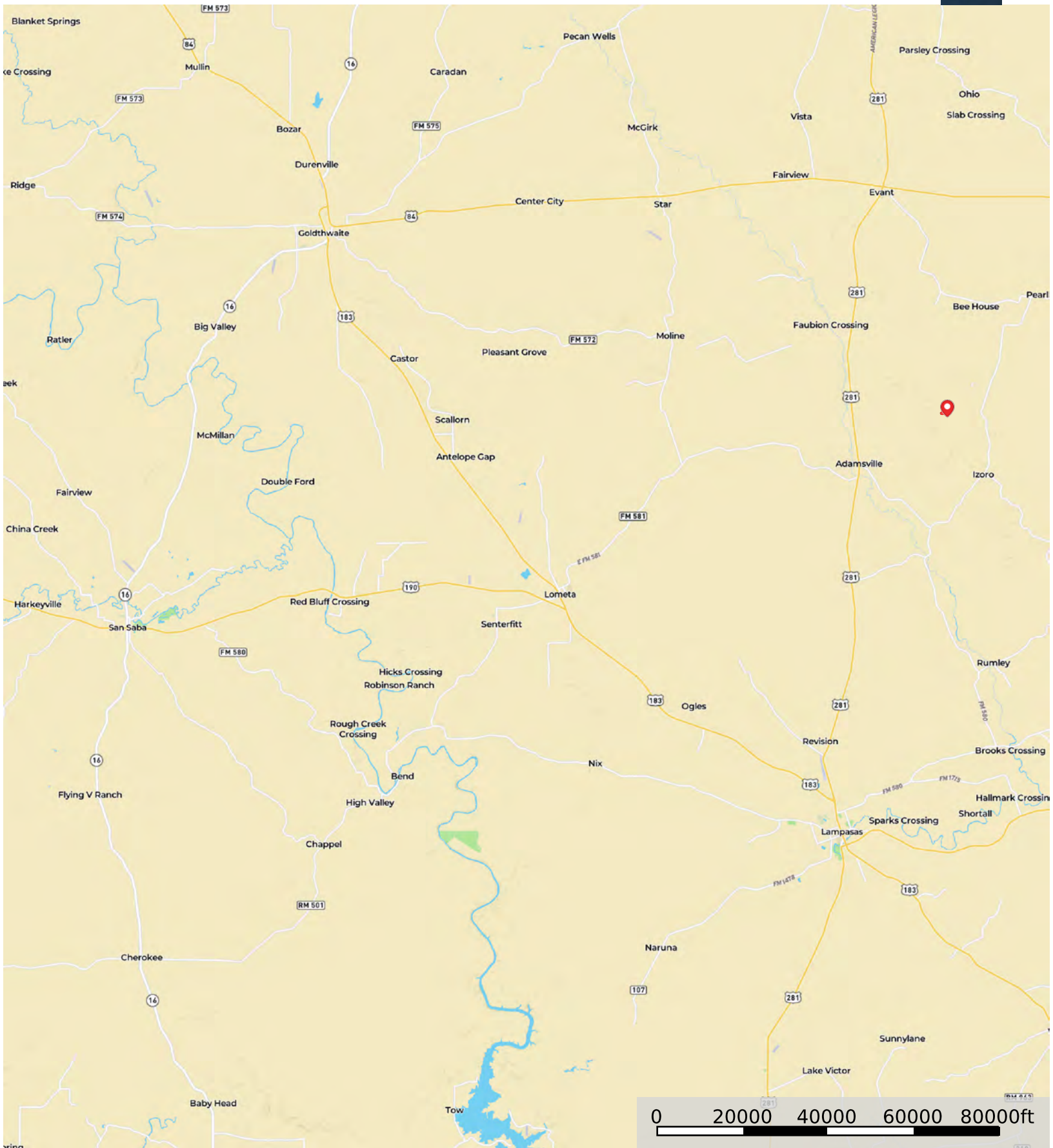


Boundary



TBD County Road 3900, Adamsville, TX, 76550

Lampasas County, Texas, 13 AC +/-



Marker Boundary



mapbox

0 200 400 600 800ft

Boundary 1 Boundary