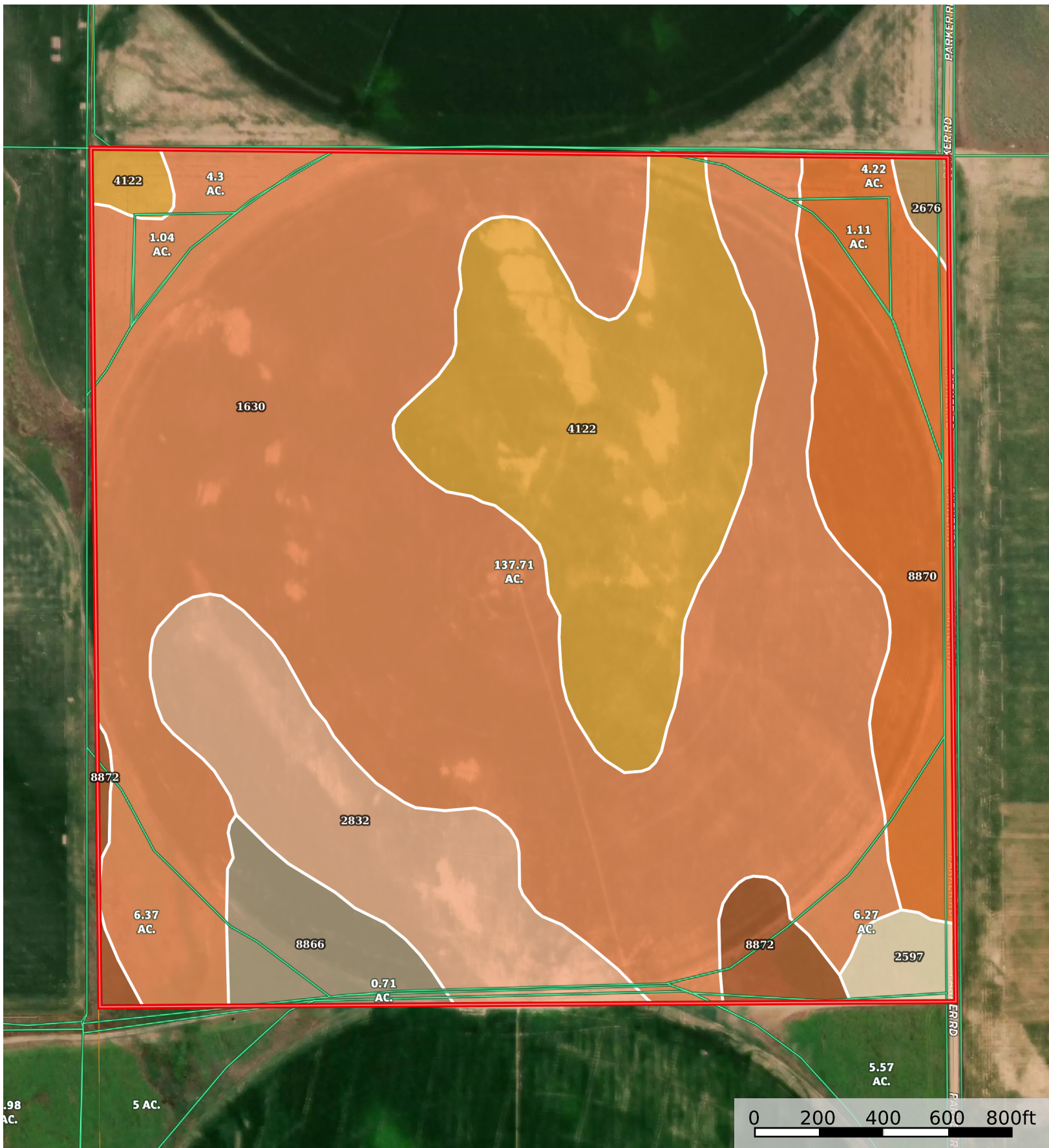


# Cal Dahlgren Lincoln County Pivot

Lincoln County, Nebraska, 160 AC +/-



Boundary

Boundary 161.6 ac

SOIL CODE	SOIL DESCRIPTION	ACRES	%	CPI	NCCPI	CAP
1630	Keith silt loam, 3 to 6 percent slopes, eroded	90.01	55.7	0	49	3e
4122	Holdrege and Uly silt loams, 7 to 11 percent slopes	27.6	17.08	0	63	4e
8870	Hord silt loam, 1 to 3 percent slopes	17.15	10.61	0	75	2e
2832	Uly-Coly silt loams, 6 to 11 percent slopes	15.36	9.5	0	69	4e
8866	Hord silt loam, 0 to 1 percent slopes, warm	5.35	3.31	0	81	2c
8872	Hord silt loam, 3 to 6 percent slopes	3.27	2.02	0	61	3e
2597	Hersh fine sandy loam, 6 to 11 percent slopes	1.95	1.21	0	48	4e
2676	Holdrege silt loam, 3 to 7 percent slopes, eroded, plains and breaks	0.91	0.56	0	68	3e
TOTALS		161.6(*)	100%	-	57.45	3.14

(\*) Total acres may differ in the second decimal compared to the sum of each acreage soil. This is due to a round error because we only show the acres of each soil with two decimal.

