

Aerial



Property Description

PROPERTY DESCRIPTION

This 11.6-acre wooded parcel in Arcadia provides a private and serene setting suitable for a variety of uses. Whether for building a custom single-family home, establishing a homestead, or utilizing the land for agricultural purposes, this lot offers ample space and zoning versatility. An additional 10-acre lot adjacent to this property is also available, presenting the option to purchase one or both parcels to meet your needs. These properties offer a balance of seclusion and practicality, making them a great choice for those seeking space and flexibility in a desirable area.

LOCATION DESCRIPTION

Located in DeSoto County Florida, Arcadia offers a blend of small-town charm and essential amenities. The area is known for its natural beauty and growing community appeal, making these lots a prime investment for residential or agricultural development.

PROPERTY SIZE

11.6 Acres

ZONING

A-10

FUTURE LAND USE

Neighborhood Mixed Use

PARCEL ID

22-38-24-0000-0055-0020

PRICE

\$275,000

BROKER CONTACT INFO

Richie Timmons

Advisor

813.287.8787 x116

richie@thedirt dog.com

Additional Photos



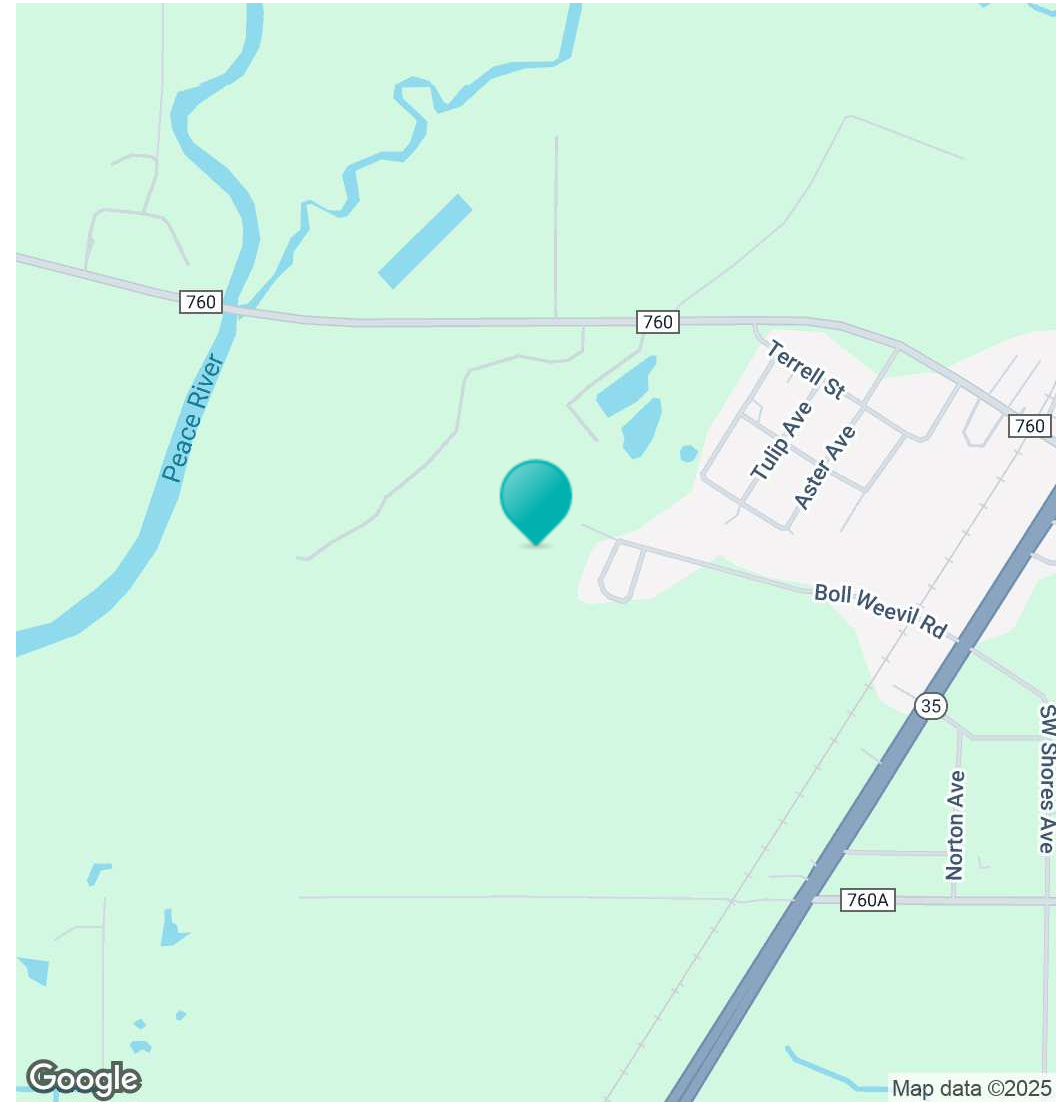
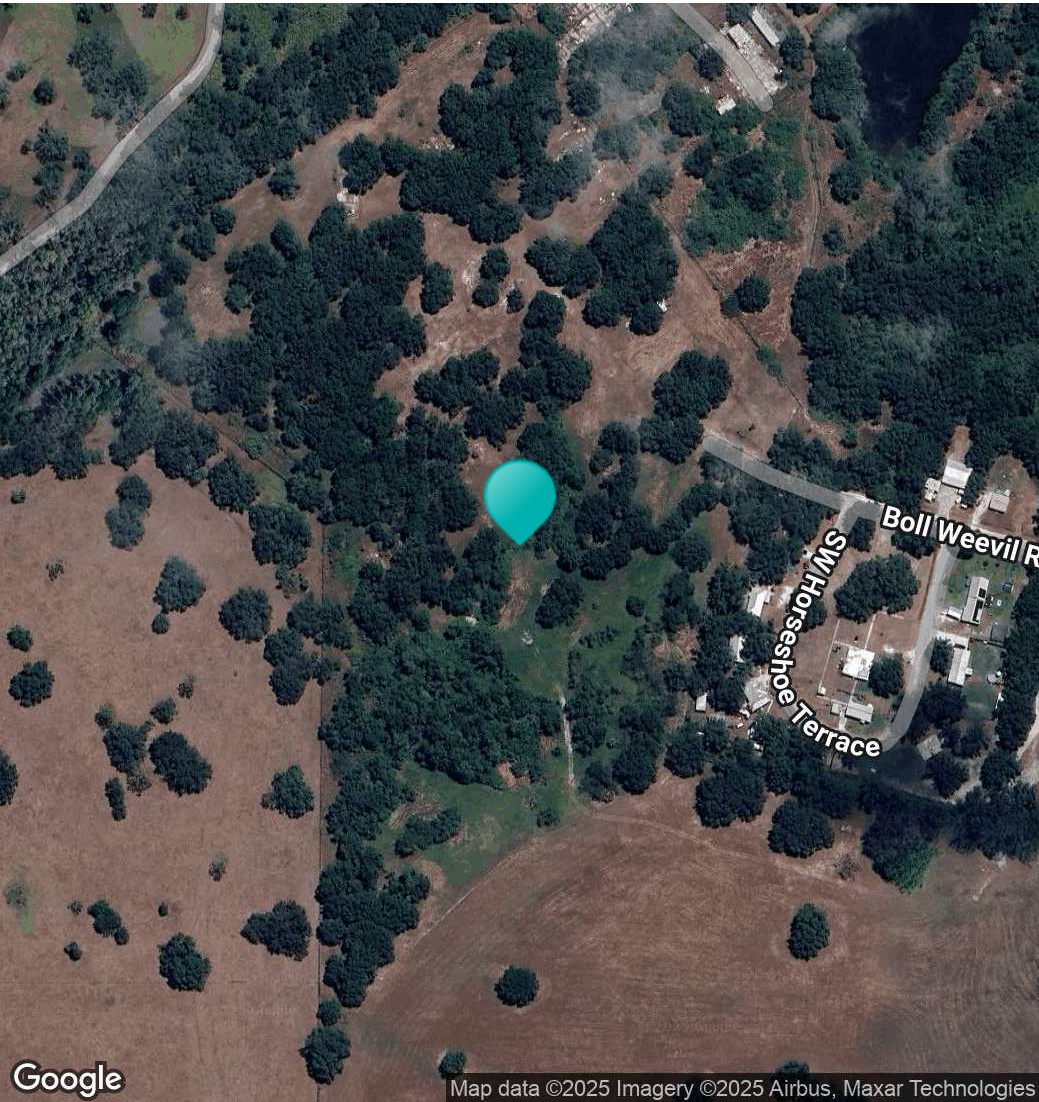
Additional Photos



Additional Photos



Location Map



Demographics Map & Report

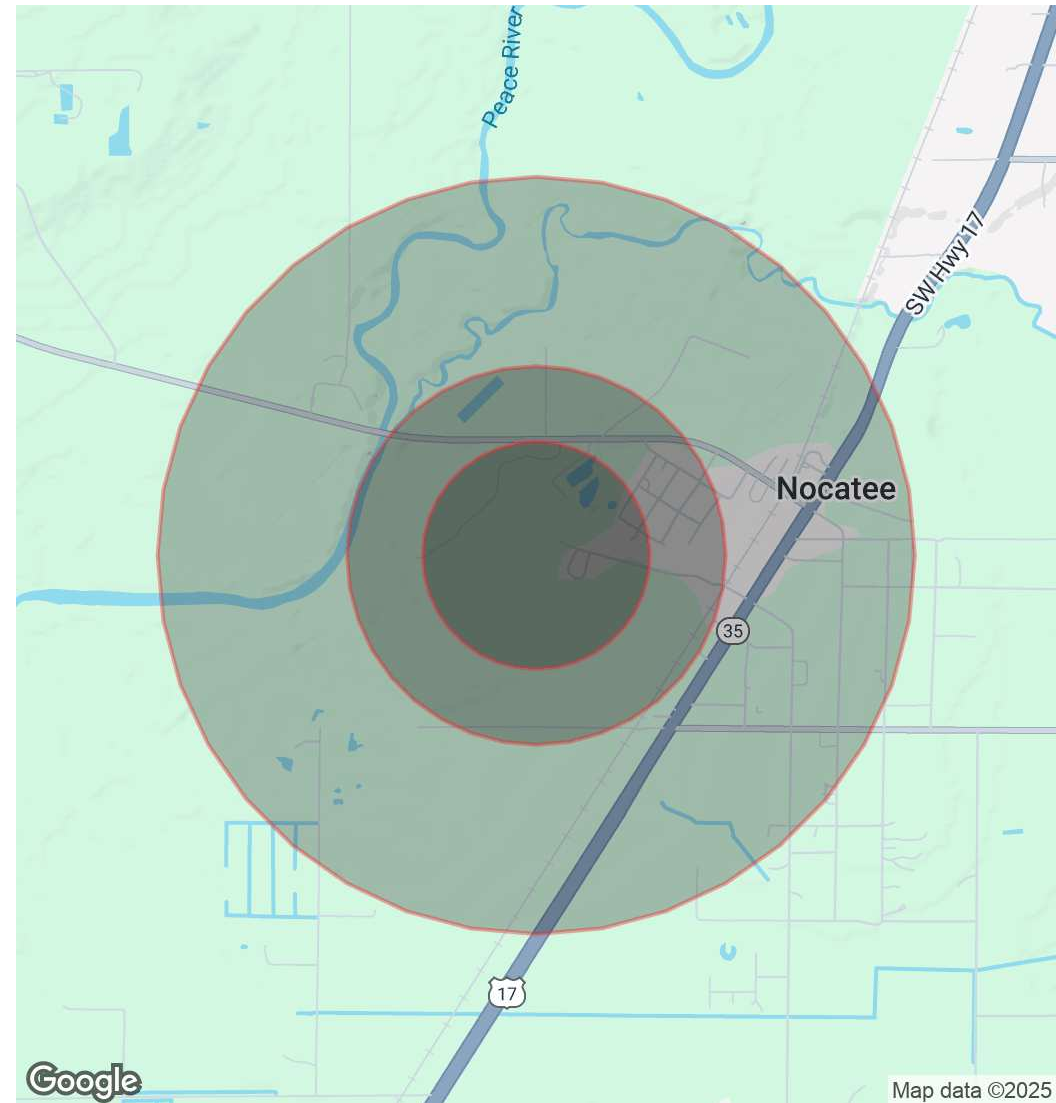
POPULATION

	0.3 MILES	0.5 MILES	1 MILE
Total Population	174	313	655
Average Age	41	41	40
Average Age (Male)	41	40	40
Average Age (Female)	41	41	41

HOUSEHOLDS & INCOME

	0.3 MILES	0.5 MILES	1 MILE
Total Households	62	111	232
# of Persons per HH	2.8	2.8	2.8
Average HH Income	\$66,364	\$65,461	\$64,614
Average House Value	\$217,007	\$209,863	\$199,960

Demographics data derived from AlphaMap



Confidentiality & Disclaimer

All materials and information received or derived from Eshenbaugh Land Company, LLC its directors, officers, agents, advisors, affiliates and/or any third party sources are provided without representation or warranty as to completeness, veracity, or accuracy, condition of the property, compliance or lack of compliance with applicable governmental requirements, developability or suitability, financial performance of the property, projected financial performance of the property for any party's intended use or any and all other matters.

Neither Eshenbaugh Land Company, LLC its directors, officers, agents, advisors, or affiliates makes any representation or warranty, express or implied, as to accuracy or completeness of the any materials or information provided, derived, or received. Materials and information from any source, whether written or verbal, that may be furnished for review are not a substitute for a party's active conduct of its own due diligence to determine these and other matters of significance to such party. Eshenbaugh Land Company, LLC will not investigate or verify any such matters or conduct due diligence for a party unless otherwise agreed in writing. EACH PARTY SHALL CONDUCT ITS OWN INDEPENDENT INVESTIGATION AND DUE DILIGENCE.

Any party contemplating or under contract or in escrow for a transaction is urged to verify all information and to conduct their own inspections and investigations including through appropriate third party independent professionals selected by such party. All financial data should be verified by the party including by obtaining and reading applicable documents and reports and consulting appropriate independent professionals. Eshenbaugh Land Company, LLC makes no warranties and/or representations

regarding the veracity, completeness, or relevance of any financial data or assumptions. Eshenbaugh Land Company, LLC does not serve as a financial advisor to any party regarding any proposed transaction. All data and assumptions regarding financial performance, including that used for financial modeling purposes, may differ from actual data or performance. Any estimates of market rents and/or projected rents that may be provided to a party do not necessarily mean that rents can be established at or increased to that level. Parties must evaluate any applicable contractual and governmental limitations as well as market conditions, vacancy factors and other issues in order to determine rents from or for the property.

Legal questions should be discussed by the party with an attorney. Tax questions should be discussed by the party with a certified public accountant or tax attorney. Title questions should be discussed by the party with a title officer or attorney. Questions regarding the condition of the property and whether the property complies with applicable governmental requirements should be discussed by the party with appropriate engineers, architects, contractors, other consultants and governmental agencies. All properties and services are marketed by Eshenbaugh Land Company, LLC in compliance with all applicable fair housing and equal opportunity laws.

Eshenbaugh Land Company is a licensed real estate brokerage firm in Florida and William A. Eshenbaugh is the broker of record.