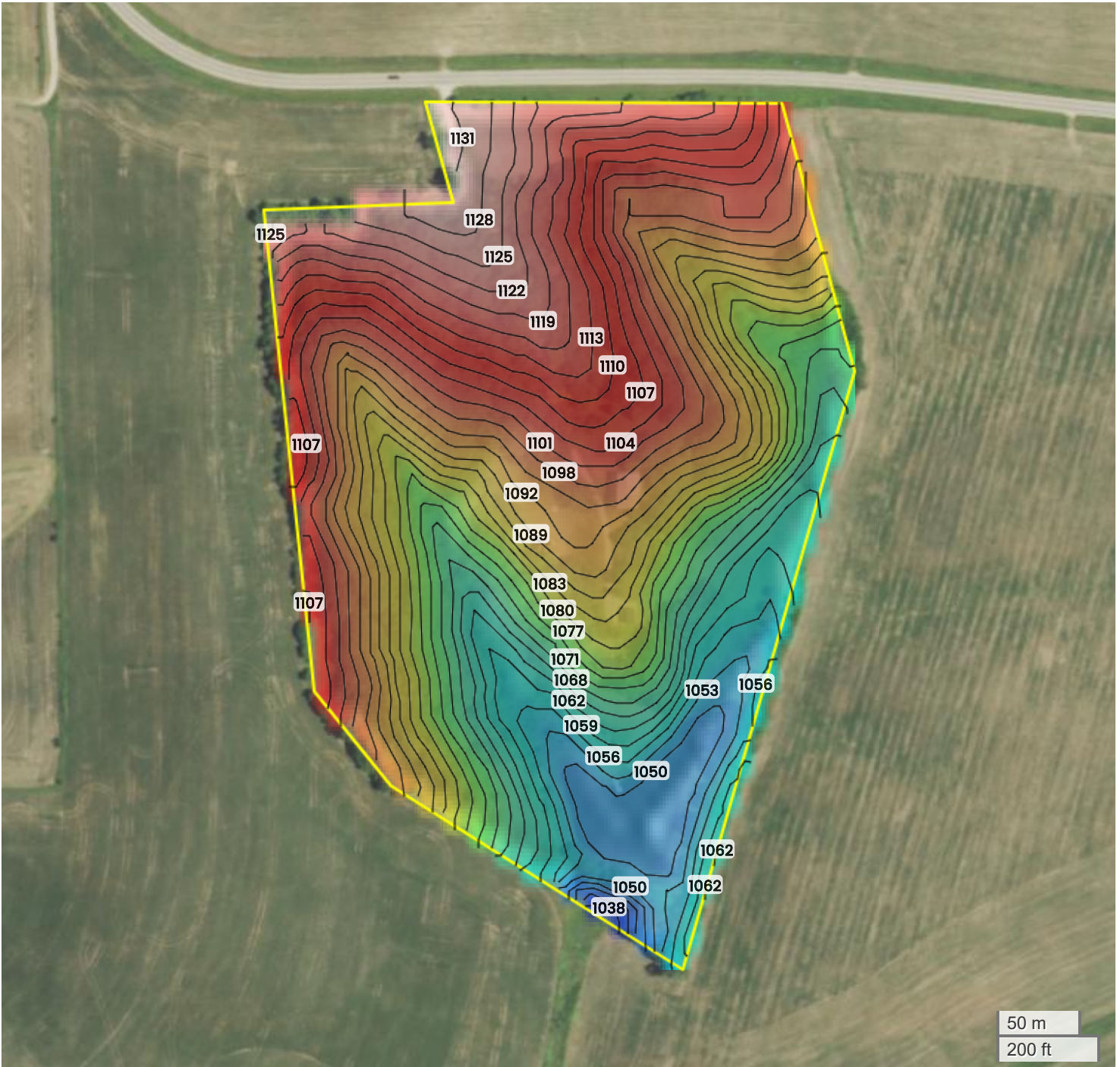




776 COUNTY ROAD J MINERAL POINT, WI
TOPOGRAPHY



Center: 42.847834, -90.315436

01-4N-1E
Mifflin Township
Iowa County, WI

Source: USGS 10m DEM
 Interval(ft): 3
 Max: 1131.0 ft
 Min: 1038.0 ft
 Range: 93.0 ft
 Average: 1084.5 ft



FarmWorth, LLC makes no representations or warranties, express or implied, as to the accuracy of any information, data, numerical values, boundaries, or any other information generated through the use of FarmWorth.com. User is solely responsible for independently investigating and determining all information provided through FarmWorth.com prior to use and waives any and all claims against FarmWorth, LLC for any inaccuracies or inconsistencies in the information and/or data.