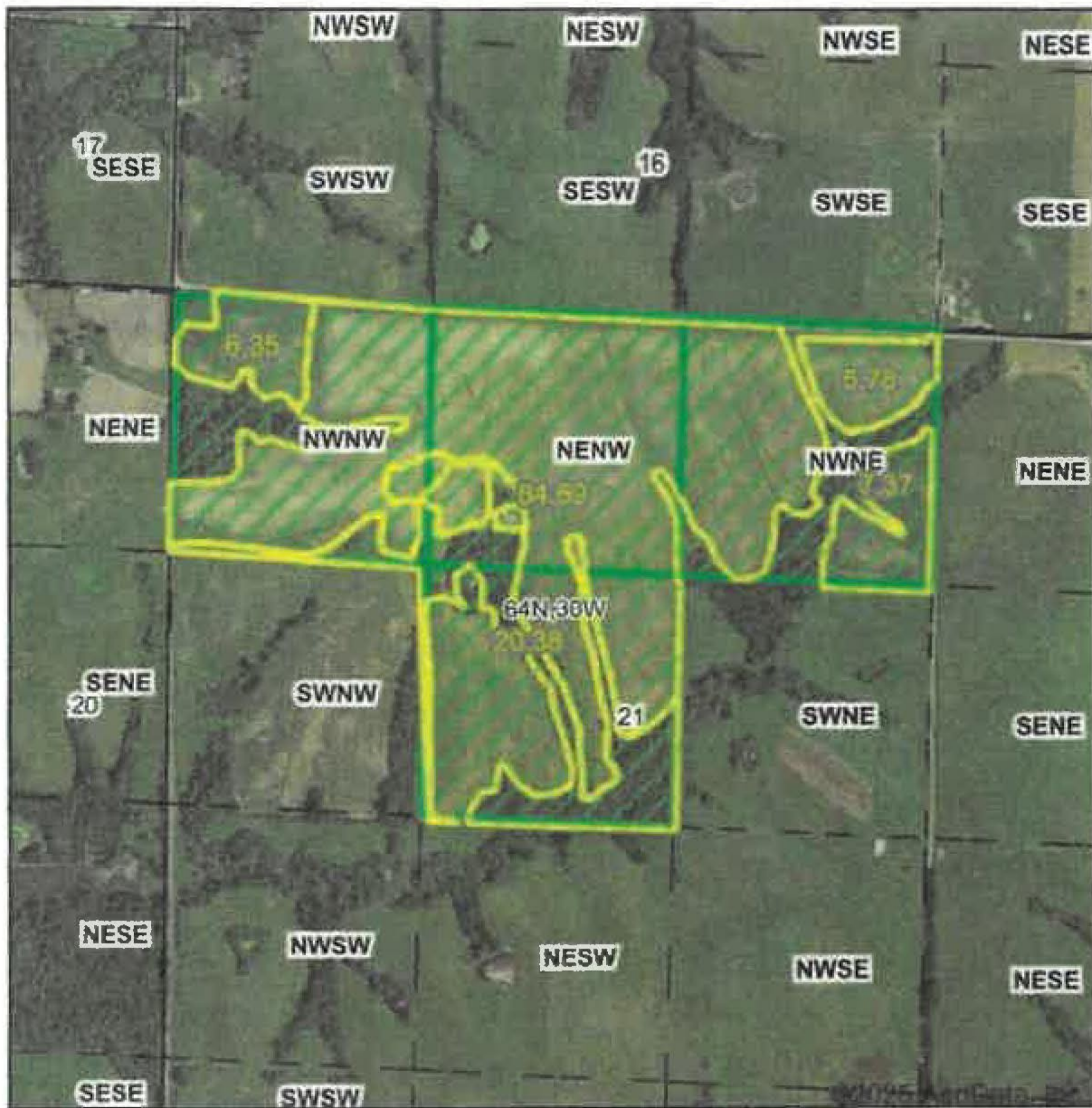
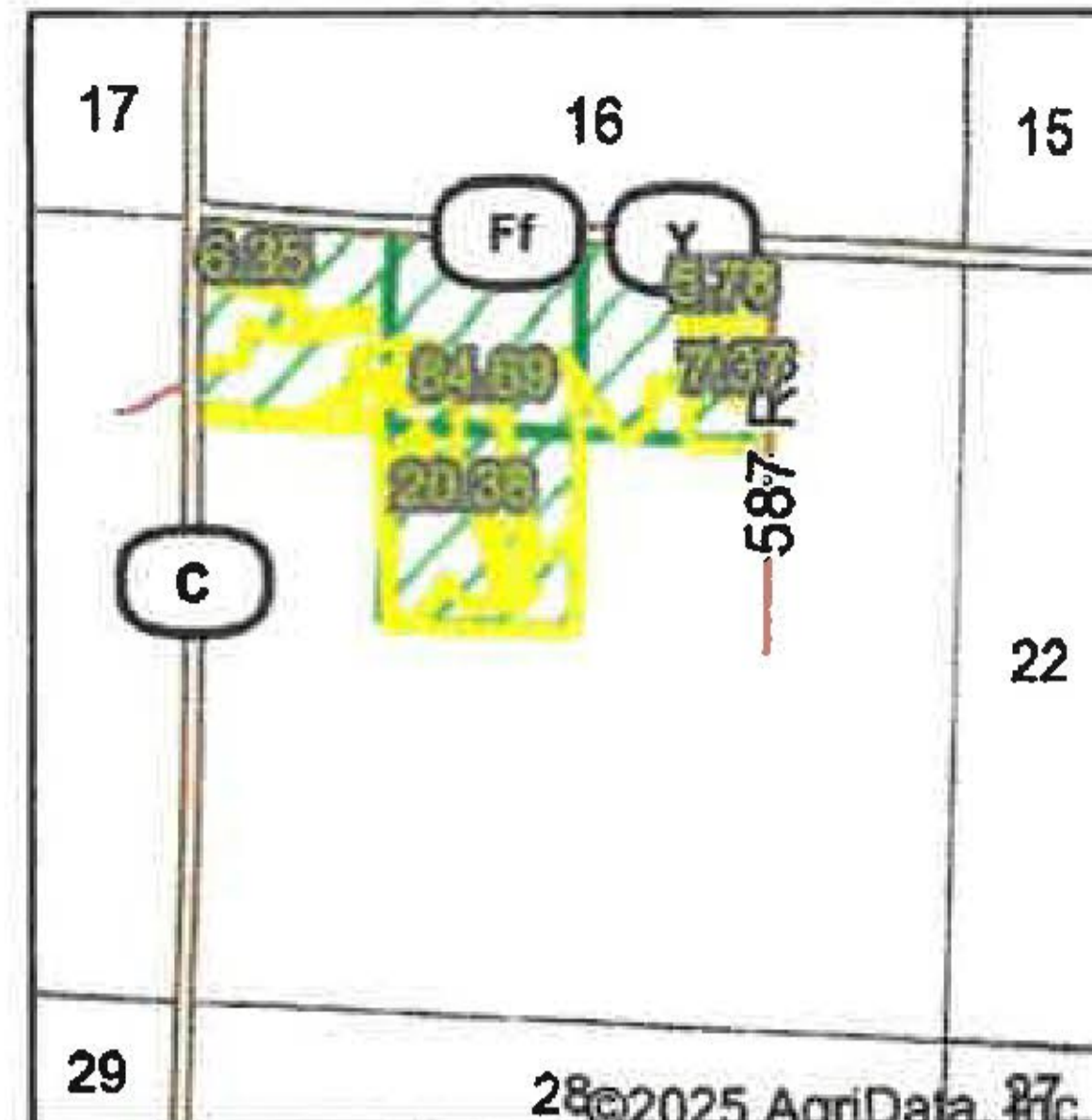


PLSS Legal Description



Map Center: 40° 20' 6.85, -94° 17' 14.49



Acres: **124.57**
 Date: **2/5/2025**
 Township: **Howard**
 County: **Gentry**
 State: **Missouri**

Maps Provided By:

 © AgriData, Inc. 2023 www.AgriDataInc.com



PLSS Source: **Various State Sources**

PLSS Note: **No Government Lots. Quarters created by equally splitting the sections**

Short Legal:

PT NWNW; NENW; PT NWNE; PT SENW 21-64N-30W

Long Legal:

PART OF THE NW1/4 NW1/4; NE1/4 NW1/4; PART OF THE NW1/4 NE1/4; PART OF THE SE1/4 NW1/4 OF SECTION 21, TOWNSHIP 64 NORTH, 30 WEST, GENTRY COUNTY, MISSOURI