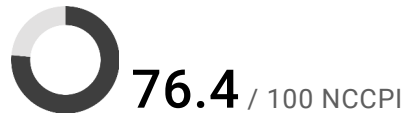
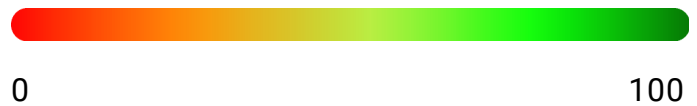
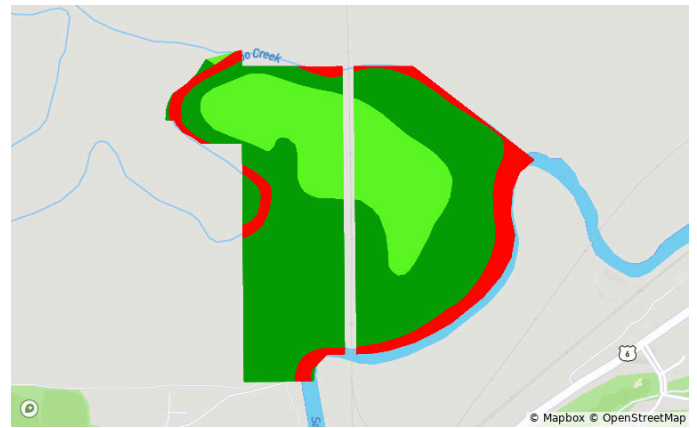
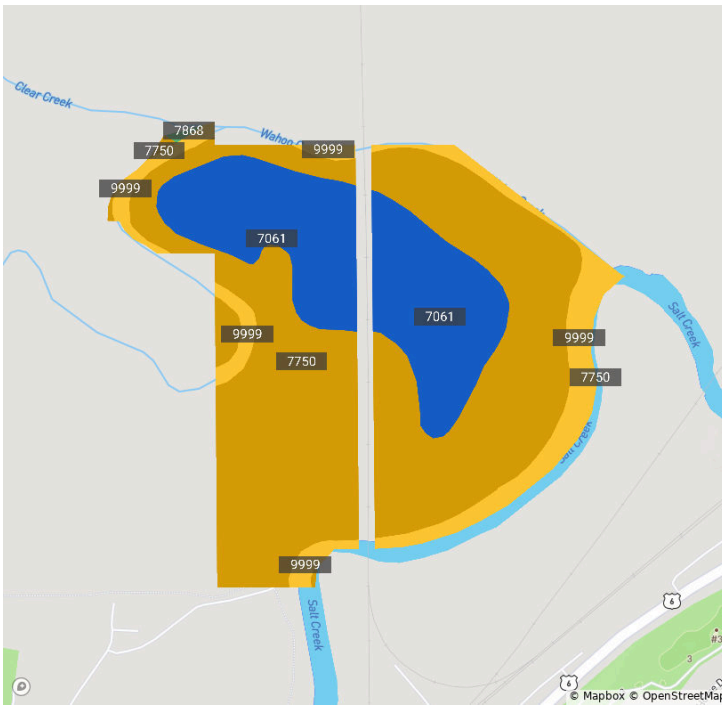


# Soils

Saunders, NE • Township: Ashland • Location: 36-13N-9E

125.91 acres, 3 selections



Code	Soil Description	Acres	% of Field	Non-IRR Class	IRR Class	NCCPI
7750	Nodaway silt loam, occasionally flooded	73.1	61.3%	2w	2w	94.4
7061	Muscotah silty clay loam, occasionally flooded	32.9	27.6%	2w	—	67.0
9999	Water	13.2	11.0%	—	—	0.0
7868	Nodaway silt loam, channeled, occasionally flooded	0.1	0.1%	6w	—	64.8