

For more maps and information resources, visit us at - <http://www.franklin.kansasgis.com>

8.5x11_Portrait




Date: 1/31/2025

Franklin County makes every effort to produce and publish the most current and accurate information possible. This information is furnished as a public service. The information must be accepted and used by the recipient with the understanding that the data was developed and collected for the purpose of developing property valuations, using the criteria of fair market value, as required by the State of Kansas. The Appraised Value and Tax Information are updated at different times during the year and, therefore, may not always reflect same year values. Franklin County assumes no liability whatsoever associated with the use or misuse of such data, and disclaims any representation or warranty regarding the completeness or accuracy of the data.
 Note: Acreage and Square Footage data shown are approximate and may not be consistent with records maintained for appraisal purposes.
 ©2013 Franklin County, Kansas Government.
 Data sources: Franklin County, Kansas Government, Kansas Geospatial Commons (DASC)

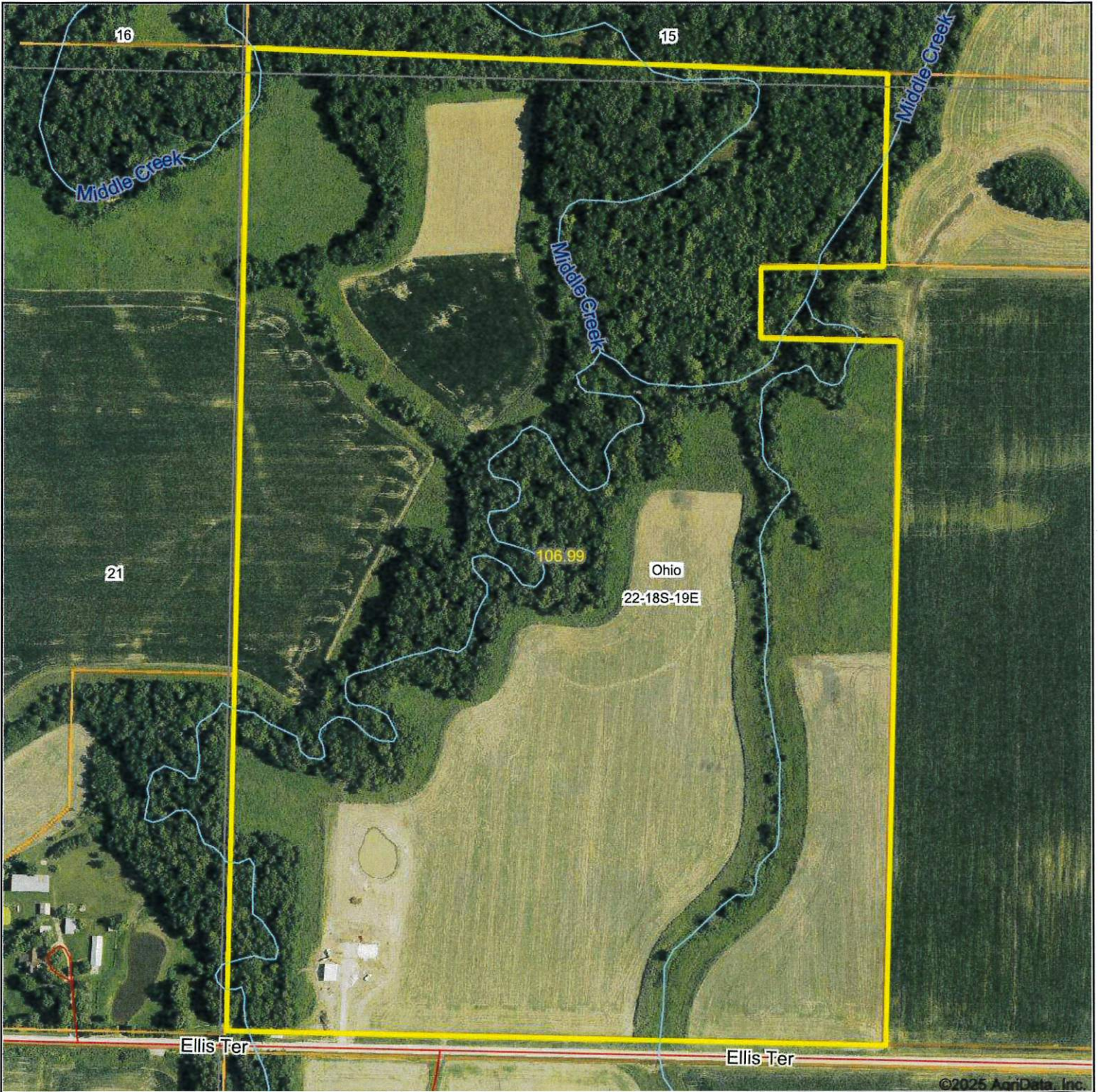


Franklin County
Kansas

Legend

-  Selection(s)
-  County Boundary
-  Property Parcels

Aerial Map



©2025 AgriData, Inc.



Maps Provided By:

CUSTOMIZED ONLINE MAPPING
© AgriData, Inc. 2023 www.AgriDataInc.com

Boundary Center: 38° 28' 26.14, -95° 18' 3.92

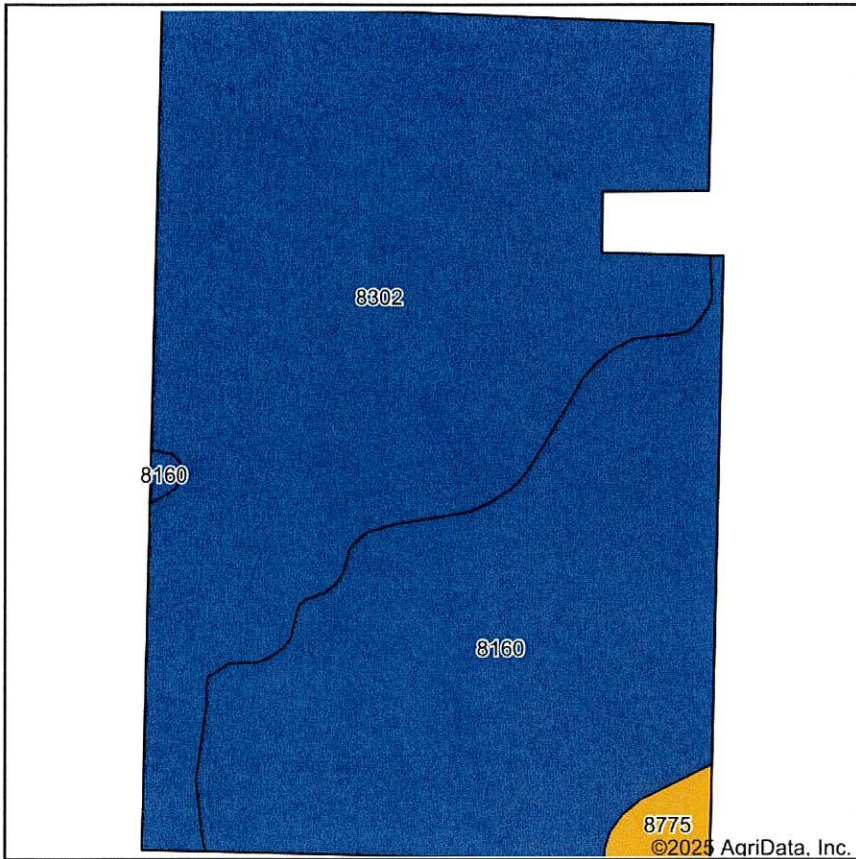
0ft 423ft 846ft

22-18S-19E
Franklin County
Kansas

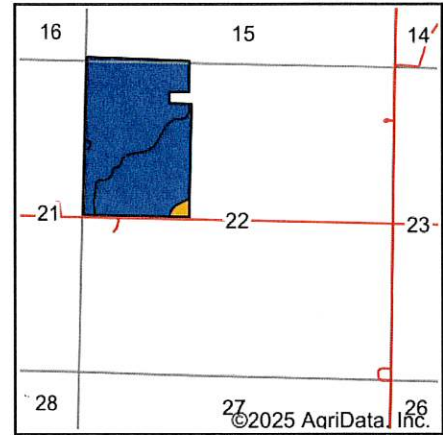


2/5/2025

Soils Map



Soils data provided by USDA and NRCS.



State: **Kansas**
 County: **Franklin**
 Location: **22-18S-19E**
 Township: **Ohio**
 Acres: **106.99**
 Date: **2/5/2025**



Maps Provided By:



Area Symbol: KS059, Soil Area Version: 24							
Code	Soil Description	Acres	Percent of field	Non-Irr Class Legend	Non-Irr Class *c	Range Production (lbs/acre/yr)	*n NCCPI Soybeans
8302	Verdigris silt loam, 0 to 1 percent slopes, occasionally flooded	63.93	59.8%		IIw	7758	75
8160	Leanna silt loam, 0 to 2 percent slopes, occasionally flooded	41.44	38.7%		IIw	7500	63
8775	Kenoma silt loam, 1 to 3 percent slopes	1.62	1.5%		IIIe	3888	59
Weighted Average					2.02	7599.5	*n 70.1

*n: The aggregation method is "Weighted Average using all components"
 *c: Using Capabilities Class Dominant Condition Aggregation Method

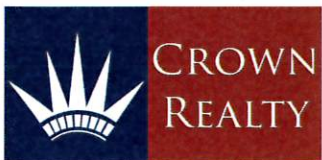
Soils data provided by USDA and NRCS.

Aerial Map



©2025 AgriData, Inc.

Boundary Center: 38° 28' 26.14, -95° 18' 3.92



© AgriData, Inc. 2023 www.AgriDataInc.com

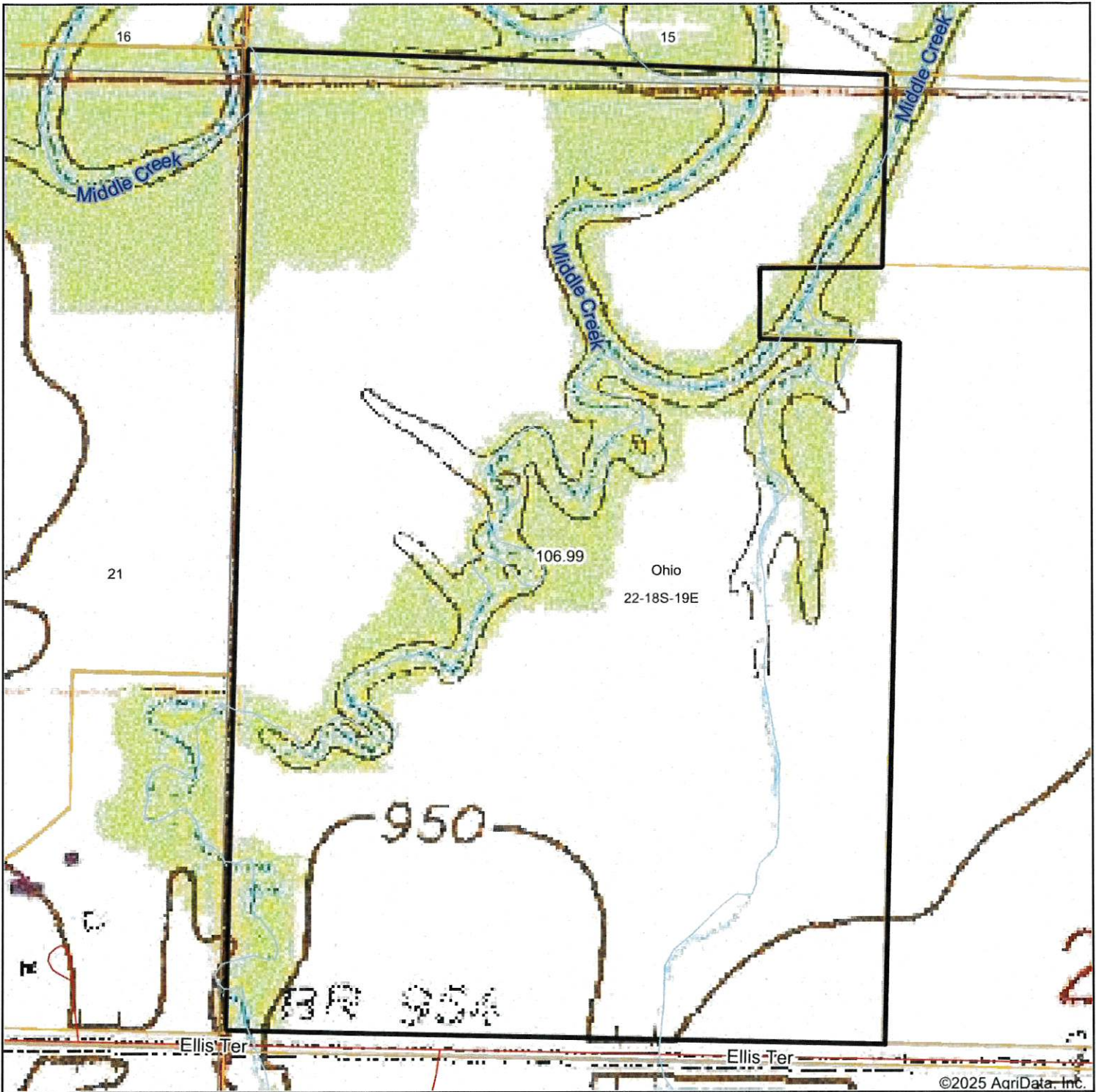
22-18S-19E
Franklin County
Kansas



2/5/2025

Flood related information provided by FEMA

Topography Map



Map Center: 38° 28' 26.14, -95° 18' 4.56



Maps Provided By:



© AgriData, Inc. 2023

www.AgriDataInc.com

22-18S-19E
Franklin County
Kansas



2/5/2025