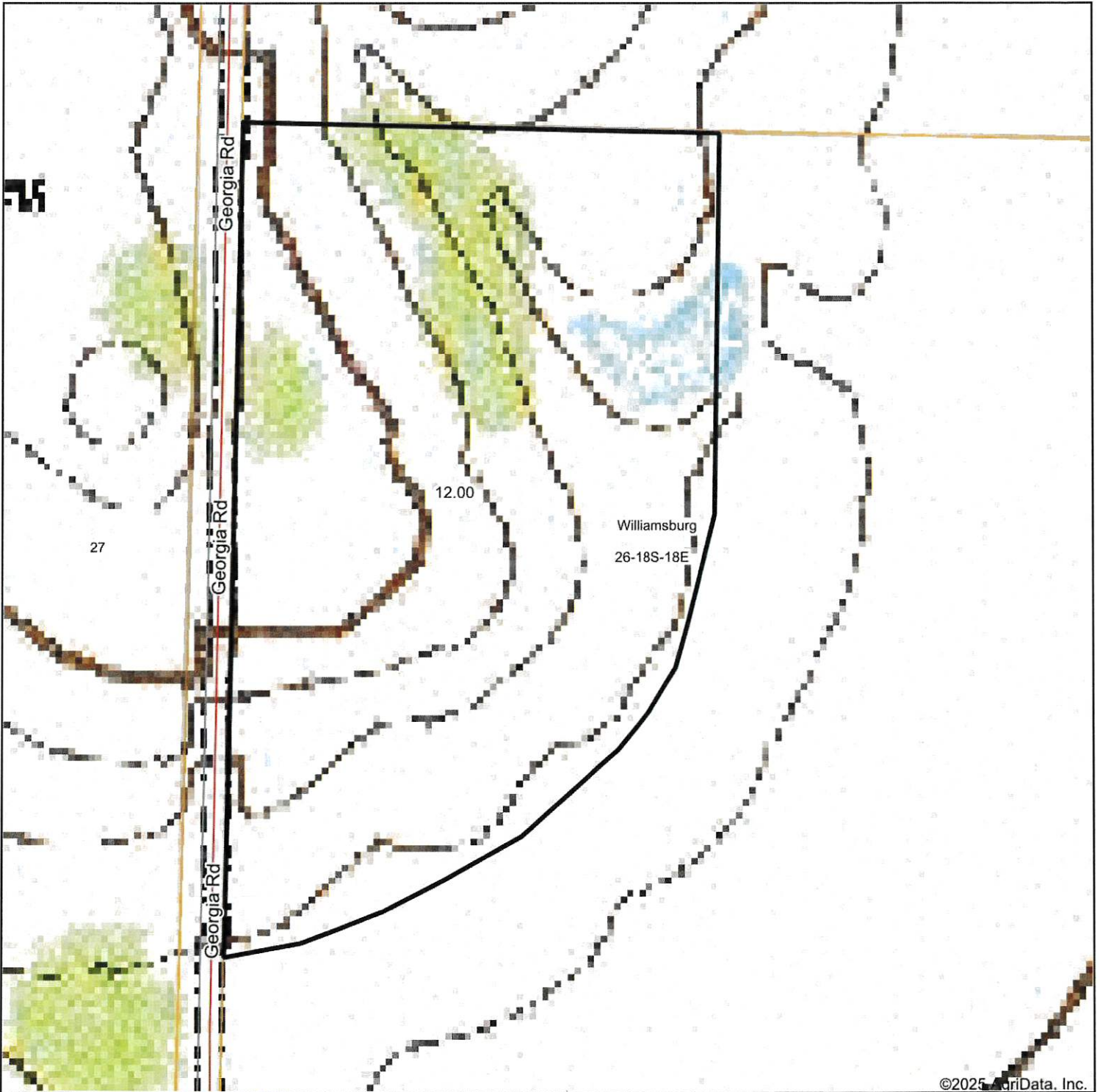


Topography Map



Map Center: 38° 27' 2.18, -95° 23' 44.97

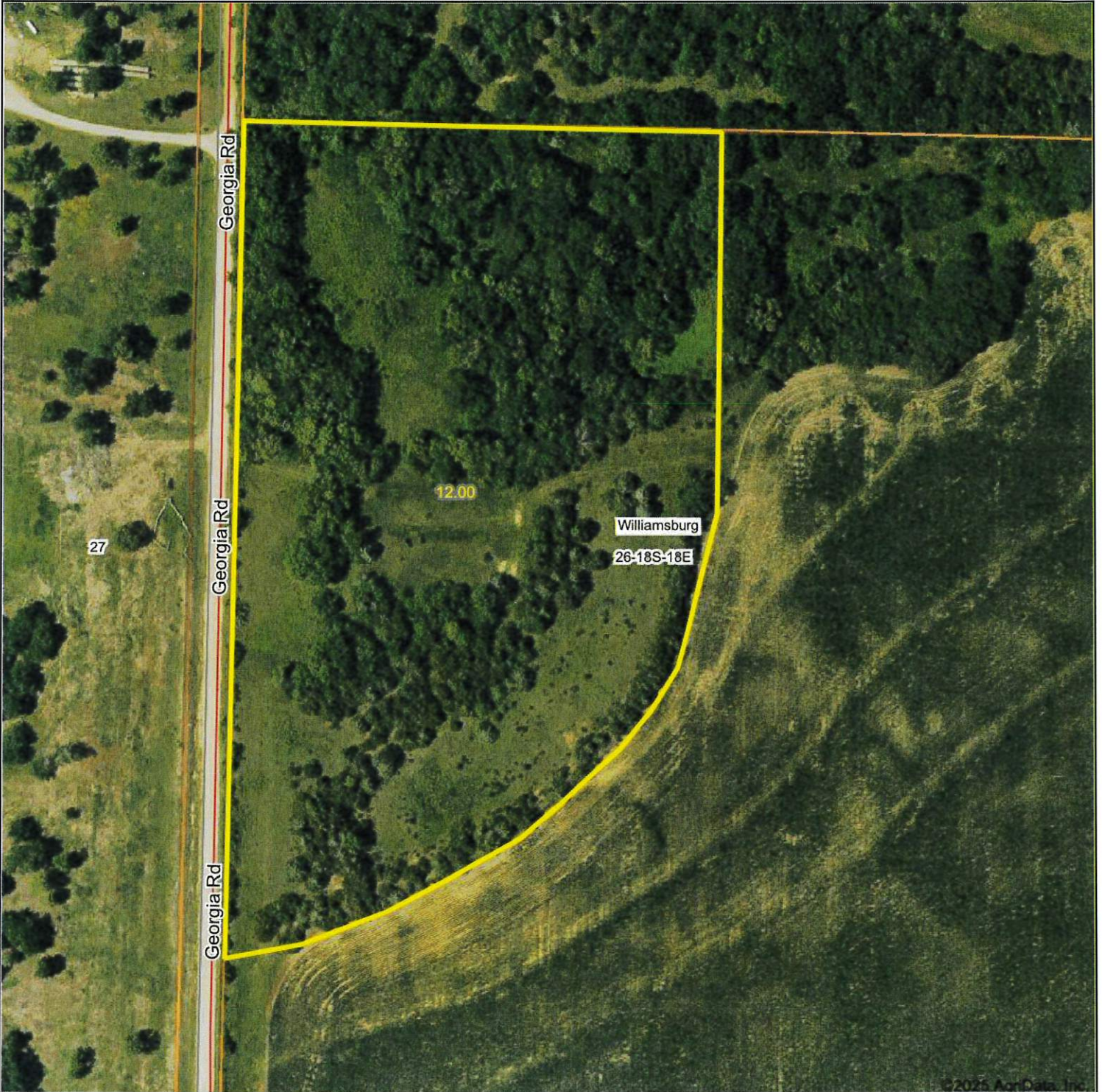


26-18S-18E
Franklin County
Kansas



2/6/2025

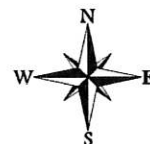
Aerial Map



Boundary Center: 38° 27' 2.18, -95° 23' 46.13

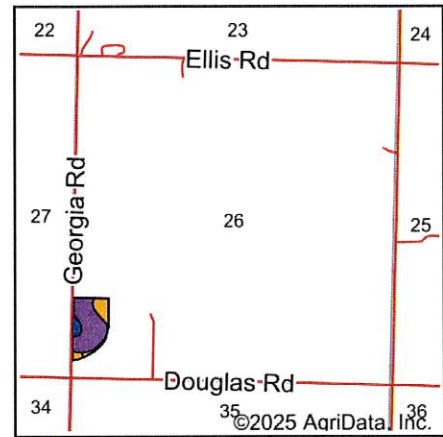
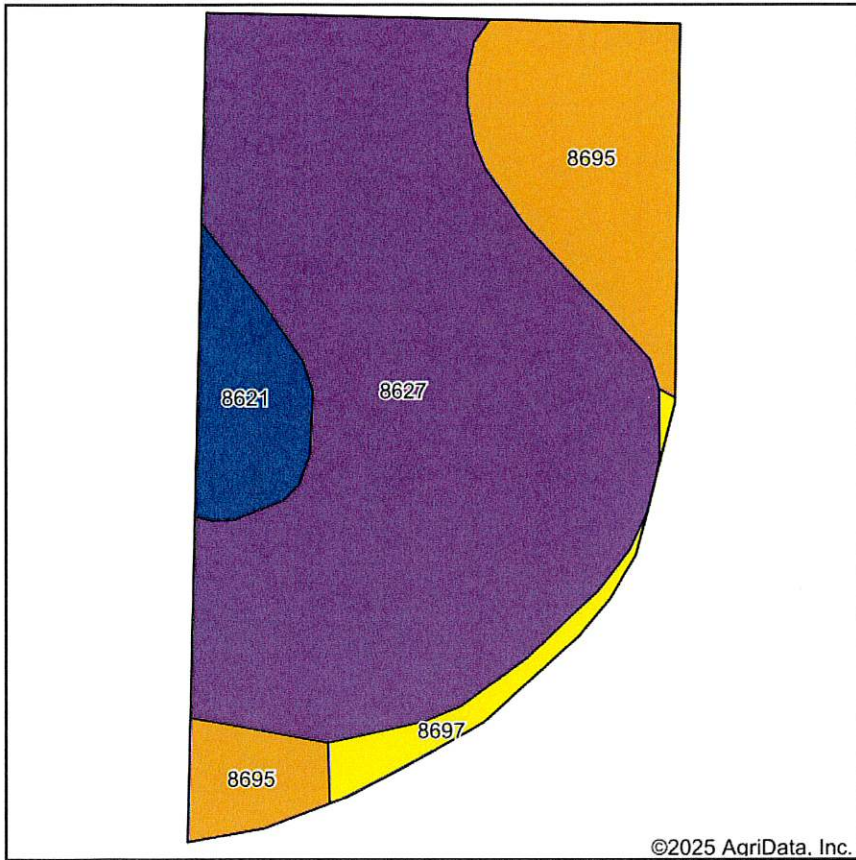


26-18S-18E
Franklin County
Kansas

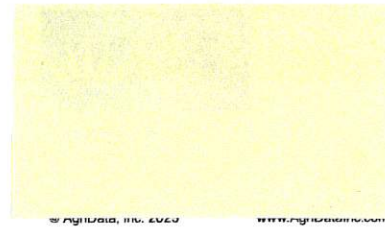


2/6/2025

Soils Map



State: **Kansas**
 County: **Franklin**
 Location: **26-18S-18E**
 Township: **Williamsburg**
 Acres: **12**
 Date: **2/6/2025**



Area Symbol: KS059, Soil Area Version: 24

| Code | Soil Description | Acres | Percent of field | Non-Irr Class Legend | Non-Irr Class *c | Range Production (lbs/acre/yr) | *n NCCPI Soybeans |
|-------------------------|---|-------|------------------|----------------------|------------------|--------------------------------|-------------------|
| 8627 | Bates-Collinsville complex, 3 to 15 percent slopes | 8.41 | 70.1% | | Vle | 4136 | 36 |
| 8695 | Dennis-Bates complex, 3 to 7 percent slopes | 2.35 | 19.6% | | IIIe | 5500 | 59 |
| 8621 | Bates loam, 1 to 3 percent slopes | 0.85 | 7.1% | | Ile | 4735 | 52 |
| 8697 | Dennis-Bates complex, 3 to 7 percent slopes, eroded | 0.39 | 3.2% | | IVe | 5370 | 43 |
| Weighted Average | | | | | 5.06 | 4485.7 | *n 41.9 |

*n: The aggregation method is "Weighted Average using all components"

*c: Using Capabilities Class Dominant Condition Aggregation Method