



Bluff Creek Hideaway



**266
Acres**



Located in southern Edwards County
 Very, very remote; End of road property
 1200 sq ft Cabin with new carpeting and tile; all furnishings and appliances will convey
 New pex piping Water well, electricity, septic
 Large 2800-gallon water holding tank
 Electricity in place on 2 different parts of the property
 Large low fenced neighbor on the southwestern boundary
 The terrain has several cleared bottoms, and large dry creek running in and out of the property
 Moderately steep hills with plenty of thick cover
 Lots of the property is not disturbed and used as a sanctuary for the wildlife
 Wildlife includes axis, whitetail, aoudad, turkey, hog
 5 blinds, 30 ft hog pen, 3 watering troughs, 6 corn feeders, 2 hay feeders,
 home made deer winch, many extras
 Hunting vehicle available
 Wildlife exempt taxes listing #220
 \$679,950 Reduced \$100,000 from original asking price!

Western Hill Country Realty

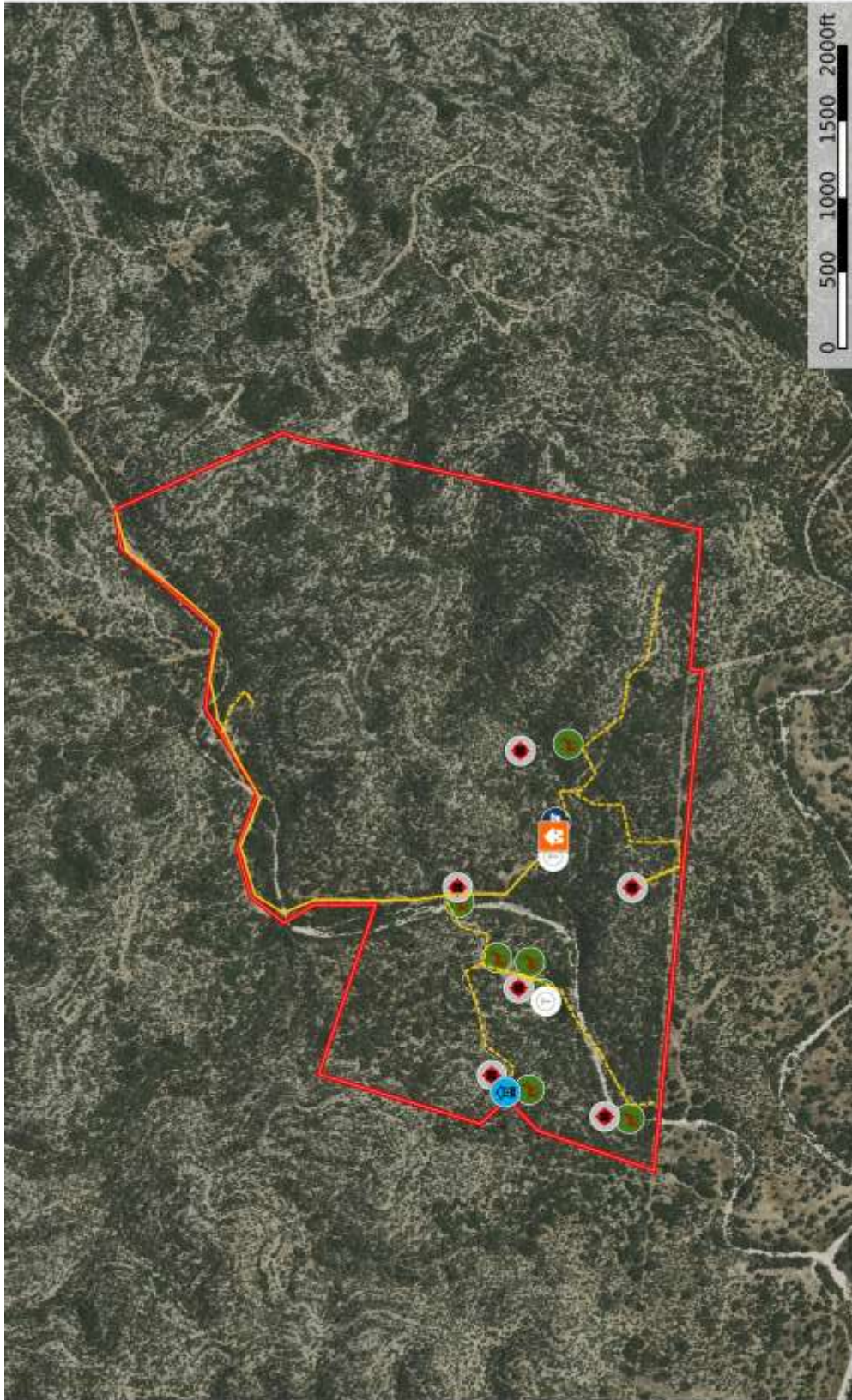
www.westernhillcountryrealty.com

info@westernhillcountryrealty.com

830-683-4435



Bluff Creek Hideaway 266 Acres



Western Hill Country Realty

www.westernhillcountryrealty.com

info@westernhillcountryrealty.com

830-683-4435



Bluff Creek Hideaway 266 Acres



Western Hill Country Realty

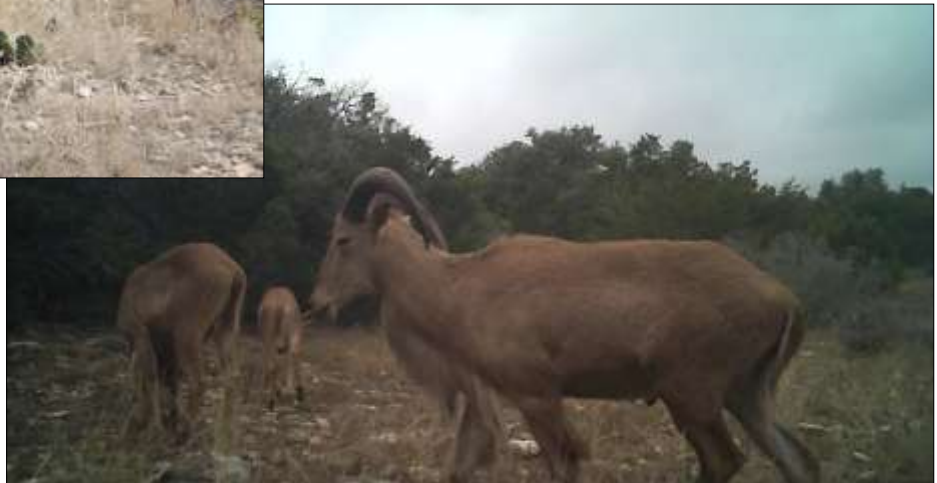
www.westernhillcountryrealty.com

info@westernhillcountryrealty.com

830-683-4435



Bluff Creek Hideaway 266 Acres



Western Hill Country Realty

www.westernhillcountryrealty.com

info@westernhillcountryrealty.com

830-683-4435