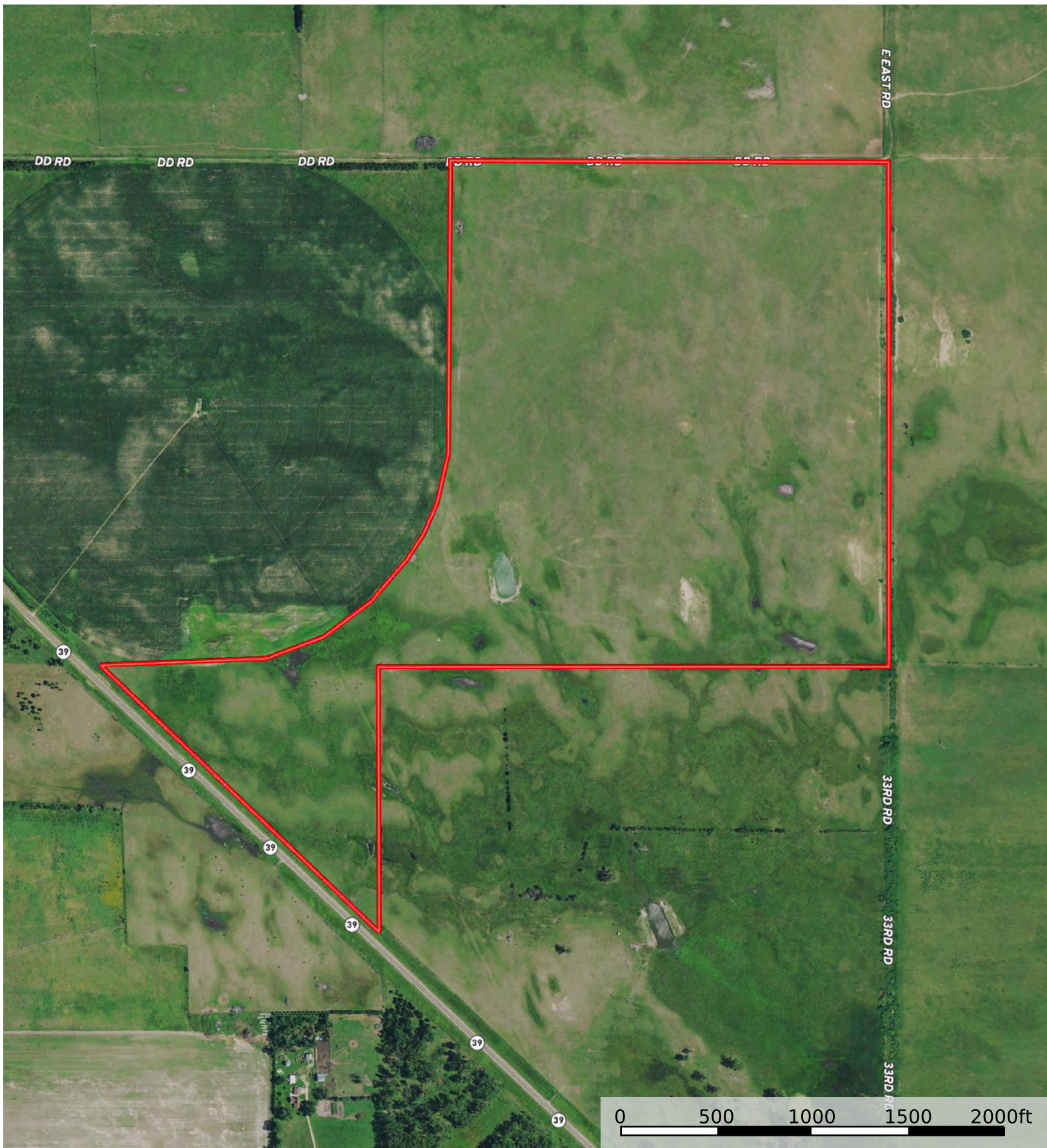



Merrick41

Merrick County, Nebraska, 163.11 AC +/-



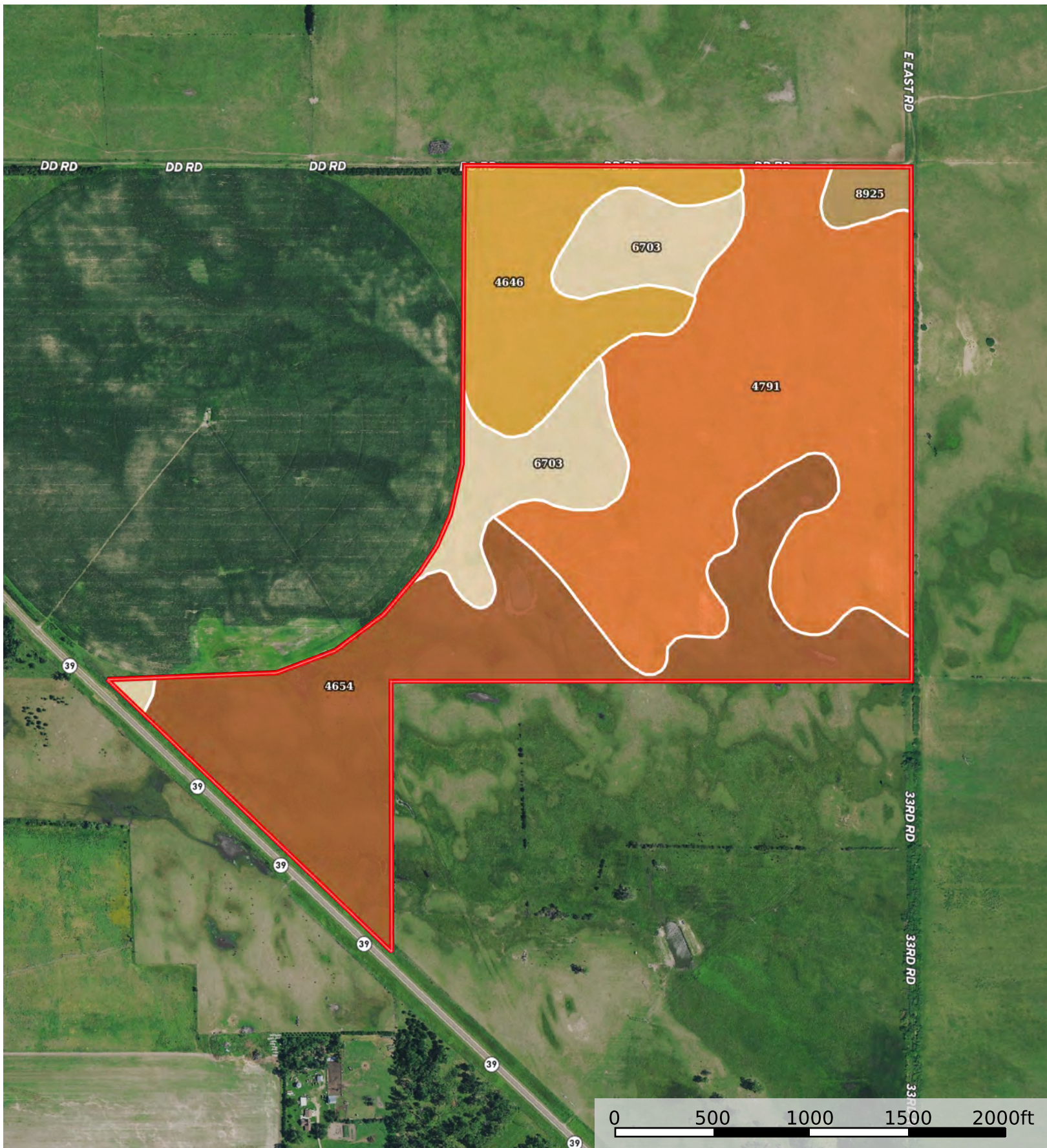
 Boundary



The information contained herein was obtained from sources deemed to be reliable. Land id™ Services makes no warranties or guarantees as to the completeness or accuracy thereof.

Merrick41

Merrick County, Nebraska, 163.11 AC +/-



 Boundary

Boundary 170.84 ac

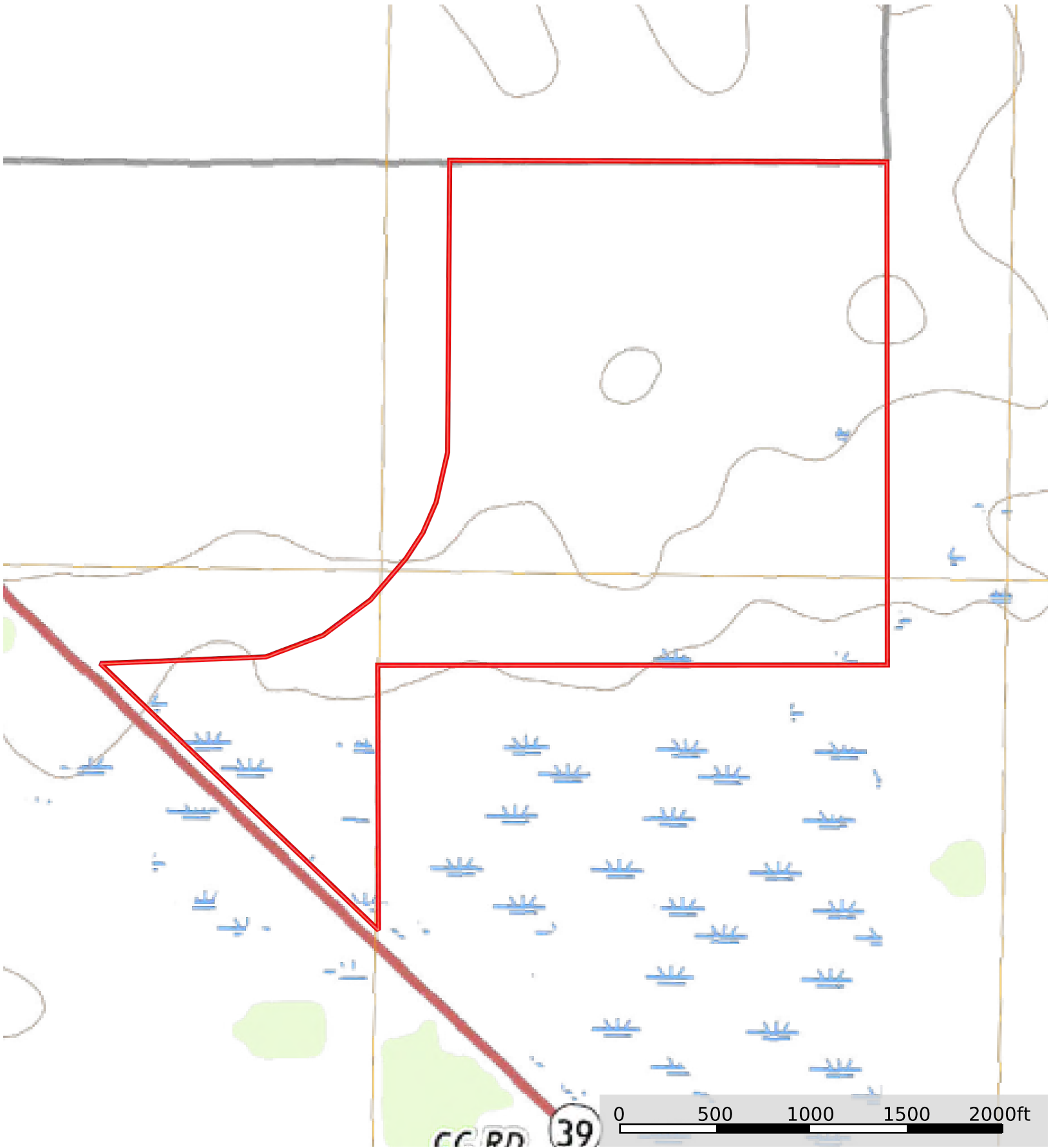
SOIL CODE	SOIL DESCRIPTION	ACRES	%	CPI	NCCPI	CAP
4791	Valentine fine sand, 3 to 9 percent slopes	69.13	40.46	0	24	6e
4654	lpage-Els loamy fine sands, 0 to 3 percent slopes	53.83	31.51	0	33	4e
4646	lpage loamy fine sand, 0 to 3 percent slopes	23.58	13.8	0	33	4e
6703	Thurman loamy fine sand, 2 to 6 percent slopes	21.54	12.61	0	40	4e
8925	Simeon loamy sand, 0 to 3 percent slopes	2.76	1.62	0	30	6s
TOTALS		170.84(*)	100%	-	30.19	4.84

(*) Total acres may differ in the second decimal compared to the sum of each acreage soil. This is due to a round error because we only show the acres of each soil with two decimal.



Merrick41

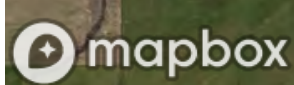
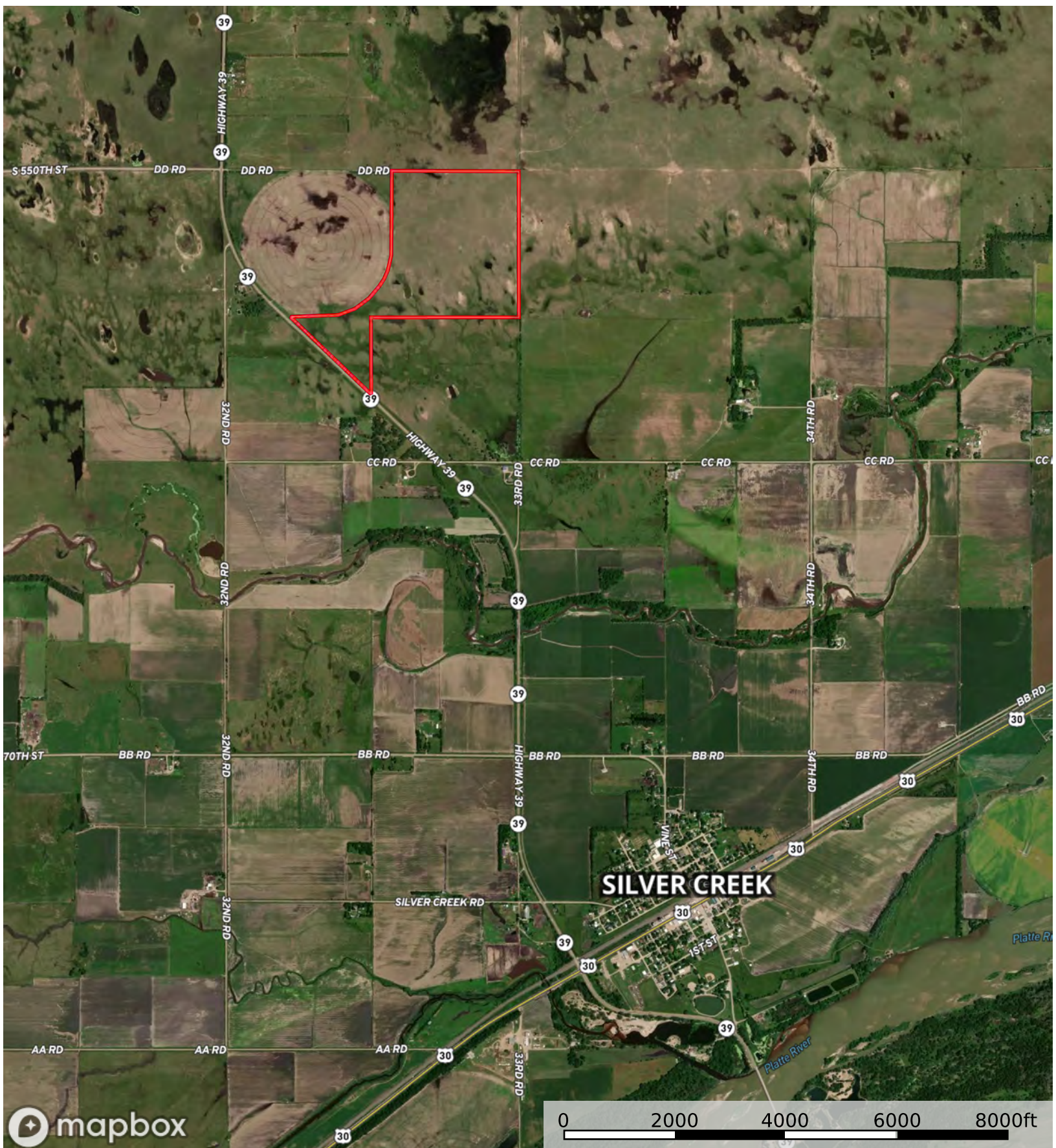
Merrick County, Nebraska, 163.11 AC +/-



 Boundary

Merrick41

Merrick County, Nebraska, 163.11 AC +/-



 Boundary