



RUPP|STEVEN
ReeceNichols South Central Kansas

LAND FOR SALE BUTLER COUNTY, KS

Location: N & W of SW 60th St & SW Tawakoni Rd, Andover, KS

**92.30 ± ACRES - TILLABLE LAND - HOMESITE POTENTIAL
QUALITY SOIL ASSOCIATIONS - ANDOVER SCHOOL DISTRICT**



Price: \$1,153,750.00 (\$12,500.00 per acre)

Total Acres: 92.30 +/- Acres

Cropland Acres: 88.50 +/- Acres

2024 Taxes: \$1,249.86

Mineral Rights: Sellers interest transfers

Legal: Located in S35, T26, R03E Butler County, KS

Possession: Subject to current tenant rights.

Contact agent for details.

Features:

- Rural Water Service Provided by Butler County RWD #5
- Development potential
- Quality tillable land and soil associations
- Minutes to Andover/Wichita amenities



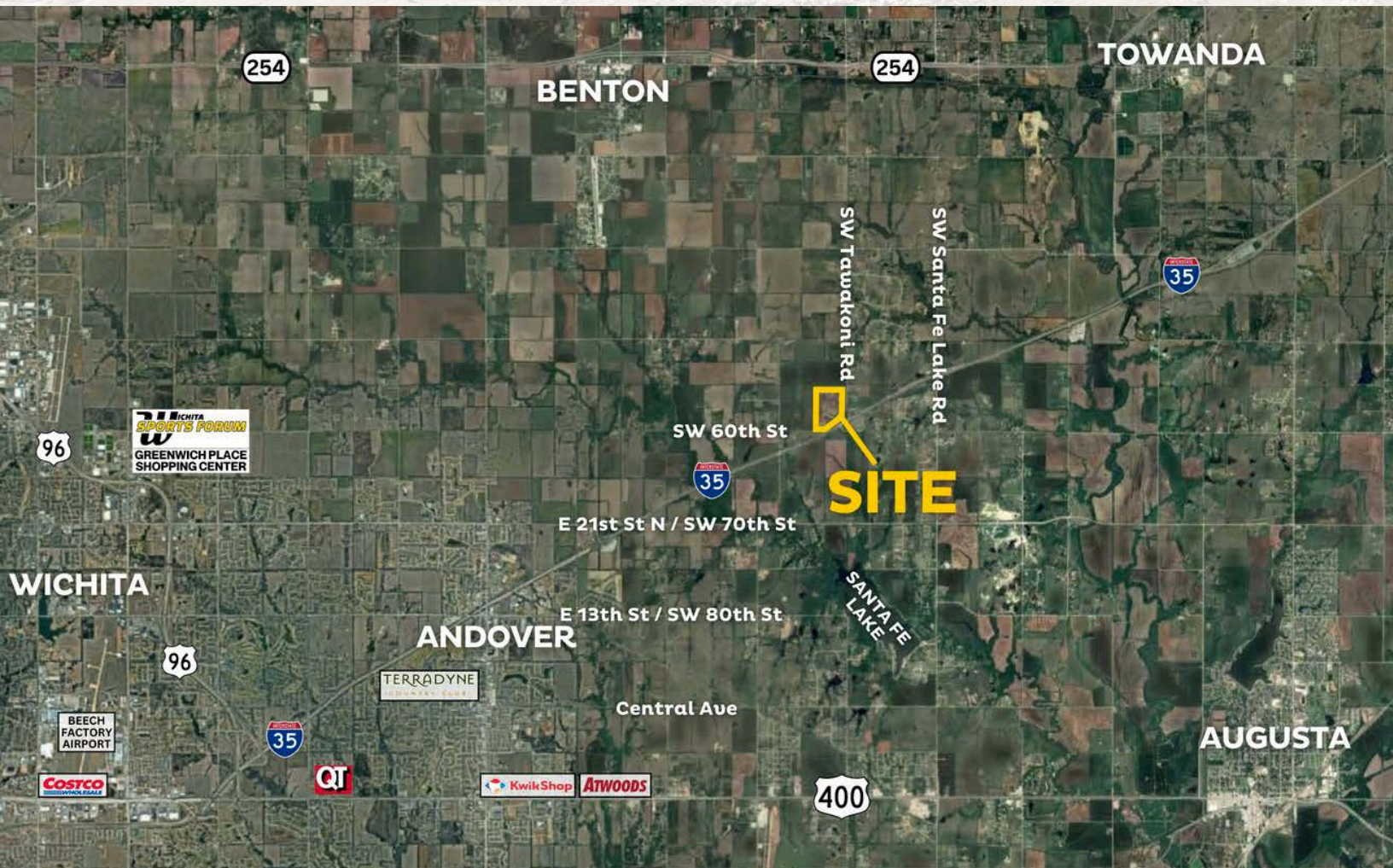


RUPP | STEVEN
ReeceNichols South Central Kansas

LAND FOR SALE BUTLER COUNTY, KS

Location: N & W of SW 60th St & SW Tawakoni Rd, Andover, KS

**92.30 ± ACRES - TILLABLE LAND - HOMESITE POTENTIAL
QUALITY SOIL ASSOCIATIONS - ANDOVER SCHOOL DISTRICT**



ReeceNichols
SOUTH CENTRAL KANSAS
An Independently Owned and Operated Member of ReeceNichols Alliance

Jake Steven, ALC
316.708.5960
jake@reecenichols.com

John Rupp, ALC
316.250.5198
johnrupp@reecenichols.com

Reese Bayliff
316.258.6062
rbayliff@reecenichols.com