



COMPREHENSIVE ENGINEERING SERVICES:
 ■ CIVIL ENGINEERING ■ WETLAND & SOIL MAPPING
 ■ LAND SURVEYING ■ CONSTRUCTION STAKING
 ■ LANDSCAPE ARCHITECTURE ■ LAND PLANNING
 ■ SOIL MAPPING & SEPTIC SYSTEMS
 ■ WETLAND & ENVIRONMENTAL MONITORING

2410 HOG MOUNTAIN ROAD, SUITE 103
 WATKINSVILLE, GA 30677
 706-613-8900 ■ 706-425-9631 (FAX)
 abe@ABEconsultinginc.com
 www.ABEconsultinginc.com

COMPOSITE PLAT FOR:
Oconee Crossing Shopping Center
 1100 & 1060 Epps Bridge Pkwy.
 OCONEE COUNTY, GEORGIA
 221 sf. G.M.D.

BEING THAT PARCEL OF LAND DESCRIBED IN
 D.B. 244, PG. 186, PB 28, PG 131, OCONEE COUNTY, Ga.

TOTAL PROJECT AREA: 5.131 ACRES
TAX PARCELS #: B 04 007A & 007AA
EXISTING ZONING: AR-1

COPYRIGHT © 2008 ABE CONSULTING, INC. RESERVES COPYRIGHT AND OTHER RIGHTS TO THE STRICT USE OF THESE DOCUMENTS FOR THE ORIGINAL PROJECT FOR WHICH THEY WERE INTENDED. ANY CHANGES OR ALTERATIONS MADE TO THIS MAP OF SURVEY WITHOUT THE WRITTEN APPROVAL OF ABE CONSULTING, INC. VOIDS THE SEAL SHOWN HEREON AND ANY LIABILITY ASSOCIATED WITH THIS PROJECT. THE ORIGINAL DRAWINGS ARE KEPT ON FILE FOR VERIFICATION OF ANY CHANGES, REPRODUCTIONS, MODIFICATIONS, OR ASSIGNMENTS ARE STRICTLY PROHIBITED.

I HEREBY CERTIFY THAT THIS MAP OF SURVEY IS ACCURATE AND CORRECT TO THE BEST OF MY KNOWLEDGE AND BELIEF AND THAT IT HAS BEEN PREPARED IN CONFORMITY WITH THE MINIMUM TECHNICAL STANDARDS AND REQUIREMENTS OF LAW OF THE STATE OF GEORGIA.



DATE PREPARED:

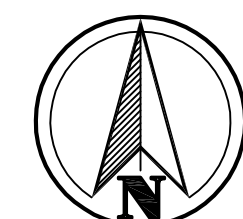
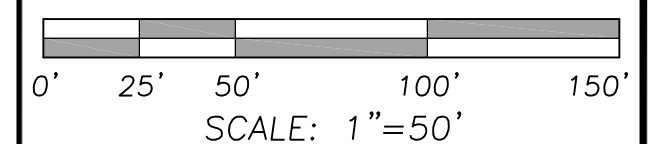
9-3-12

PROJECT #:

10-021-15

REVISIONS	DATE
...	...

GRAPHIC SCALE

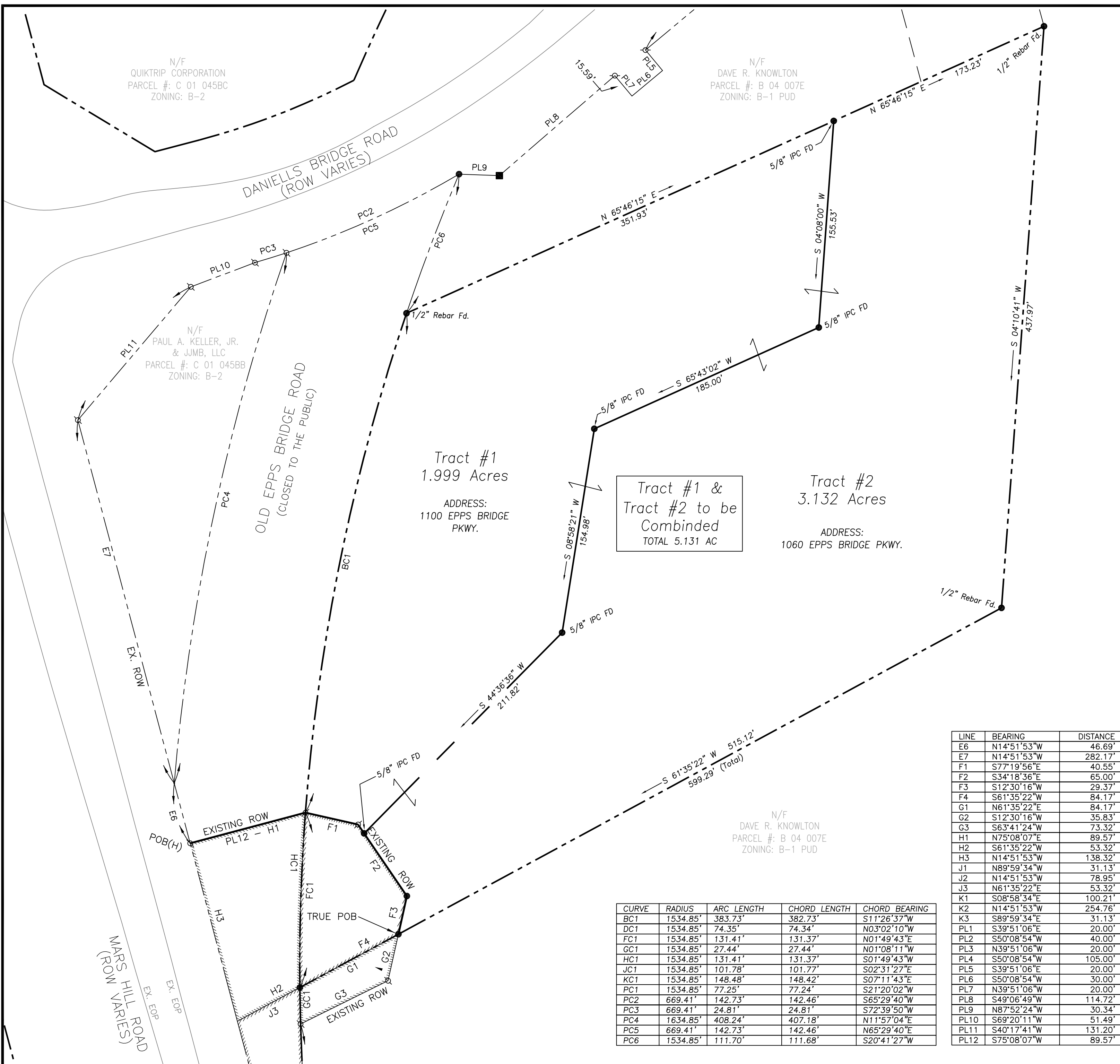


GRID - GEORGIA WEST ZONE

SHEET #

1

1



CURVE	RADIUS	ARC LENGTH	CHORD LENGTH	CHORD BEARING
BC1	1534.85'	383.73'	382.73'	S11°26'37"W
DC1	1534.85'	74.35'	74.34'	N03°02'10"W
FC1	1534.85'	131.41'	131.37'	N01°49'43"E
GC1	1534.85'	27.44'	27.44'	N01°08'11"W
HC1	1534.85'	131.41'	131.37'	S01°49'43"W
JC1	1534.85'	101.78'	101.77'	S02°31'27"E
KC1	1534.85'	148.48'	148.42'	S07°11'43"E
PC1	1534.85'	77.25'	77.24'	S21°20'02"W
PC2	669.41'	142.73'	142.46'	S65°29'40"W
PC3	669.41'	24.81'	24.81'	S72°39'50"W
PC4	1634.85'	408.24'	407.18'	N11°57'04"E
PC5	669.41'	142.73'	142.46'	N65°29'40"E
PC6	1534.85'	111.70'	111.68'	S20°41'27"W

LINE	BEARING	DISTANCE
E6	N14°51'53"W	46.69'
E7	N14°51'53"W	282.17'
F1	S77°19'56"E	40.55'
F2	S34°18'36"E	65.00'
F3	S12°30'16"W	29.37'
F4	S61°35'22"W	84.17'
G1	N61°35'22"E	84.17'
G2	S12°30'16"W	35.83'
G3	S63°41'24"W	73.32'
H1	N75°08'07"E	89.57'
H2	S61°35'22"W	53.32'
H3	N14°51'53"W	138.32'
J1	N89°59'34"W	31.13'
J2	N14°51'53"W	78.95'
J3	N61°35'22"E	53.32'
K1	S08°58'34"E	100.21'
K2	N14°51'53"W	254.76'
K3	S89°59'34"E	31.13'
PL1	S39°51'06"E	20.00'
PL2	S50°08'54"W	40.00'
PL3	N39°51'06"W	20.00'
PL4	S50°08'54"W	105.00'
PL5	S39°51'06"E	20.00'
PL6	S50°08'54"W	30.00'
PL7	N39°51'06"W	20.00'
PL8	S49°06'49"W	114.72'
PL9	N87°52'24"W	30.34'
PL10	S69°20'11"W	51.49'
PL11	S40°17'41"W	131.20'
PL12	S75°08'07"W	89.57'