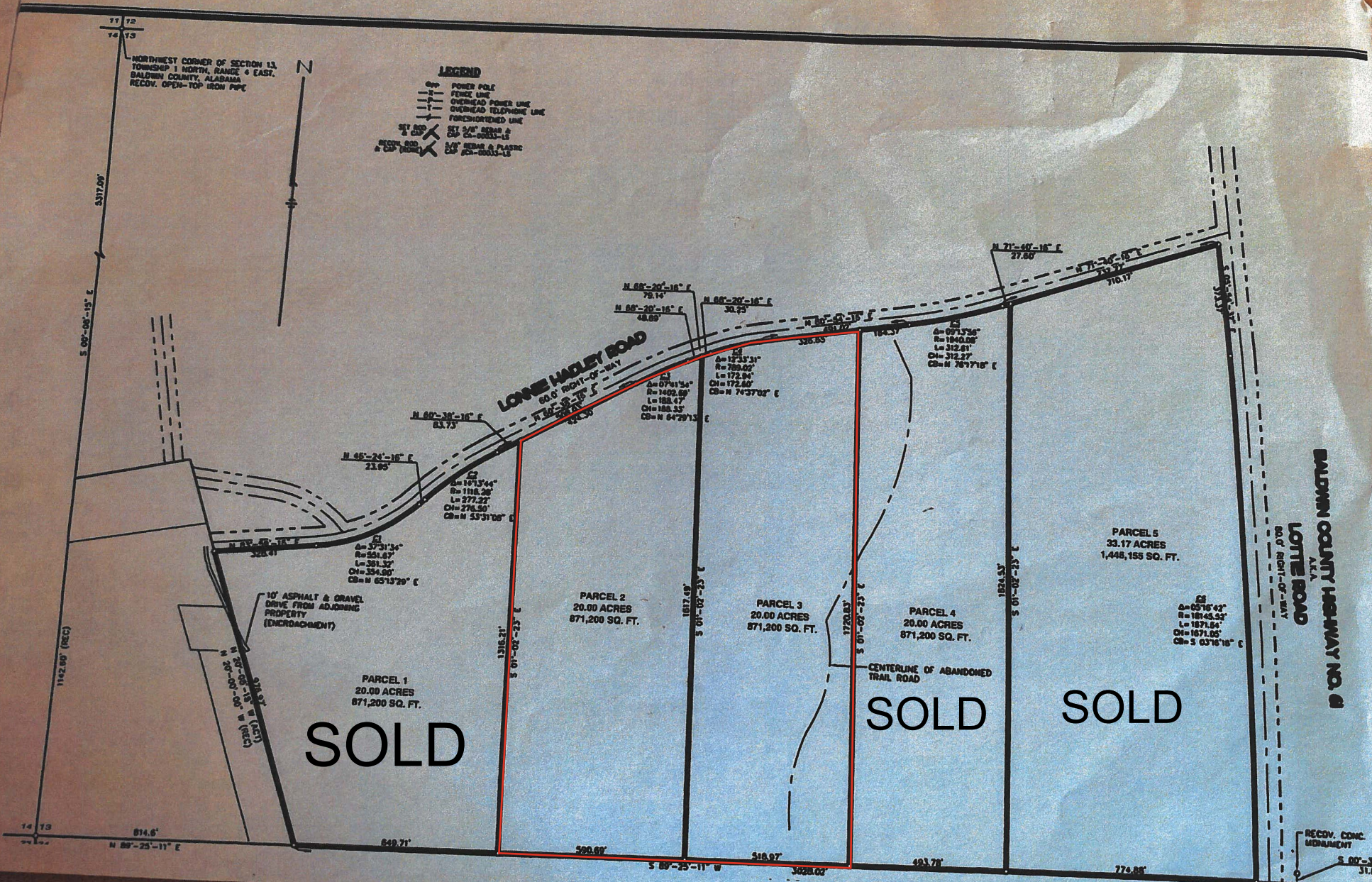


NORTHWEST CORNER OF SECTION 13,  
TOWNSHIP 1 NORTH, RANGE 4 EAST,  
BALDWIN COUNTY, ALABAMA  
RECOV. OPEN-TOP IRON PIPE



- LEGEND**
- POWER POLE
  - FENCE LINE
  - OVERHEAD POWER LINE
  - OVERHEAD TELEPHONE LINE
  - FORESHORDED LINE
  - ⊗ SET 5/8" IRON PIPE  
RECOV. 600' & CAP (NONE)
  - ⊗ SET 1/2" IRON PIPE  
& CAP (NONE)
  - ⊗ SET 3/4" IRON PIPE  
& CAP (NONE)
  - ⊗ SET 1" IRON PIPE  
& CAP (NONE)



BALDWIN COUNTY HIGHWAY NO. 6  
A.K.A.  
LOTTE ROAD  
60.0' RIGHT-OF-WAY

PARCEL 5  
33.17 ACRES  
1,448,158 SQ. FT.

**SOLD**

**SOLD**

**SOLD**

RECOV. CONC.  
MONUMENT  
S 00°-34'  
31.6'