

MARSHALL

LAND BROKERS & AUCTIONEERS
Office 308-234-6266

CUSTER COUNTY, NE

LAND FOR SALE

75.81 Acres[±]



PRODUCTIVE IRRIGATED CROPLAND

Location: From Sargent, 1.5 miles north on US Highway 183 and 1.25 miles west on Road 817.

Legal Description: That part lying south of the canal in the West Half of the Southeast Quarter of Section 28, Township 20 North, Range 18 West of the 6th P.M., Custer County, Nebraska

About the Land: 75.81 Acres, more or less, estimated and subject to survey. Excellent quality irrigated cropland with highly productive soils. The farmland has 63.8 acres of surface water rights through Sargent Irrigation District.

Farm Service Agency: Total cropland - 63.37 acres. Corn base - 62.5 acres with 170bu. PLC yield

Soil Types: Soils of the cropland - 87.7% Cozad Silt loam rated as Class 1 and 2. 12.3% Coly silt loam rated as Class 4. Soils of the pastureland include Uly and Coly-Uly silt loams

Price: \$ 440,000 (\$5,803 per acre)

10% earnest money deposit upon signing of purchase agreement. The remainder due at closing.



Luke Huddleston | Associate

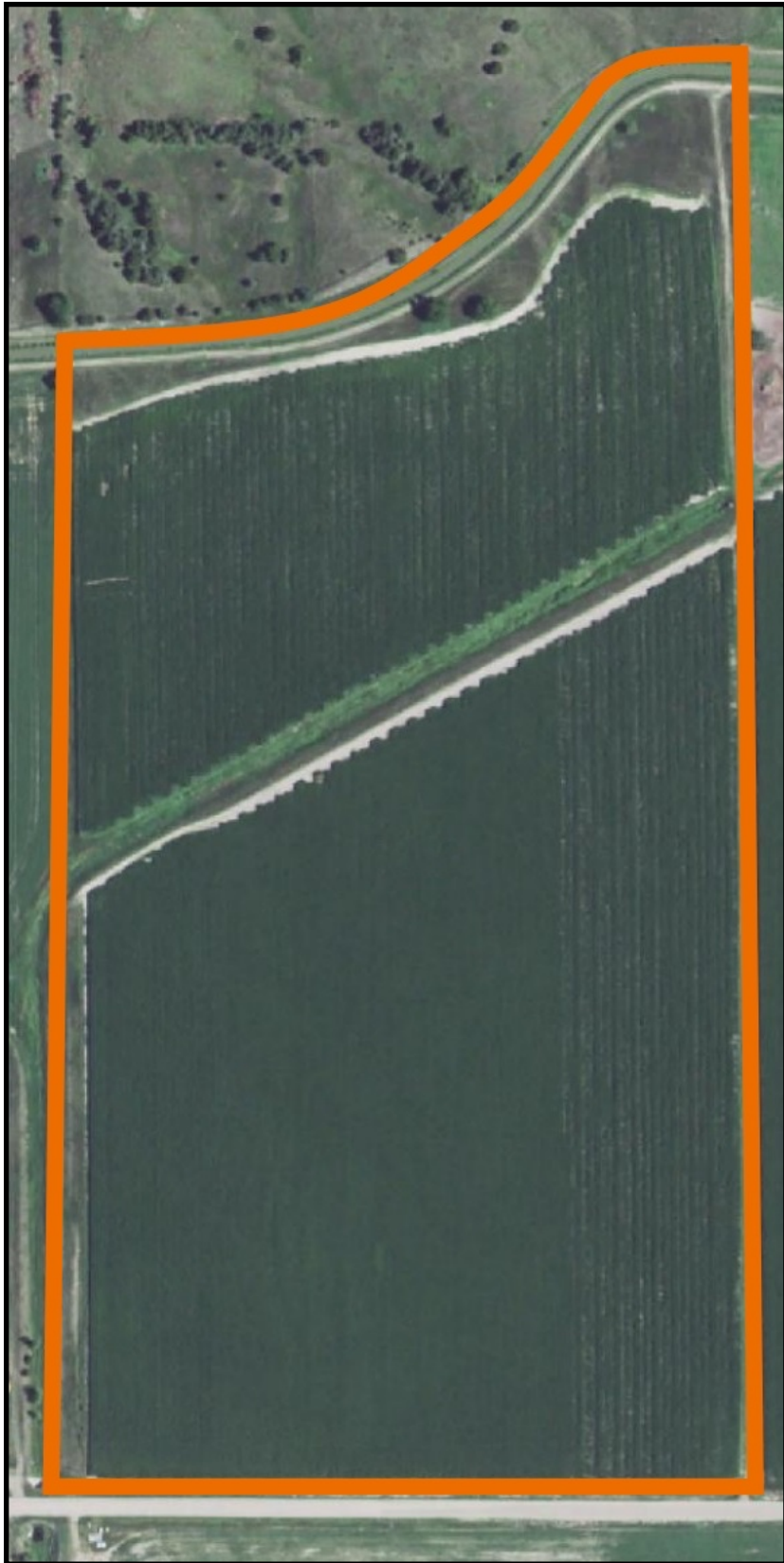
Cell 308-293-7258

Miles Marshall | Broker

Cell 308-233-4384

308.234.6266 marshallauction.com

2033 Central Ave
Kearney, Nebraska



Maps are for illustrative purposes only — not intended to represent actual property lines.

