

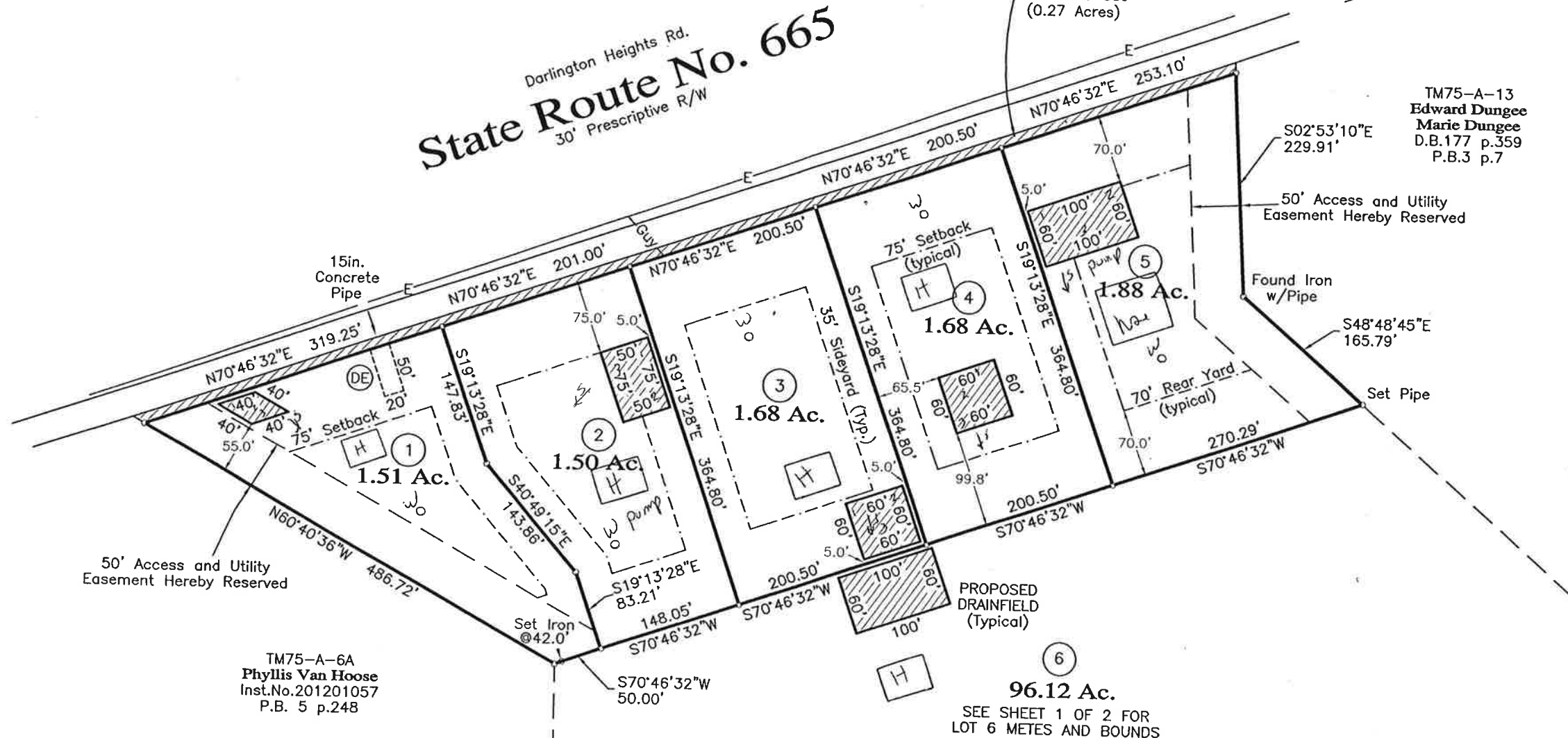
State Route No. 665

Darlington Heights Rd.
30' Prescriptive R/W

10' Strip along entire frontage hereby dedicated to VDOT for Public Use (0.27 Acres)

±1.2mi. To Rte. 666

TM75-A-13
Edward Dungee
Marie Dungee
D.B.177 p.359
P.B.3 p.7



50' Access and Utility Easement Hereby Reserved

50' Access and Utility Easement Hereby Reserved

TM75-A-6A
Phyllis Van Hoose
Inst.No.201201057
P.B. 5 p.248

PROPOSED DRAINFIELD (Typical)
SEE SHEET 1 OF 2 FOR LOT 6 METES AND BOUNDS

- Legend:**
- E—=Overhead Electric Line(s)
 - = Iron pin set at property corner unless otherwise described
 - ⊖ = 20'x50' Drainage Easement dedicated
 - ▨ = Proposed Drainfield

Sheet 2 of 2
Survey
of
Hunters Path Subdivision
Buffalo District, Prince Edward County, Virginia
January 14, 2022
Scale: 1in.=100ft.

Maxey & Associates, P.C.
Land Surveyors • Engineers • Planners • Consultants
P.O. Box 90 • Farmville • Virginia • 23901 • Tel:434-392-8827

