



FARM & RANCH

28 PICTURESQUE ACRES IN PEASTER ISD

700 Adell Circle – Weatherford, TX



LISTED BY **STEPHEN REICH GROUP** OF WILLIAMS TREW REAL ESTATE

PROPERTY SUMMARY

DESCRIPTION

A True Diamond in the Rough! Don't miss this incredible opportunity to own 28 picturesque acres in Peaster, Texas. This property comes fully fenced and cross-fenced, complete with two barns, a charming 3-bedroom, 2-bath home, and a large pond. The gently rolling terrain provides stunning eastern views, ensuring breathtaking sunrises every morning. With ample pastureland and diverse cover, it offers fantastic potential for both livestock and wildlife. Inside the home, you'll find a remodeled kitchen ready for your creative touch to complete the updates. This unique property combines serene country living with endless possibilities—seize the chance to make it your own!

LOCATION

CITY Weatherford
County Parker
Schools Peaster ISD

OFFER SUMMARY

List Price \$850,000
Lot Size 28.459 acres
Utilities Septic, Well

Driving Directions From downtown Weatherford, turn left on Fourth traveling north on Main St. Left on 1885. Right on Adell Cir. Sign on property will be on the left.

HIGHLIGHTS

2,277 SF | 3 BEDS | 2 BATHS

LARGE POND

FENCED & CROSS FENCED

STUNNING EASTERN VIEWS

TWO BARNES

GENTLE ROLLING TERRAIN

LISTING PRESENTED BY:



STEPHEN REICH
817-597-8884
stephen.reich@williamstrew.com



WilliamsTrew 
A DIVISION OF EBBY HALLIDAY REAL ESTATE, INC.

TAMMY ROKUS
817-694-8019
tammy.rokus@williamstrew.com



PROPERTY WEBSITE LINK:
stephenreichgroup.com/20674931



PROPERTY PHOTOS



STEPHEN REICH – 817.597.8884
TAMMY ROKUS – 817.694.8019



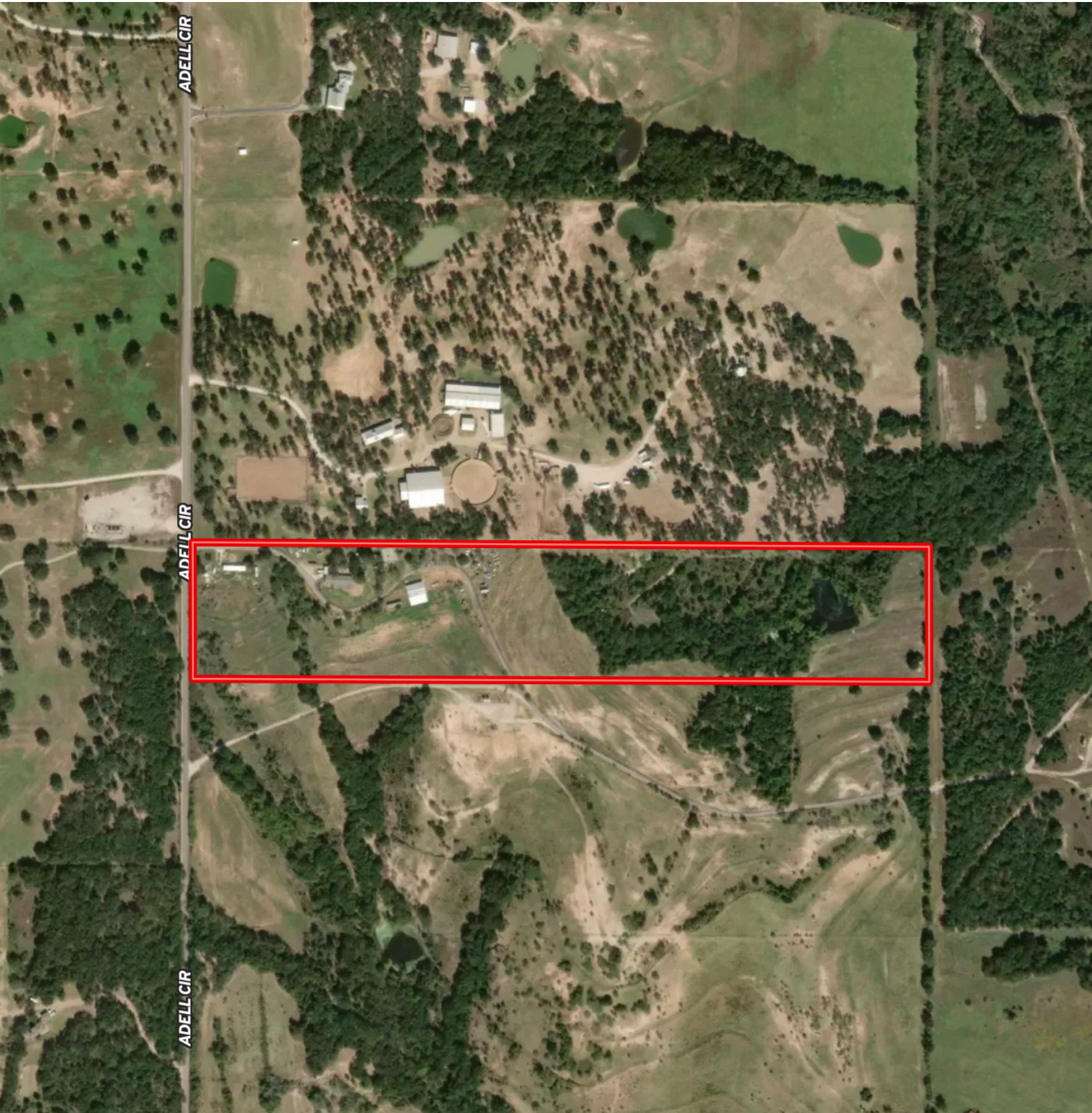
PROPERTY PHOTOS



STEPHEN REICH – 817.597.8884
TAMMY ROKUS – 817.694.8019



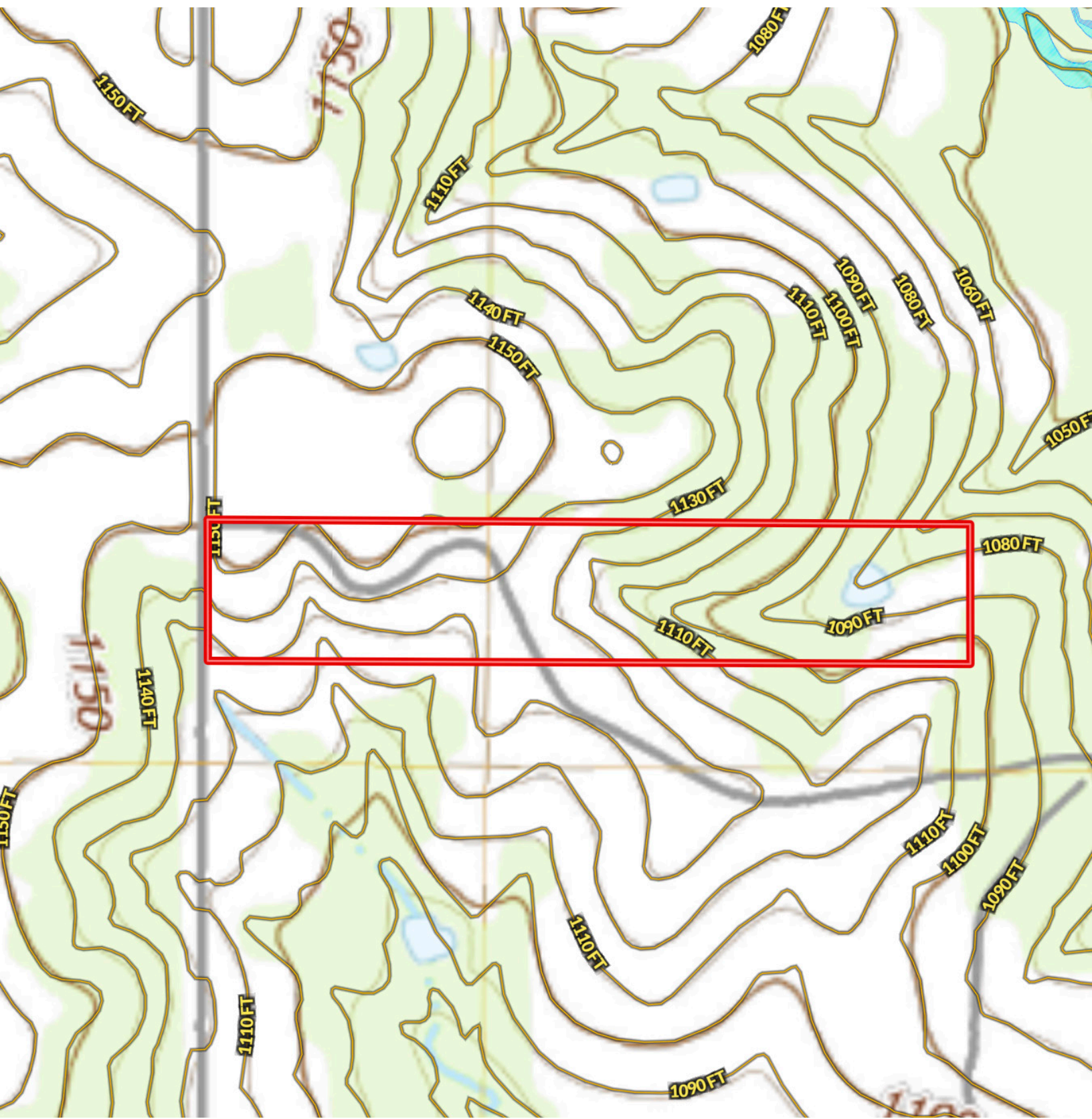
AERIAL MAP



STEPHEN REICH – 817.597.8884
TAMMY ROKUS – 817.694.8019



CONTOUR LINES & FLOODPLAIN



STEPHEN REICH – 817.597.8884
TAMMY ROKUS – 817.694.8019

