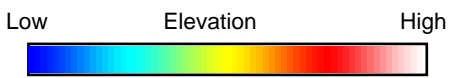
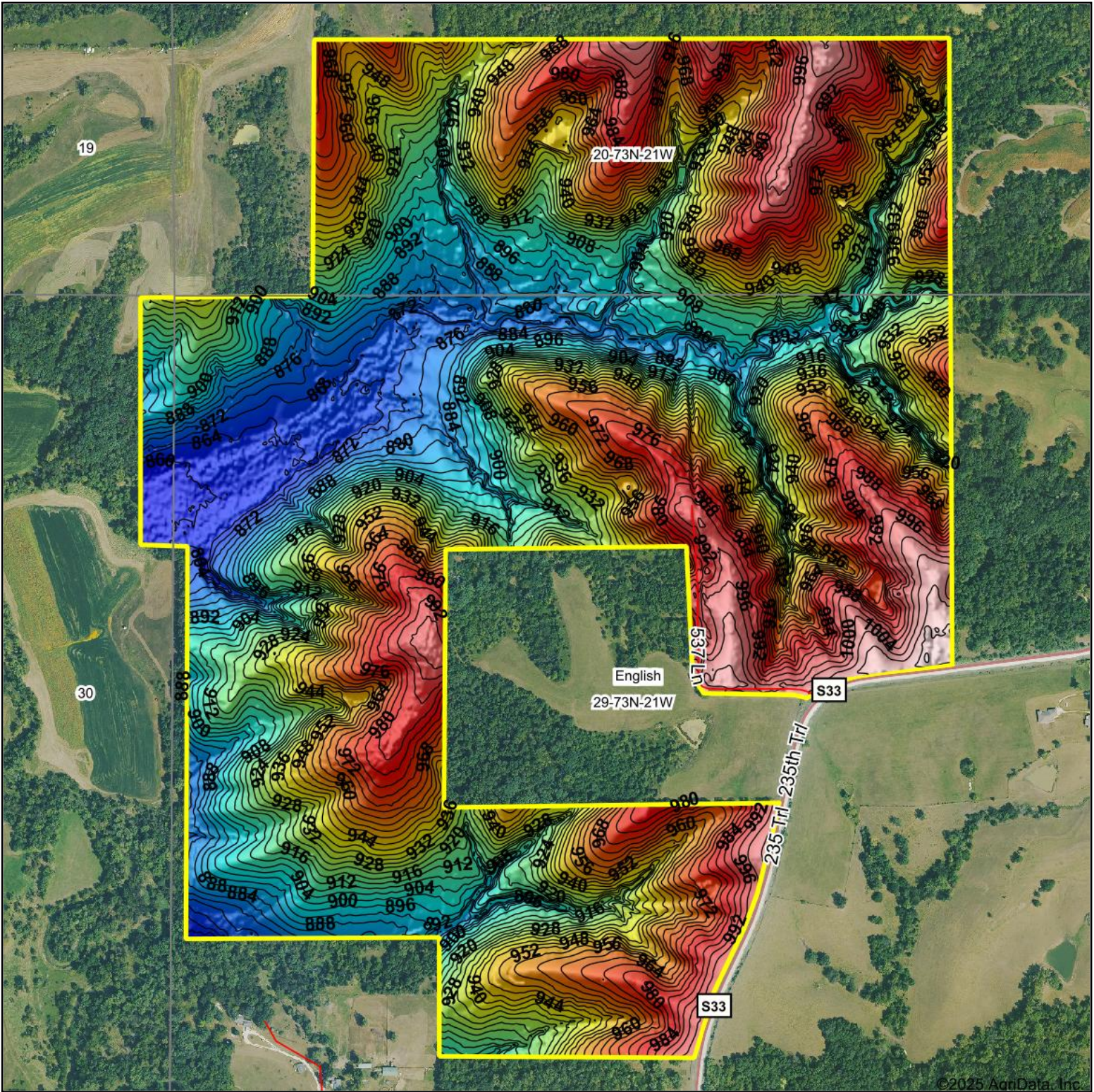


Topography Hillshade



Source: USGS 3 meter dem

Interval(ft): 4

Min: 855.7

Max: 1,018.6

Range: 162.9

Average: 934.6

Standard Deviation: 38.94 ft



1/9/2025

29-73N-21W
Lucas County
Iowa

Boundary Center: 41° 5' 56.52, -93° 18' 5.91



Maps Provided By:



© AgriData, Inc. 2023

www.AgriDataInc.com

©2025 AgriData, Inc.