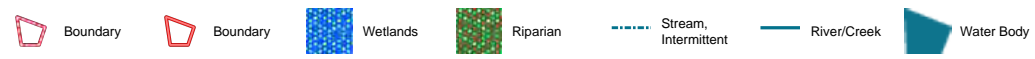
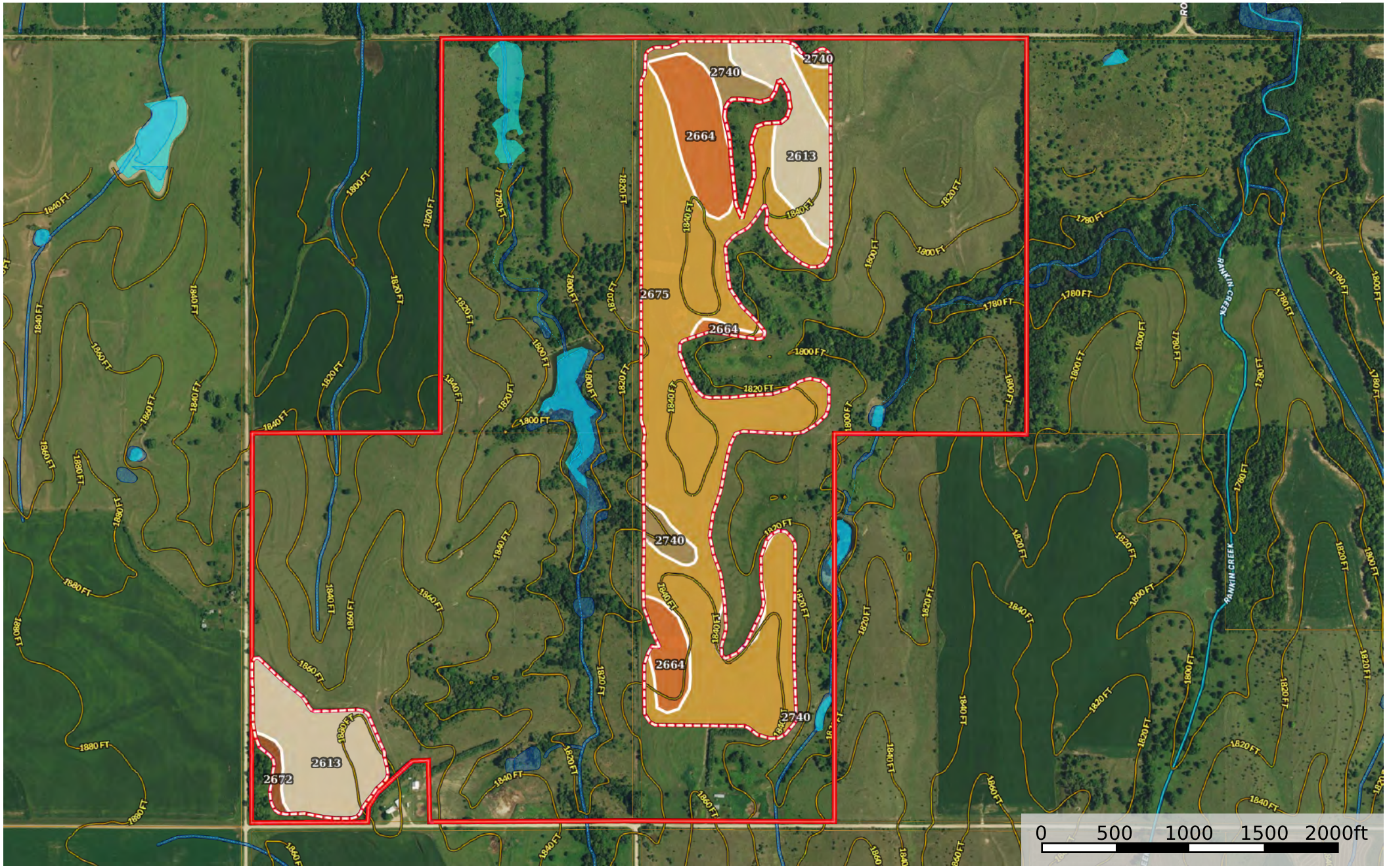


# JW - Stateline Hunting and Income (5 & 6 - 1 - 9W)

Jewell County, Kansas, 475 AC +/-





|  All Polygons 103.21 ac

SOIL CODE	SOIL DESCRIPTION	ACRES	%	CPI	NCCPI	CAP
2675	Holdrege silt loam, 3 to 7 percent slopes, plains and breaks	61.12	59.21	0	75	3e
2613	Harney silt loam, 1 to 3 percent slopes	22.65	21.94	0	69	2e
2664	Holdrege and Geary silty clay loams, 6 to 11 percent slopes, eroded	12.37	11.98	0	63	4e
2740	Nuckolls-Tobin silt loams, 0 to 30 percent slopes	6.05	5.86	0	70	6e
2672	Holdrege silty clay loam, 3 to 7 percent slopes, eroded	1.02	0.99	0	70	3e
TOTALS		103.21(*)	100%	-	71.9	3.08

(\*) Total acres may differ in the second decimal compared to the sum of each acreage soil. This is due to a round error because we only show the acres of each soil with two decimal.

|  Boundary 89.13 ac

SOIL CODE	SOIL DESCRIPTION	ACRES	%	CPI	NCCPI	CAP
2675	Holdrege silt loam, 3 to 7 percent slopes, plains and breaks	61.12	68.57	0	75	3e
2664	Holdrege and Geary silty clay loams, 6 to 11 percent slopes, eroded	12.37	13.88	0	63	4e
2613	Harney silt loam, 1 to 3 percent slopes	9.59	10.76	0	69	2e
2740	Nuckolls-Tobin silt loams, 0 to 30 percent slopes	6.05	6.79	0	70	6e
TOTALS		89.13(*)	100%	-	72.34	3.23

(\*) Total acres may differ in the second decimal compared to the sum of each acreage soil. This is due to a round error because we only show the acres of each soil with two decimal.

|  Boundary 14.08 ac

SOIL CODE	SOIL DESCRIPTION	ACRES	%	CPI	NCCPI	CAP
2613	Harney silt loam, 1 to 3 percent slopes	13.06	92.76	0	69	2e
2672	Holdrege silty clay loam, 3 to 7 percent slopes, eroded	1.02	7.24	0	70	3e
TOTALS		14.08(*)	100%	-	69.07	2.07









(\*) Total acres may differ in the second decimal compared to the sum of each acreage soil. This is due to a round error because we only show the acres of each soil with two decimal.

## Capability Legend

Increased Limitations and Hazards

Decreased Adaptability and Freedom of Choice Users

Land, Capability

								
	1	2	3	4	5	6	7	8
'Wild Life'	•	•	•	•	•	•	•	•
Forestry	•	•	•	•	•	•	•	
Limited	•	•	•	•	•	•	•	
Moderate	•	•	•	•	•	•		
Intense	•	•	•	•	•			
Limited	•	•	•	•				
Moderate	•	•	•					
Intense	•	•						
Very Intense	•							

### Grazing Cultivation

(c) climatic limitations (e) susceptibility to erosion

(s) soil limitations within the rooting zone (w) excess of water