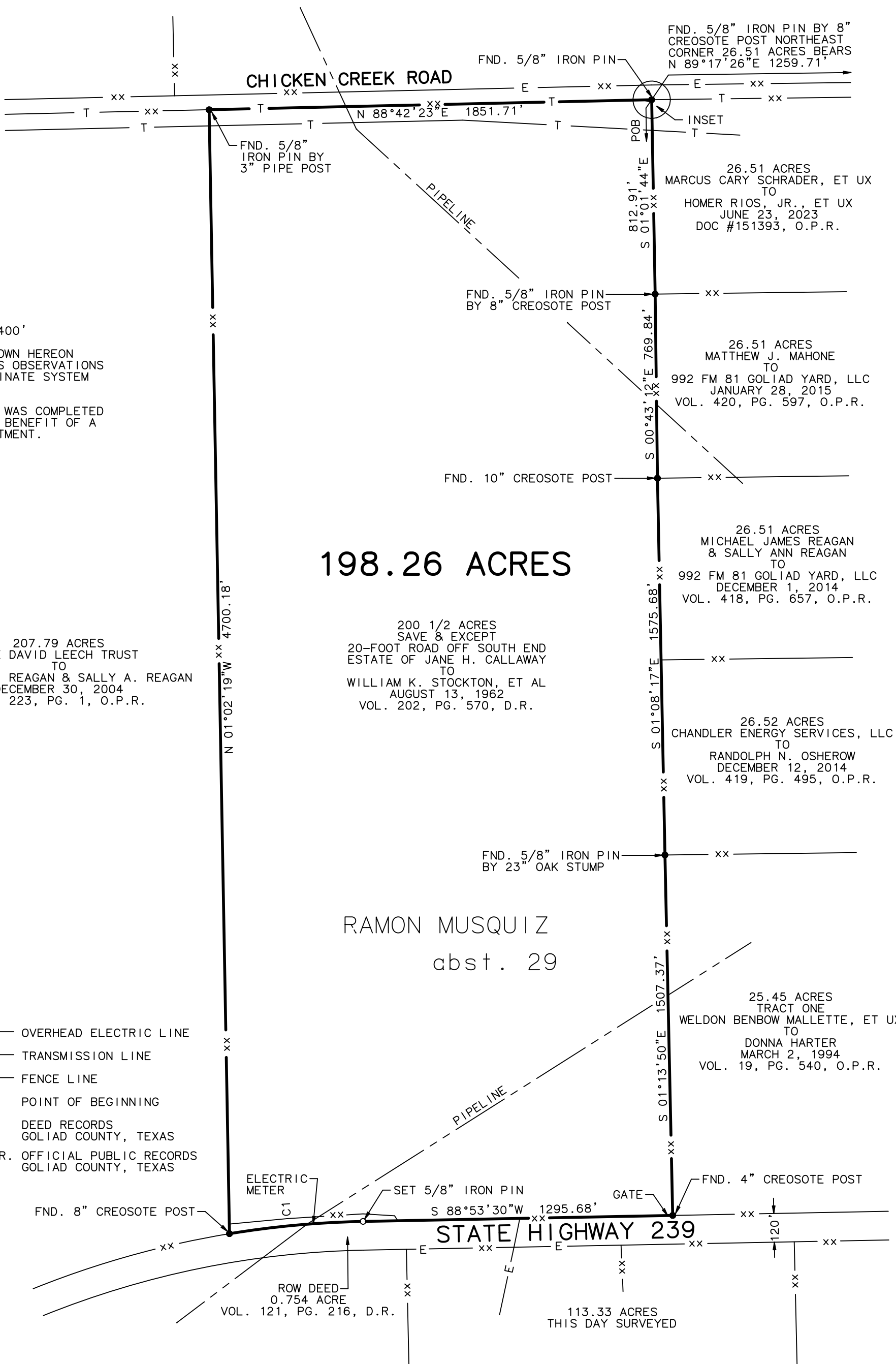


GOLIAD COUNTY, TEXAS



SCALE 1" = 400'

BEARINGS SHOWN HEREON ARE FROM GPS OBSERVATIONS TEXAS COORDINATE SYSTEM NAD (83).

THIS SURVEY WAS COMPLETED WITHOUT THE BENEFIT OF A TITLE COMMITMENT.

207.79 ACRES
THE DAVID LEECH TRUST
TO
MICHAEL J. REAGAN & SALLY A. REAGAN
DECEMBER 30, 2004
VOL. 223, PG. 1, O.P.R.

198.26 ACRES

200 1/2 ACRES
SAVE & EXCEPT
20-FOOT ROAD OFF SOUTH END
ESTATE OF JANE H. CALLAWAY
TO
WILLIAM K. STOCKTON, ET AL
AUGUST 13, 1962
VOL. 202, PG. 570, D.R.

RAMON MUSQUIZ
abst. 29

FND. 5/8" IRON PIN BY 8" CREOSOTE POST NORTHEAST CORNER 26.51 ACRES BEARS N 89°17'26"E 1259.71'

26.51 ACRES
MARCUS CARY SCHRADER, ET UX
TO
HOMER RIOS, JR., ET UX
JUNE 23, 2023
DOC #151393, O.P.R.

26.51 ACRES
MATTHEW J. MAHONE
TO
992 FM 81 GOLIAD YARD, LLC
JANUARY 28, 2015
VOL. 420, PG. 597, O.P.R.

26.51 ACRES
MICHAEL JAMES REAGAN & SALLY ANN REAGAN
TO
992 FM 81 GOLIAD YARD, LLC
DECEMBER 1, 2014
VOL. 418, PG. 657, O.P.R.

26.52 ACRES
CHANDLER ENERGY SERVICES, LLC
TO
RANDOLPH N. OSHEROW
DECEMBER 12, 2014
VOL. 419, PG. 495, O.P.R.

25.45 ACRES
TRACT ONE
WELDON BENBOW MALLETT, ET UX
TO
DONNA HARTER
MARCH 2, 1994
VOL. 19, PG. 540, O.P.R.

LEGEND:

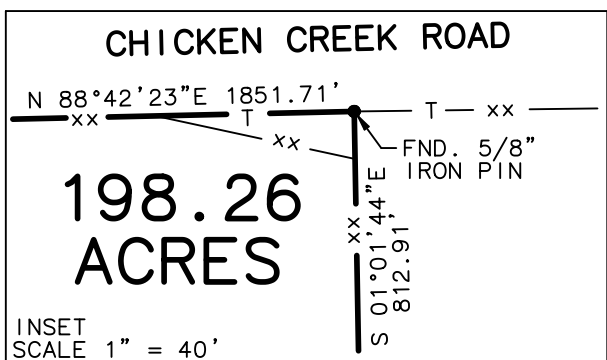
- E — OVERHEAD ELECTRIC LINE
- T — TRANSMISSION LINE
- xx — FENCE LINE
- POB POINT OF BEGINNING
- D.R. DEED RECORDS GOLIAD COUNTY, TEXAS
- O.P.R. OFFICIAL PUBLIC RECORDS GOLIAD COUNTY, TEXAS

PREPARED FOR: DENNIS STOCKTON

SURVEYED ON THE GROUND: FEBRUARY 4, 2025

CURVE	DELTA ANGLE	RADIUS	ARC	TANGENT	CHORD	CHORD BEARING
C1	08°15'31"	3894.64'	561.37'	281.17'	560.89'	S 84°45'45"W

A PLAT OF A 198.26 ACRE TRACT OF LAND SITUATED ABOUT 15.2 MILES N 69° W OF GOLIAD IN GOLIAD COUNTY, TEXAS.



I HEREBY CERTIFY THAT THE FOREGOING PLAT AND ACCOMPANYING FIELD NOTE DESCRIPTION WERE PREPARED FROM AN ACTUAL SURVEY PERFORMED ON THE GROUND, UNDER MY SUPERVISION, AND THAT THEY ARE TRUE AND CORRECT TO THE BEST OF MY KNOWLEDGE AND BELIEF. HOWARD SURVEYING ACCEPTS RESPONSIBILITY FOR THIS PLAT ONLY TO THE ORIGINAL CLIENTS FOR WHICH IT WAS PREPARED.

THIS THE 13TH DAY OF FEBRUARY 2025.

Keith Howard
KEITH HOWARD, R.P.L.S. NO. 5949
HOWARD SURVEYING
TBPELS FIRM NO. 10125700
402 STATE HWY 173 SOUTH
HONDO, TEXAS 78861
830-426-4776

