

**27± ACRES**  
**JONES COUNTY, MS**  
**\$265,000**



**SMALLTOWN**

HUNTING PROPERTIES  
& REAL ESTATE<sup>SM</sup>

OFFICE (769) 888-2522



# THE JONES 27

## PROPERTY PROFILE

### LOCATION:

- Laurel, MS 39443
- Shady Grove Community
- Jones County
- 5± Miles N of Downtown Laurel
- 32± Miles N of Hattiesburg

### COORDINATES:

- 31.74287, -89.15645

### PROPERTY USE:

- Development
- Investment
- Home Sites

### PROPERTY INFORMATION:

- 27± Acres
- Access by 2 Deeded Easements
- Pasture Ground
- Multiple Home Sites
- North Jones Elementary School
- West Jones High School

### TAX INFORMATION:

2023 - \$116.72

- Parcel 147E-13-00-001.01



**SMALLTOWN**  
HUNTING PROPERTIES  
& REAL ESTATE<sup>SM</sup>

**DEWAYNE ATKINSON**

LAND SPECIALIST

C: 601-832-3075

O: 769-888-2522

[dewayne@smalltownproperties.com](mailto:dewayne@smalltownproperties.com)

4848 Main St. - Flora, MS 39071

[smalltownproperties.com](http://smalltownproperties.com)

Information is believed to be accurate but not guaranteed.



# WELCOME TO THE JONES 27

INTRODUCING THE JONES 27, A PEACEFUL PIECE OF LAND MADE UP OF RICH PASTURE, IDEAL FOR DEVELOPMENT! Nestled in Jones County, MS, this 27± acre property offers a lovely setting with a creek meandering through, creating a scenic and charming backdrop. Multiple homesites are available, so grab your blueprints and start building. Conveniently situated within the West Jones High School District, the property is only 10 minutes away from all the amenities of Laurel, including shopping, entertainment, and groceries. The property is accessed from two different deeded easements, and utilities are available. This unique piece of land presents a perfect blend of natural beauty and convenience.

**Contact Dewayne Atkinson today to explore the options on the Jones 27.**



**SMALLTOWN**  
HUNTING PROPERTIES  
& REAL ESTATE<sup>SM</sup>

**DEWAYNE ATKINSON**

LAND SPECIALIST

C: 601-832-3075

O: 769-888-2522

[dewayne@smalltownproperties.com](mailto:dewayne@smalltownproperties.com)

4848 Main St. - Flora, MS 39071

[smalltownproperties.com](http://smalltownproperties.com)

Information is believed to be accurate but not guaranteed.



27 ± ACRES

JONES COUNTY, MISSISSIPPI



**SMALLTOWN**  
HUNTING PROPERTIES  
& REAL ESTATE<sup>SM</sup>

**DEWAYNE ATKINSON**

LAND SPECIALIST

C: 601-832-3075

O: 769-888-2522

[dewayne@smalltownproperties.com](mailto:dewayne@smalltownproperties.com)

4848 Main St. - Flora, MS 39071

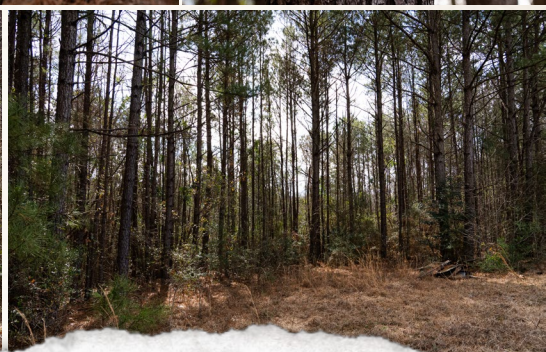
[smalltownproperties.com](http://smalltownproperties.com)

Information is believed to be accurate but not guaranteed.



27 ± ACRES

JONES COUNTY, MISSISSIPPI



**SMALLTOWN**  
HUNTING PROPERTIES  
& REAL ESTATE<sup>SM</sup>

**DEWAYNE ATKINSON**

LAND SPECIALIST

C: 601-832-3075

O: 769-888-2522

[dewayne@smalltownproperties.com](mailto:dewayne@smalltownproperties.com)

4848 Main St. - Flora, MS 39071

[smalltownproperties.com](http://smalltownproperties.com)

Information is believed to be accurate but not guaranteed.



27 ± ACRES

JONES COUNTY, MISSISSIPPI



land id. **LINK**



Directions From Laurel, MS: Travel 0.3 miles on W 5th Street to N 7th Ave. Travel 4.1 miles on N 7th Ave and continue on Audubon Drive. Turn left on Shady Lane Road and then turn left on Reeves Road. In 0.3 miles, you will arrive at the destination. Gate to deeded easement on Reeves Road will be on the left.

**LINK TO GOOGLE MAP DIRECTIONS**



**SMALLTOWN**  
HUNTING PROPERTIES  
& REAL ESTATE<sup>SM</sup>

**DEWAYNE ATKINSON**

LAND SPECIALIST

C: 601-832-3075

O: 769-888-2522

dewayne@smalltownproperties.com

4848 Main St. - Flora, MS 39071

smalltownproperties.com

Information is believed to be accurate but not guaranteed.