

THE PINE ROCK FARM

189[±] ACRES, OGLE COUNTY, ILLINOIS



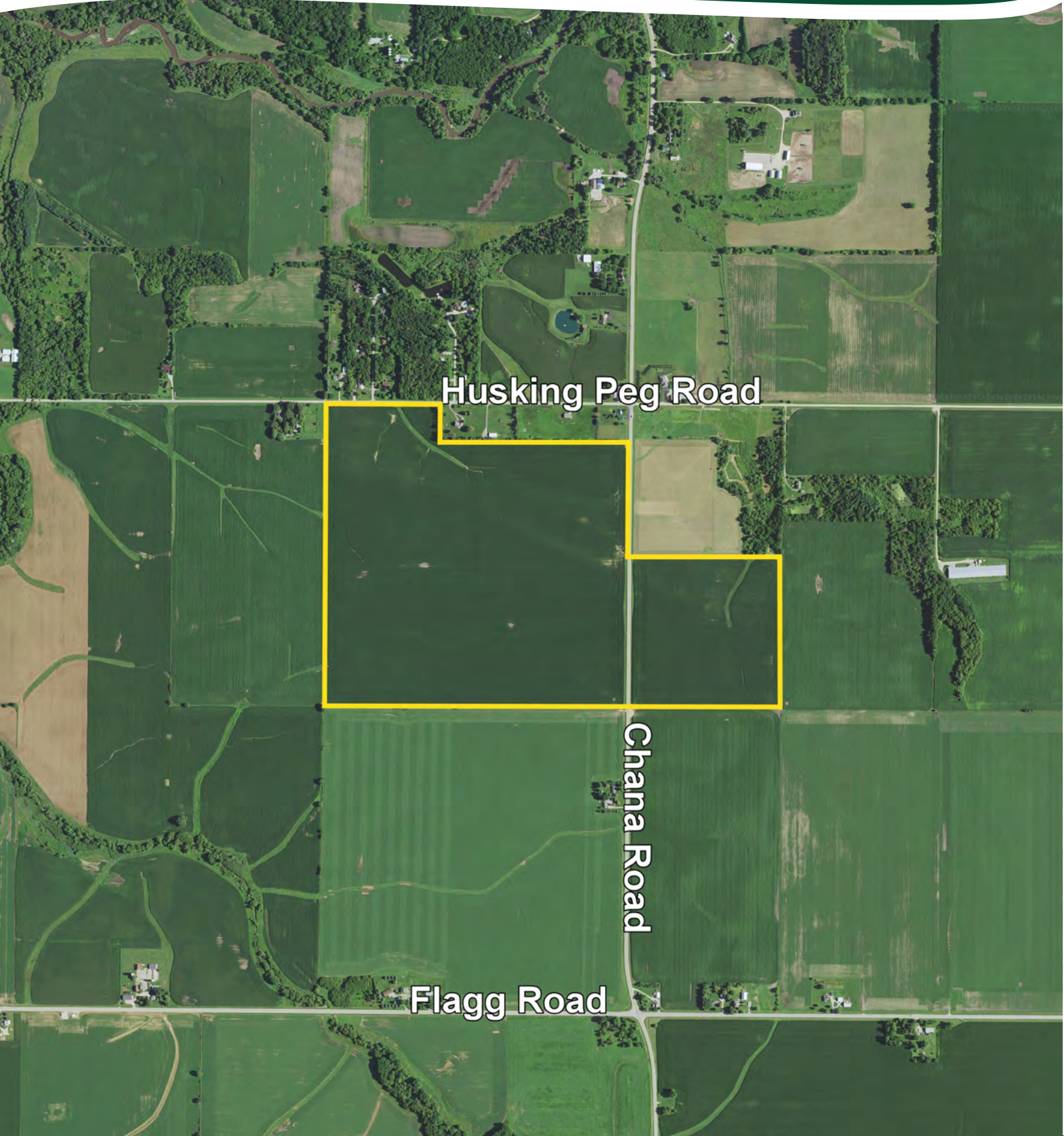
MARTIN, GOODRICH & WADDELL, INC.
REAL ESTATE SERVICES

MGW.us.com
info@mgw.us.com
(815) 756-3606

Real Estate • Farm Management • Appraisals • Consulting

THE PINE ROCK FARM

AERIAL MAP



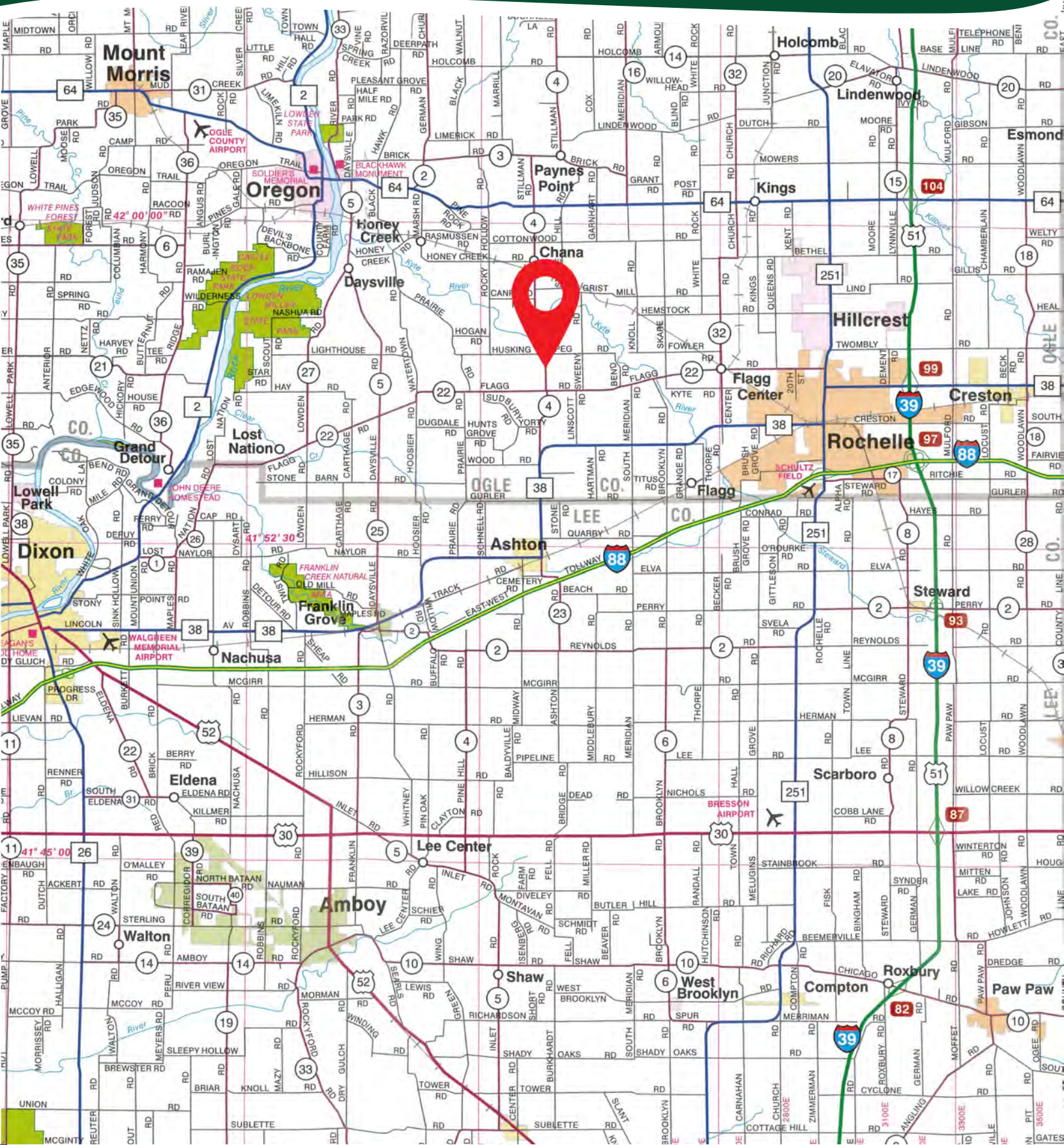
Husking Peg Road

Chana Road

Flagg Road

THE PINE ROCK FARM

HIGHWAY MAP



THE PINE ROCK FARM

PROPERTY DETAILS

LOCATION	The subject farm is located approximately 66 miles west of Chicago O'Hare International Airport. Nearby cities include: Rochelle (5 1/4 miles east), Oregon (6 1/4 miles northwest), and Dixon (13 1/2 miles southwest).
FRONTAGE	There is approximately 7/16 mile of road frontage on Chana Road and 3/16 mile on Husking Peg Road.
MAJOR HIGHWAYS	Illinois Route 38 is 2 miles south, Illinois Route 64 is 4 miles north, Illinois Route 251 is 7 5/16 miles east, and Interstate 39/U.S. Route 51 is 9 1/2 miles east of the property.
LEGAL DESCRIPTION	A brief legal description indicates The Pine Rock Farm is located in Part of the North Half of Section 34, Township 23 North – Range 11 East (Pine Rock Township), Ogle County, Illinois.
TOTAL ACRES	There are a total of 188.506 acres according to a survey.
TILLABLE ACRES	There are approximately 184.22 tillable acres according to the Ogle County FSA.
SOIL TYPES	Major soil types found on this farm include Elburn silt loam, Plano silt loam, and Drummer silty clay loam.
TOPOGRAPHY	The topography of the subject farm is level to gently rolling.
MINERAL RIGHTS	All mineral rights owned by the seller will be transferred in their entirety to the new owner.
POSSESSION	Possession will be given at closing, subject to the terms and conditions set forth in a purchase contract.
PRICE & TERMS	The asking price is \$12,950 per acre. A 10% earnest money deposit should accompany any offer to purchase.
FINANCING	Mortgage financing is available from several sources. Names and addresses will be provided upon request.
GRAIN MARKETS	There are a number of grain markets located within 15 miles of The Pine Rock Farm.

THE PINE ROCK FARM

PROPERTY DETAILS

TAXES	The 2023 real estate taxes totaled \$9,856.34. The tax parcel numbers are #17-34-100-007 & #17-34-200-007.
ZONING	The property is zoned AG-1, Agricultural.
COMMENTS	The information in this brochure is considered accurate, but not guaranteed. For inquiries, inspection appointments, and offers, please contact Josh Waddell at Martin, Goodrich & Waddell, Inc. at 815-751-0439.

THE PINE ROCK FARM

PROPERTY PHOTOS



THE PINE ROCK FARM

PROPERTY PHOTOS



THE PINE ROCK FARM

SOILS INFORMATION

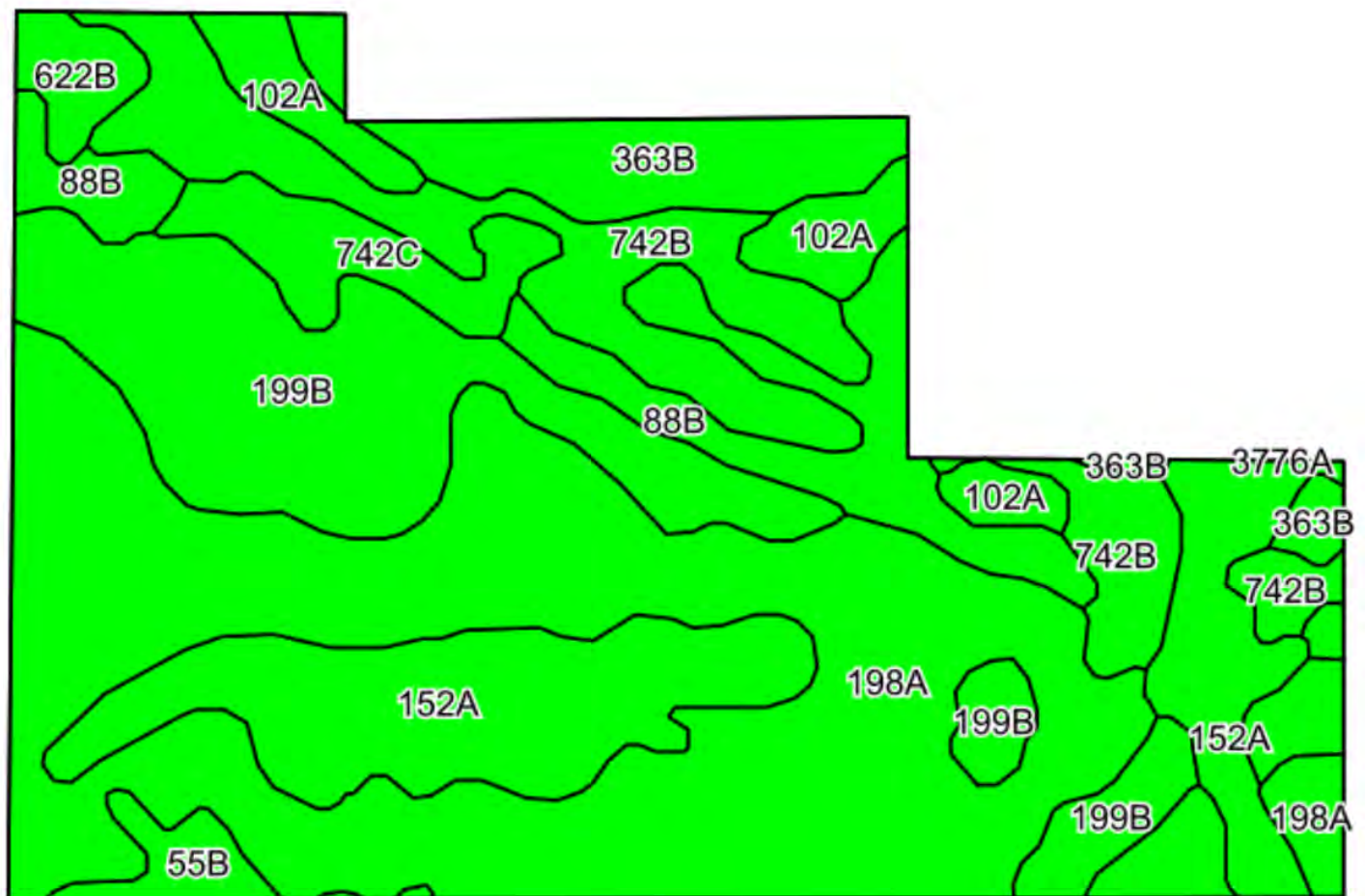
SOILS DESCRIPTIONS & PRODUCTIVITY DATA*

SOIL #	SOIL NAME	APPROX. ACRES	PRODUCTIVITY INDEX (PI)*
198A	Elburn silt loam	70.08	143
199B	Plano silt loam	29.60	141
152A	Drummer silty clay loam	25.27	144
742B	Dickinson sandy loam	20.55	102
88B	Sparta loamy sand	11.67	89
363B	Griswold loam	10.17	116
742C	Dickinson sandy loam	5.86	100
102A	La Hogue loam	5.75	121
55B	Sidell silt loam	2.86	131
622B	Wyanet silt loam	2.41	119
WEIGHTED AVERAGE:			130.8

*Figures taken from the University of Illinois Bulletin 811, Optimum Crop Productivity Ratings for Illinois Soils.

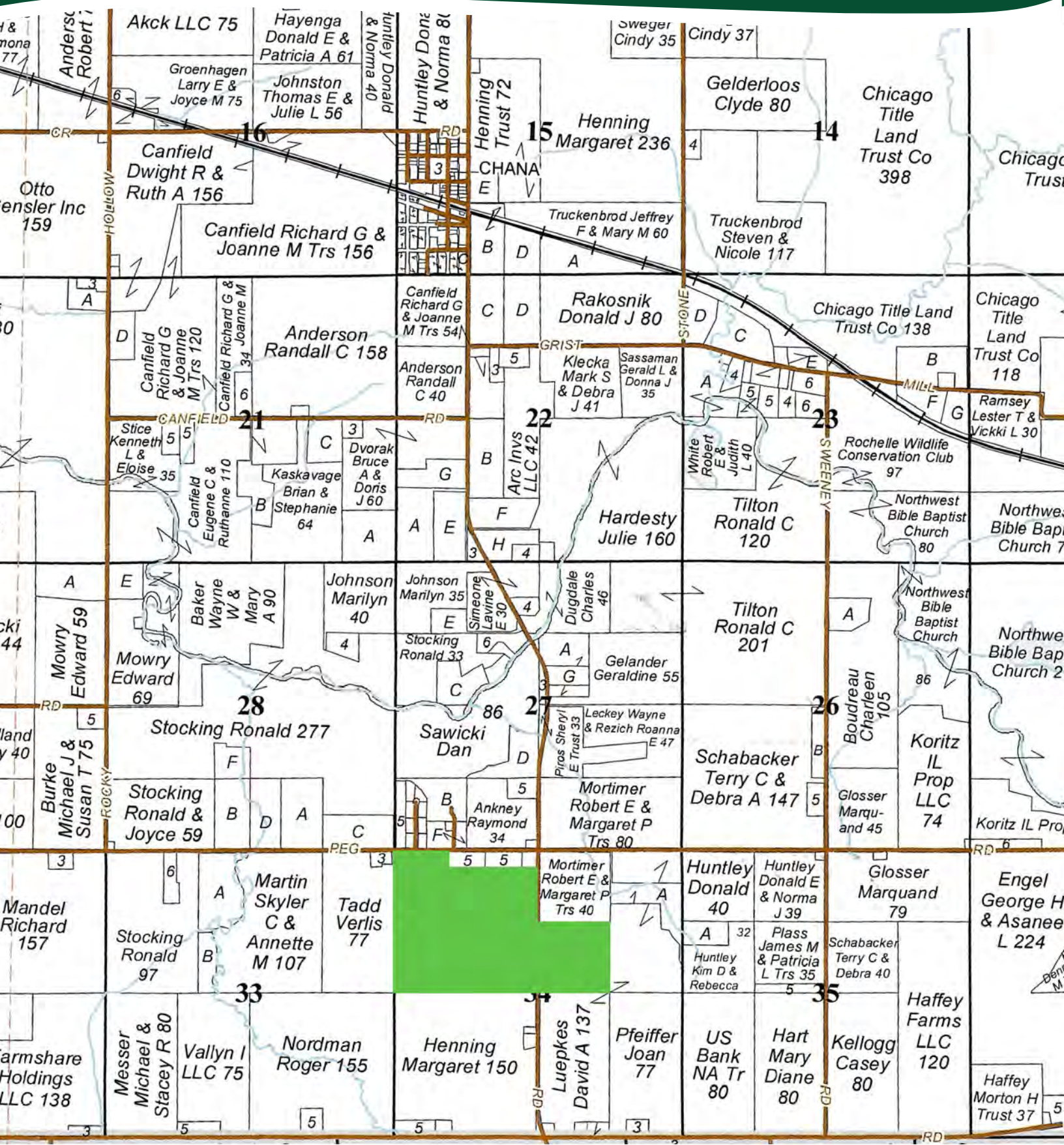
THE PINE ROCK FARM

SOILS MAP



THE PINE ROCK FARM

PLAT MAP



THE PINE ROCK FARM

APPENDIX

THE FOLLOWING PAGES CONTAIN THESE DOCUMENTS:

1. FSA AERIAL MAP
2. FSA-156EZ
3. TOPOGRAPHY MAP
4. PIPELINE MAP

For more information, please visit MGW.us.com

or contact:

Josh Waddell (815) 751-0439 | Josh.Waddell@mgw.us.com



MARTIN, GOODRICH & WADDELL, INC.
REAL ESTATE SERVICES



United States
Department of
Agriculture

Ogle County, Illinois



Legend	
	Tract Boundary
	Non-Cropland
	Cropland
	CRP

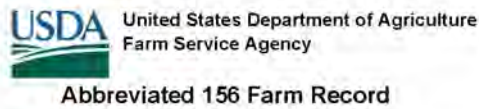
Wetland Determination Identifiers	
	Restricted Use
	Limited Restrictions
	Exempt from Conservation
	Compliance Provisions

2024 Program Year
Map Created March 14, 2024
Farm 10044
Tract 7866

Tract Cropland Total: 184.78 acres

United States Department of Agriculture (USDA) Farm Service Agency (FSA) maps are for FSA Program administration only. This map does not represent a legal survey or reflect actual ownership, rather it depicts the information provided directly from the producer and/or National Agricultural Imagery Program (NAIP) Imagery. The producer accepts the data 'as is' and assumes all risks associated with its use. USDA-FSA assumes no responsibility for actual or consequential damage incurred as a result of any user's reliance on this data outside FSA Programs. Wetland Identifiers do not represent the size, shape, or specific determination of the area. Refer to your original determination (CPA-026 and attached maps) for exact boundaries and determinations or contact USDA Natural Resources Conservation Service (NRCS).

ILLINOIS
 OGLE
 Form: FSA-156EZ



FARM : 10044
 Prepared : 2/4/25 3:26 PM CST
 Crop Year : 2025

NOTES

Tract Number : 7866

Description : PNR 34

FSA Physical Location : ILLINOIS/OGLE

ANSI Physical Location : ILLINOIS/OGLE

BIA Unit Range Number :

HEL Status : NHEL: No agricultural commodity planted on undetermined fields

Wetland Status : Tract does not contain a wetland

WL Violations : None

Owners :

Other Producers :

Recon ID : 17-141-2010-46

Tract Land Data

Farm Land	Cropland	DCP Cropland	WBP	EWP	WRP	GRP	Sugarcane
185.39	184.78	184.78	0.00	0.00	0.00	0.00	0.0
State Conservation	Other Conservation	Effective DCP Cropland	Double Cropped	CRP	MPL	DCP Ag. Rel Activity	SOD
0.00	0.00	184.78	0.00	0.00	0.00	0.00	0.00

DCP Crop Data

Crop Name	Base Acres	CCC-505 CRP Reduction Acres	PLC Yield
Corn	183.30	0.00	188
TOTAL	183.30	0.00	

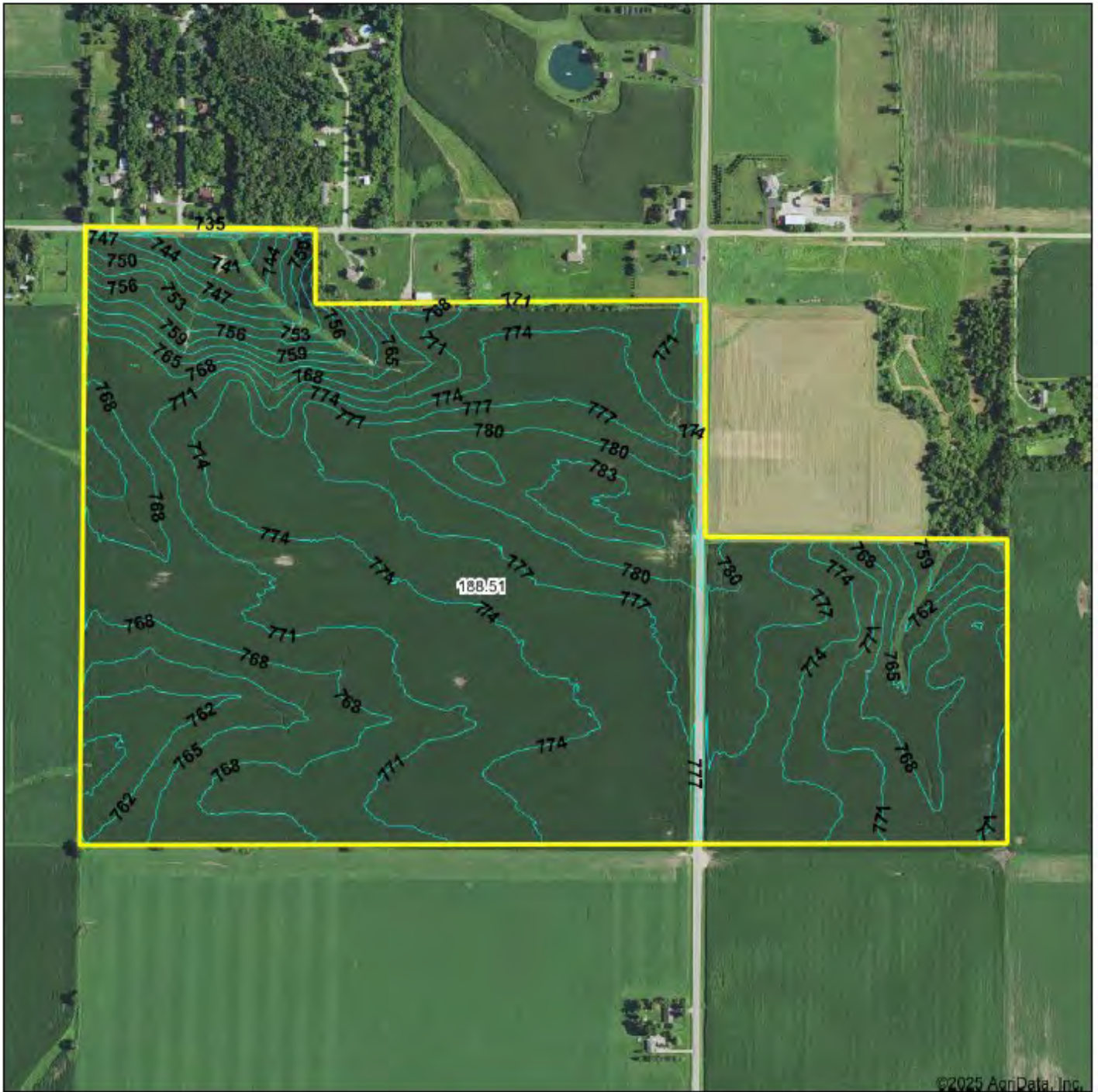
NOTES

In accordance with Federal civil rights law and U.S. Department of Agriculture (USDA) civil rights regulations and policies, the USDA, its Agencies, offices, and employees, and institutions participating in or administering USDA programs are prohibited from discriminating based on race, color, national origin, religion, sex, gender identity (including gender expression), sexual orientation, disability, age, marital status, family/parental status, income derived from a public assistance program, political beliefs, or reprisal or retaliation for prior civil rights activity, in any program or activity conducted or funded by USDA (not all bases apply to all programs). Remedies and complaint filing deadlines vary by program or incident.

Persons with disabilities who require alternative means of communication for program information (e.g. Braille, large print, audiotape, American Sign Language, etc.) should contact the responsible Agency or USDA's TARGET Center at (202) 720-2600 (voice and TTY) or contact USDA through the Federal Relay Service at (800) 877-8339. Additionally, program information may be made available in languages other than English.

To file a program discrimination complaint, complete the USDA Program Discrimination Complaint Form, AD-3027, found online at http://www.ascr.usda.gov/complaint_filing_cust.html and at any USDA office or write a letter addressed to USDA and provide in the letter all of the information requested in the form. To request a copy of the complaint form, call (866) 632-9992. Submit your completed form or letter to USDA by: (1) mail: U.S. Department of Agriculture Office of the Assistant Secretary for Civil Rights 1400 Independence Avenue, SW Washington, D.C. 20250-9410; (2) fax: (202) 690-7442; or (3) e-mail: program.intake@usda.gov USDA is an equal opportunity provider, employer, and lender.

TOPOGRAPHY MAP

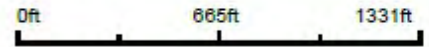


©2025 AgriData, Inc.



Map Provided By
 **surety**[®]
CUSTOMIZED ONLINE MAPPING
© AgriData, Inc. 2023 www.Agridatainc.com

Source: USGS 3 meter dem
Interval(ft): 3.0
Min: 738.1
Max: 783.9
Range: 47.8
Average: 770.9
Standard Deviation: 7.55 ft



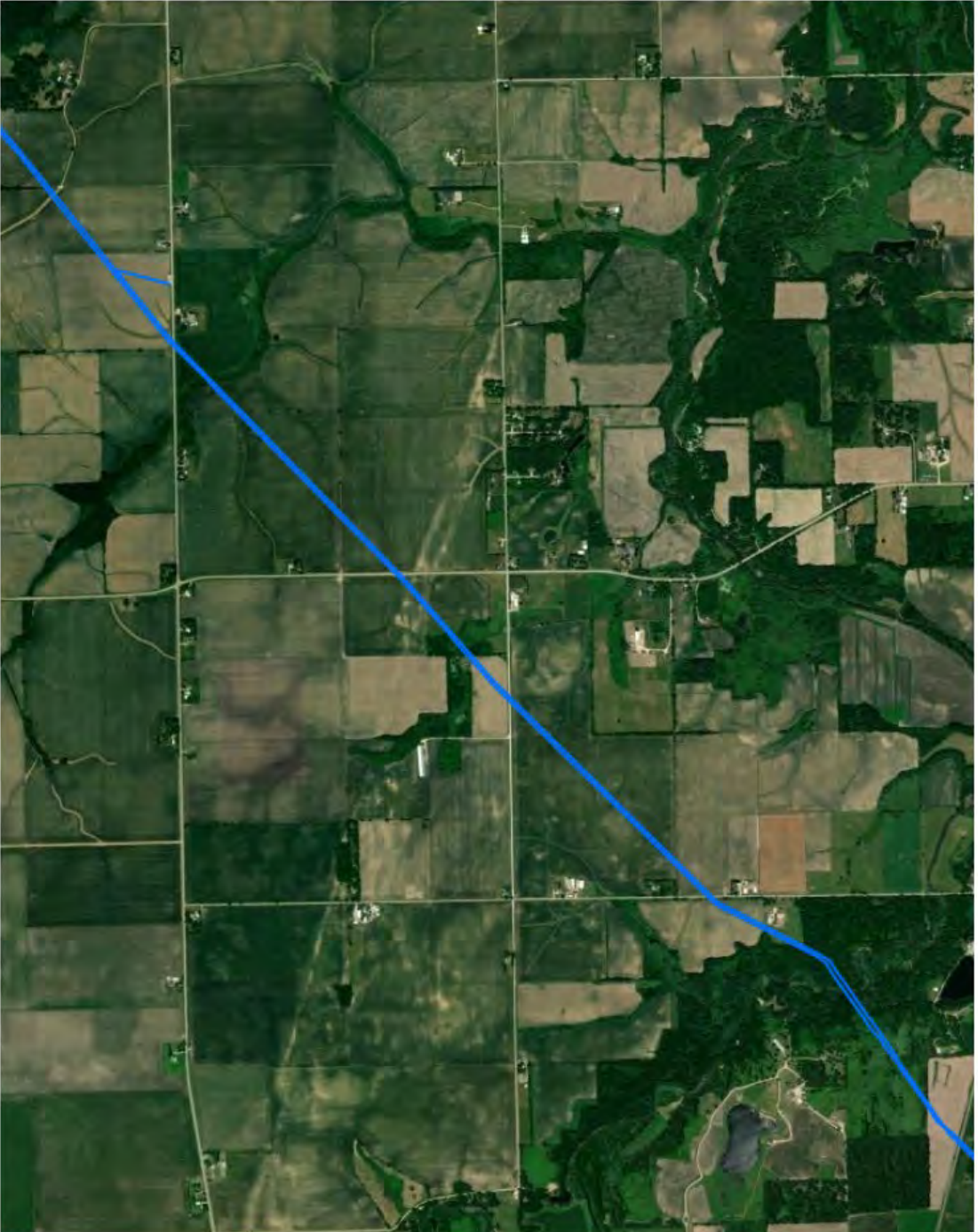
2/4/2025

34-23N-11E
Ogle County
Illinois

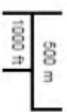
Boundary Center: 41.942833, -89.218975

PIPELINE MAP

NATIONAL PIPELINE MAPPING SYSTEM



- Legend**
- Gas Transmission Pipelines
 - Hazardous Liquid Pipelines
 - LNG Plants
 - Breakout Tanks



Pipelines depicted on this map represent gas transmission and hazardous liquid lines only. Gas gathering and gas distribution systems are not represented.

This map should never be used as a substitute for contacting a one-call center prior to excavation activities. Please call 811 before any digging occurs.

Questions regarding this map or its contents can be directed to npsms@dot.gov.

Projection: Geographic

Datum: NAD83

Map produced by the Public Viewer application at www.npsms.phmsa.dot.gov

World Imagery map service data is attributed to Esri, Maxar, Earthstar Geographics, and the GIS User Community.

Date Printed: Feb 04, 2025





MARTIN, GOODRICH & WADDELL, INC.
REAL ESTATE SERVICES

Real Estate

Farm Management

Appraisals

Consulting



MGW.us.com

Josh Waddell

Sycamore, IL 815-756-3606 • DeWitt, IA 563-659-6565

info@mgw.us.com